

Caudal

Mus 92-20

+  
Tonadilla à Solo

La Maya del Día

92-20

//  
J.<sup>va</sup> Silveria



*All.<sup>o</sup>*

*Jaes*

*tiempo Jaes tiempo Monos mios salga de broma*

*Venga y venga a di ber ti'ros solita sola*

*que des barroes el ruis silveria calla*



me dirá todo el mundo pue nada na da

oy yo me de sa ta do ya no e cu ho pa

la bra oy vengo yo de broma si de broma de bullay

zam bra es tra ña

reñ el chí re pa re zera arro gancia pue no es esto mío



chus cos no en dos pa la bras -

*Allegro*

Como soy Novicia en esta es cue la todos me

mandan gru ñen y en que:: (ta) Uno me dice de sen



to no de sen to no o tro me di ze que soi' seria

qe soi' seria yo me qui to de Cuentos no quiero

pelmas ya ba da de Ma

es tros y de fa chen das

oy Pa tie ri to mi o



pues to que el ser me as da do a ti quiero por Mae-

bro tu voto so lo a guar do segun mi cor to  
mi na tu ral no es

Juicio mi cor to Juicio dos Yumbos tiene el theatro  
serio no no es serio me gusta mas lo mafo

Uno se llama el fe-rio o ro el chairo  
y el tiempo nos con bi da para lo chairo

oy quiero daros  
pº ya i mo ni tos



muestra del uno y o no puer al caso prin ci pio  
 mios dueños a mados Con las se

por lo serio y luego yra lo chairo luego lo  
 qui di llitas de pro cura re agra daros si si agra

chairo —  
 da vos —

no  
 Desp.º Como la Na - ve ci lla

su puerto buca — su puerto  
 je



bus - - ca quando se halla y rrita - da la blanca e puma la

blanca e puma -

*Preto*

todo el ~~tiempo~~ <sup>la figas</sup> todo zon

zo bras ~~todo son sus ros~~ <sup>todo son sus ros</sup> todo con go - jas

Las taen con trare el puerto nunca ve - po sa lo mi mo le

*Desp.*

suzede ami Persona) ya vien mi Puerto o Patio ~~pongo~~ la -



proa pongo pongo la Proa — pongo

All.<sup>o</sup>  $\frac{2}{4}$   $\frac{2}{4}$  I puer con lo reris aora yo aca

bé — con lo chusco y chairo si Vematare yel Yumbo

que os agrade a quel seguir e a

quel seguir e;



*Segui Allegro*  $\text{H}^{\text{o}}$

Una Mayota, una una Mayota

una - ya se b e (pue) mi se me vi se mi a quel (ya) de Tumbo y

broma de Tumbo y

broma abla ba de su ma - jo en esta forma -



va len mai de mi Curro los cli so ~~ro~~ ros q<sup>e</sup> el turco de las

En dias y sus es ta dos; <sup>(sienta la sal y Canela de todo el barrio)</sup> que ~~el solo es gar~~ <sup>se pinta</sup>

~~so~~ lo que el el gar bo so — y le quie-re su

chaira ~~al sa le ro so~~ so al sa le ro so — al sa le

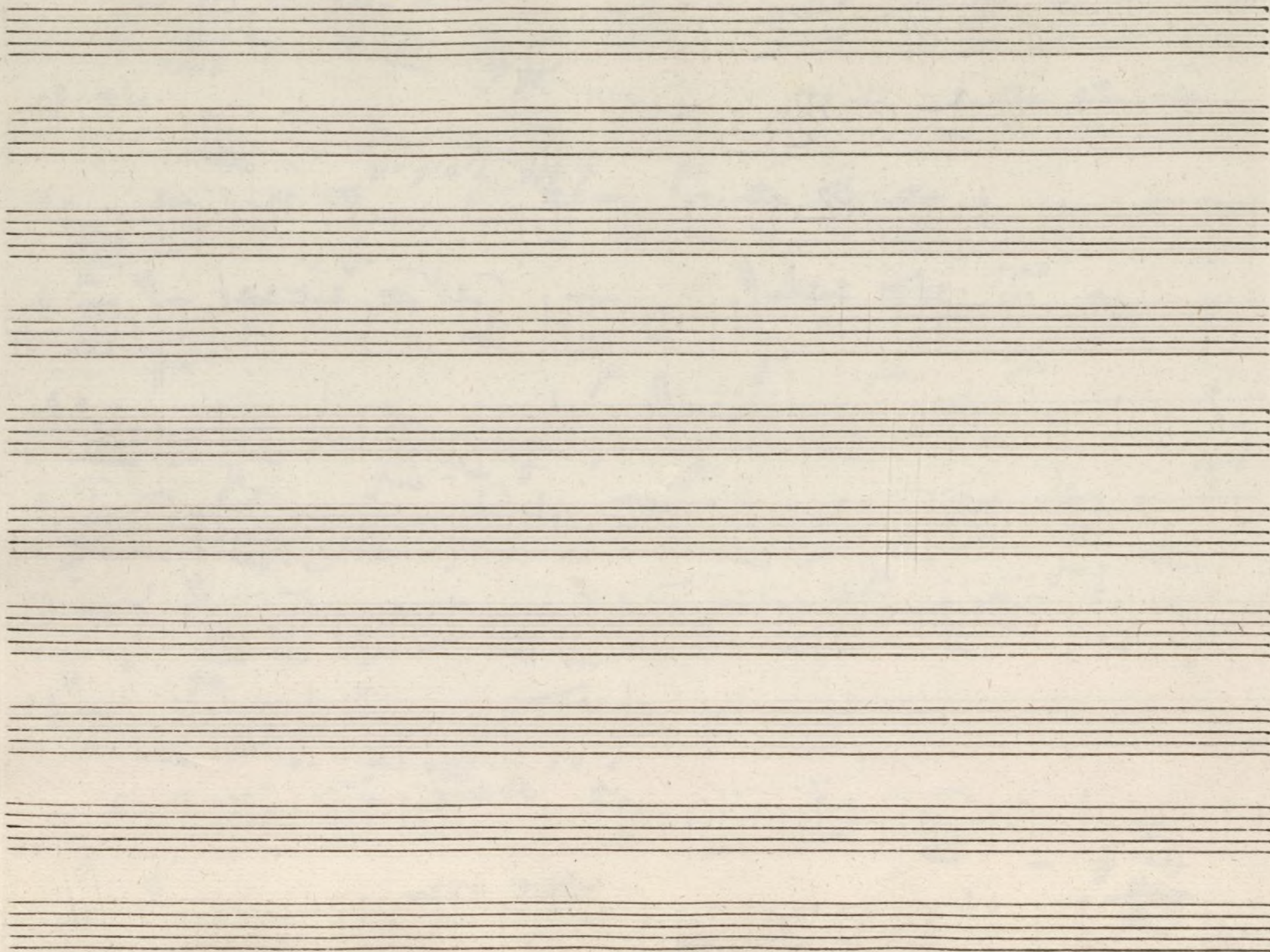
ro so — Prendas amadas  
dadme dos palmaditos  
y asta Mañana /

allegro

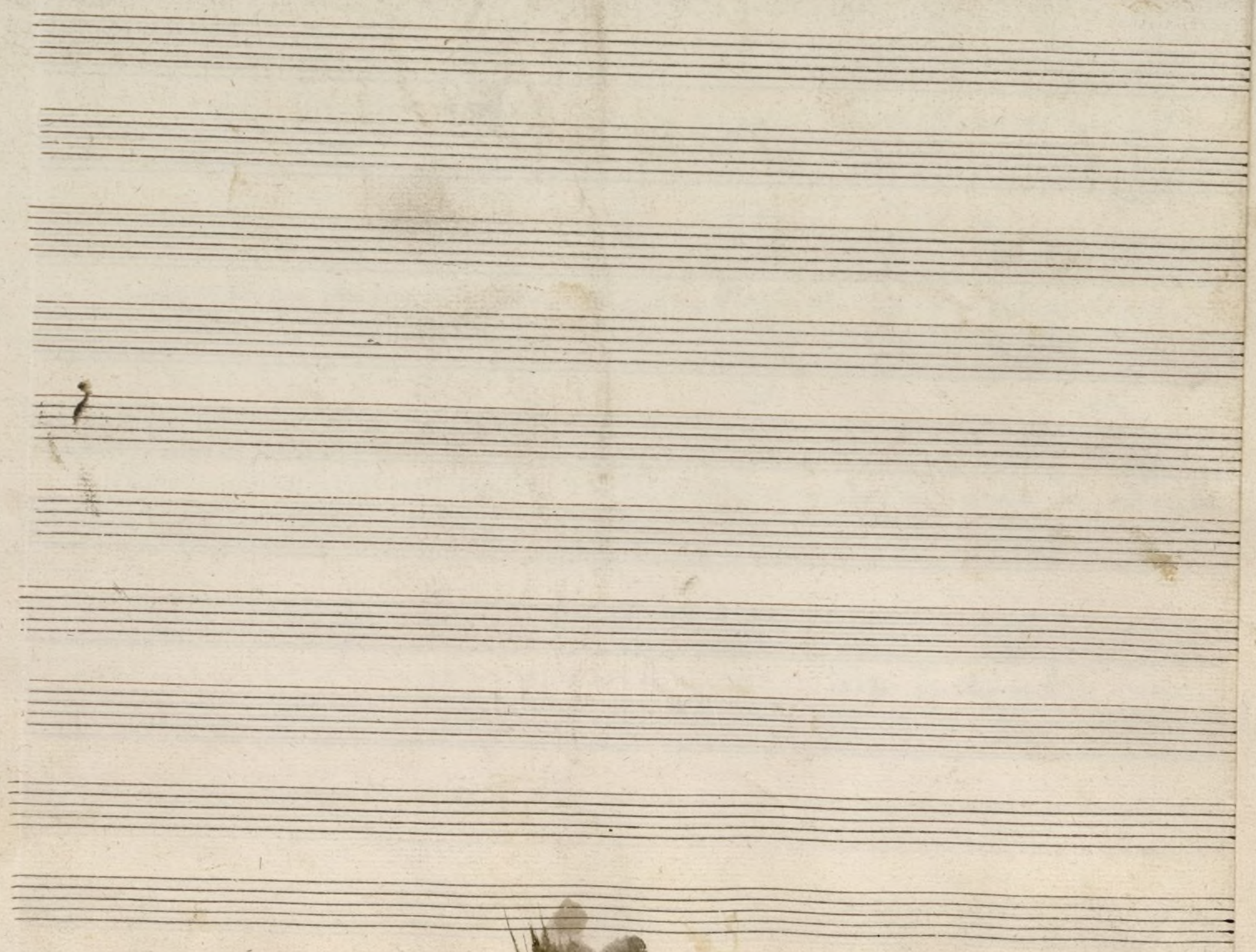


Handwritten musical score on aged paper, featuring five systems of staves. The notation is in ink, with some corrections and markings. The lyrics are written below the staves, appearing to be in Spanish. The text is mirrored across the page, suggesting a double-sided manuscript or a specific notation style. The lyrics include phrases such as "Vos ben meos de mi", "Canto de mi", "Vos ben meos de mi", "Canto de mi", "Vos ben meos de mi", "Canto de mi", "Vos ben meos de mi", "Canto de mi", "Vos ben meos de mi", "Canto de mi".



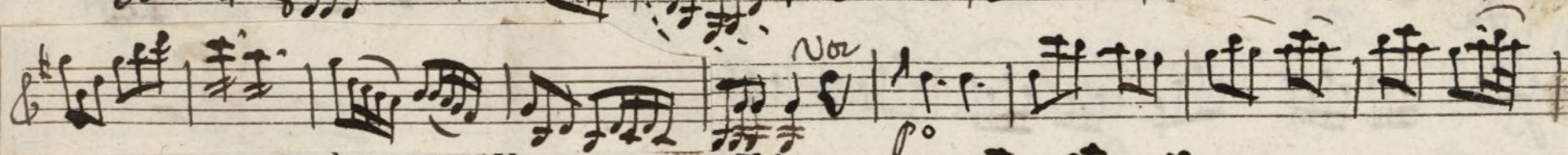
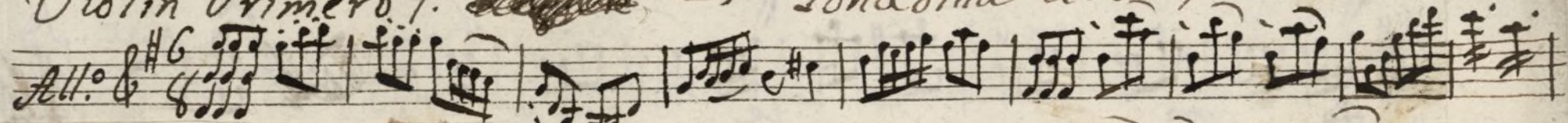




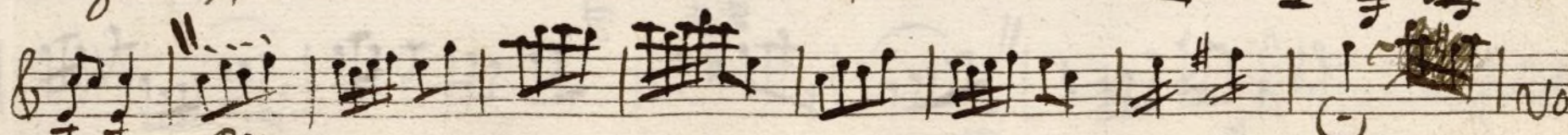
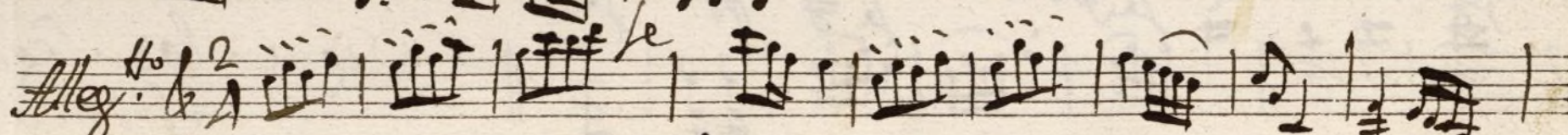
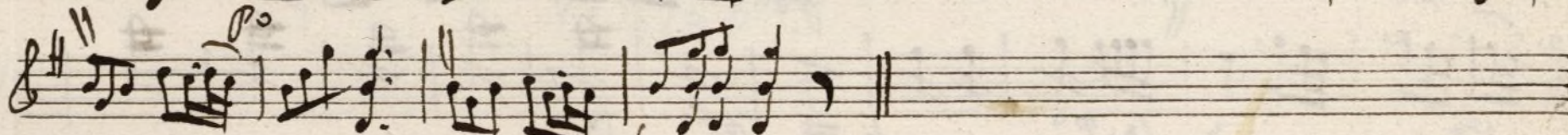
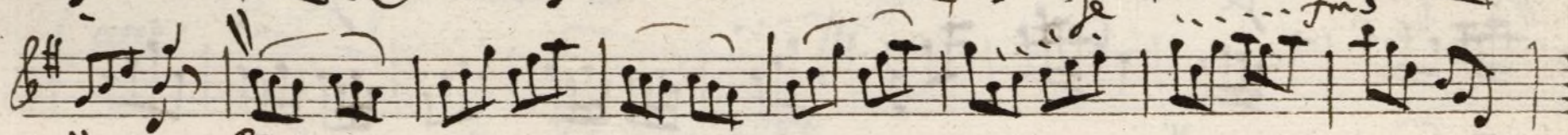
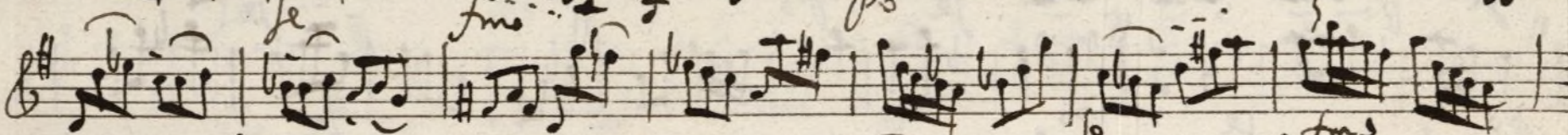
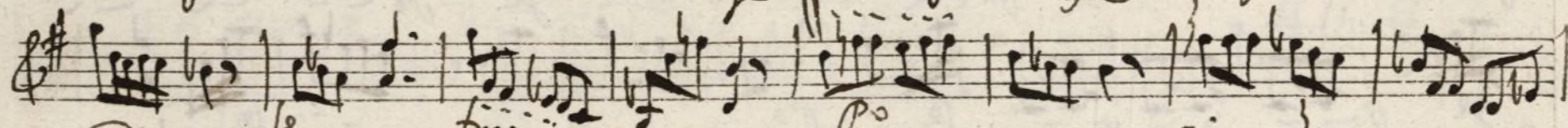
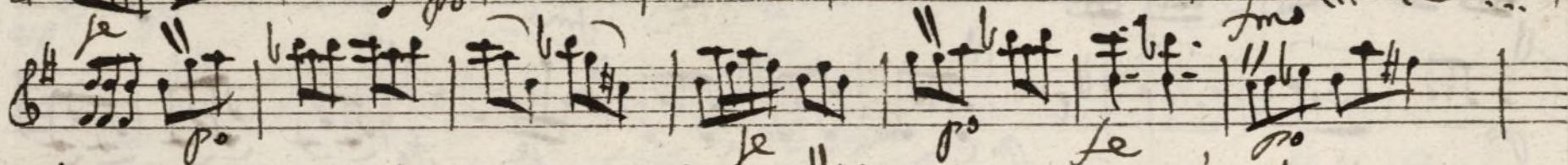
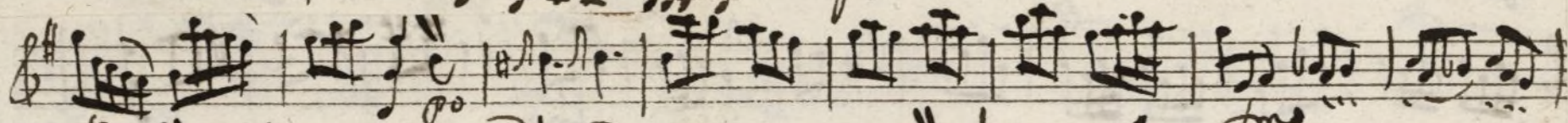




Violin Primero. ~~Capriccio~~ + Sonadilla a solo.



Mus  
92-20



Vol. 1



Handwritten musical score on ten staves. The notation includes various musical symbols such as clefs, notes, rests, and dynamic markings like *se*, *po*, and *fu*. The score concludes with the instruction "No Despacio" and the phrase "Siguen las Segui, últimas" written in cursive.



no.

Handwritten musical score on ten staves. The notation includes various musical symbols such as clefs, notes, rests, and dynamic markings. The first staff begins with a treble clef and a key signature of one flat. The score is written in a cursive, handwritten style. The first staff contains the word "Je" and the second staff contains the word "Presto". The third staff contains the word "Depo". The fourth staff contains the word "Je". The fifth staff contains the word "Je". The sixth staff contains the word "Je". The seventh staff contains the word "Je". The eighth staff contains the word "Je". The ninth staff contains the word "Je". The tenth staff contains the word "Je".

Volli P<sup>mo</sup>



Segni. Allegro. E-flat major, 3/4 time.

Parola

allegro



## Violin Segundo,

+

Mus 92-20

## Sonadilla à solo;

Handwritten musical score for Violin Second, Sonadilla à solo. The score is written on ten staves. The first staff is marked "All." and the key signature is one sharp (F#). The time signature is 6/8. The notation includes various musical symbols such as notes, rests, and dynamic markings like "p" (piano), "f" (forte), and "no" (no). The score concludes with a double bar line and the word "No/hi pto." (No/hi pto.).



Handwritten musical score on ten staves. The notation includes various musical symbols such as clefs, time signatures, notes, rests, and dynamic markings like *le* and *po*. The score is written in a historical style, possibly from the 18th or 19th century. The final staff concludes with the handwritten text "alor Segui villan".







*Sequi. Allegro*  $\text{4/4}$   $\text{3/4}$

*allegro*



O boe 5<sup>o</sup>

Mus 92-20 4

ton<sup>a</sup> a solo; la maza al dia

Handwritten musical score for Oboe 5<sup>o</sup>. The score is written on ten staves, organized into two systems of five staves each. The first system begins with a treble clef, a key signature of one sharp (F#), and a 6/8 time signature. The notation includes various musical symbols such as notes, rests, and dynamic markings (e.g., *f*, *p*, *7*, *4*). The second system begins with a treble clef, a key signature of one sharp (F#), and a 2/4 time signature. The notation continues with notes, rests, and dynamic markings (e.g., *f*, *p*, *2*, *7*). The score concludes with the word "Vlti." on the final staff.



*Flauta Desp. f* *siguen la seq. 5*

*Oboe seq. 5 All. to*



Oboe 2.

ton.<sup>a</sup> a solo: La Maja del dia.

4

Allegro  $\text{f}$  6/8

7 4 4

2 2

Allegro  $\text{f}$  2/4

8 7

voti.



Handwritten musical score for strings, consisting of four staves. The notation includes various rhythmic values, accidentals, and dynamic markings such as *p* and *f*. The fourth staff contains the handwritten instruction *Siguen las Seguidas*.

*Flauta Desc.*

Handwritten musical score for Flauta Descending, consisting of three staves. The notation includes complex rhythmic patterns, accidentals, and dynamic markings. The third staff ends with the instruction *All. tac.*

*Oboe seg. All. no*

Handwritten musical score for Oboe second, consisting of three staves. The notation includes complex rhythmic patterns, accidentals, and dynamic markings. The third staff ends with the instruction *Al Segno.*



*trompa Primera*

+

Mus 92-20

*sonadilla à solo; La Maja del dia!*

Handwritten musical score for Trompa Primera, featuring six staves of music in G major (one sharp) and 6/8 time. The score includes various musical notations such as notes, rests, and dynamic markings like *pp* and *ppp*. The piece concludes with a double bar line on the sixth staff.

Staff 1: *All.<sup>o</sup>* 6/8. Notes: G4, A4, B4, C5, B4, A4, G4, F#4, E4, D4, C4, B3, A3, G3, F#3, E3, D3, C3, B2, A2, G2, F#2, E2, D2, C2, B1, A1, G1, F#1, E1, D1, C1, B0, A0, G0, F#0, E0, D0, C0, B-1, A-1, G-1, F#-1, E-1, D-1, C-1, B-2, A-2, G-2, F#-2, E-2, D-2, C-2, B-3, A-3, G-3, F#-3, E-3, D-3, C-3, B-4, A-4, G-4, F#-4, E-4, D-4, C-4, B-5, A-5, G-5, F#-5, E-5, D-5, C-5, B-6, A-6, G-6, F#-6, E-6, D-6, C-6, B-7, A-7, G-7, F#-7, E-7, D-7, C-7, B-8, A-8, G-8, F#-8, E-8, D-8, C-8, B-9, A-9, G-9, F#-9, E-9, D-9, C-9, B-10, A-10, G-10, F#-10, E-10, D-10, C-10, B-11, A-11, G-11, F#-11, E-11, D-11, C-11, B-12, A-12, G-12, F#-12, E-12, D-12, C-12, B-13, A-13, G-13, F#-13, E-13, D-13, C-13, B-14, A-14, G-14, F#-14, E-14, D-14, C-14, B-15, A-15, G-15, F#-15, E-15, D-15, C-15, B-16, A-16, G-16, F#-16, E-16, D-16, C-16, B-17, A-17, G-17, F#-17, E-17, D-17, C-17, B-18, A-18, G-18, F#-18, E-18, D-18, C-18, B-19, A-19, G-19, F#-19, E-19, D-19, C-19, B-20, A-20, G-20, F#-20, E-20, D-20, C-20, B-21, A-21, G-21, F#-21, E-21, D-21, C-21, B-22, A-22, G-22, F#-22, E-22, D-22, C-22, B-23, A-23, G-23, F#-23, E-23, D-23, C-23, B-24, A-24, G-24, F#-24, E-24, D-24, C-24, B-25, A-25, G-25, F#-25, E-25, D-25, C-25, B-26, A-26, G-26, F#-26, E-26, D-26, C-26, B-27, A-27, G-27, F#-27, E-27, D-27, C-27, B-28, A-28, G-28, F#-28, E-28, D-28, C-28, B-29, A-29, G-29, F#-29, E-29, D-29, C-29, B-30, A-30, G-30, F#-30, E-30, D-30, C-30, B-31, A-31, G-31, F#-31, E-31, D-31, C-31, B-32, A-32, G-32, F#-32, E-32, D-32, C-32, B-33, A-33, G-33, F#-33, E-33, D-33, C-33, B-34, A-34, G-34, F#-34, E-34, D-34, C-34, B-35, A-35, G-35, F#-35, E-35, D-35, C-35, B-36, A-36, G-36, F#-36, E-36, D-36, C-36, B-37, A-37, G-37, F#-37, E-37, D-37, C-37, B-38, A-38, G-38, F#-38, E-38, D-38, C-38, B-39, A-39, G-39, F#-39, E-39, D-39, C-39, B-40, A-40, G-40, F#-40, E-40, D-40, C-40, B-41, A-41, G-41, F#-41, E-41, D-41, C-41, B-42, A-42, G-42, F#-42, E-42, D-42, C-42, B-43, A-43, G-43, F#-43, E-43, D-43, C-43, B-44, A-44, G-44, F#-44, E-44, D-44, C-44, B-45, A-45, G-45, F#-45, E-45, D-45, C-45, B-46, A-46, G-46, F#-46, E-46, D-46, C-46, B-47, A-47, G-47, F#-47, E-47, D-47, C-47, B-48, A-48, G-48, F#-48, E-48, D-48, C-48, B-49, A-49, G-49, F#-49, E-49, D-49, C-49, B-50, A-50, G-50, F#-50, E-50, D-50, C-50, B-51, A-51, G-51, F#-51, E-51, D-51, C-51, B-52, A-52, G-52, F#-52, E-52, D-52, C-52, B-53, A-53, G-53, F#-53, E-53, D-53, C-53, B-54, A-54, G-54, F#-54, E-54, D-54, C-54, B-55, A-55, G-55, F#-55, E-55, D-55, C-55, B-56, A-56, G-56, F#-56, E-56, D-56, C-56, B-57, A-57, G-57, F#-57, E-57, D-57, C-57, B-58, A-58, G-58, F#-58, E-58, D-58, C-58, B-59, A-59, G-59, F#-59, E-59, D-59, C-59, B-60, A-60, G-60, F#-60, E-60, D-60, C-60, B-61, A-61, G-61, F#-61, E-61, D-61, C-61, B-62, A-62, G-62, F#-62, E-62, D-62, C-62, B-63, A-63, G-63, F#-63, E-63, D-63, C-63, B-64, A-64, G-64, F#-64, E-64, D-64, C-64, B-65, A-65, G-65, F#-65, E-65, D-65, C-65, B-66, A-66, G-66, F#-66, E-66, D-66, C-66, B-67, A-67, G-67, F#-67, E-67, D-67, C-67, B-68, A-68, G-68, F#-68, E-68, D-68, C-68, B-69, A-69, G-69, F#-69, E-69, D-69, C-69, B-70, A-70, G-70, F#-70, E-70, D-70, C-70, B-71, A-71, G-71, F#-71, E-71, D-71, C-71, B-72, A-72, G-72, F#-72, E-72, D-72, C-72, B-73, A-73, G-73, F#-73, E-73, D-73, C-73, B-74, A-74, G-74, F#-74, E-74, D-74, C-74, B-75, A-75, G-75, F#-75, E-75, D-75, C-75, B-76, A-76, G-76, F#-76, E-76, D-76, C-76, B-77, A-77, G-77, F#-77, E-77, D-77, C-77, B-78, A-78, G-78, F#-78, E-78, D-78, C-78, B-79, A-79, G-79, F#-79, E-79, D-79, C-79, B-80, A-80, G-80, F#-80, E-80, D-80, C-80, B-81, A-81, G-81, F#-81, E-81, D-81, C-81, B-82, A-82, G-82, F#-82, E-82, D-82, C-82, B-83, A-83, G-83, F#-83, E-83, D-83, C-83, B-84, A-84, G-84, F#-84, E-84, D-84, C-84, B-85, A-85, G-85, F#-85, E-85, D-85, C-85, B-86, A-86, G-86, F#-86, E-86, D-86, C-86, B-87, A-87, G-87, F#-87, E-87, D-87, C-87, B-88, A-88, G-88, F#-88, E-88, D-88, C-88, B-89, A-89, G-89, F#-89, E-89, D-89, C-89, B-90, A-90, G-90, F#-90, E-90, D-90, C-90, B-91, A-91, G-91, F#-91, E-91, D-91, C-91, B-92, A-92, G-92, F#-92, E-92, D-92, C-92, B-93, A-93, G-93, F#-93, E-93, D-93, C-93, B-94, A-94, G-94, F#-94, E-94, D-94, C-94, B-95, A-95, G-95, F#-95, E-95, D-95, C-95, B-96, A-96, G-96, F#-96, E-96, D-96, C-96, B-97, A-97, G-97, F#-97, E-97, D-97, C-97, B-98, A-98, G-98, F#-98, E-98, D-98, C-98, B-99, A-99, G-99, F#-99, E-99, D-99, C-99, B-100, A-100, G-100, F#-100, E-100, D-100, C-100, B-101, A-101, G-101, F#-101, E-101, D-101, C-101, B-102, A-102, G-102, F#-102, E-102, D-102, C-102, B-103, A-103, G-103, F#-103, E-103, D-103, C-103, B-104, A-104, G-104, F#-104, E-104, D-104, C-104, B-105, A-105, G-105, F#-105, E-105, D-105, C-105, B-106, A-106, G-106, F#-106, E-106, D-106, C-106, B-107, A-107, G-107, F#-107, E-107, D-107, C-107, B-108, A-108, G-108, F#-108, E-108, D-108, C-108, B-109, A-109, G-109, F#-109, E-109, D-109, C-109, B-110, A-110, G-110, F#-110, E-110, D-110, C-110, B-111, A-111, G-111, F#-111, E-111, D-111, C-111, B-112, A-112, G-112, F#-112, E-112, D-112, C-112, B-113, A-113, G-113, F#-113, E-113, D-113, C-113, B-114, A-114, G-114, F#-114, E-114, D-114, C-114, B-115, A-115, G-115, F#-115, E-115, D-115, C-115, B-116, A-116, G-116, F#-116, E-116, D-116, C-116, B-117, A-117, G-117, F#-117, E-117, D-117, C-117, B-118, A-118, G-118, F#-118, E-118, D-118, C-118, B-119, A-119, G-119, F#-119, E-119, D-119, C-119, B-120, A-120, G-120, F#-120, E-120, D-120, C-120, B-121, A-121, G-121, F#-121, E-121, D-121, C-121, B-122, A-122, G-122, F#-122, E-122, D-122, C-122, B-123, A-123, G-123, F#-123, E-123, D-123, C-123, B-124, A-124, G-124, F#-124, E-124, D-124, C-124, B-125, A-125, G-125, F#-125, E-125, D-125, C-125, B-126, A-126, G-126, F#-126, E-126, D-126, C-126, B-127, A-127, G-127, F#-127, E-127, D-127, C-127, B-128, A-128, G-128, F#-128, E-128, D-128, C-128, B-129, A-129, G-129, F#-129, E-129, D-129, C-129, B-130, A-130, G-130, F#-130, E-130, D-130, C-130, B-131, A-131, G-131, F#-131, E-131, D-131, C-131, B-132, A-132, G-132, F#-132, E-132, D-132, C-132, B-133, A-133, G-133, F#-133, E-133, D-133, C-133, B-134, A-134, G-134, F#-134, E-134, D-134, C-134, B-135, A-135, G-135, F#-135, E-135, D-135, C-135, B-136, A-136, G-136, F#-136, E-136, D-136, C-136, B-137, A-137, G-137, F#-137, E-137, D-137, C-137, B-138, A-138, G-138, F#-138, E-138, D-138, C-138, B-139, A-139, G-139, F#-139, E-139, D-139, C-139, B-140, A-140, G-140, F#-140, E-140, D-140, C-140, B-141, A-141, G-141, F#-141, E-141, D-141, C-141, B-142, A-142, G-142, F#-142, E-142, D-142, C-142, B-143, A-143, G-143, F#-143, E-143, D-143, C-143, B-144, A-144, G-144, F#-144, E-144, D-144, C-144, B-145, A-145, G-145, F#-145, E-145, D-145, C-145, B-146, A-146, G-146, F#-146, E-146, D-146, C-146, B-147, A-147, G-147, F#-147, E-147, D-147, C-147, B-148, A-148, G-148, F#-148, E-148, D-148, C-148, B-149, A-149, G-149, F#-149, E-149, D-149, C-149, B-150, A-150, G-150, F#-150, E-150, D-150, C-150, B-151, A-151, G-151, F#-151, E-151, D-151, C-151, B-152, A-152, G-152, F#-152, E-152, D-152, C-152, B-153, A-153, G-153, F#-153, E-153, D-153, C-153, B-154, A-154, G-154, F#-154, E-154, D-154, C-154, B-155, A-155, G-155, F#-155, E-155, D-155, C-155, B-156, A-156, G-156, F#-156, E-156, D-156, C-156, B-157, A-157, G-157, F#-157, E-157, D-157, C-157, B-158, A-158, G-158, F#-158, E-158, D-158, C-158, B-159, A-159, G-159, F#-159, E-159, D-159, C-159, B-160, A-160, G-160, F#-160, E-160, D-160, C-160, B-161, A-161, G-161, F#-161, E-161, D-161, C-161, B-162, A-162, G-162, F#-162, E-162, D-162, C-162, B-163, A-163, G-163, F#-163, E-163, D-163, C-163, B-164, A-164, G-164, F#-164, E-164, D-164, C-164, B-165, A-165, G-165, F#-165, E-165, D-165, C-165, B-166, A-166, G-166, F#-166, E-166, D-166, C-166, B-167, A-167, G-167, F#-167, E-167, D-167, C-167, B-168, A-168, G-168, F#-168, E-168, D-168, C-168, B-169, A-169, G-169, F#-169, E-169, D-169, C-169, B-170, A-170, G-170, F#-170, E-170, D-170, C-170, B-171, A-171, G-171, F#-171, E-171, D-171, C-171, B-172, A-172, G-172, F#-172, E-172, D-172, C-172, B-173, A-173, G-173, F#-173, E-173, D-173, C-173, B-174, A-174, G-174, F#-174, E-174, D-174, C-174, B-175, A-175, G-175, F#-175, E-175, D-175, C-175, B-176, A-176, G-176, F#-176, E-176, D-176, C-176, B-177, A-177, G-177, F#-177, E-177, D-177, C-177, B-178, A-178, G-178, F#-178, E-178, D-178, C-178, B-179, A-179, G-179, F#-179, E-179, D-179, C-179, B-180, A-180, G-180, F#-180, E-180, D-180, C-180, B-181, A-181, G-181, F#-181, E-181, D-181, C-181, B-182, A-182, G-182, F#-182, E-182, D-182, C-182, B-183, A-183, G-183, F#-183, E-183, D-183, C-183, B-184, A-184, G-184, F#-184, E-184, D-184, C-184, B-185, A-185, G-185, F#-185, E-185, D-185, C-185, B-186, A-186, G-186, F#-186, E-186, D-186, C-186, B-187, A-187, G-187, F#-187, E-187, D-187, C-187, B-188, A-188, G-188, F#-188, E-188, D-188, C-188, B-189, A-189, G-189, F#-189, E-189, D-189, C-189, B-190, A-190, G-190, F#-190, E-190, D-190, C-190, B-191, A-191, G-191, F#-191, E-191, D-191, C-191, B-192, A-192, G-192, F#-192, E-192, D-192, C-192, B-193, A-193, G-193, F#-193, E-193, D-193, C-193, B-194, A-194, G-194, F#-194, E-194, D-194, C-194, B-195, A-195, G-195, F#-195, E-195, D-195, C-195, B-196, A-196, G-196, F#-196, E-196, D-196, C-196, B-197, A-197, G-197, F#-197, E-197, D-197, C-197, B-198, A-198, G-198, F#-198, E-198, D-198, C-198, B-199, A-199, G-199, F#-199, E-199, D-199, C-199, B-200, A-200, G-200, F#-200, E-200, D-200, C-200, B-201, A-201, G-201, F#-201, E-201, D-201, C-201, B-202, A-202, G-202, F#-202, E-202, D-202, C-202, B-203, A-203, G-203, F#-203, E-203, D-203, C-203, B-204, A-204, G-204, F#-204, E-204, D-204, C-204, B-205, A-205, G-205, F#-205, E-205, D-205, C-205, B-206, A-206, G-206, F#-206, E-206, D-206, C-206, B-207, A-207, G-207, F#-207, E-207, D-207, C-207, B-208, A-208, G-208, F#-208, E-208, D-208, C-208, B-209, A-209, G-209, F#-209, E-209, D-209, C-209, B-210, A-210, G-210, F#-210, E-210, D-210, C-210, B-211, A-211, G-211, F#-211, E-211, D-211, C-211, B-212, A-212, G-212, F#-212, E-212, D-212, C-212, B-213, A-213, G-213, F#-213, E-213, D-213, C-213, B-214, A-214, G-214, F#-214, E-214, D-214, C-214, B-215, A-215, G-215, F#-215, E-215, D-215, C-215, B-216, A-216, G-216, F#-216, E-216, D-216, C-216, B-217, A-217, G-217, F#-217, E-217, D-217, C-217, B-218, A-218, G-218, F#-218, E-218, D-218, C-218, B-219, A-219, G-219, F#-219, E-219, D-219, C-219, B-220, A-220, G-220, F#-220, E-220, D-220, C-220, B-221, A-221, G-221, F#-221, E-221, D-221, C-221, B-222, A-222, G-222, F#-222, E-222, D-222, C-222, B-223, A-223, G-223, F#-223, E-223, D-223, C-223, B-224, A-224, G-224, F#-224, E-224, D-224, C-224, B-225, A-225, G-225, F#-225, E-225, D-225, C-225, B-226, A-226, G-226, F#-226, E-226, D-226, C-226, B-227, A-227, G-227, F#-227, E-227, D-227, C-227, B-228, A-228, G-228, F#-228, E-228, D-228, C-228, B-229, A-229, G-229, F#-229, E-229, D-229, C-229, B-230, A-230, G-230, F#-230, E-230, D-230, C-230, B-231, A-231, G-231, F#-231, E-231, D-231, C-231, B-232, A-232, G-232, F#-232, E-232, D-232, C-232, B-233, A-233, G-233, F#-233, E-233, D-233, C-233, B-234, A-234, G-234, F#-234, E-234, D-234, C-234, B-235, A-235, G-235, F#-235, E-235, D-235, C-235, B-236, A-236, G-236, F#-236, E-236, D-236, C-236, B-237, A-237, G-237, F#-237, E-237, D-237, C-237, B-238, A-238, G-238, F#-238, E-238, D-238, C-238, B-239, A-239, G-239, F#-239, E-239, D-239, C-239, B-240, A-240, G-240, F#-240, E-240, D-240, C-240, B-241, A-241, G-241, F#-241, E-241, D-241, C-241, B-242, A-242, G-242, F#-242, E-242, D-242, C-242, B-243, A-243, G-243, F#-243, E-243, D-243, C-243, B-244, A-244, G-244, F#-244, E-244, D-244, C-244, B-245, A-245, G-245, F#-245, E-245, D-245, C-245, B-246, A-246, G-246, F#-246, E-246, D-246, C-246, B-247, A-247, G-247, F#-247, E-247, D-247, C-247, B-248, A-248, G-248, F#-248, E-248, D-248, C-248, B-249, A-249, G-249, F#-249, E-249, D-249, C-249, B-250, A-250, G-250, F#-250, E-250, D-250, C-250, B-251, A-251, G-251, F#-251, E-251, D-251, C-251, B-252, A-252, G-252, F#-252, E-252, D-252, C-252, B-253, A-253, G-253, F#-253, E-253, D-253, C-253, B-254, A-254, G-254, F#-254, E-254, D-254, C-254, B-255, A-255, G-255, F#-255, E-255, D-255, C-255, B-256, A-256, G-256, F#-256, E-256, D-256, C-256, B-257, A-257, G-257, F#-257, E-257, D-257, C-257, B-258, A-258, G-258, F#-258, E-258, D-258, C-258, B-259, A-259, G-259, F#-259, E-259, D-259, C-259, B-260, A-260, G-260, F#-260, E-260, D-260, C-260, B-261, A-261, G-261, F#-261, E-261, D-261, C-261, B-262, A-262, G-262, F#-262, E-262, D-262, C-262, B-263, A-263, G-263, F#-263, E-263, D-263, C-263, B-264, A-264, G-264, F#-264, E-264, D-264, C-264, B-265, A-265, G-265, F#-265, E-265, D-265, C-265, B-266, A-266, G-266, F#-266, E-266, D-266, C-266, B-267, A-267, G-267, F#-267, E-267, D-267, C-267, B-268, A-268, G-268, F#-268, E-268, D-268, C-268, B-269, A-269, G-269, F#-269, E-269, D-269, C-269, B-270, A-270, G-270, F#-270, E-270, D-270, C-270, B-271, A-271, G-271, F#-271, E-271, D-271, C-271, B-272, A-272, G-272, F#-272, E-272, D-272, C-272, B-273, A-273, G-273, F#-273, E-273, D-273, C-273, B-274, A-274, G-274, F#-274, E-274, D-274, C-274, B-275, A-275, G-275, F#-275, E-275, D-275, C-275, B-276, A-276, G-276, F#-276, E-276, D-276, C-276, B-277, A-277, G-277, F#-277, E-277, D-277, C-277, B-278, A-278, G-278, F#-278, E-278, D-278, C-278, B-279, A-279, G-279, F#-279, E-279, D-279, C-279, B-280, A-280, G-280, F#-280, E-280, D-280, C-280, B-281, A-281, G-281, F#-281, E-281, D-281, C-281, B-282, A-282, G-282, F#-282, E-282, D-282, C-282, B-283, A-283, G-283, F#-283, E-283, D-283, C-283, B-284, A-284, G-284, F#-284, E-284, D-284, C-284, B-285, A-285, G-285, F#-285, E-285, D-285, C-285, B-286, A-286, G-286, F#-286, E-286, D-286, C-286, B-287, A-287, G-287, F#-287, E-287, D-287, C-287, B-288, A-288, G-288, F#-288, E-288, D-288, C-288, B-289, A-289, G-289, F#-289, E-289, D-289, C-289, B-290, A-290, G-290, F#-290, E-290, D-290, C-290, B-291, A-291, G-291, F#-291, E-291, D-291, C-291, B-292, A-292, G-292, F#-292, E-292, D-292, C-292, B-293, A-293, G-293, F#-293, E-293, D-293, C-293, B-294, A-294, G-294, F#-294, E-294, D-294, C-294, B-295, A-295, G-295, F#-295, E-295, D-295, C-295, B-296, A-296, G-296, F#-296, E-29



*No* *Desp.<sup>o</sup>*  $\text{3/4}$  *se*

*Preto*  $\text{2/4}$  *Desp.<sup>o</sup>* *se*

*se*

*Al.<sup>o</sup> face*

*Inelasa*

*Sequi. Alleg.<sup>ro</sup>*  $\text{3/4}$  *se*

*se*

*allegro*







*No* Despacis  $\text{3/4}$   $p^o$   $\text{2 Presto}$   $\text{4/4}$   $p^o$   $\text{3 Depo: le}$   $\text{4/4}$   $p^o$   $\text{3}$   $\text{Le}$

*No* All.<sup>o</sup> tace

Inelata

Segui. Alleg.<sup>ro</sup>  $\text{3/4}$   $p^o$   $\text{3}$   $\text{Le p^o}$



Contrabajo.

+

Mus 92-20

Sonadilla à solo: La Maja del día.

Handwritten musical score for Contrabajo (Double Bass), titled "Sonadilla à solo: La Maja del día." The score is written on ten staves, with the first staff marked "All.<sup>o</sup>" and a 6/8 time signature. The key signature is one sharp (F#). The notation includes various musical symbols such as notes, rests, and dynamic markings like "p<sup>o</sup>" (piano) and "f<sup>o</sup>" (forte). The piece concludes with a double bar line and the word "Vol<sup>ti</sup>" (Volte) written below the final staff.



Handwritten musical score on ten staves. The notation includes various musical symbols such as clefs, time signatures (e.g., 2/4), notes, rests, and dynamic markings (e.g., *p*, *le*). The score concludes with the handwritten text "alas segui." followed by a double bar line and a superscripted '5'.



No

No

Desp. 3/4

p

Presto 2/4

Desp. 3/4

p

No

Handwritten musical score for three staves. The first staff begins with a treble clef, a key signature of one flat (B-flat), and a 2/4 time signature. The notation includes various note values, rests, and dynamic markings such as *pp* and *se*. The second staff continues the melody with similar notation. The third staff concludes with a double bar line and the word *Volte* written below the staff.



*Segu. Allegro*  $\text{No } \text{D} = \text{b} \text{ 3/4}$

*allegro*