

Leg. 5. 36.

Mus 97-7

Leg. 1. n. 40

+

Tonadilla

+
a Duo

Una Molinera, y

un Cazador.

Con Viol. y Trompas.

Lo

1864 ÷

Pastoral All.º

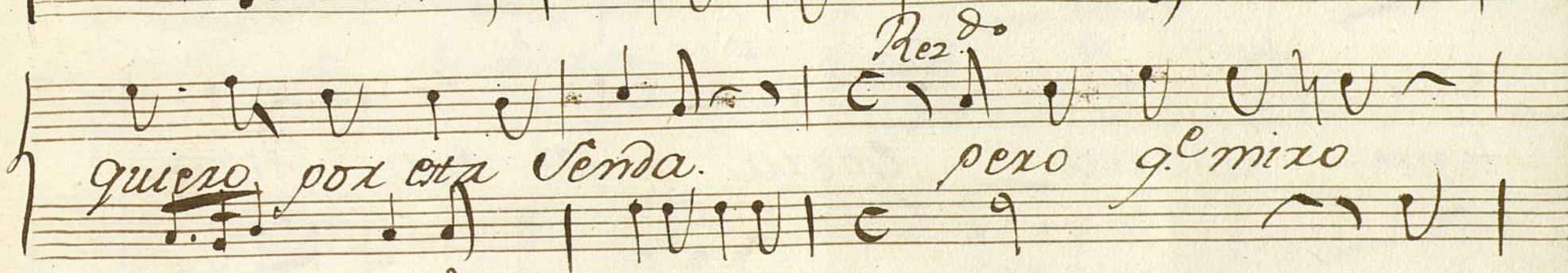
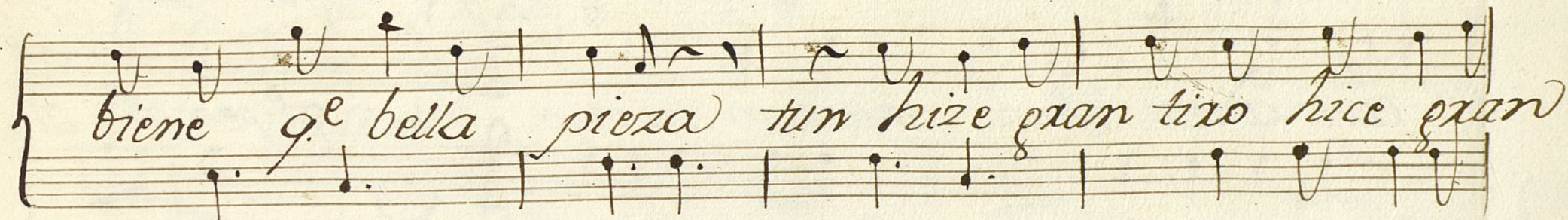
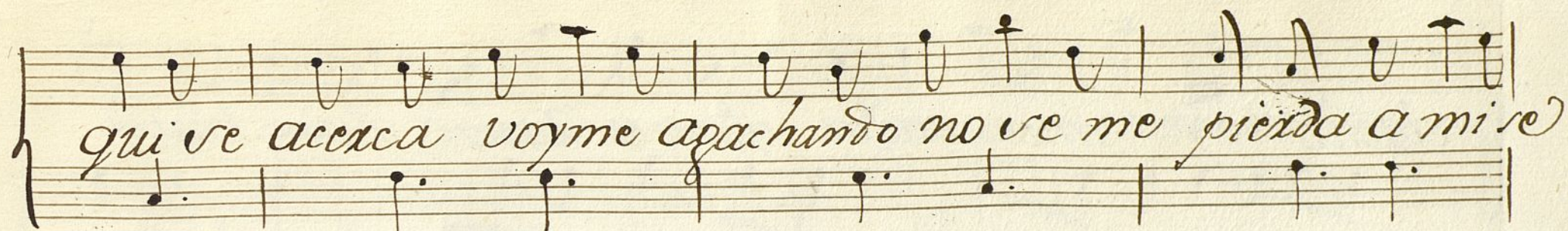
A handwritten musical score on aged, slightly torn paper. The title 'Pastoral All.º' is written in a cursive hand at the top left. The score is arranged in three systems, each with two staves. The first system is a grand staff with a treble clef and a bass clef, both in G-clef position (one line above the staff). The key signature has one flat (B-flat), and the time signature is 6/8. The music is written in a cursive hand. The first system consists of two staves. The first staff has a treble clef and a key signature of one flat. The second staff has a bass clef and a key signature of one flat. The music is written in a cursive hand. The second system also consists of two staves. The first staff has a treble clef and a key signature of one flat. The second staff has a bass clef and a key signature of one flat. The music is written in a cursive hand. The third system also consists of two staves. The first staff has a treble clef and a key signature of one flat. The second staff has a bass clef and a key signature of one flat. The music is written in a cursive hand.

Molinera.

Mus 97-7

Entre estos Riscos Entre estas
peñas Vivo gustosa Contenta y quieta
Jamás e visto mas g^eestas breñas Aquellos
troncos y estas be xedas Nunca e vi-
to mas sentes q^e las q^e aqui se albergan si acaso ha-

Handwritten musical score on five staves. The lyrics are in Spanish and are written in a cursive hand. The music is written in a single system across the five staves. The lyrics are:
bxa mas hombres halla en las otras tierras pero que
miso texible pena un loto fiero
a mi se acerca Cielos to muero texible
pena aliento falta el pecho tiembla O
g^e Contento g^e vella presa si no la pierdo a-

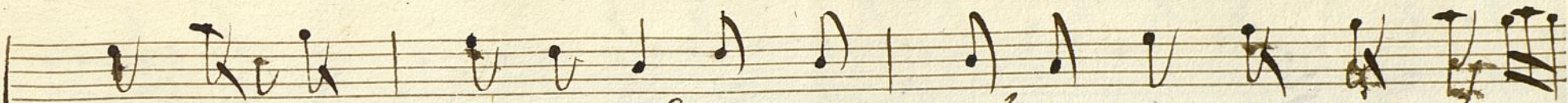


dueño oye mis quejas q.^e no es razón q.^e en triste
 Así a tus ojos mueran no no no q.^e pena al-
 bricias q.^e ansia q.^e alienta q.^e veo de-
 tente aparta espesa q.^e crece un-
 hombre q.^e exmoro q.^e bella en aguas e-


traje con aquellas señas / amas e visto otro en mi-
Vida entera. oye dulce dueño mis finas tex-
nezas q. el alma te adora y amor te venera que
bello y. hermoso q. afable presencia

The image shows a handwritten musical score on aged paper. It consists of five systems of music, each with a vocal line and a piano accompaniment line. The lyrics are written in Spanish. The first system has the lyrics 'traje con aquellas señas / amas e visto otro en mi-'. The second system has 'Vida entera. oye dulce dueño mis finas tex-'. The third system has 'nezas q. el alma te adora y amor te venera que'. The fourth system has 'bello y. hermoso q. afable presencia'. The fifth system is empty. The piano accompaniment is written in a simple, early style with chords and single notes. There are some markings like 'Car.' and 'lon 2.' above the piano lines. The paper is yellowed and has some stains.

quiera amor q' me afecto su pecho vengza su-
pecho vengza.
Seq. And.
Voli ro
Peregrini -
Alti mari -
Dime due-




no estian /exo q^easi me alagas
do esta mudo y yo pensaba
no del alma si tu fi neza

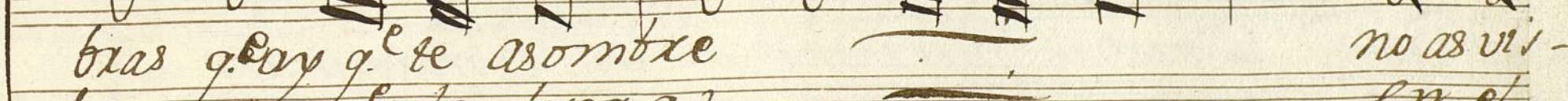




no extrañes q^e me admire de tus pa la.
el q^e todos los hombres tambien lo esta.
padeceza de acasos la continen -

Cad. dox



bras q^eay q^e te asombre no as vi -
ban aing^e lo fuera en el -
cia no dulce dueño /uxo

to de este modo hablan los hombres no
 amor los ojos viven de lenguas
 verte constante siglos Eternos

Mol.to *Caz.do*
 amado dueño di-
 mi dulce dueño a
 dame los brazos to-

Vina Dios quiereme si si amame si -
 nada prenda
 ma mi dueño

vi oyeme si si dormite de mi pecho las Expre-
 premien tus dulces lazos a mi fi.
 O q.^e poca fortuna duxa un con.

siomes-
 neza.
 Repite do mas.

tento

Mol.^{ra}
 All.^o Detente bato no te alborotes muebate agra.

do aguete Toben gervu pre sencia su bello-

potte su Corte via sus Expre siones merecen

g.e. ve quede aqui esta noche Yo lo apxader-

co de mil Amores y la tonada aqui seño-

res Con unas Segui di llas daremos Cox-

te daremos Corte.

Car. dox

And. un poco All.

tixa Acierta Me de el molino xu xu ande el ze.
 dazo chas chas mi dulce dueño ai ay
 clamo pi pi pi xu xu xu xu No te ado-chas e - c.

c. moxe mi xu xu xu xu Vo te que pi pi pi pi quexi-

di g. e. g. n muel con vique g. n tixa acienta-

Pox g. e. bea
 Cada qual con su gusto
 seguir su tema -

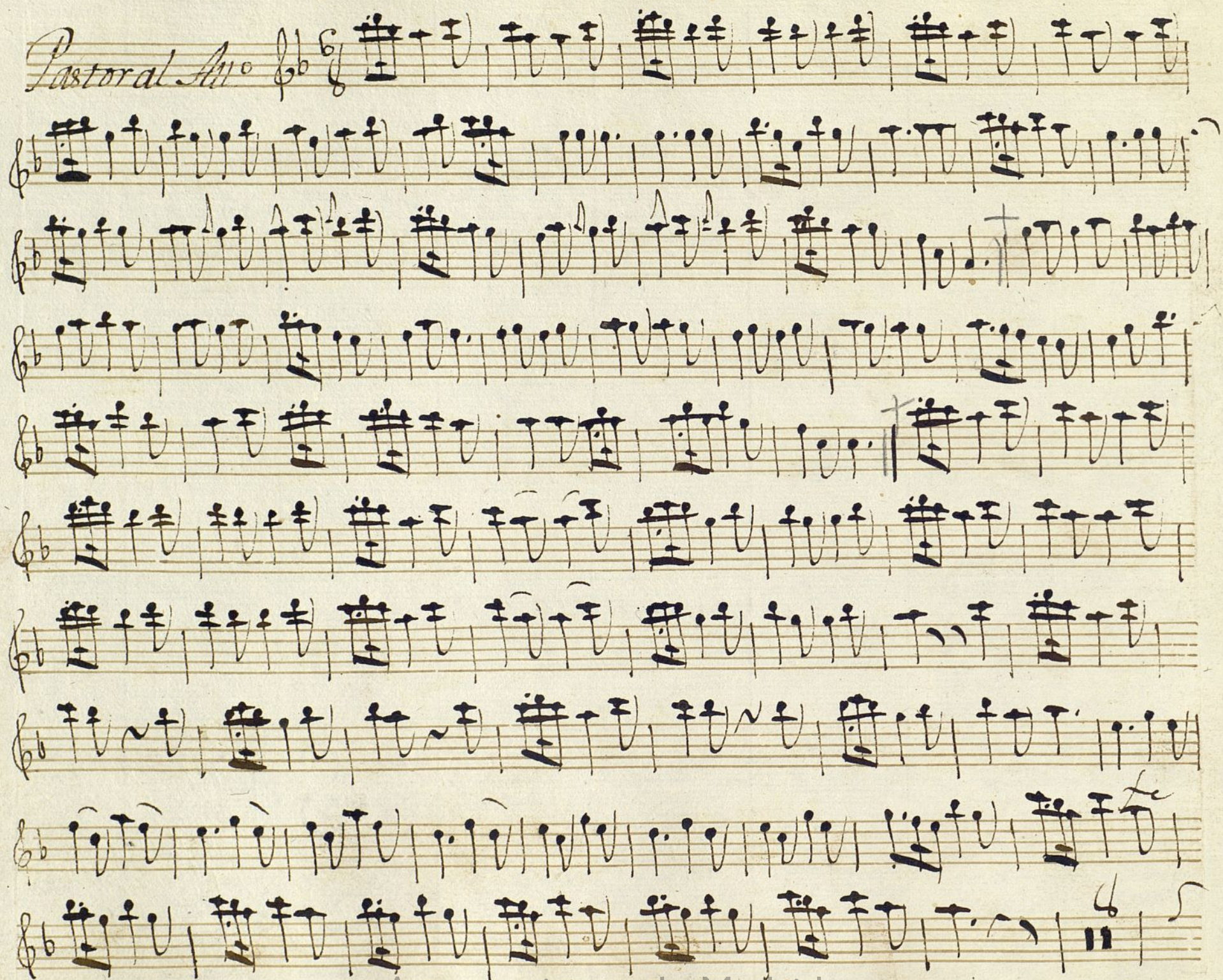
Ayuntamiento de Madrid

+

Violin & flauta 1.^o

Tonadilla a duo

Una Molinera, y un Carádon.



Handwritten musical score on six staves. The notation includes various musical symbols such as clefs, notes, rests, and dynamic markings. The first staff ends with a measure containing a fermata and the marking *Res.^{do}*. The second staff begins with a measure containing a fermata and the marking *Dep.^o*. The third staff begins with a measure containing a fermata and the marking *Al.^o*. The fourth staff begins with a measure containing a fermata and the marking *Al.^o*. The fifth staff begins with a measure containing a fermata and the marking *Al.^o*. The sixth staff begins with a measure containing a fermata and the marking *Al.^o*.

Handwritten musical score on four staves. The notation includes various musical symbols such as clefs, notes, rests, and dynamic markings. The first staff begins with a measure containing a fermata and the marking *Seg.^o And.^o*. The second staff begins with a measure containing a fermata and the marking *Al.^o*. The third staff begins with a measure containing a fermata and the marking *Al.^o*. The fourth staff begins with a measure containing a fermata and the marking *Al.^o*. The fourth staff ends with a measure containing a fermata and the marking *al Segno . || Sigue*.

no.

Handwritten musical score for a piece titled "no." (numbered). The score is written on six staves. The first staff begins with the tempo marking "Al.º" (Allegro) and the time signature "3/4". The notation includes various musical symbols such as notes, rests, and accidentals. The second staff contains a measure with a "9." marking. The third staff ends with a double bar line. The fourth staff is marked "Seq. And.º" (Sequenza Andante) and continues the musical notation. The fifth and sixth staves also contain musical notation, with the sixth staff ending with a double bar line.

al Vigno
dos mas.

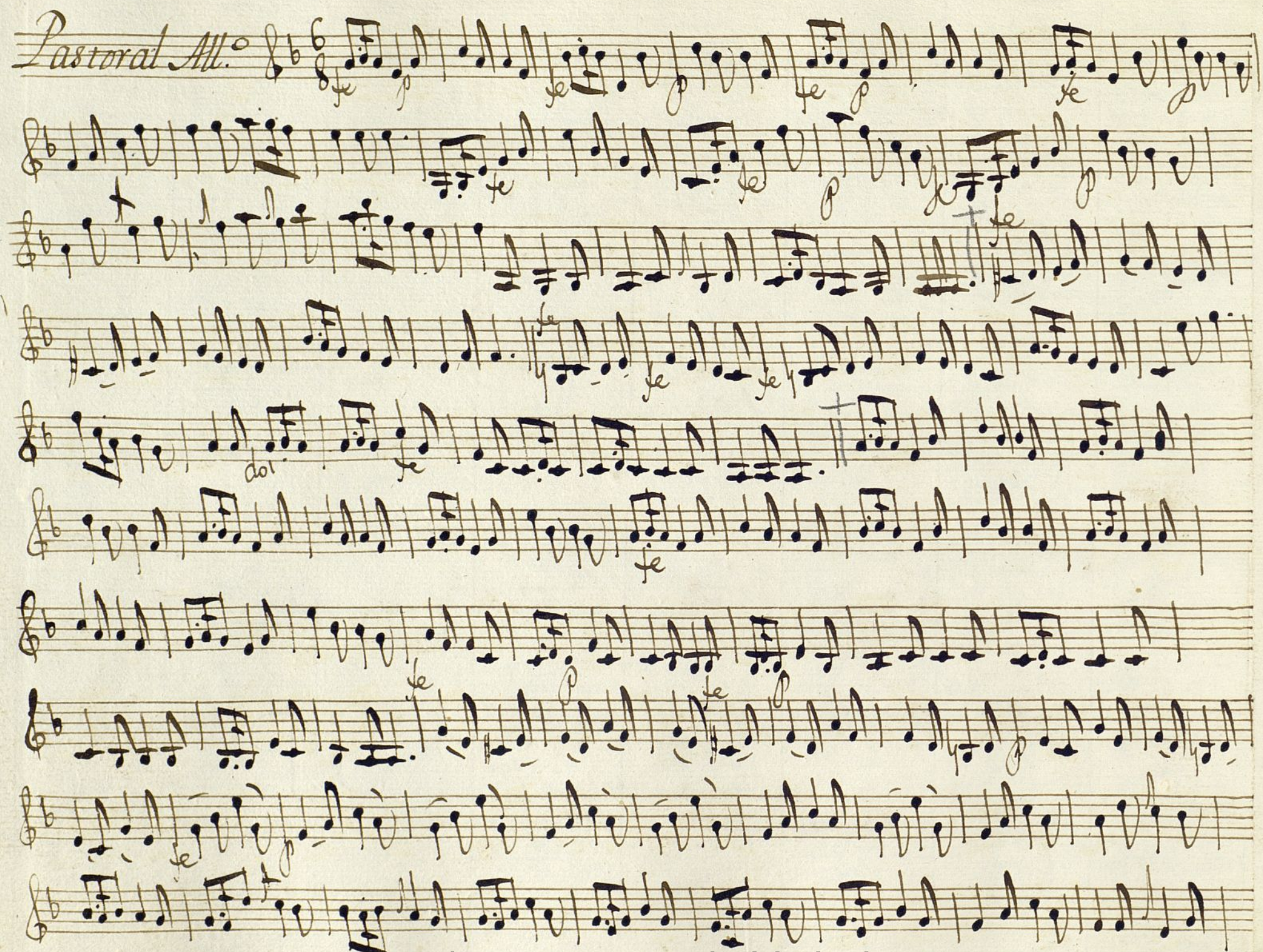
7

Violin 2^o

Tonad.^a a duo

Una Molinera, y

un Cazador

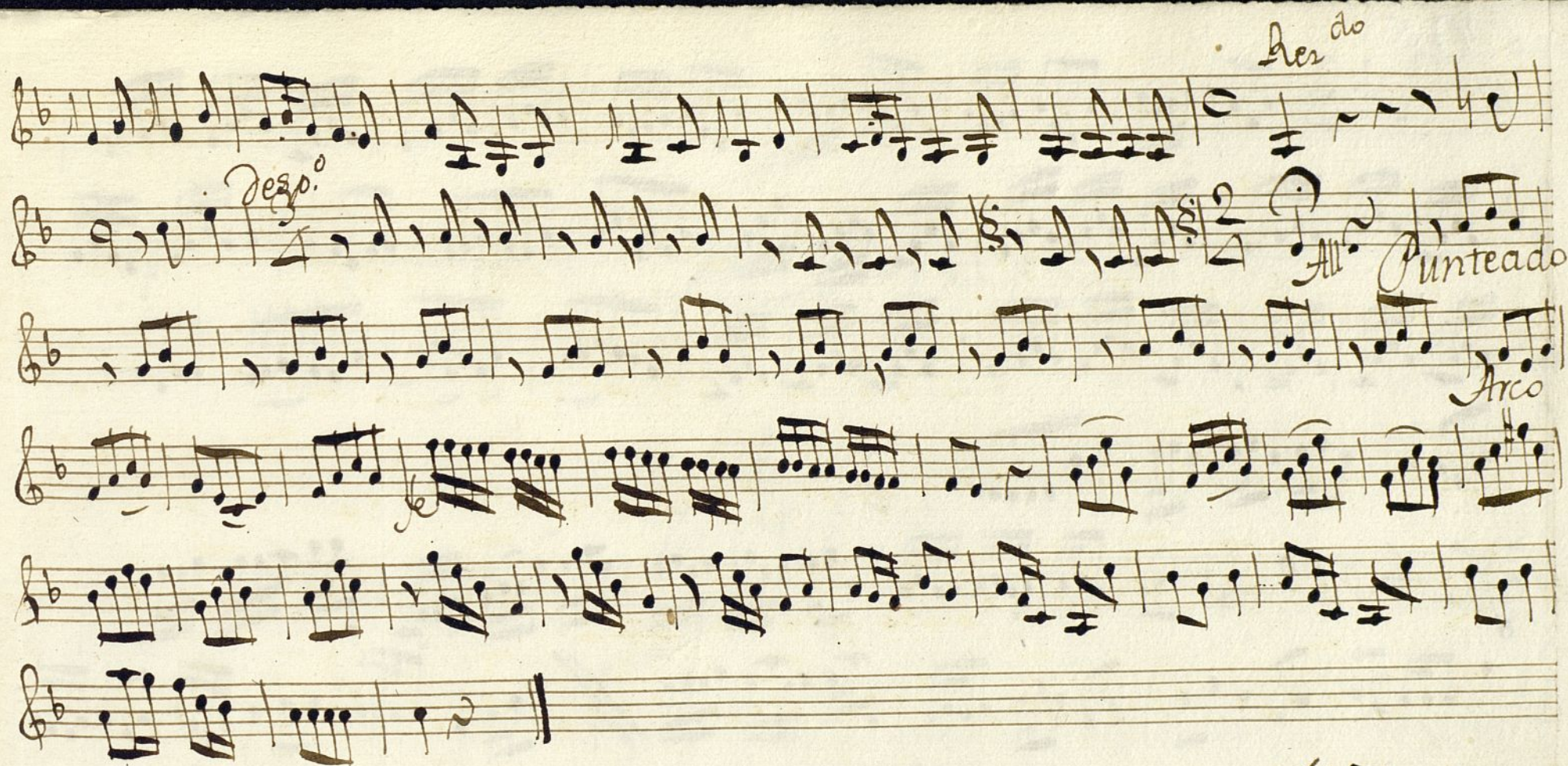


des^{do}

Desp.^o

All.^o Punteado

Arco

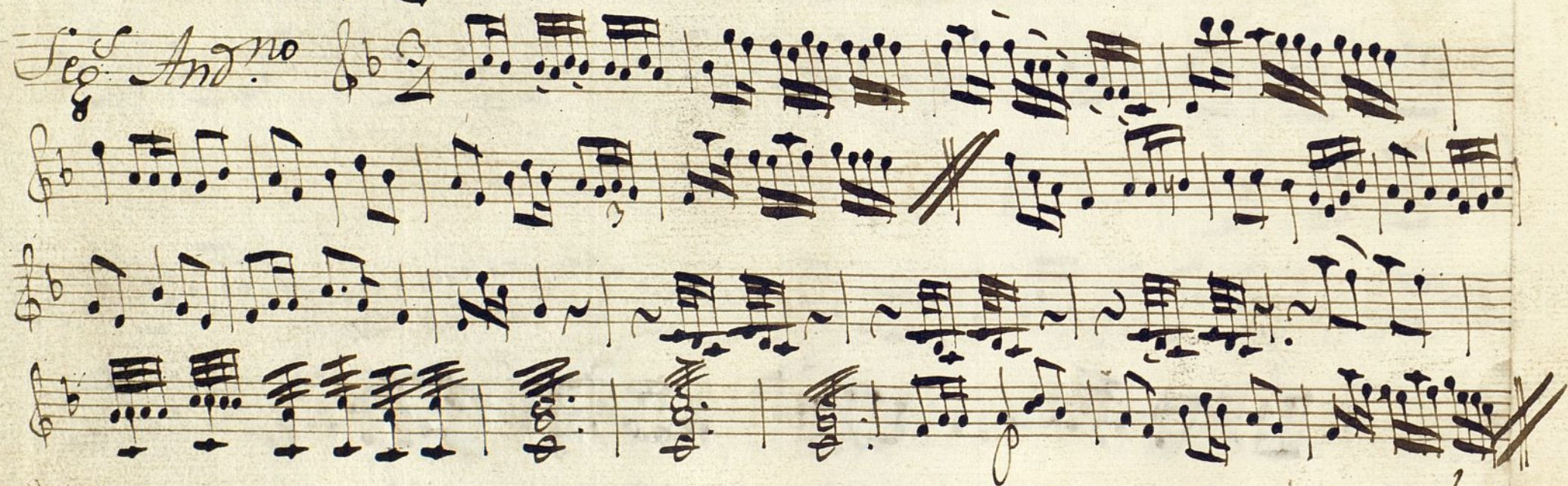


And.^{te} seg.

y sigue



no



*Allegro
do, mai*

+

flauta 2.^a

Ton.^a à duo

una Molinera, y

un Cazador.

Pastoral All. Handwritten musical score for 'Pastoral All.' in G major, 6/8 time. The score consists of ten staves. The first staff begins with a treble clef, a key signature of one sharp (F#), and a 6/8 time signature. The notation is in a cursive, handwritten style. The music features various rhythmic values including eighth and sixteenth notes, as well as rests. The piece concludes with a fermata on the final note of the tenth staff.

Handwritten musical score on ten staves. The notation includes various rhythmic values, accidentals, and dynamic markings. The first staff begins with a treble clef and a key signature of two flats. The second staff features a *Rezo* marking. The third staff is marked *Dep.* and includes a 3/4 time signature. The fourth staff is marked *All.* and includes a 2/4 time signature. The fifth staff features a 3/4 time signature. The sixth staff includes a 3/4 time signature. The seventh staff includes a 3/4 time signature. The eighth staff includes a 3/4 time signature. The ninth staff includes a 3/4 time signature. The tenth staff includes a 3/4 time signature.

Handwritten musical score on four staves. The notation includes various rhythmic values, accidentals, and dynamic markings. The first staff begins with a treble clef and a key signature of two flats. The second staff features a *Seq. And.* marking. The third staff includes a 3/4 time signature. The fourth staff includes a 3/4 time signature. The fifth staff includes a 3/4 time signature. The sixth staff includes a 3/4 time signature. The seventh staff includes a 3/4 time signature. The eighth staff includes a 3/4 time signature. The ninth staff includes a 3/4 time signature. The tenth staff includes a 3/4 time signature.

All.^o 
seg.^o And.^{no} 
al segno dos mas.

t

Trompa 1.^o

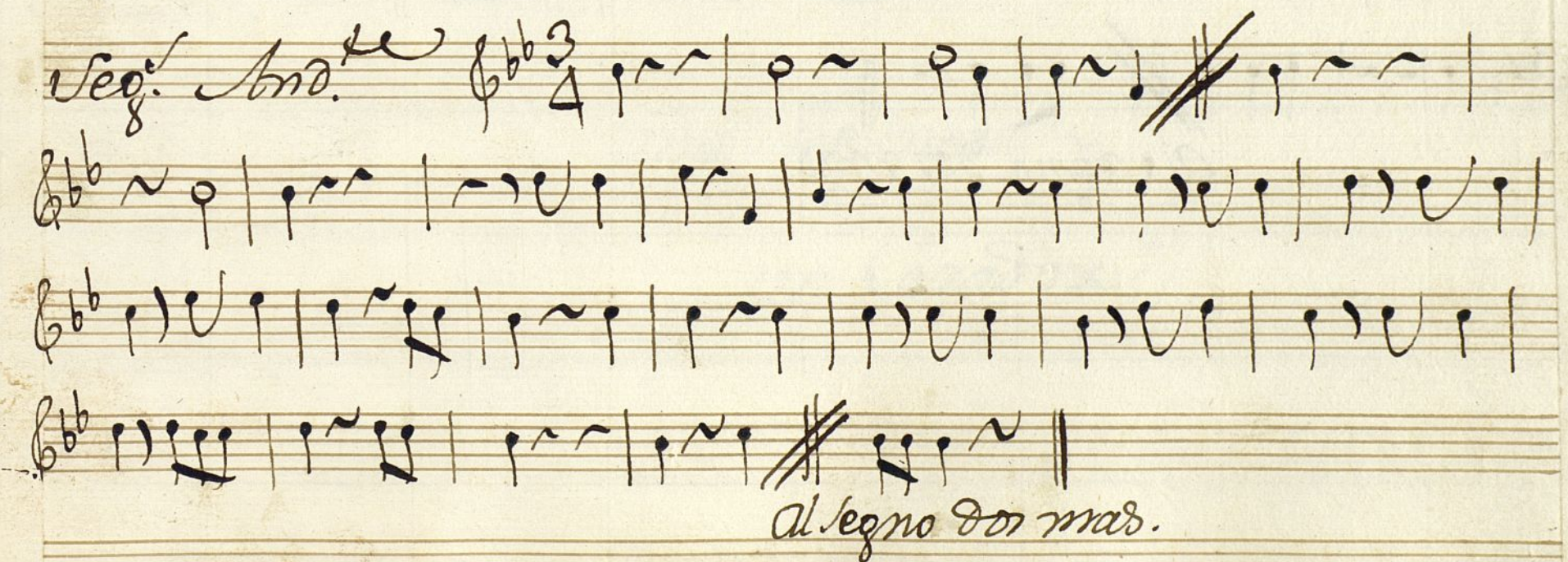
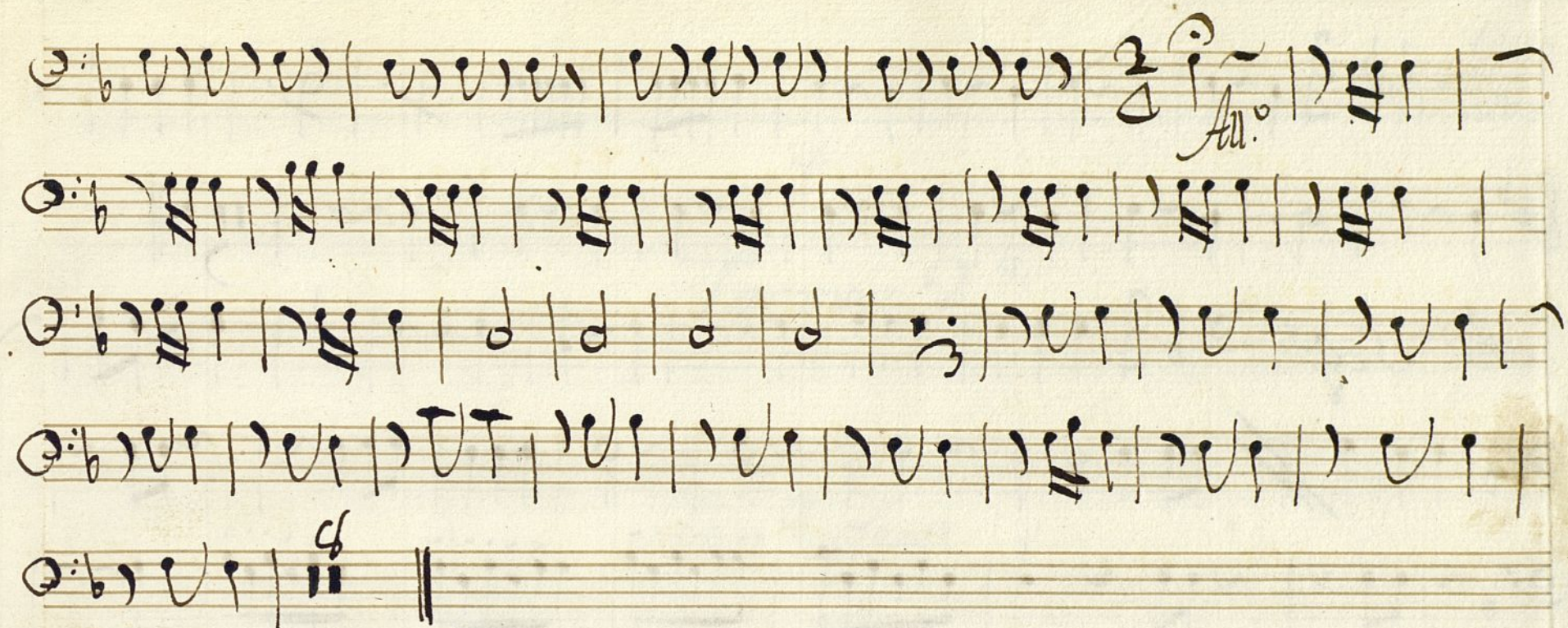
Ton.^a a duo

una Molinera

y un Cazador.

Pastoral All.º

A handwritten musical score on aged paper, consisting of ten staves. The title 'Pastoral All.º' is written in a cursive hand at the top left. The music is in 6/8 time, indicated by the '6' over the '8' and the common time signature 'C'. The key signature has one flat (B-flat). The notation includes various note values (quarter, eighth, and sixteenth notes), rests, and dynamic markings such as 'f' (forte) and 'p' (piano). The score concludes with a double bar line and the word 'And.' (Andante) written below the final staff.





Allegro dos mas.

+

Trompa 2.^a

ton.^o duo

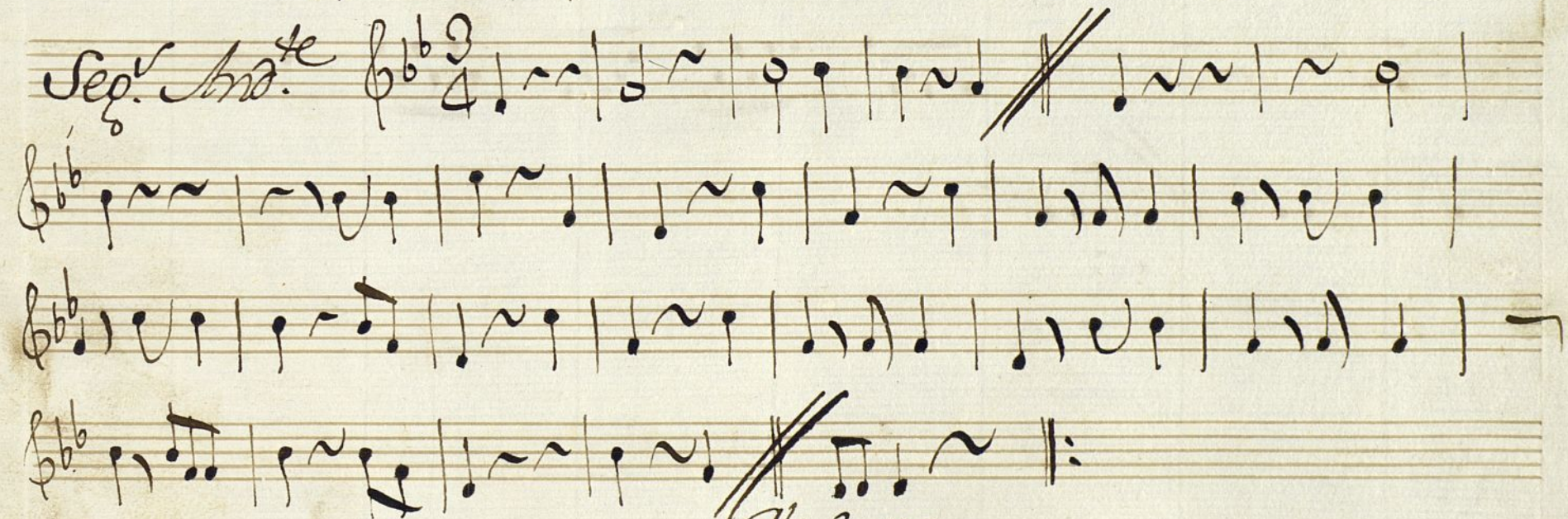
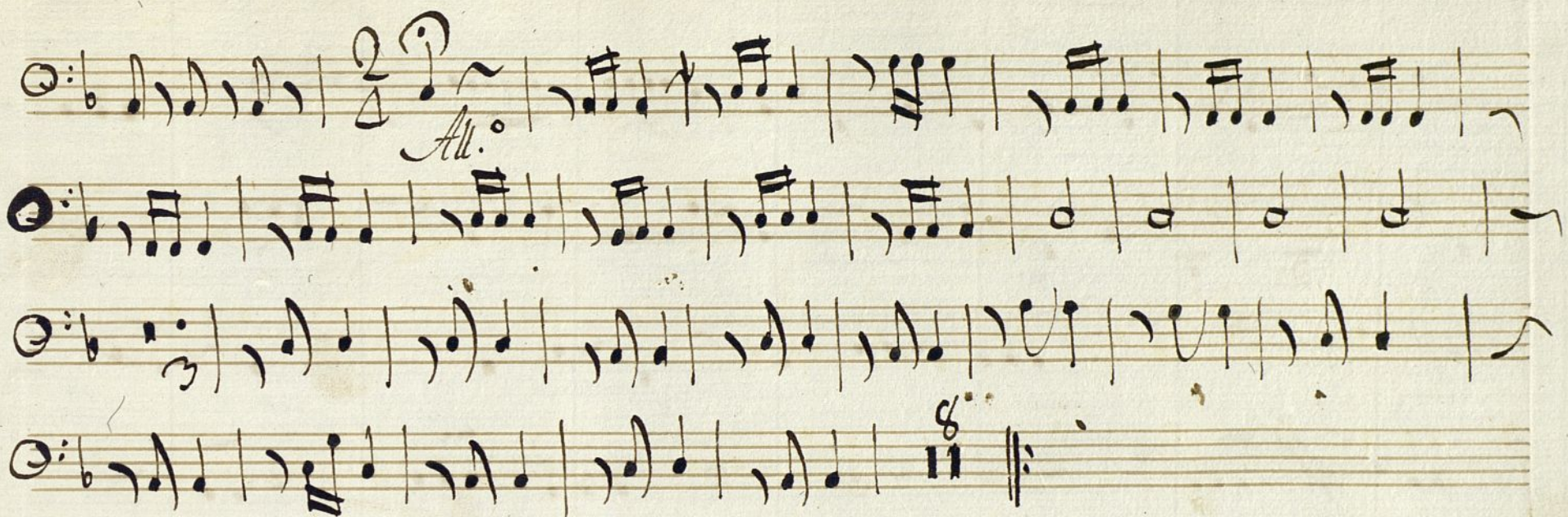
una Molinera, y
un Carador.

Pastoral All.^o

Handwritten musical score for a Pastoral in All. tempo. The score consists of 11 staves of music in G major (one sharp) and 6/8 time. The notation includes various musical symbols such as notes, rests, beams, and dynamic markings like 'p' (piano) and 'f' (forte). The first staff begins with the title 'Pastoral All.' and a key signature of one sharp (F#). The music is written in a cursive, handwritten style. The final staff ends with a double bar line and a repeat sign.

Rez.^{do}

Ayuntamiento de Madrid



*Allegro
dos mas.*

Segue:-



*Al Vêgno
dos mas.*

+

Contrabajo

Ten.^a a dúo

una Molinera

y un Cazador.

Pastoral All. A handwritten musical score on aged paper, consisting of ten staves. The title 'Pastoral All.' is written in a cursive hand at the top left. The music is in a single system, with each staff containing a different part. The notation includes various note values, rests, and bar lines. The paper shows signs of age, including discoloration and some staining. A watermark 'Ayuntamiento de Madrid' is visible at the bottom center, and the signature 'Rez. do' is at the bottom right.

Ayuntamiento de Madrid *Rez. do*

And.^{te} *All.^o*

Seq. And.^{te}

al segno una mas. *Vigue ÷*

