

Leg. 1.º n.º 31.

Mus 100-2

Leg. 2.º n.º 51

Two-2

Conadilla

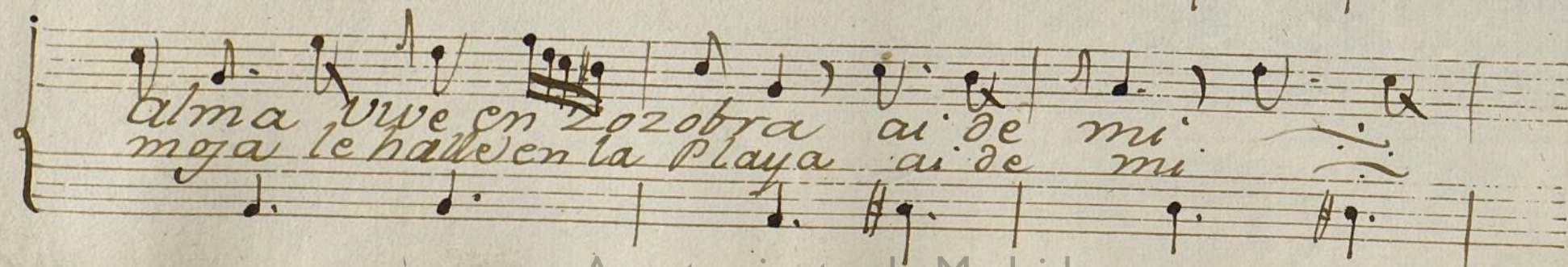
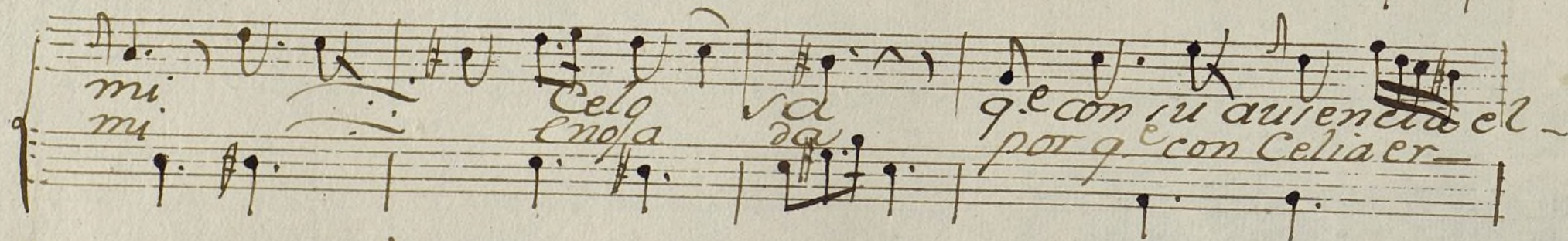
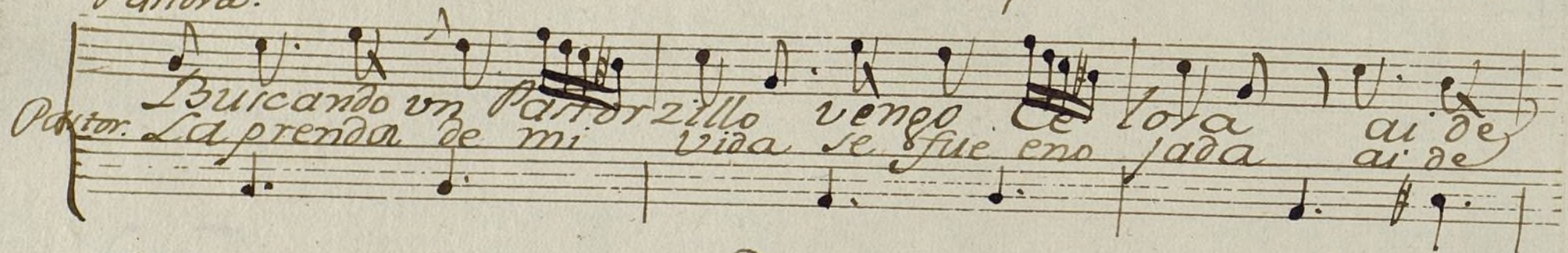
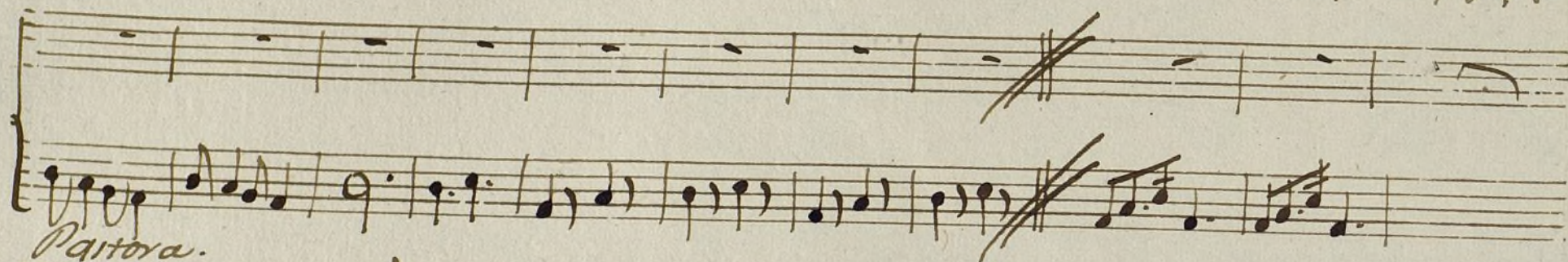
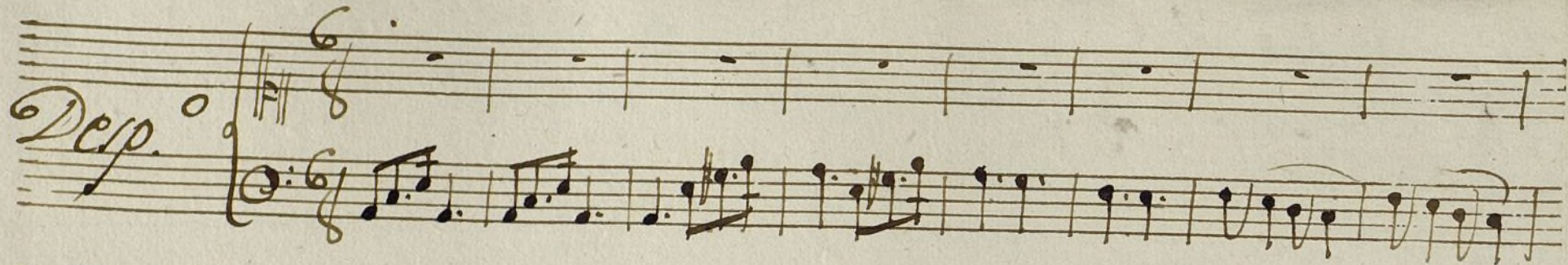
à Duo

La Pastora Celosa.

Con Viol.^o
Tromp.^o

51.

168.



en Zozo bra. con una ingrata
en la Playa mas con elagos

le ti inhumano partando fino tiernos alagos
u enojo fiero puei q. me ama templar preterendo

ai de mi fieros agravios---
la P. ai de mi Idmante dueño
q. ingrato

allegro.

Pastor
Alto Pastorzita dueño amado
Pastora
ingrato falso trai-

*Solo tu eres mi Prenda no as de mí -
dor y tu solo el burlador.*

*rarme no as de escucharme Pastor solo -
se tus engaños se tu traicion oyeme a*

tenta mi dulce prenda no te me eno les oye mi -

2. voz ai q. tormento ai Dios q. incendio es de los -

Celos la Cruel parion.

All.^o

Pastor.

*No balaba a -
dizome de
Sentados en -*

*zià la Playa y en ella a Ce lia encontrè
tus ofuclos me gusta la ermora tez
un remanso por la mano la pi lle*

Prepunto me Caru.
y lo te di se te
yalli la p.^a o infusta

mosa si lo te que ría bien
dise mas luego te lo diré
pena por dise q. etu cres mi bien

Pastora
Pues la inprata pues la fiera -
Calla ingrato Calla fiero
p.^a no te creo por te lo juro

*q.^{le} le importa tu querer q.^{le} le importa es-
 q.^{le} a de decir mas Infiel quiza Catta-
 y siempre te e de querer la 2. pue! Confirmer*

*te quisado y si ella no lo a de Comer-
 ria el labio y arraria la por dete en
 tiernos lazos tan Amable pade cer.*

*Pastor.
 eres fiero
 eres fiero
 (marbrito) y con esto*

pa *por* *pa*

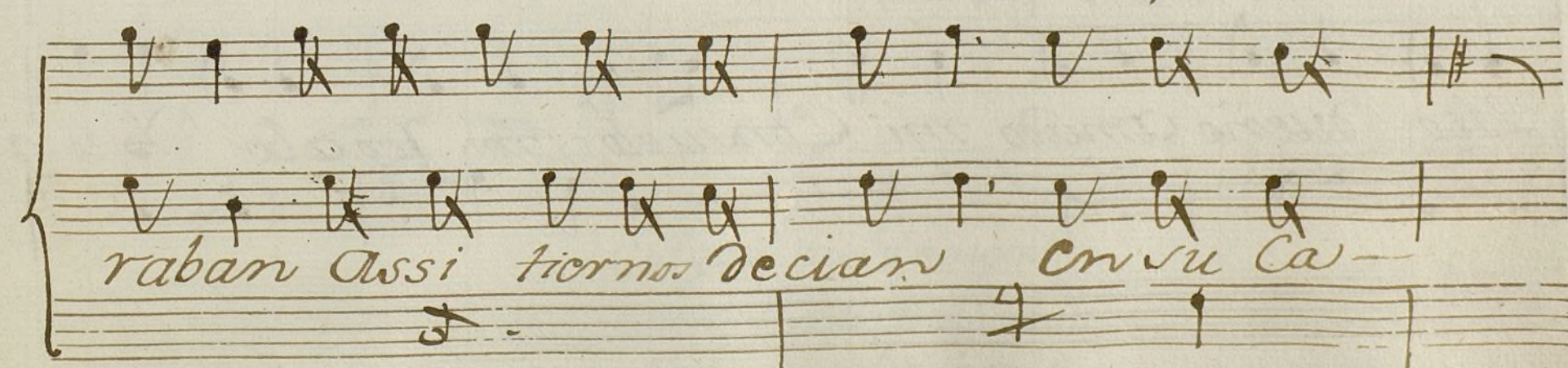
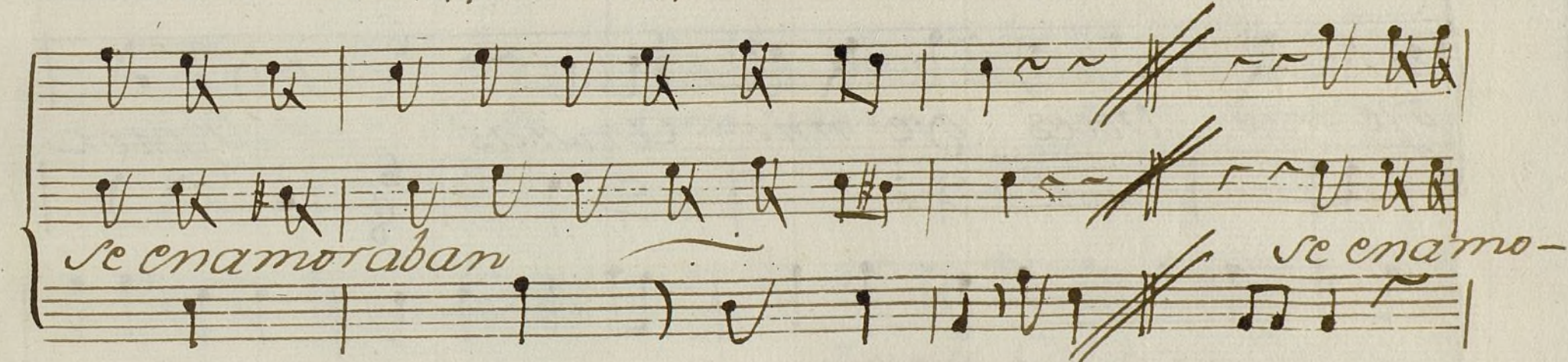
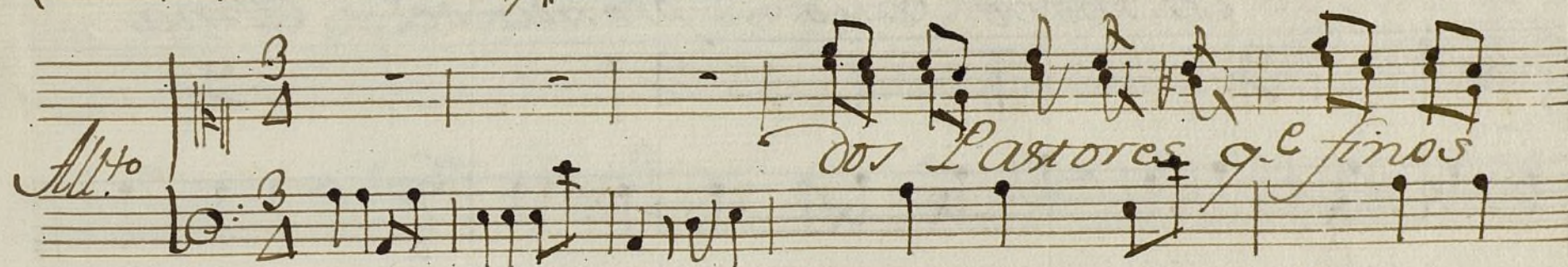
tu aleboso no seas necia ni tu Infiel

la tonada se acabado de esta vez

Lu 2

Que tormentos que pesares Cuesta a mi alma
para que las sepiudillas tengan su lu-

querer bien
gar tambien



bana ay mona mia
ai monio mio prenda del Alma

oye mis Voces oye mis Ansias
Pastor

Zito dueño Amado mi Consuelo, y mi Regalo
Yo te a-

Doro, y Do te quiero por ti mueroy Do te amo ai mi vida ai mi.

Cielo Do te adoro, y Do te amo avri tier nos de-

en su Cabana

cian

Aqui fin tenga
esta Pastorelita
Pulida y tierna.



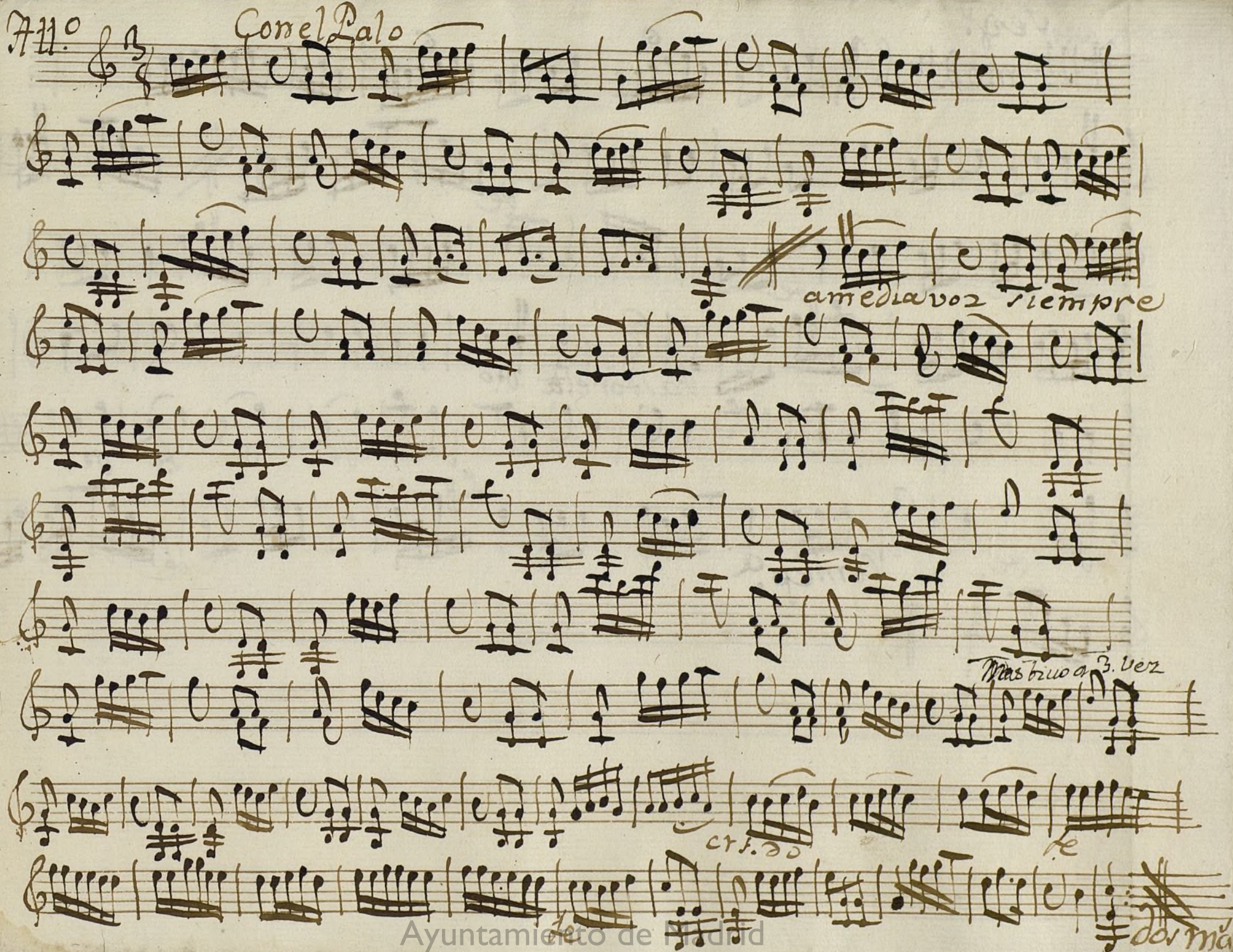
Un 1^o Ton.^a a Duo

La Pastora Zelosa ~

Handwritten musical score on aged paper, featuring ten staves of music. The notation includes treble clefs, a key signature of one sharp (F#), and a 3/4 time signature. The score is written in a cursive, handwritten style. The first staff begins with the tempo marking "D'esp.^o". The second staff includes the word "dol" (dolce) written below the notes. The third staff includes the word "poco" written below the notes. The fourth staff includes the word "poco" written below the notes. The fifth staff includes the word "poco" written below the notes. The sixth staff includes the word "poco" written below the notes. The seventh staff includes the word "poco" written below the notes. The eighth staff includes the word "poco" written below the notes. The ninth staff includes the word "poco" written below the notes. The tenth staff includes the word "poco" written below the notes. The score concludes with a double bar line.

711^o

Con el Palo



am e dia voz siempre

Mas briuo a 3. vez

cr. do

do r ma

Seq.^o
All^o mod.^{to} 3/4

6

Le o.o

Le Pastorela o.o

Le do

Le Comep.^a

alleg^{ro}

7

V. n 2.^o Ton.^a a Duo

la Pastora Celora

~~allegro~~
no

Dep.º 6/8

Handwritten musical score for a piece titled "Dep.º" in 6/8 time. The score consists of six staves. The first five staves are for a single melodic line, featuring various ornaments and slurs. The sixth staff is a separate line, possibly for a second voice or instrument, starting with a treble clef and a key signature of one sharp (F#). The notation is in brown ink on aged paper.

Handwritten musical score consisting of two staves. The top staff continues the melodic line from the previous section. The bottom staff is a new line, possibly for a second voice or instrument, starting with a treble clef and a key signature of one sharp (F#). The notation is in brown ink on aged paper.

Con el Ballo

Handwritten musical score for a piece titled "Con el Ballo" in 3/8 time. The score consists of two staves. The notation is in brown ink on aged paper.

Con media voz siempre

mai Viola 3. vez

Dorma

V. 1.

Seg! A Mo Mo do 6/4

6

6

6

La torat

se

3

Comera

se

Dormas

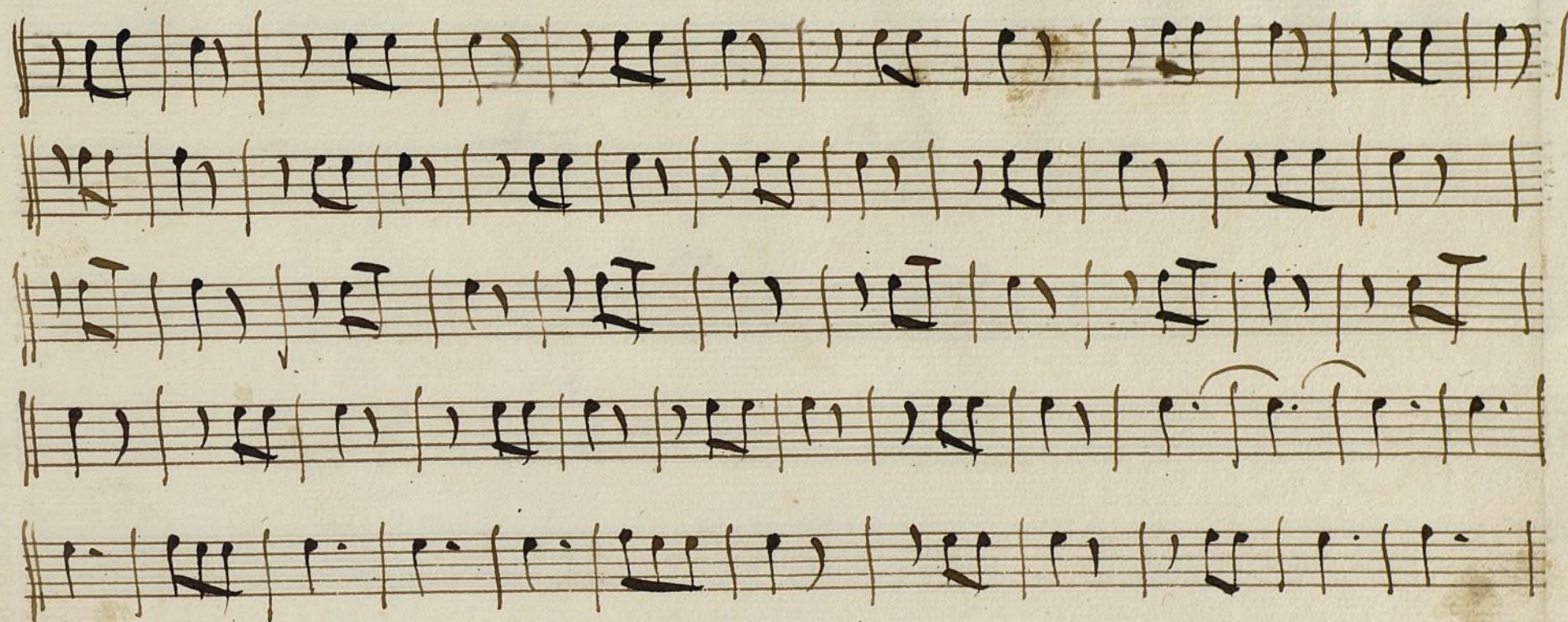
1^a Pa. Jonad^a

a Duo

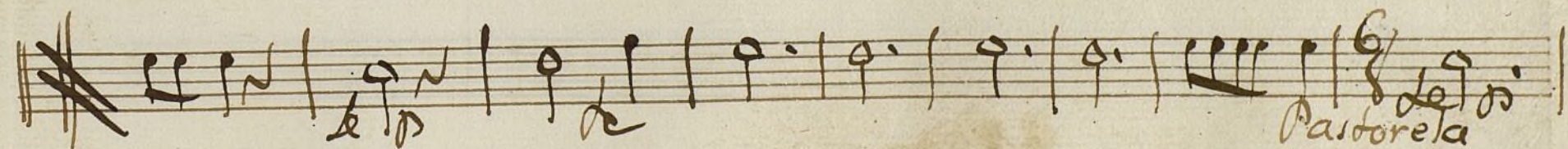
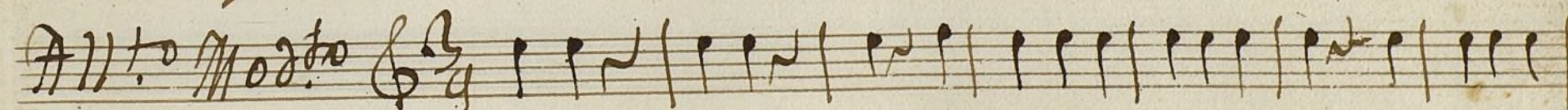
La Pastora Celosa

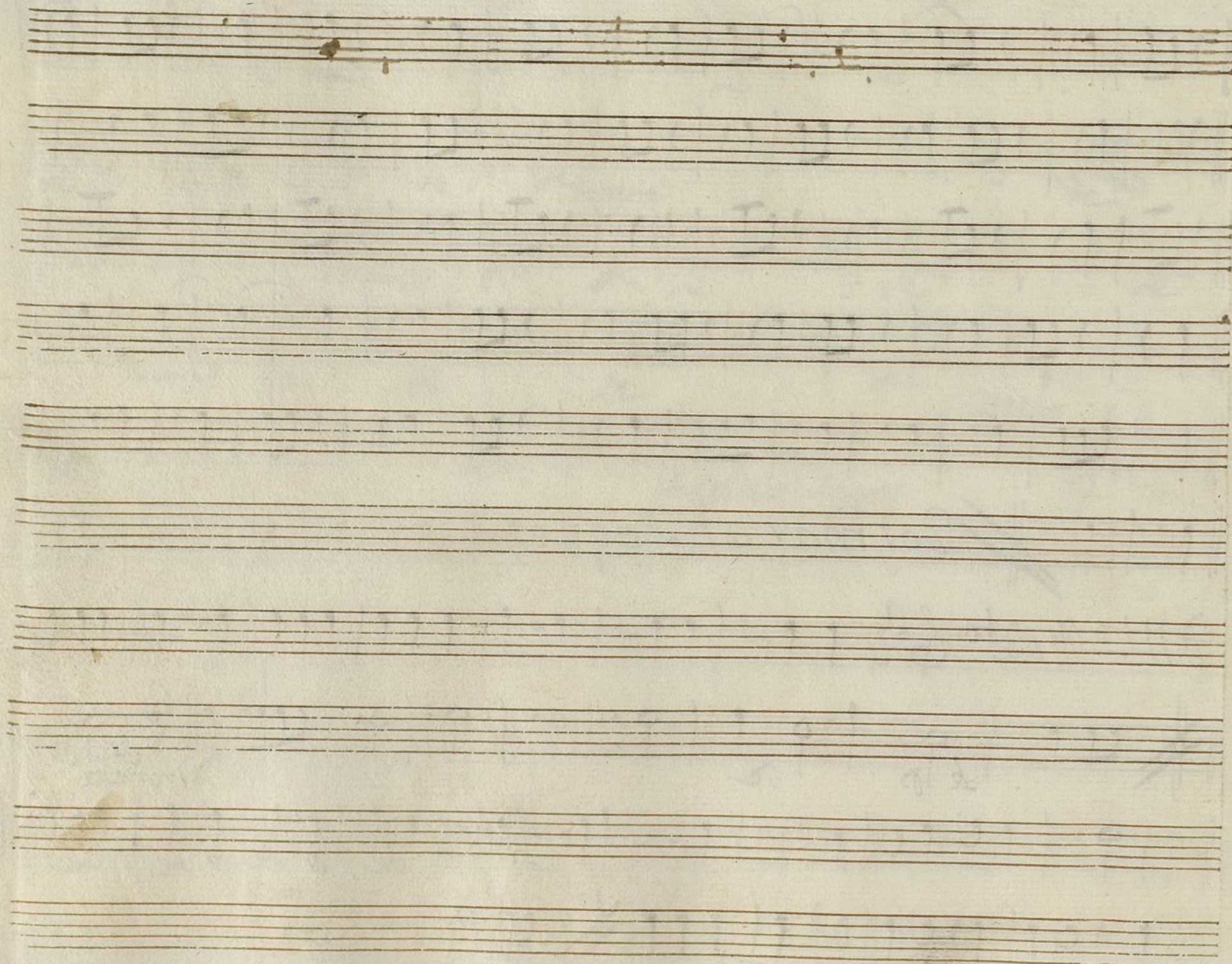
Handwritten musical score for a piece titled "Derp". The score is written on six staves. The first staff begins with a treble clef, a key signature of one flat (B-flat), and a 6/8 time signature. The notation includes various note values, rests, and dynamic markings. The second staff has the word "Le" written below the notes. The third staff has "poco de" written below the notes. The fourth staff has "poco de" written below the notes. The fifth staff has "de" written below the notes. The sixth staff has "de" written below the notes. The score concludes with a double bar line and the word "Fine" written above the staff. The number "12" is written below the staff at the end.

Handwritten musical score for "Ave María" by Antonio Vivaldi. The score is written on four staves. The first staff begins with a treble clef, a key signature of one flat (B-flat), and a 3/4 time signature. The notation includes various musical symbols such as notes, rests, and bar lines, characteristic of 18th-century manuscript notation. The text "Ave María" is written in a stylized, cursive script above the first staff. The score is set against a background of aged, yellowed paper.



~~||~~ *Dormar al Segno*





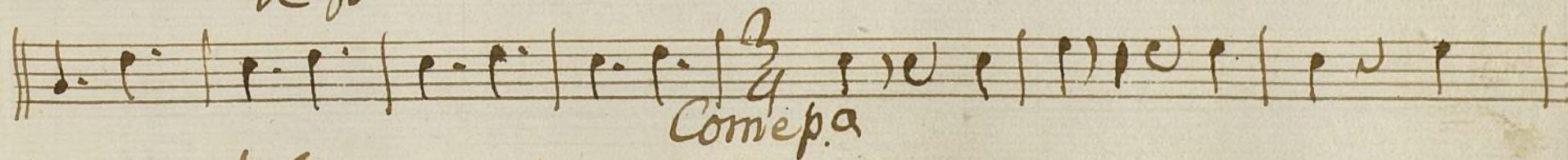
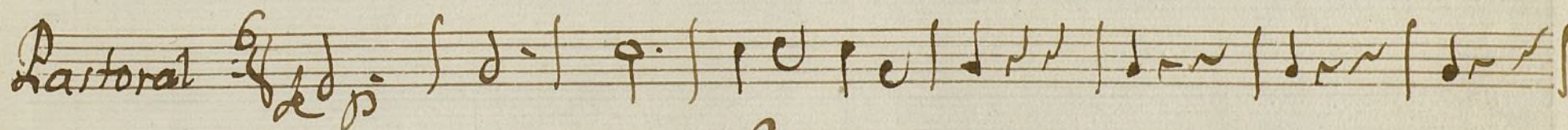
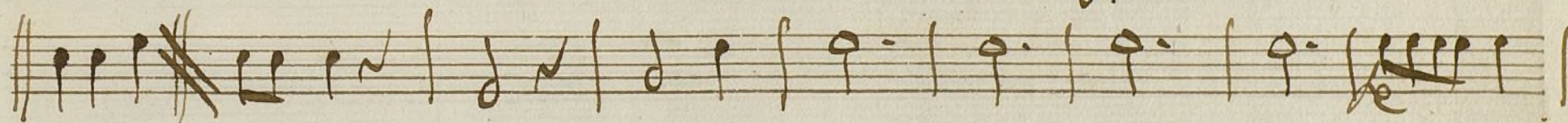
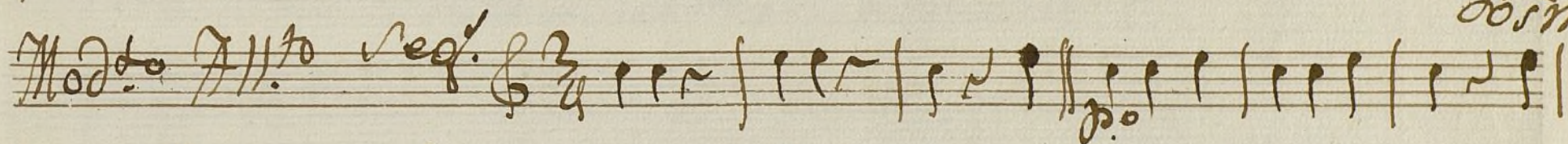
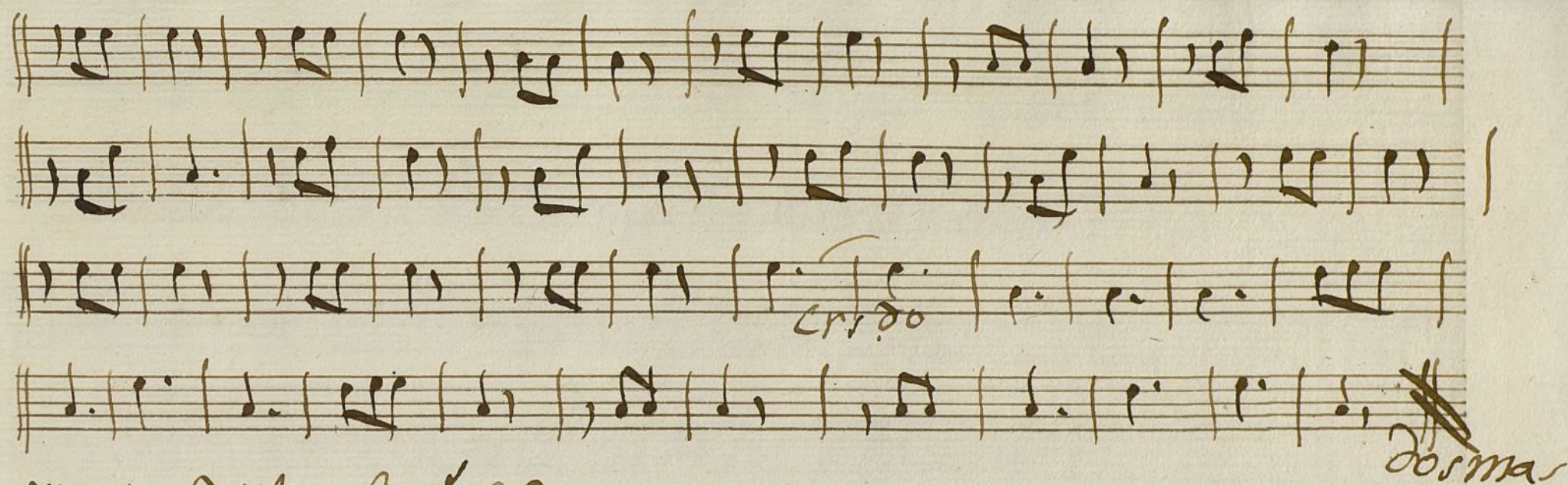
2

Trompa 2.^a Ton.^a

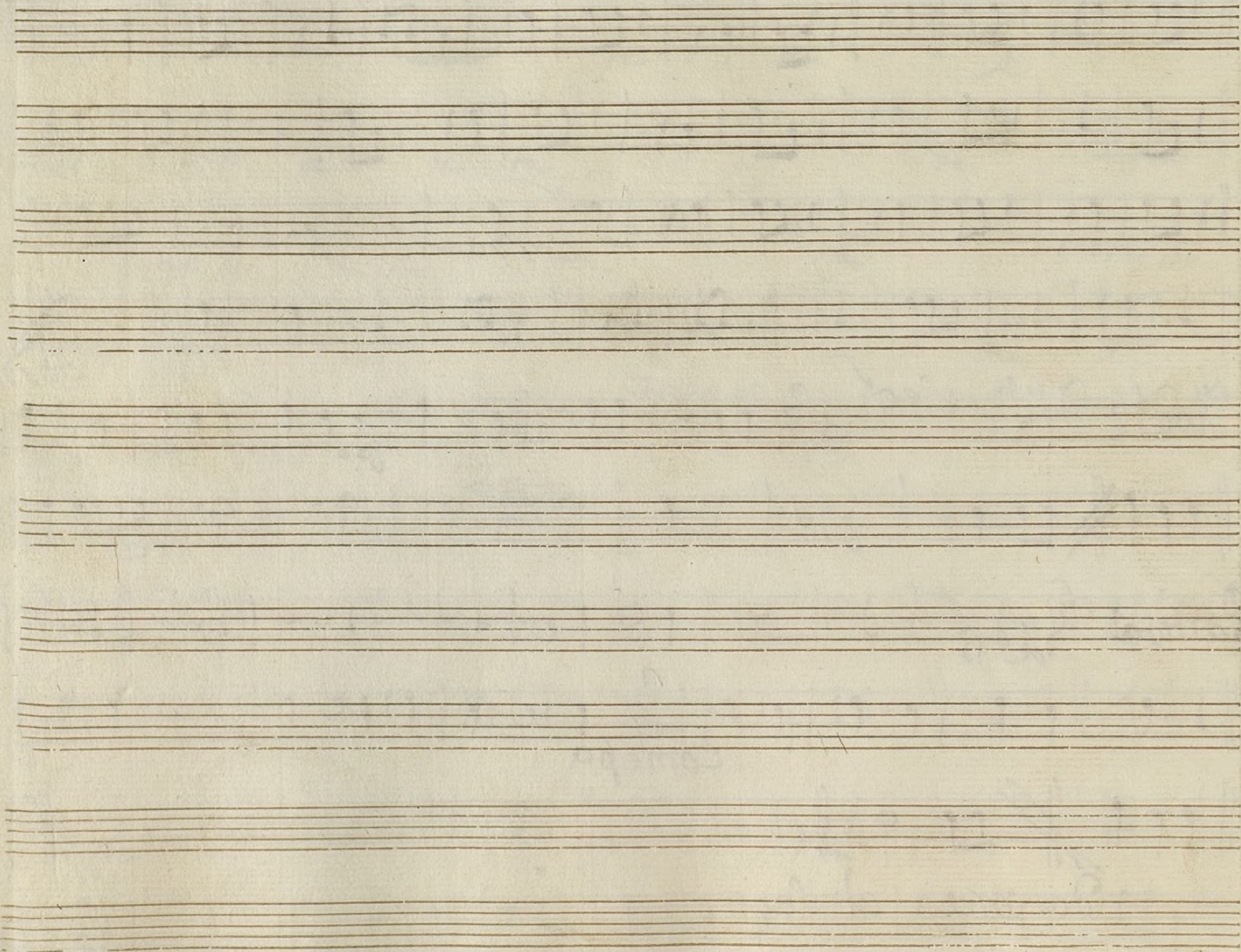
à Duo, de la

Pastora Celosa

Handwritten musical score on ten staves. The notation includes various musical symbols such as notes, rests, and clefs. The first staff begins with the tempo marking *Derp.* and a 6/8 time signature. The second staff includes the word *tenute*. The fifth staff features a section marked *Alto* with a 6/12 time signature. The eighth staff is marked *Allo* and begins with a 3/4 time signature. The notation is written in a historical style, likely from the 18th or 19th century.



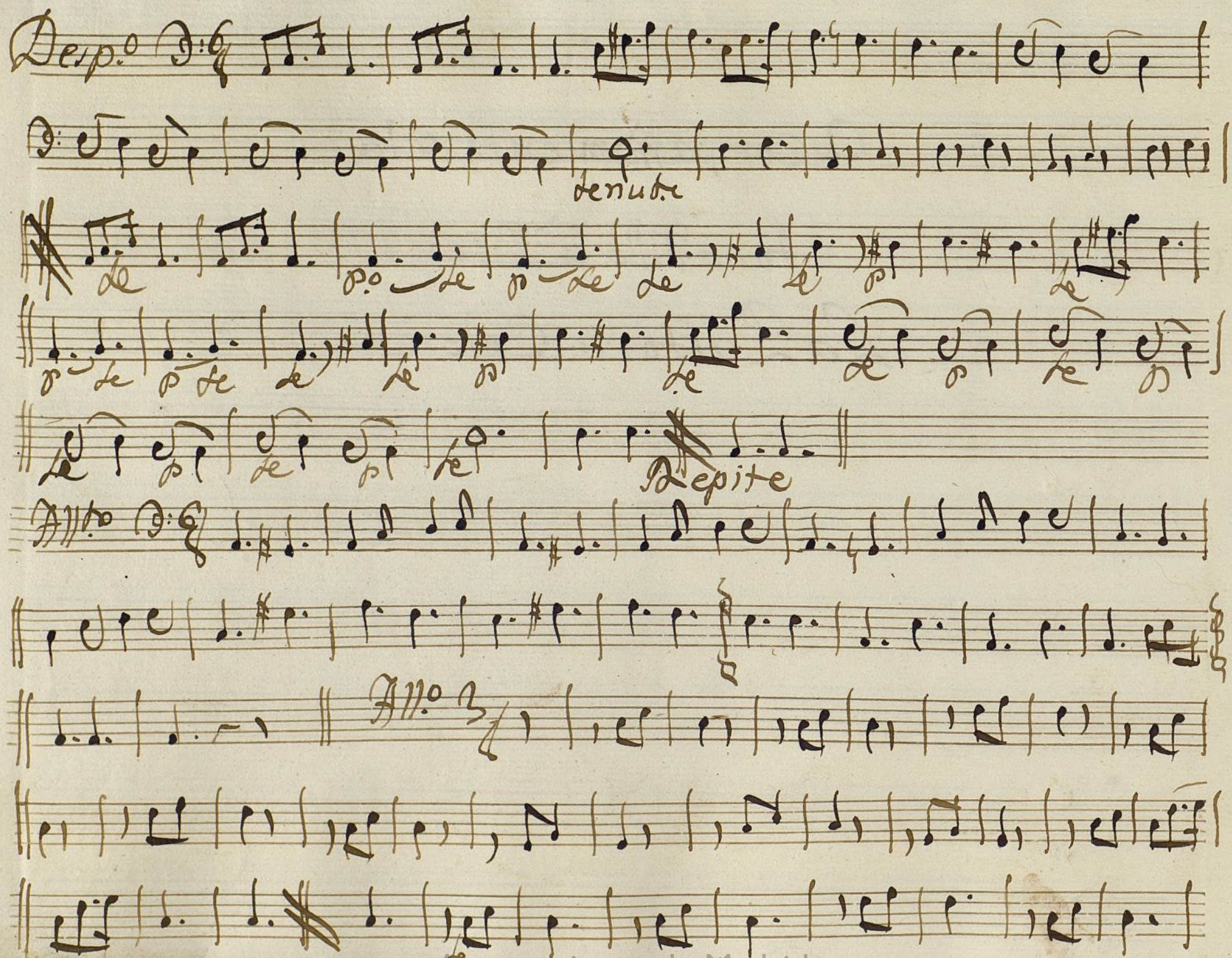
Dorma al segno



Ayuntamiento de Madrid.



A Compañamiento de la
tonadilla a Duo
La Lactora Celosa



Ayuntamiento de Madrid