

Seg.<sup>o</sup> T.<sup>o</sup> N.<sup>o</sup> 19.

Seg.<sup>o</sup> 2.<sup>o</sup> N.<sup>o</sup> 27.

Mus 99-16

— b —

Flautas y Chirimía

99-16

Conadilla

A Duo

27.

La Autora de la Segua.

1770 —



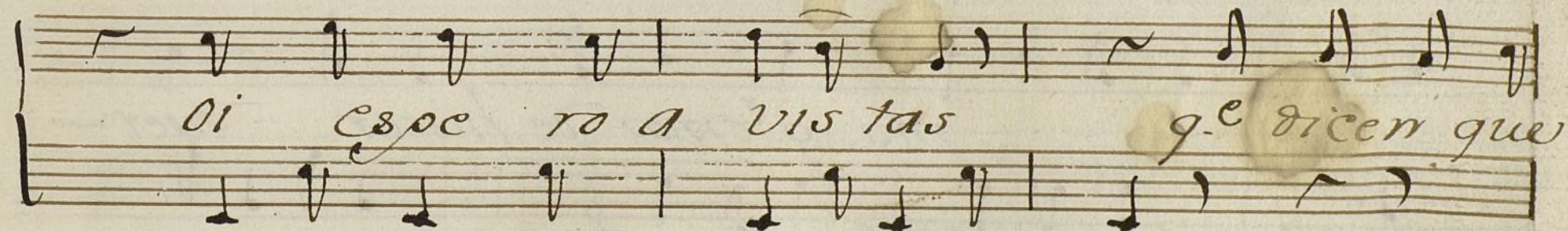
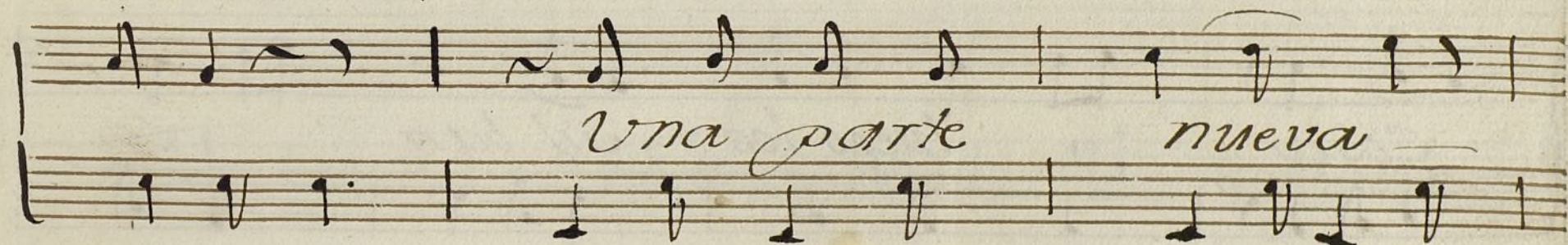
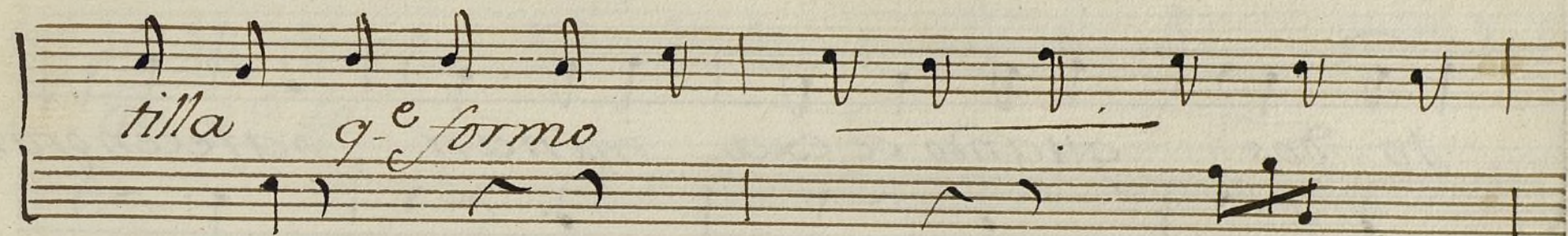
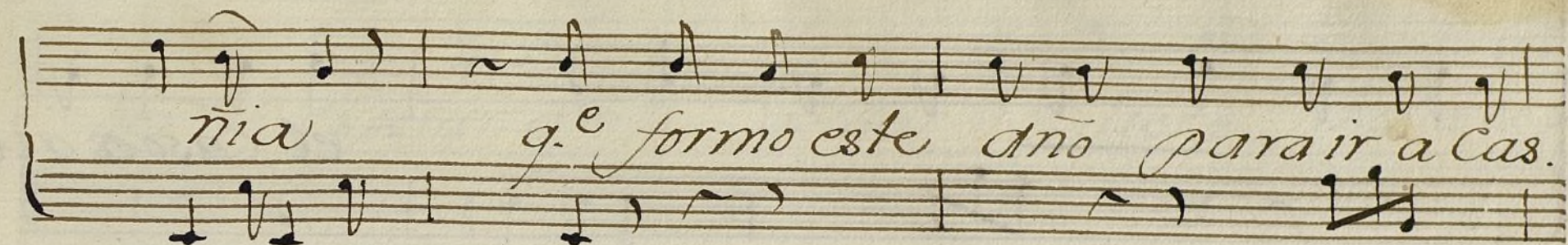
*All.*

Handwritten musical score for piano accompaniment. The score is written on ten staves. The first staff begins with a treble clef, a key signature of three sharps (F#, C#, G#), and a 6/8 time signature. The music consists of a series of chords and single notes, primarily in the right hand, with some left-hand accompaniment. The notation is in a historical style, with some ligatures and slurs.

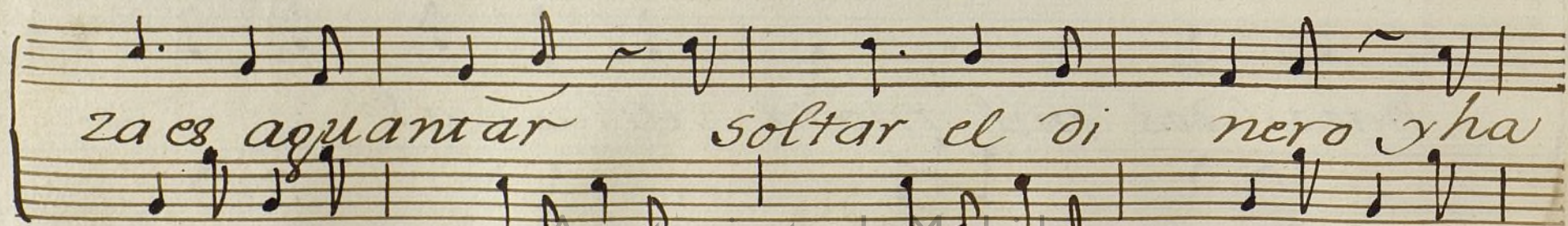
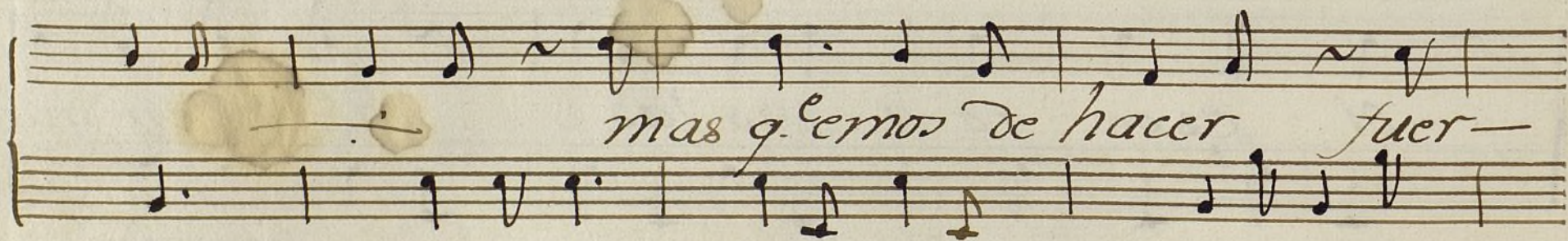
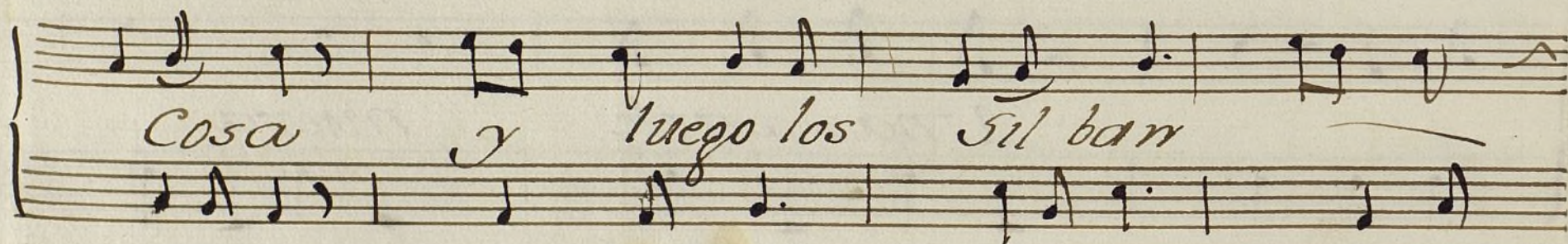
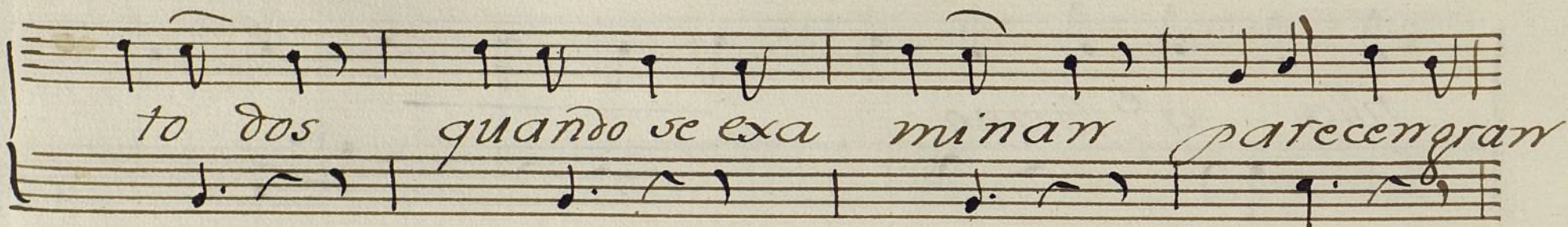
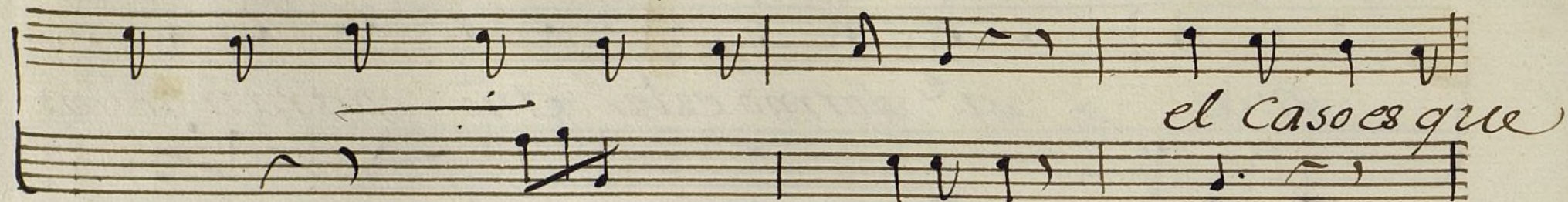
*Autora*

*So soi una Autora de una Compa-*

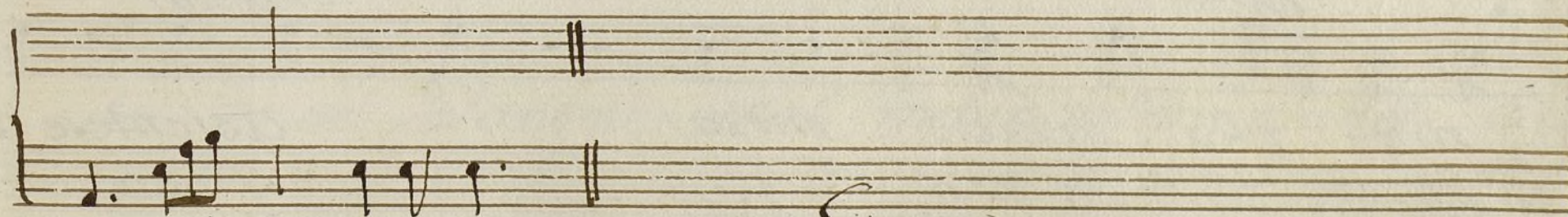
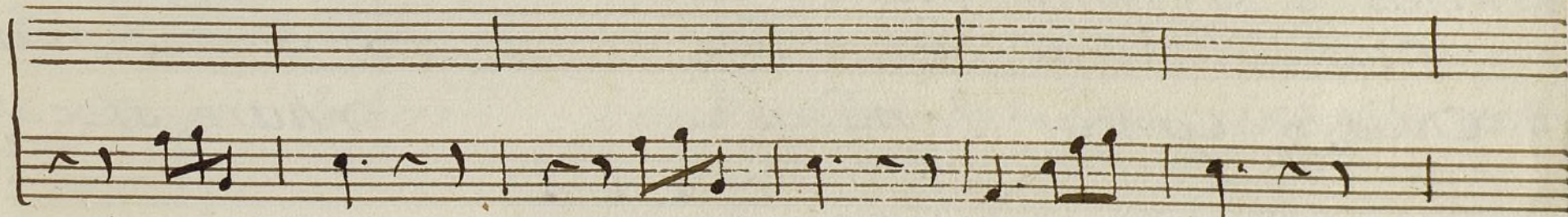
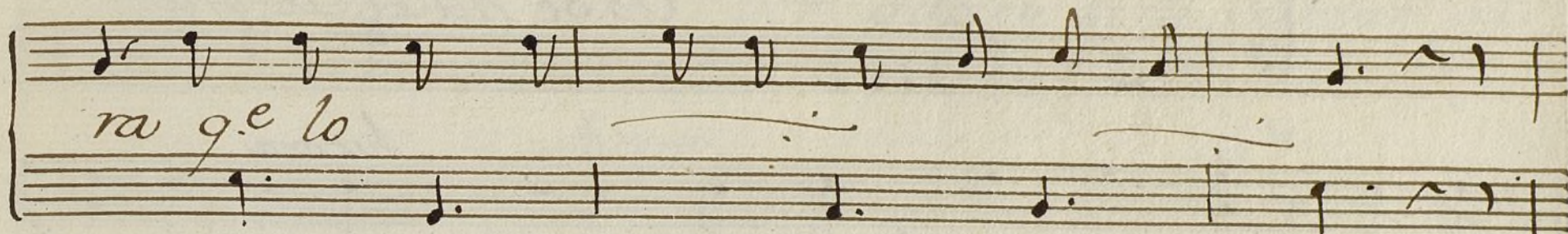
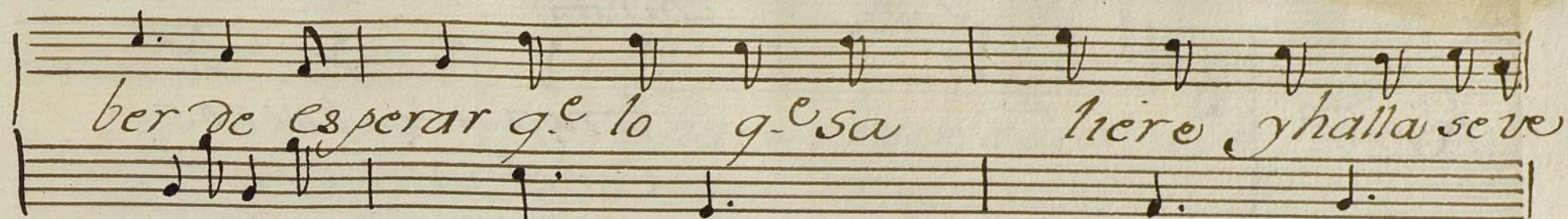












*Segue*



Rez. do

chinita

tenga uste buenos  
Conq. uste Compa  
Yo se hacer de gra

dias Señora Au tora  
nia Heba a Cas tilla

Au tora

sea uste mu bien ve  
si Señor y mu

Cioso, Cantar tonadas

y harè si se ofre

ch ta

nido Ro lliza moza  
guapa Dioj la ven diga  
ciere tambien las Damas.

Au tora

asientere us  
quiere uste ve  
g. n a visto



*ch<sup>ta</sup>* *Autora* *ch<sup>ta</sup>*

te no no no lo harè pues vaia ala par a-  
 nir muu contento Yrè sabe uste cantar y  
 tal lo quiere usted ver quiero oirle cantar al

*Autora* *ch<sup>ta</sup>*

si estoi muu bien quiere uste almorzar se lo estimo a us-  
 Xabiar tambien sabe uste vailar todo lo se tra  
 punto lo harè vaia pues a lon atienda uste

*Au<sup>ra</sup>* *ch<sup>ta</sup>*

te no se planta mal mejor q. en clavel a-  
 cer pues no ai q. dudar pues ya no ai q. hacer  
 pues silencio atencion chuscos atender a-  
 a-  
 a-



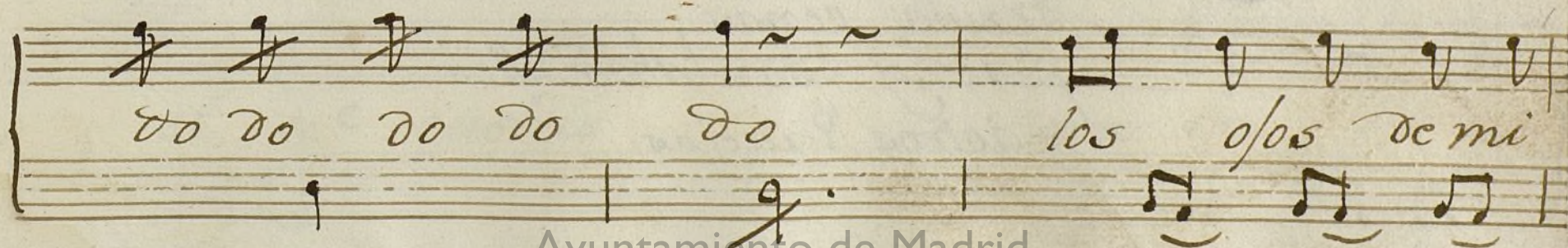
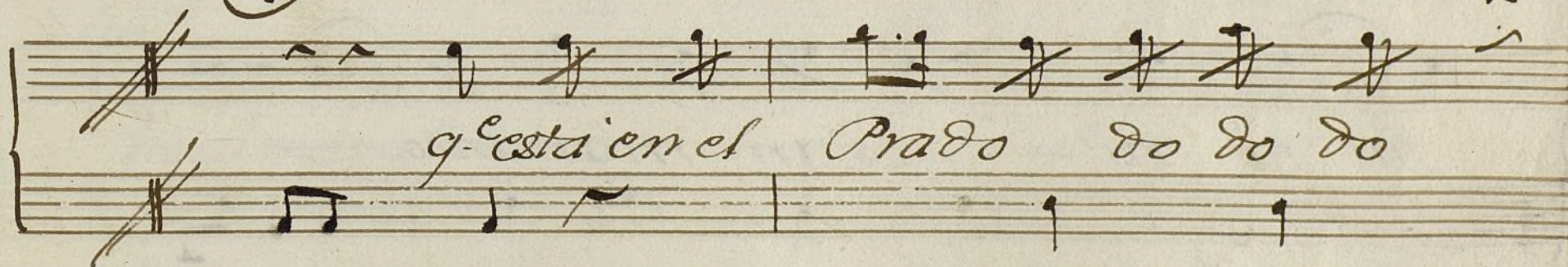
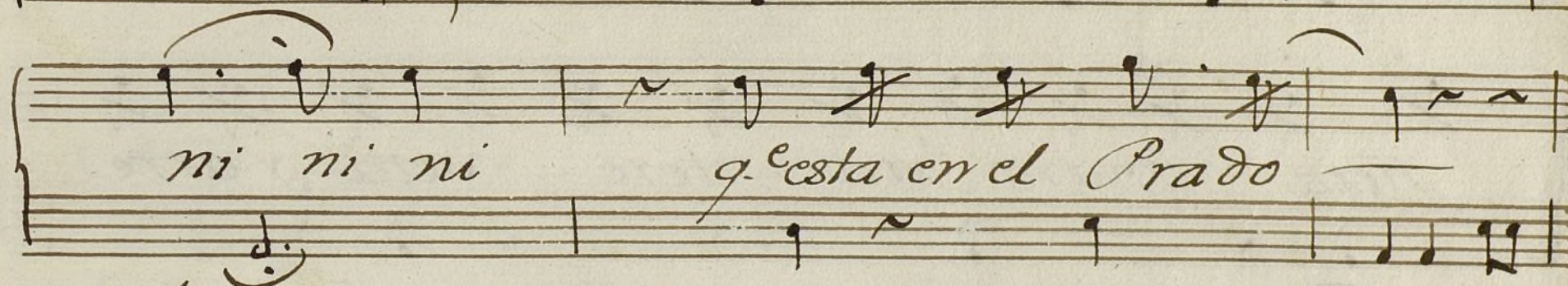
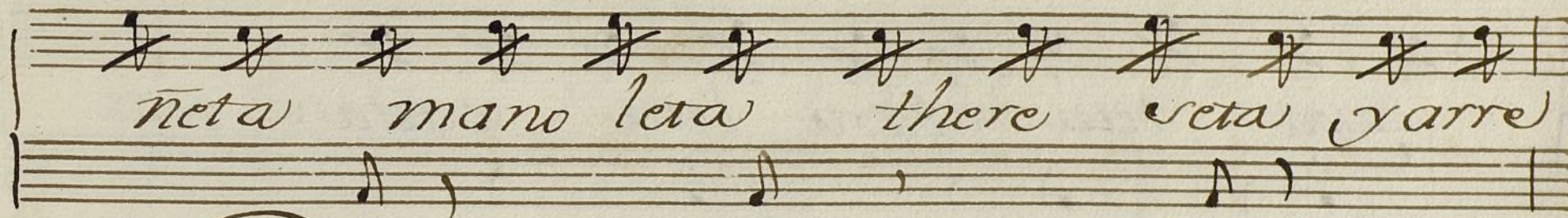
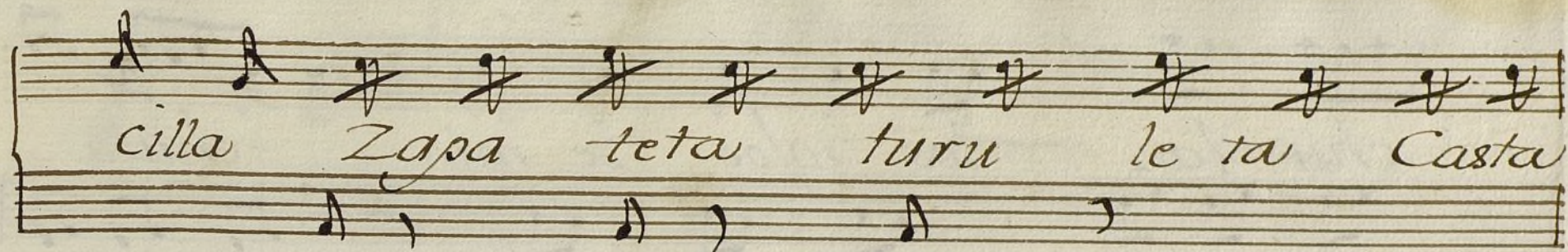
tiendan a tiendan q. el Caso es de ver atiendan a

tiendan a tiendan q. el Caso es de ver atiendan a

tiendan a tiendan q. el Caso es de ver atiendan a

Coco co como la fue fue fue fue fue fuente







chus la, los ojos de mi chula

Zapa teta turu leta Casta-

neta mano leta tere seta y arre

ni ni ni- estan mamando

Axiua penas  
q' avnojan tabardillos  
y aotros Vixuelas



All.<sup>o</sup>

Aurora

e bravo bravo

mui bien mui bien lo hace uste cierto

ch<sup>ta</sup>

tódo ala Ley quedo admi<sup>o</sup> tido

Aur<sup>a</sup>

ch<sup>ta</sup>

no aimas q<sup>e</sup> hacer con q<sup>e</sup> partido

Aur<sup>a</sup>

el q<sup>e</sup> queteis y agora se nores



The image shows a handwritten musical score on aged paper. It consists of three systems of staves. Each system has a vocal line (treble clef), a guitar line (treble clef), and a bass line (bass clef). The lyrics are written in a cursive hand below the vocal line. The first system contains the lyrics "a vuestros pies os supli camos". The second system contains "q.e perdo neis si la to nada". The third system contains "si la to nada si la to nada". The music is written in a simple, functional style typical of 18th or 19th-century manuscript notation.

a vuestros pies os supli camos

q.e perdo neis si la to nada

si la to nada si la to nada



no es de pla cer si la to nada

no es de pla cer.



99.16

Ayuntamiento de Madrid



Violin 1.ª Ton.ª a Duo la Aurora de la Legua

Musical score for Violin 1.ª, Ton.ª a Duo, la Aurora de la Legua. The score is written on ten staves. The first staff begins with a treble clef, a key signature of two sharps (F# and C#), and a 6/8 time signature. The notation includes various musical symbols such as notes, rests, beams, and dynamic markings like 'f' (forte) and 'p' (piano). The score is written in a cursive, handwritten style.

99.16



*Rez.<sup>do</sup>*

*Allegro*

*Allo no mucho.*

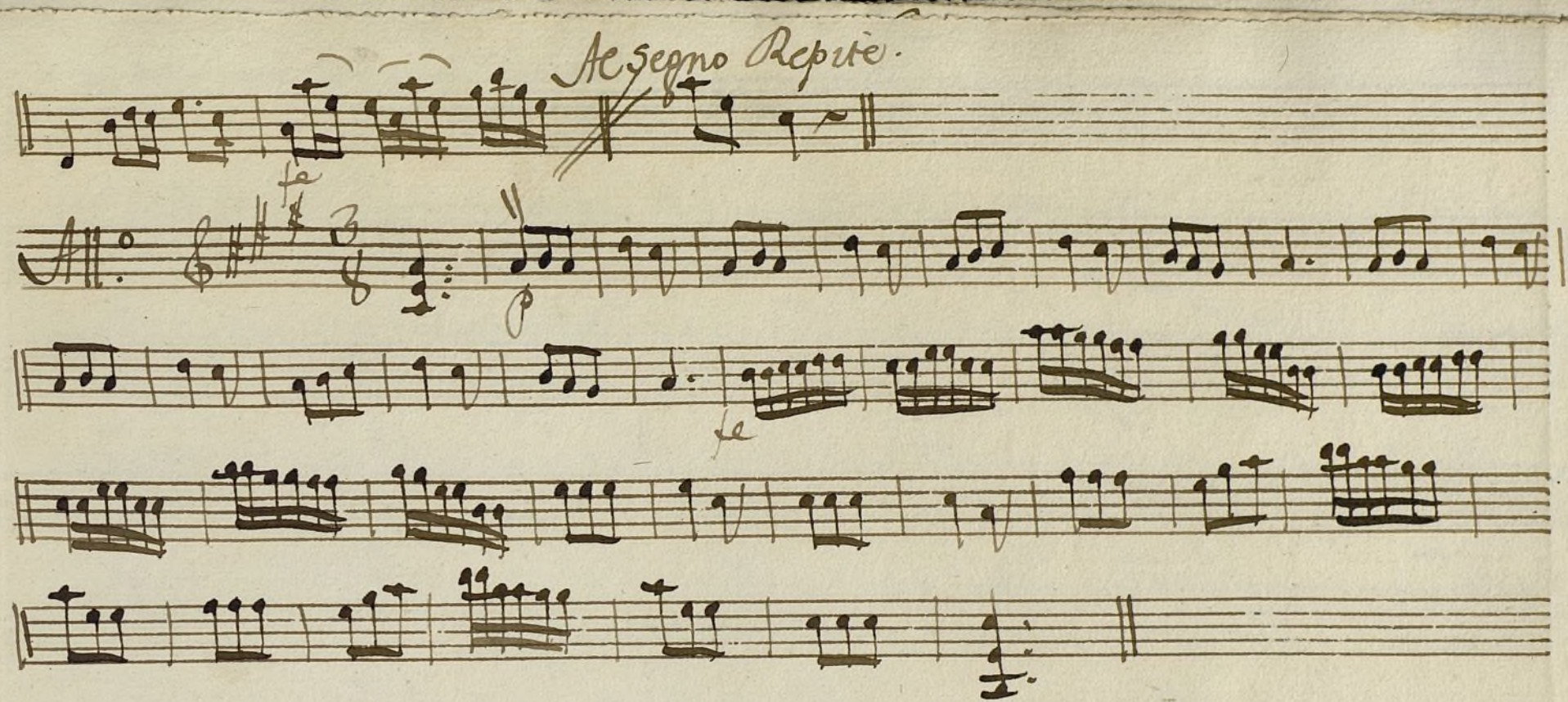
*Allegro dos mas.*

*fe*

*fe*

Ayuntamiento de Madrid





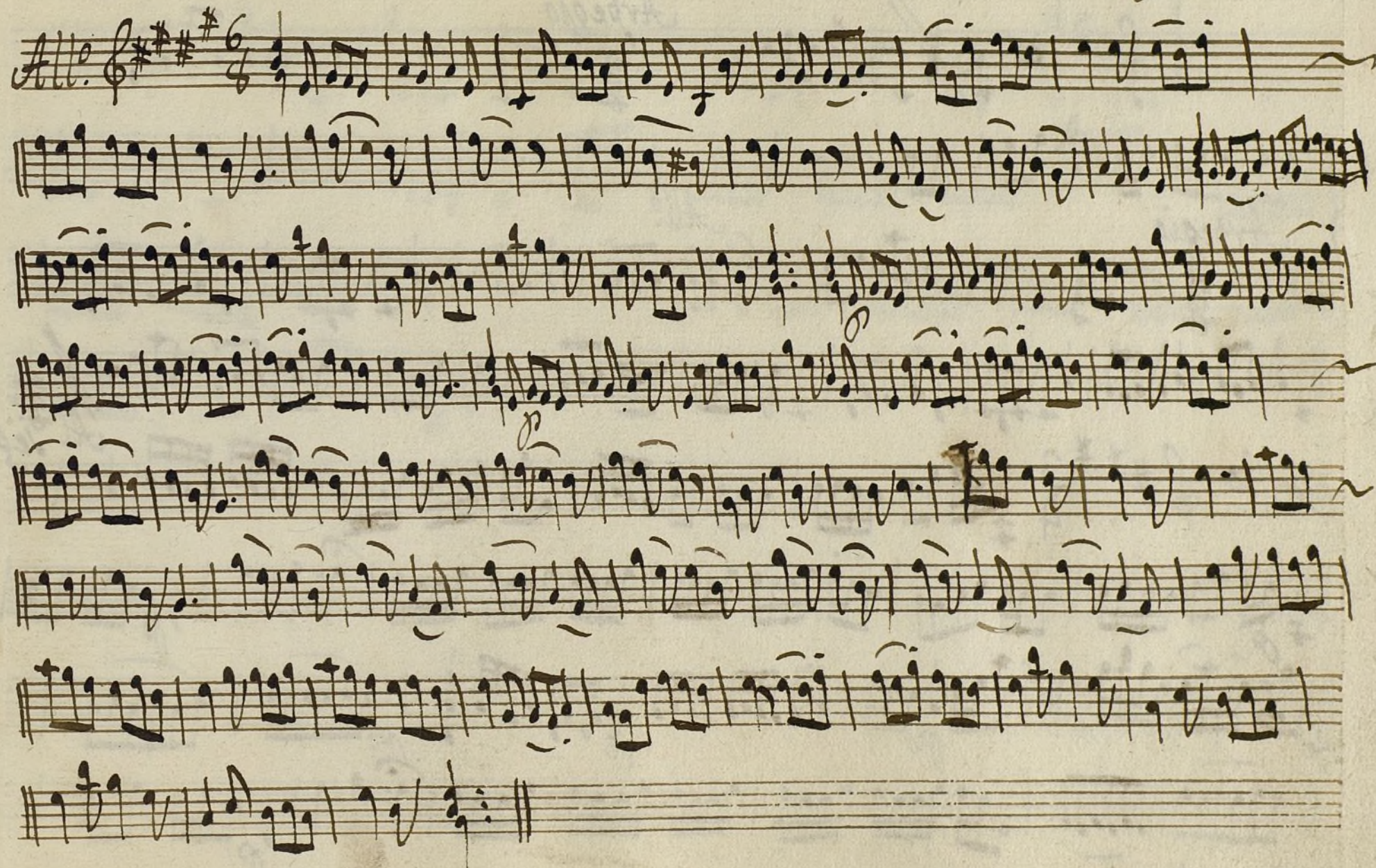


Ayuntamiento de Madrid



Violín 2.<sup>o</sup> Ton.<sup>a</sup> a Duo. la Autora de la Legua.

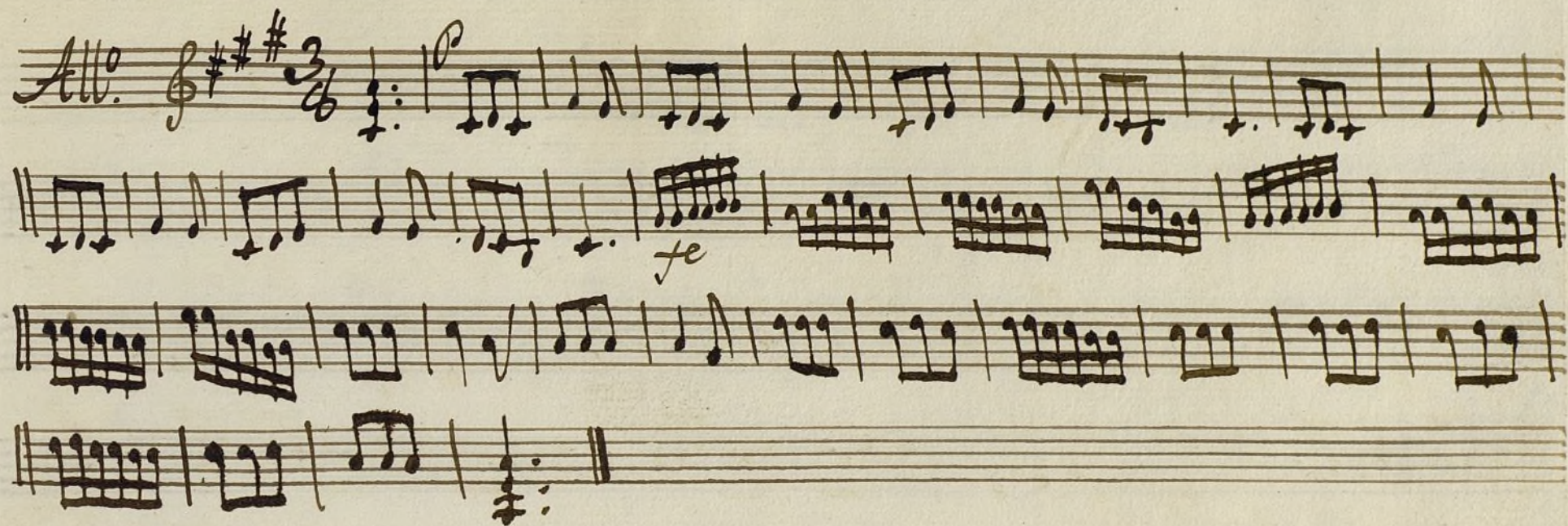
Mus 99-16





Handwritten musical score for a piece titled "Allegro". The score is written on ten staves. It begins with a treble clef, a key signature of three sharps (F#, C#, G#), and a common time signature (C). The tempo is marked "Allegro". The music features various rhythmic patterns, including eighth and sixteenth notes, and rests. There are several dynamic markings, including "p" (piano) and "f" (forte). The score concludes with a double bar line and a fermata. The text "Ayuntamiento de Madrid" is written at the bottom right.





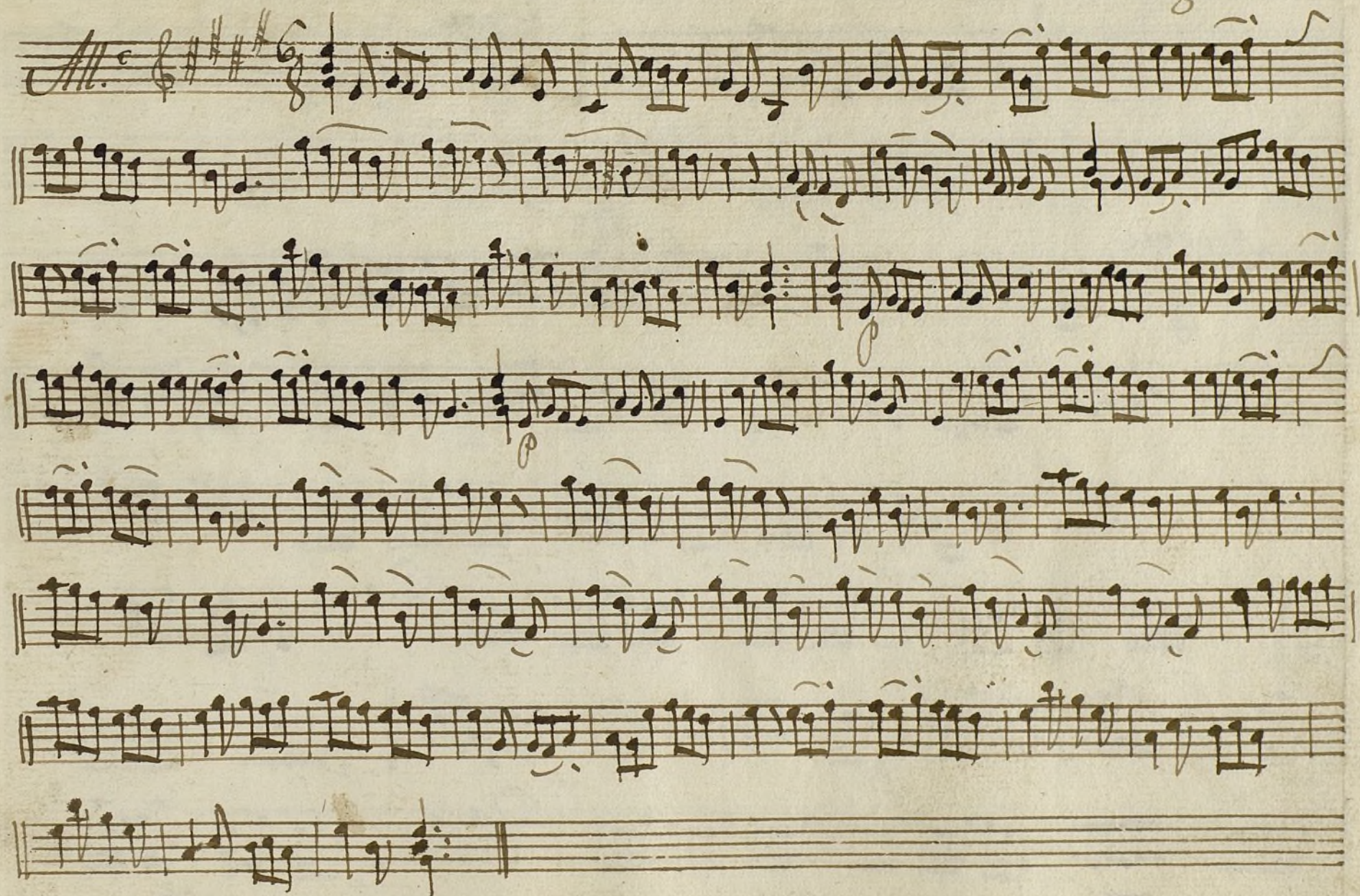
Dot  
ray-



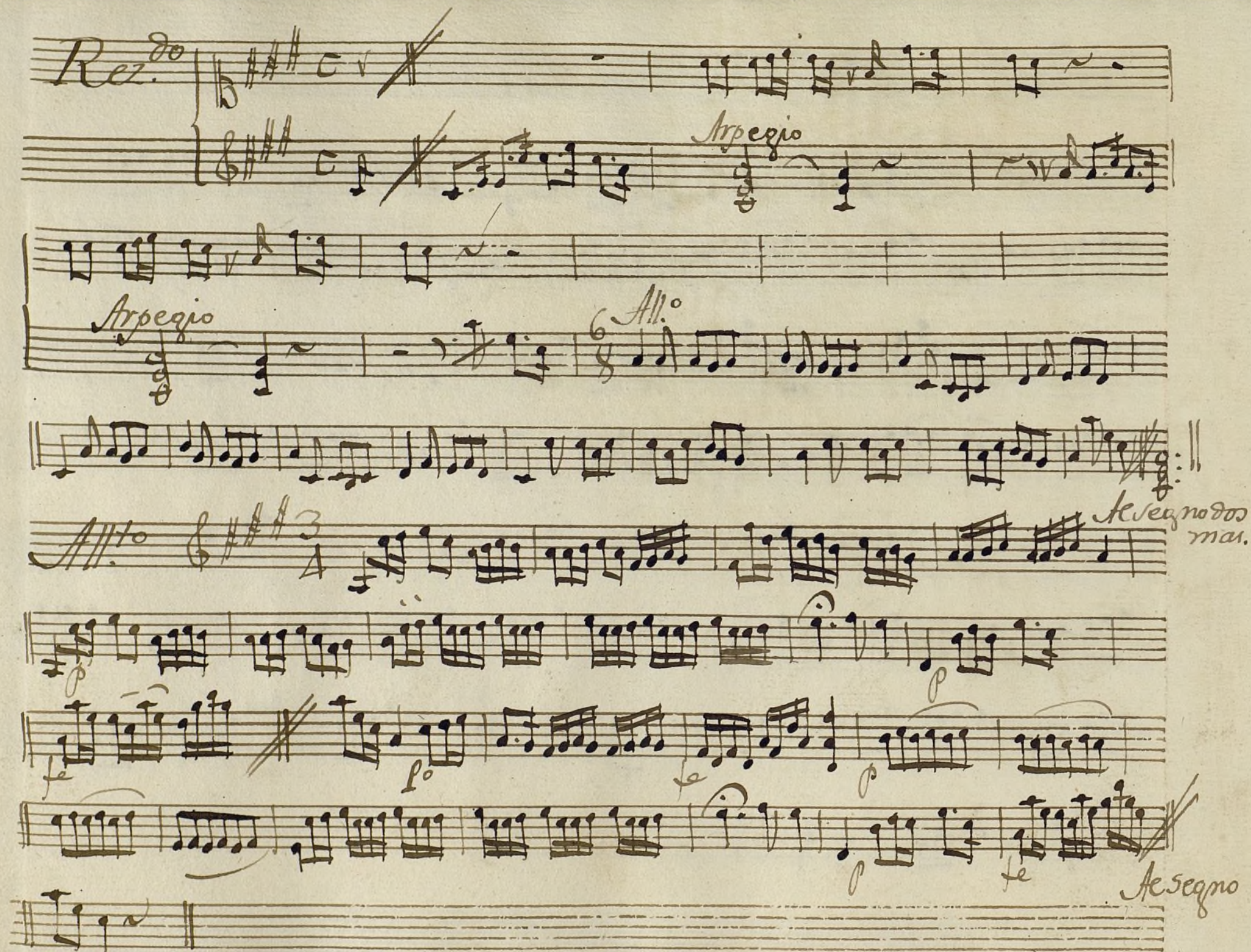
Ayuntamiento de Madrid



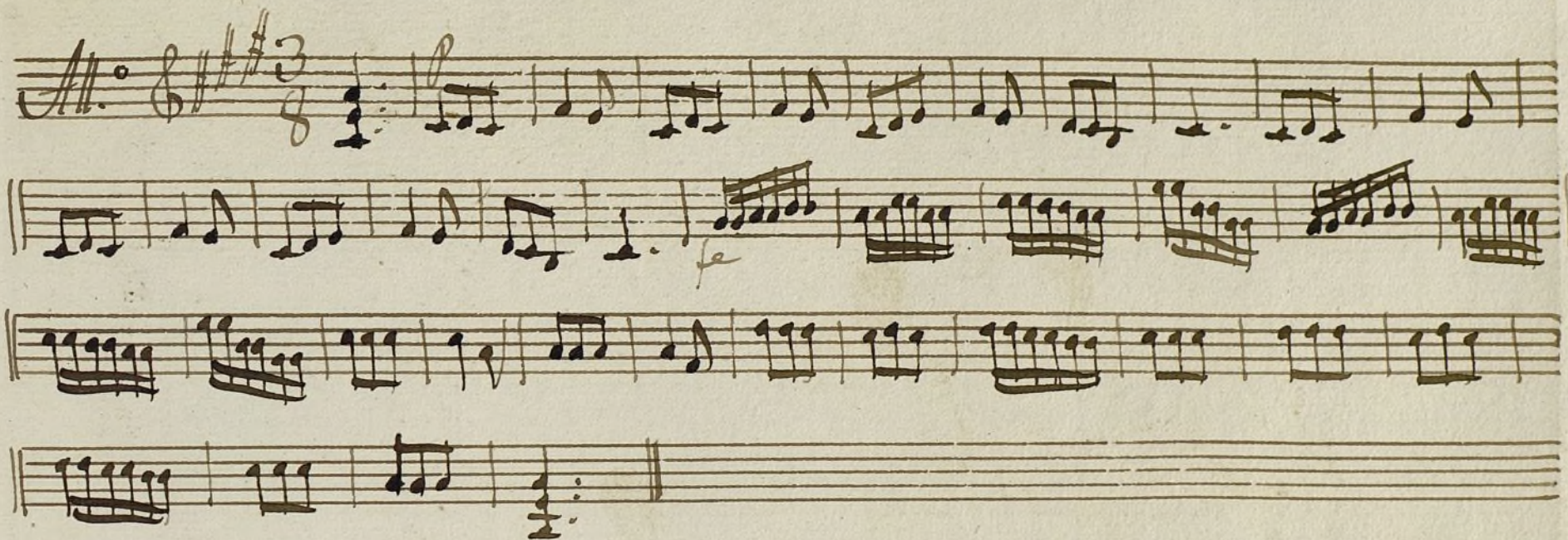
*Violin 2.<sup>o</sup> Ton.<sup>a</sup> a Duo. La Aurora de la Legua.*











o 800  
na.

mo

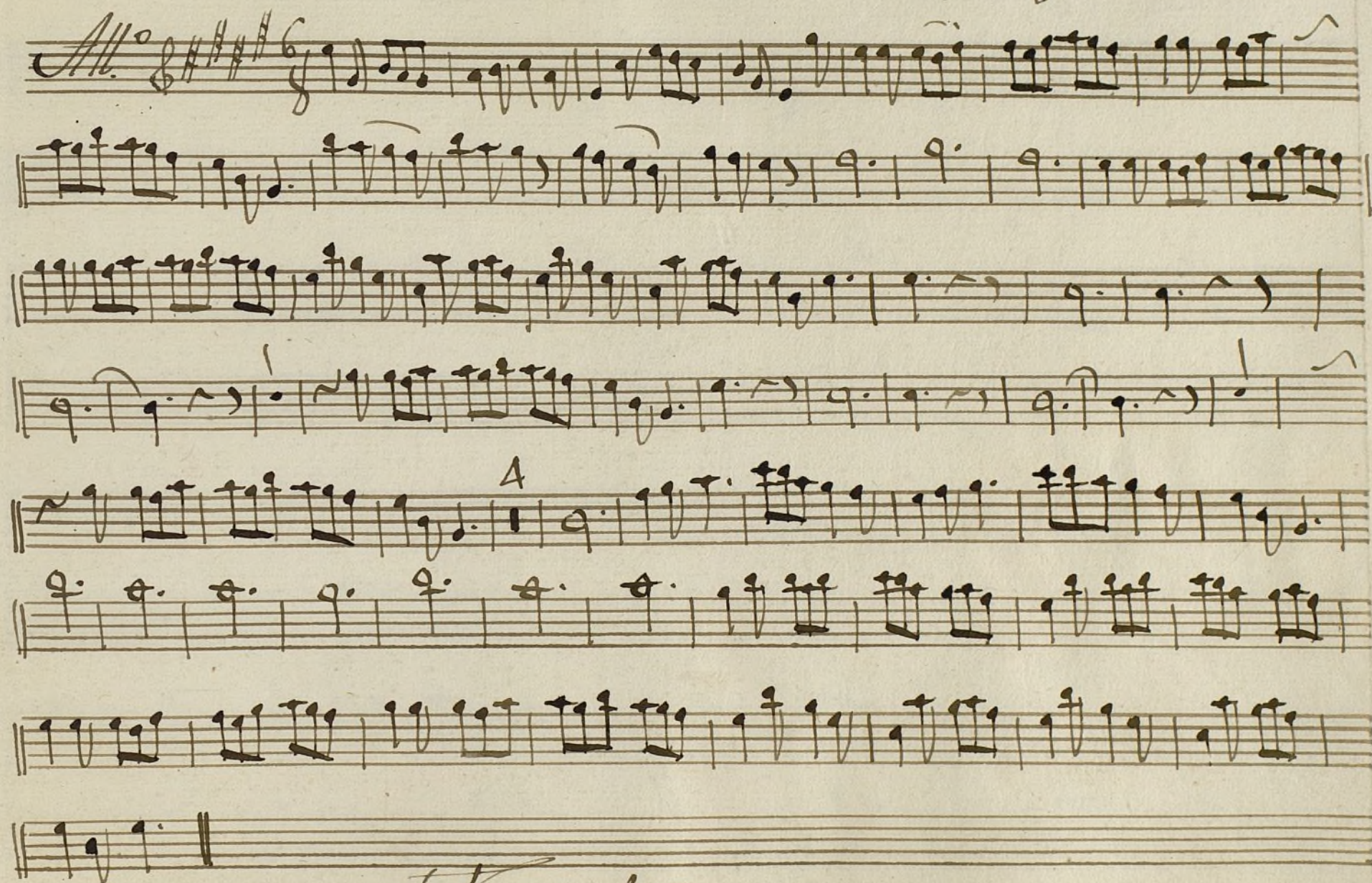






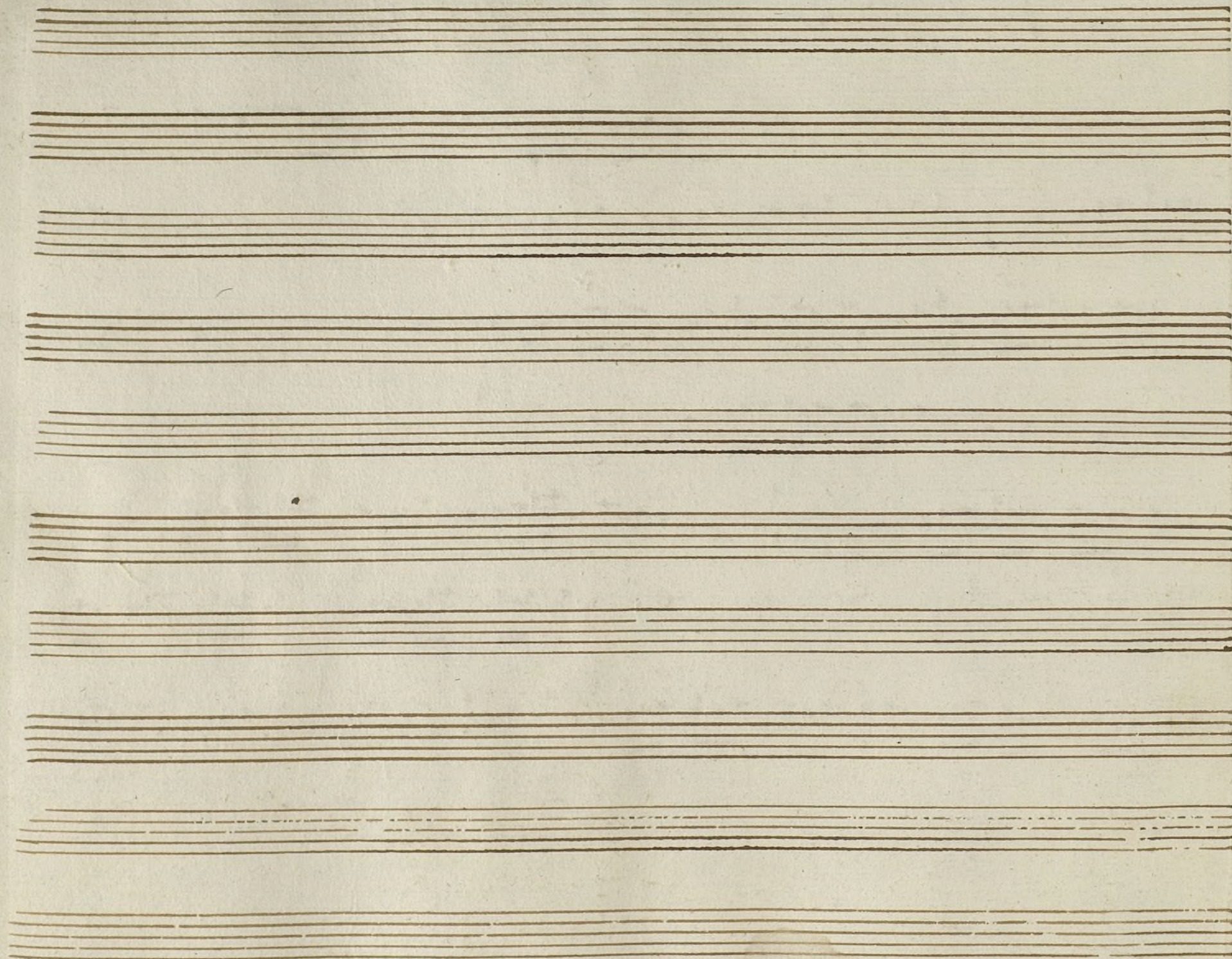
Oboe 1.<sup>o</sup> Ton.<sup>a</sup> a Duo 1.<sup>a</sup> Autora de la Legua.

Mus 99-16



Tacet lo demas.



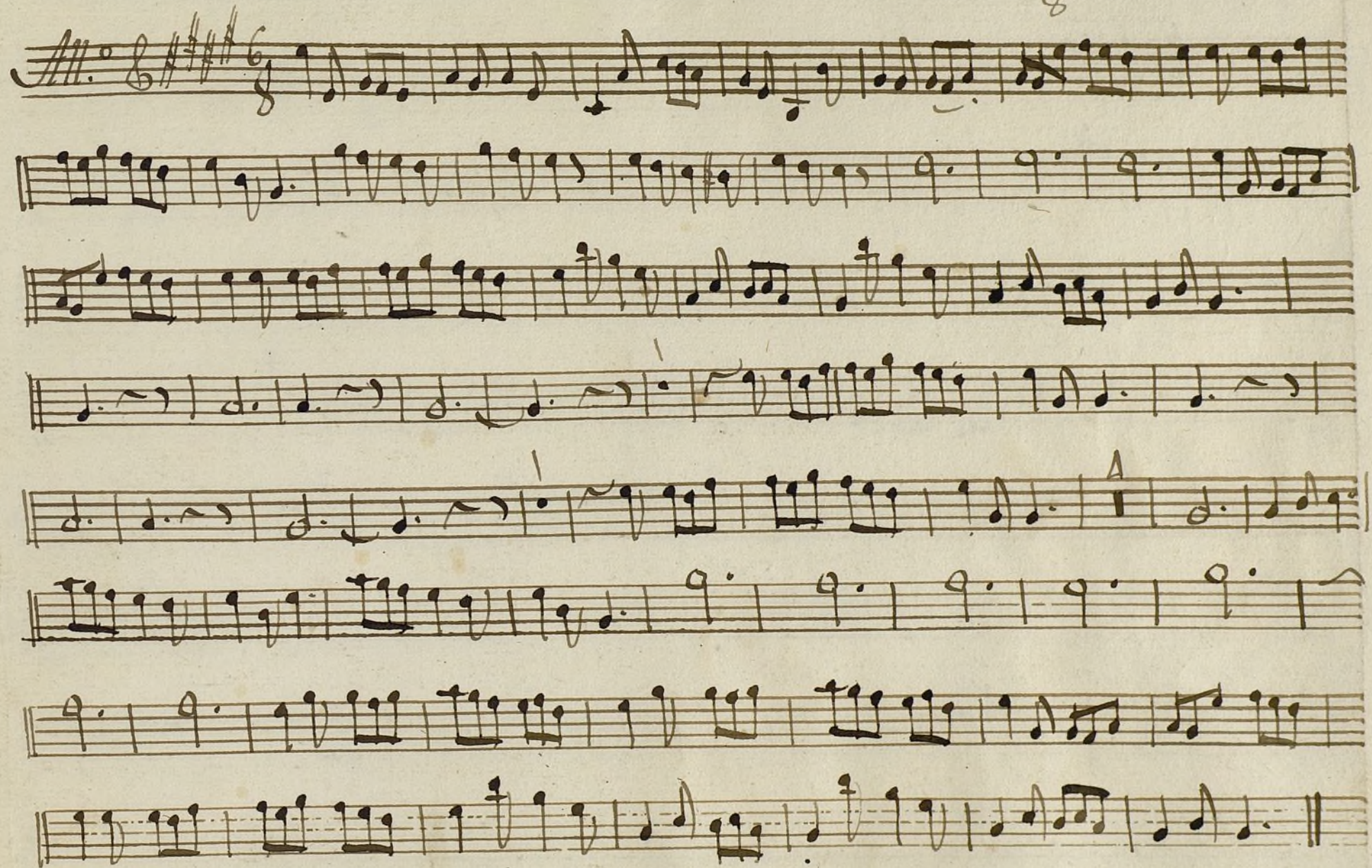


Ayuntamiento de Madrid



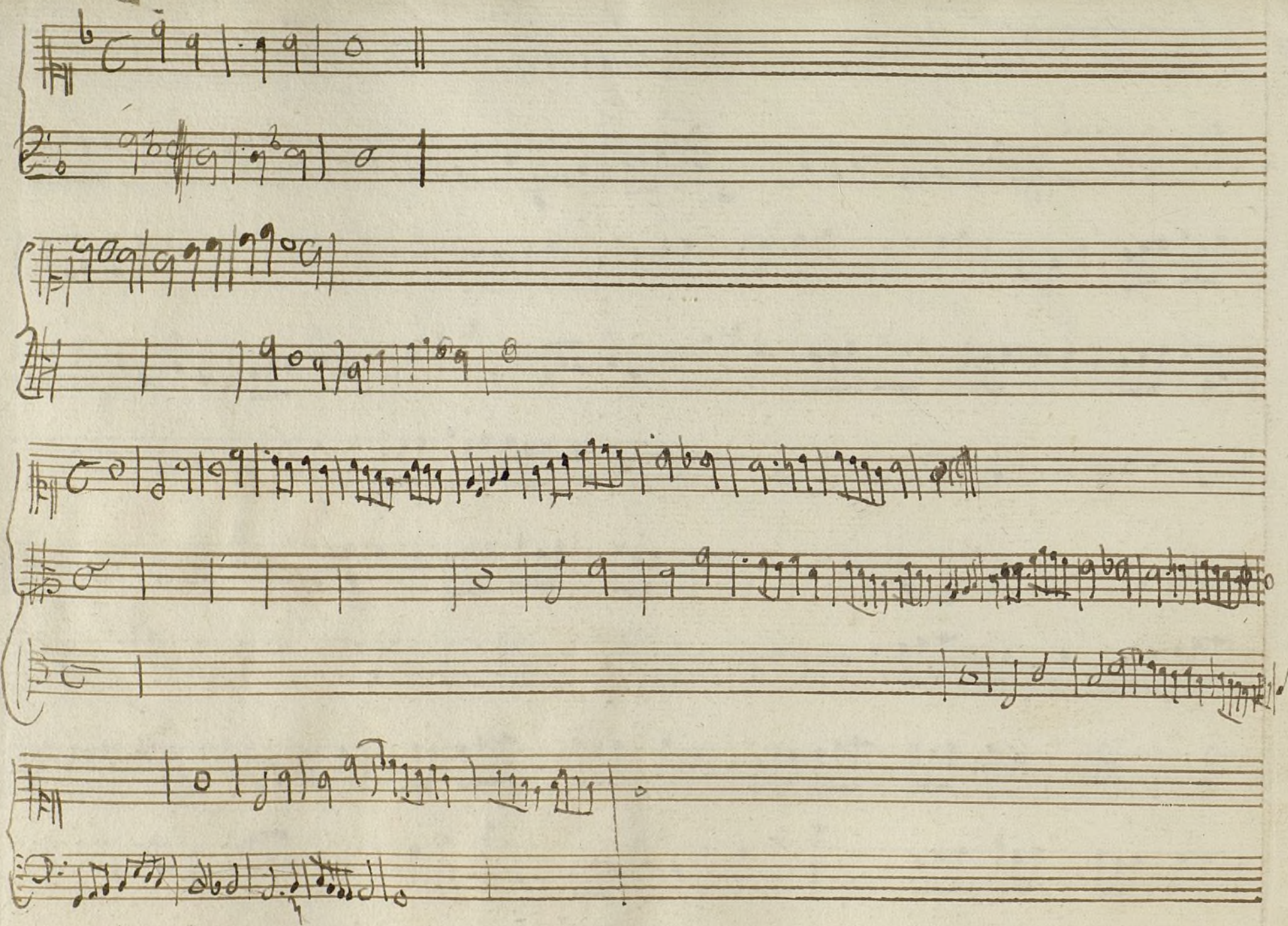
*Oboe 2.ª Ton.ª a Duo la Autora de la Segua.*

Mus 99-16



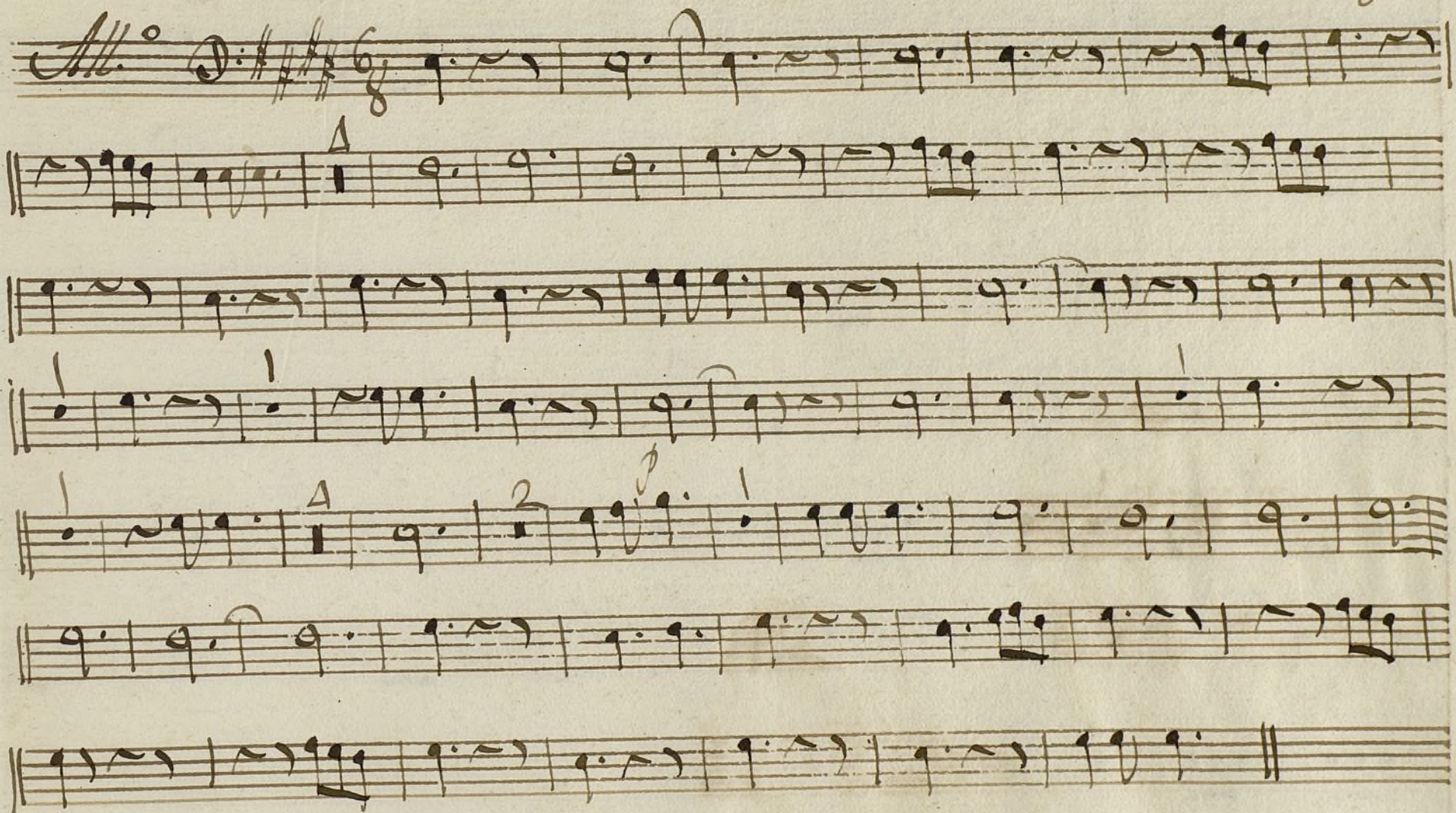
*Tacet lo demas.*







*Trompa 1.<sup>a</sup> Tona* <sup>t</sup> *a Duo la Autora de la Legua.*



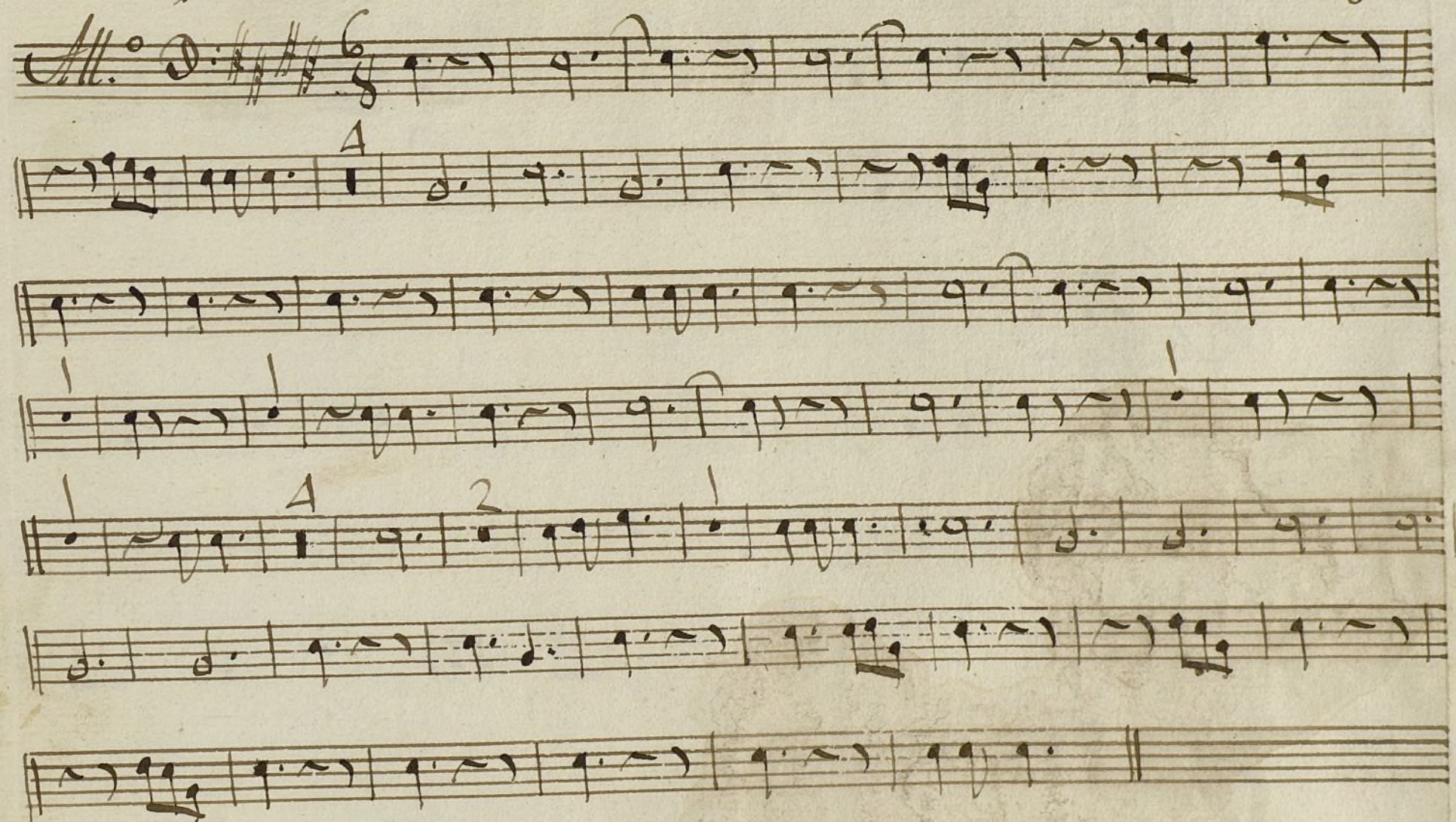
*Tacet Rez.<sup>do</sup> y 6.<sup>ta</sup>*





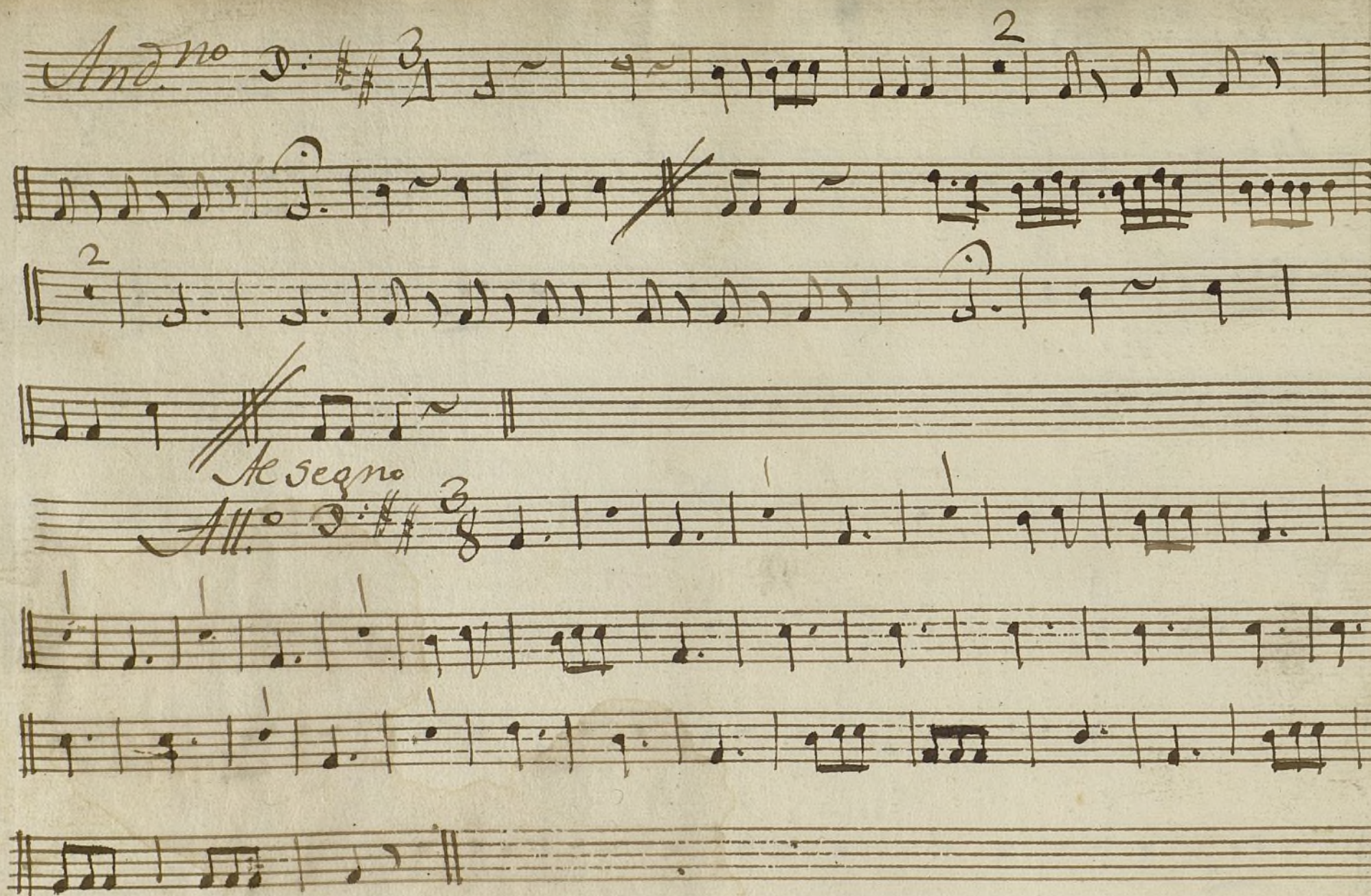


*Trompa 2.<sup>a</sup> Ton.<sup>a</sup> a Duo la Autora de la Legua.*



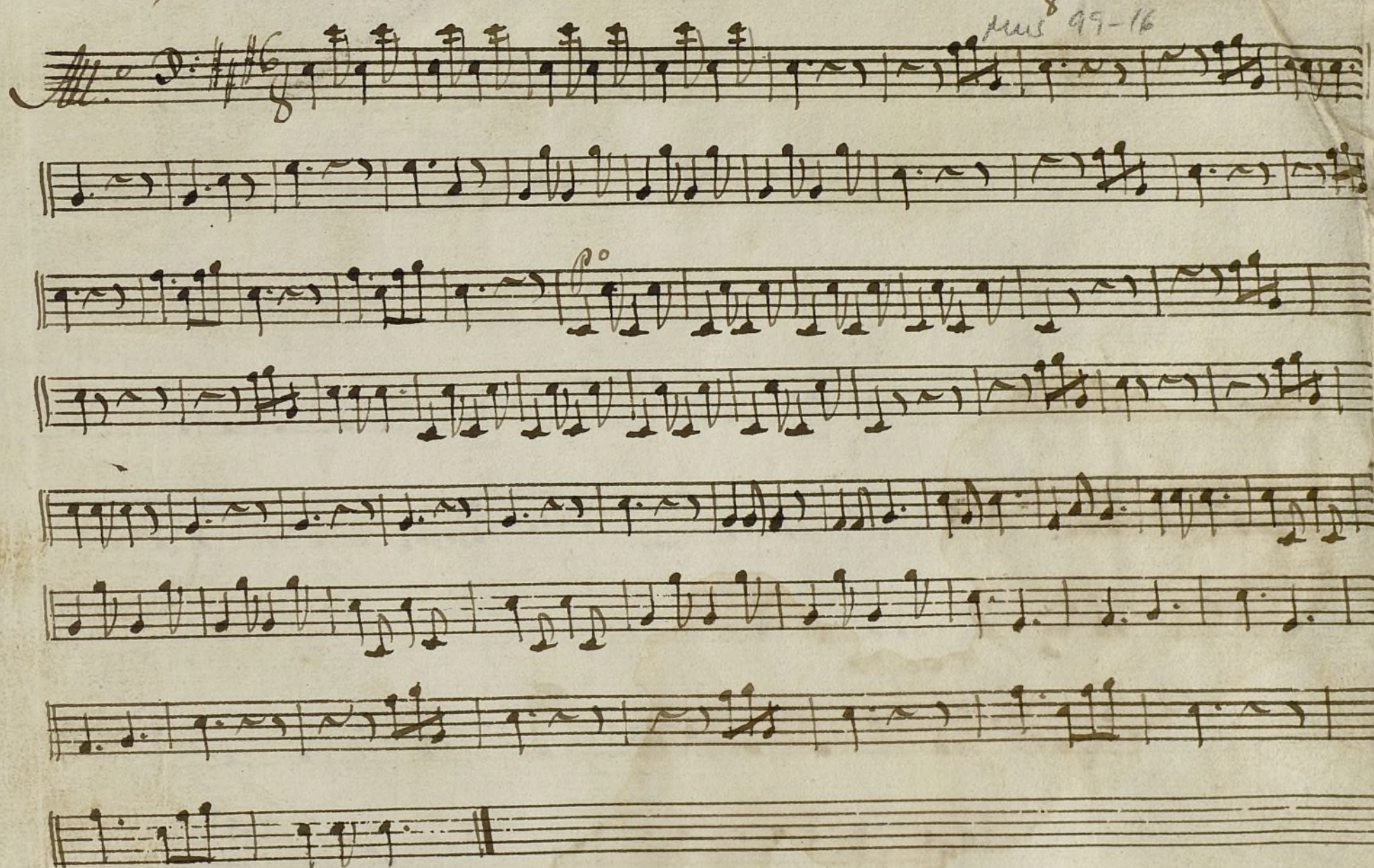
*Rez.<sup>do</sup> y 8 Tacet.*







*Bajo Tona a Duo la Autora de la Segua.*





Rez.<sup>do</sup>

6. All.<sup>o</sup>

*al segno*  
*dos mas.*

*Al segno.*