

Mus 110-14

110-14

Conadilla à Solo

Cazuela ya posentos

1^{ra} Blanco

+

All.^o

Cazuela y bpo sen to: Co ro na
 A Can ta ros pues salgo — U na bre

dor de Da - mas oy ^{Mari qui la oprime} ~~la oprime~~ pide pres
 be to na - da por ti por mala Canso no

da das buenas gracias Lu
 fas ti die por larga ten

ne ra quede gran - des hallas au ti riza -
 dreñ que supli r mu - cho pues tu be la desora -

da ter tu lia don de asis ten las gen tes Ne ca ta das
cia Cu an do me chris ti a na ron que la sal se ol bi da ra

Pa tio del alma mia Nos que te ro y gra das
Con que asi me de ja ron Pan po co sa zo na da

a to dos Jun tos pi do a to dos Jun to
que pre ci so que to dos que pre ci so que

pi-do buenas
 to-dos me prestéis

buenas
 si buenas gra

gra cias presta
 si buenas gra

das buenas
 cias me prestéis

gra cias presta
 si buenas gra

~~a - - - - - presta
 a - - - - - buenas gra~~

~~Das
cias~~ ~~res ta
buestras gra~~

das
cias

buestras gra cias pre ta das
si bues tras gra - cias

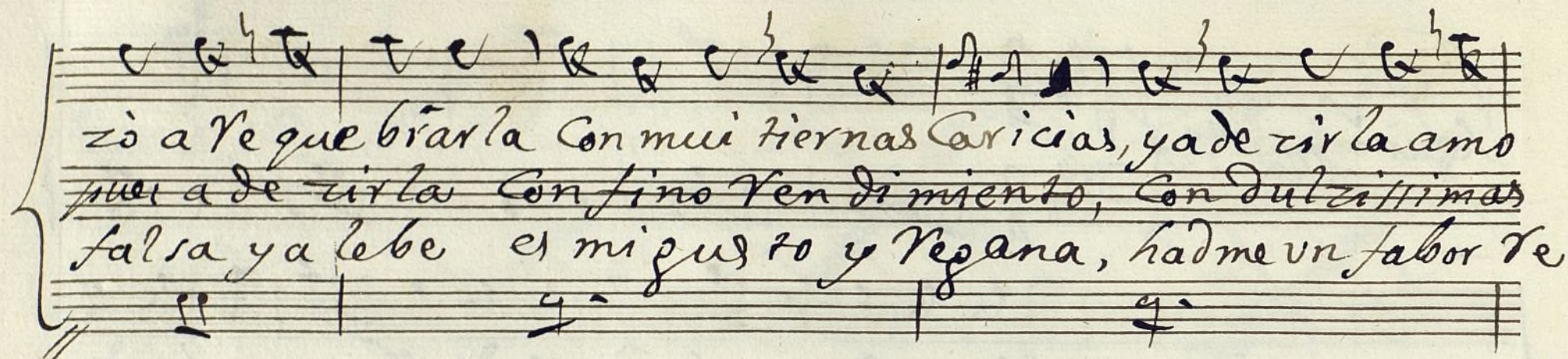
fe *fmo*

allegro

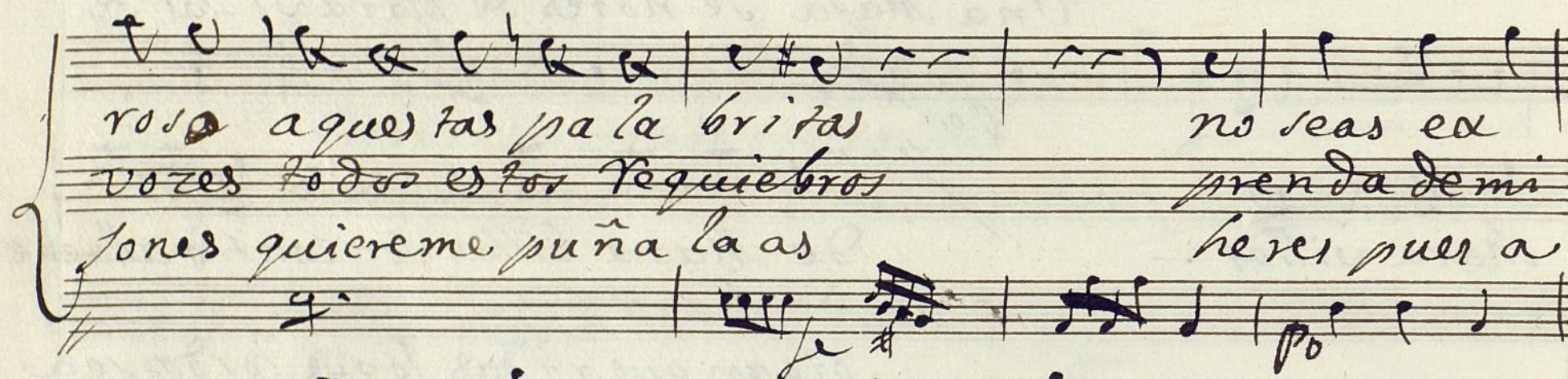
Segui. Alleg. ^{no}

Una Maya se ñores de Maravillas de
 Maravillas — de Maravillas sencontrò alla en el
 de Maravillas
 oigan que ridas lo que los dos sea
 Prado Con un Vria empe
 Claron Con un Vria vobis
 por despedida eres

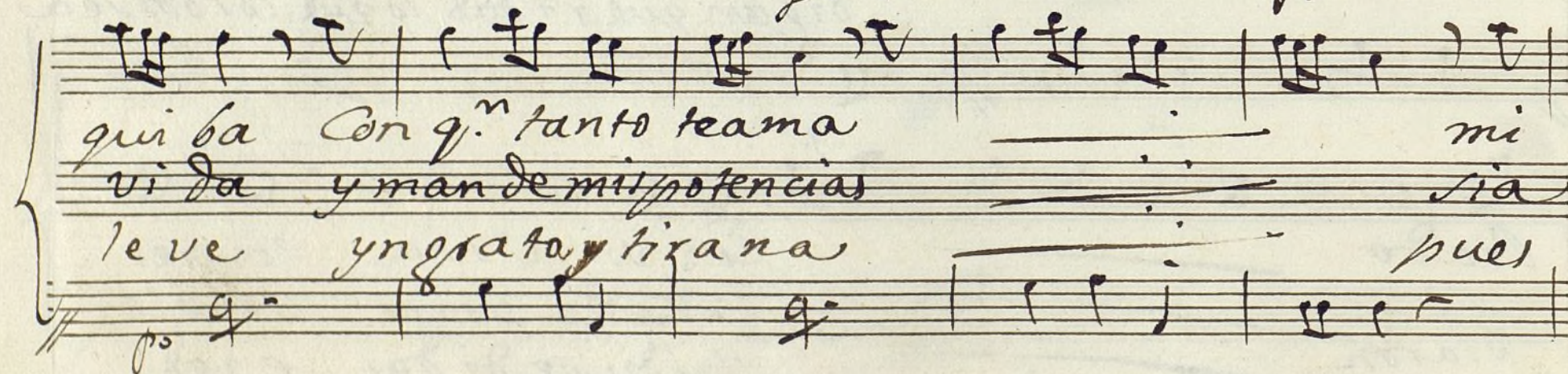
pp



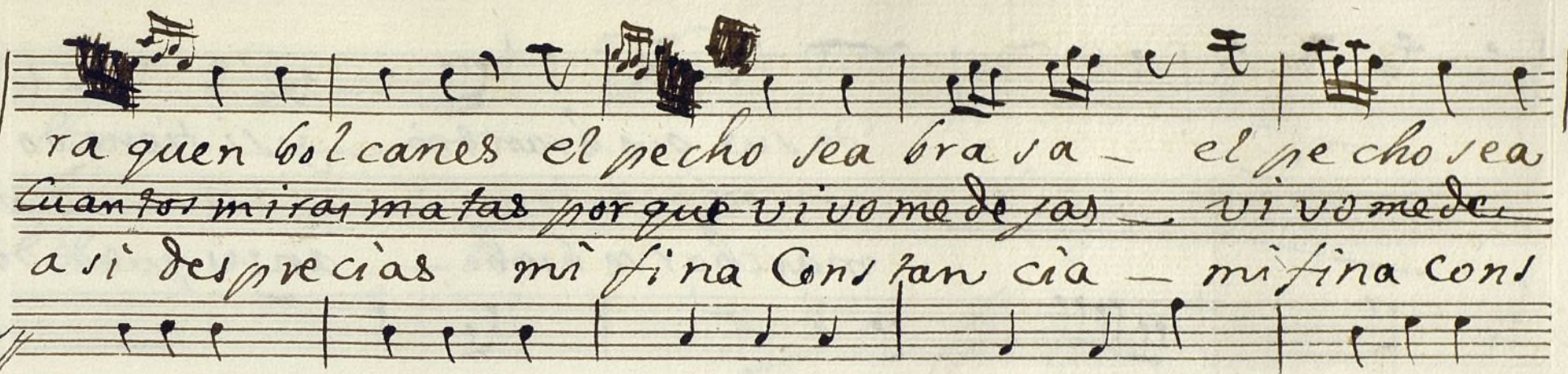
zò a te que bràr la Con mui tiernas Caricias, y a de cir la amo
 puer a de cir la Con fino Ven dimiento, Con dulzissimas
 falsa ya lebe el migusto y Regana, hadme un favor te



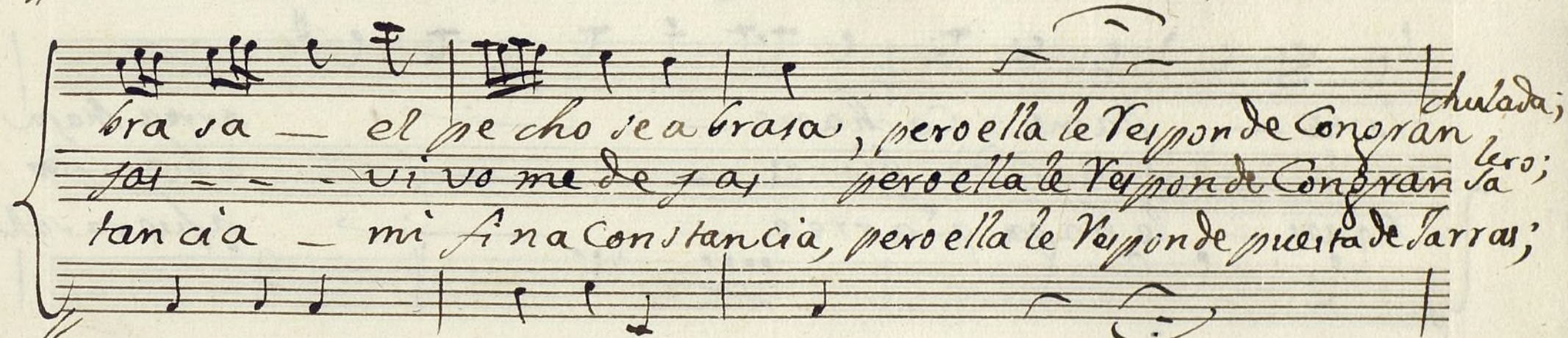
rosa a que las pala britas no seas ex
 voces todos estos Requebros prenda de mi
 Jones quiereme puña la as heres puer a



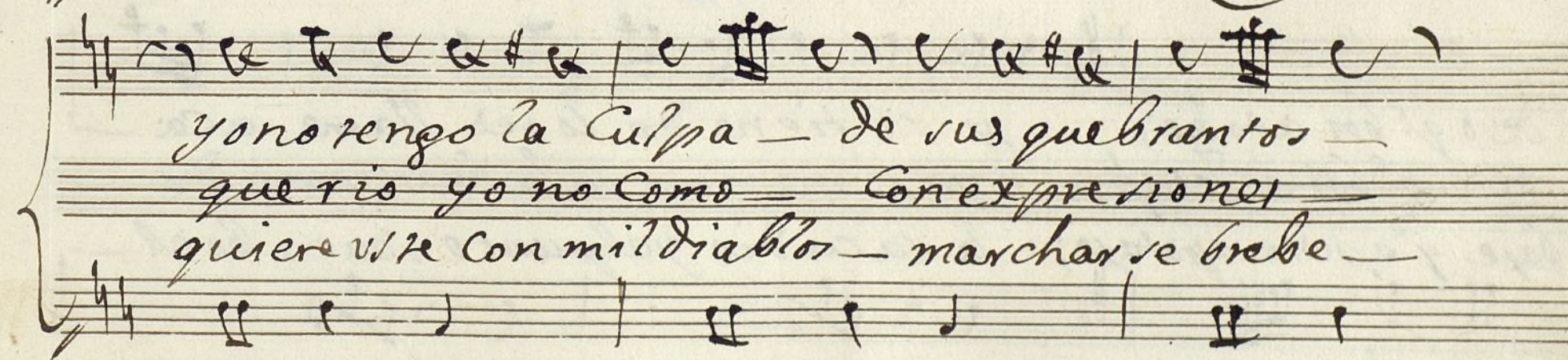
qui ba Con q.ⁿ tanto te ama mi
 vi da y man de mi potencias sia
 le ve yngrata y tirana puer



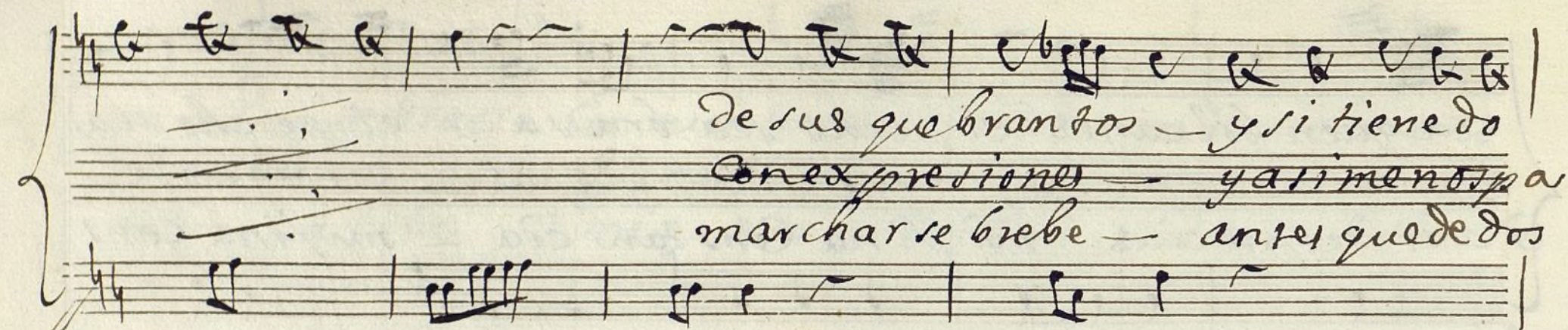
ra quen bolcanes el pecho sea brasa — el pecho sea
 Cuantos miras matas porque vivo me dejas — vivo me de
 asi desprecias mi fina Constancia — mi fina Constancia



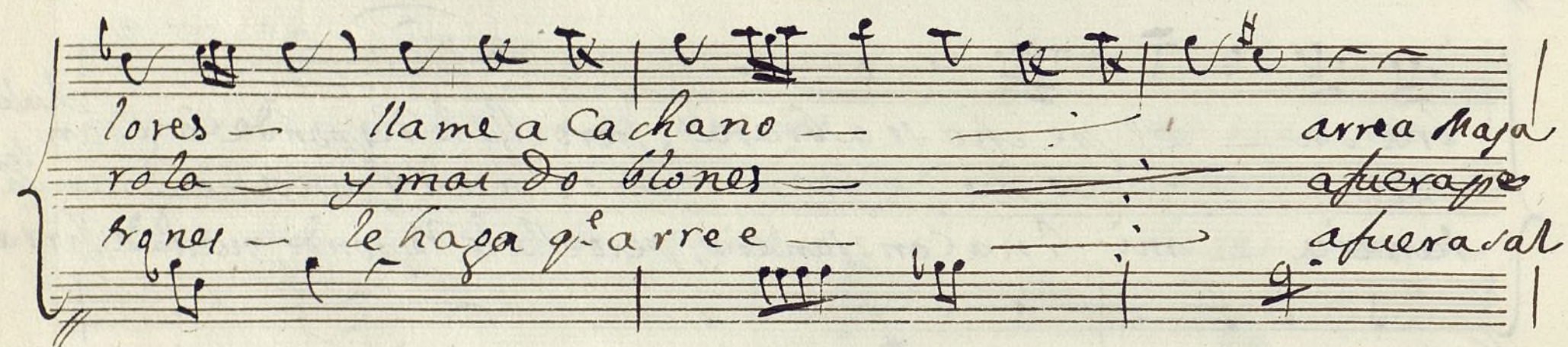
brasa — el pecho sea brasa, pero ella le Responde Congra^{chulada;}
 jas — — vivo me dejas — pero ella le Responde Congra^{lero;}
 tancia — mi fina Constancia, pero ella le Responde puesta de Jarras;



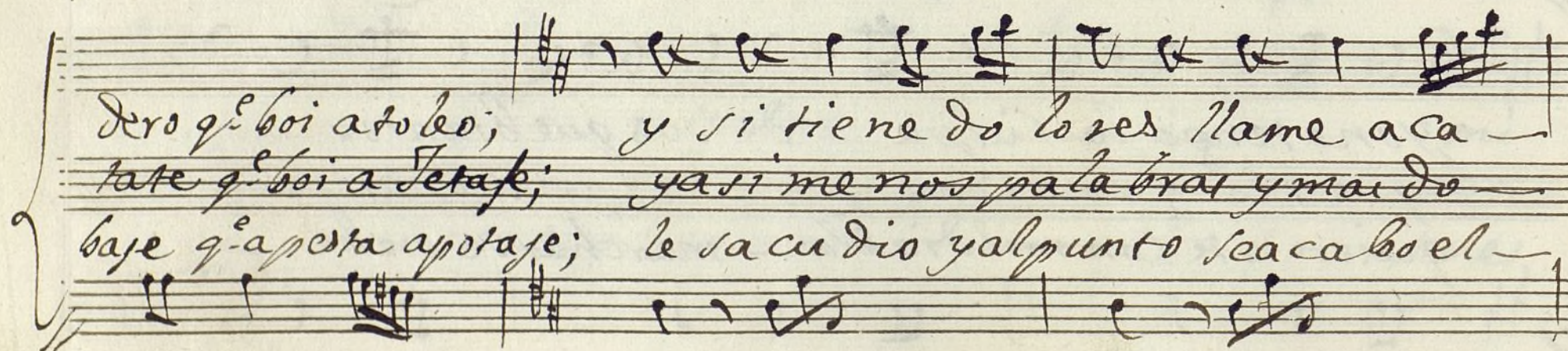
y no tengo la Culpa — de sus quebrantos —
 queris yo no como — Con expresiones —
 quiere vive con mil diablos — marcharse brebe —



De sus quebrantos — y si tiene do
 Con expresiones — ya si me nos pa
 marcharse brebe — antes quede do



lores — llame a Cachano — arrea Maja
 rola — y mai do blones — afuera pe
 trones — le haga q' arree — afuera sal



Dero q' boi a tobo; y si tiene do lores llame a Ca —
 late q' boi a Tetaje; ya si me nos palabras y mai do —
 baje q' a pest a potaje; le saca dio y al punto sea ca bo el —

chano
blones
lanze

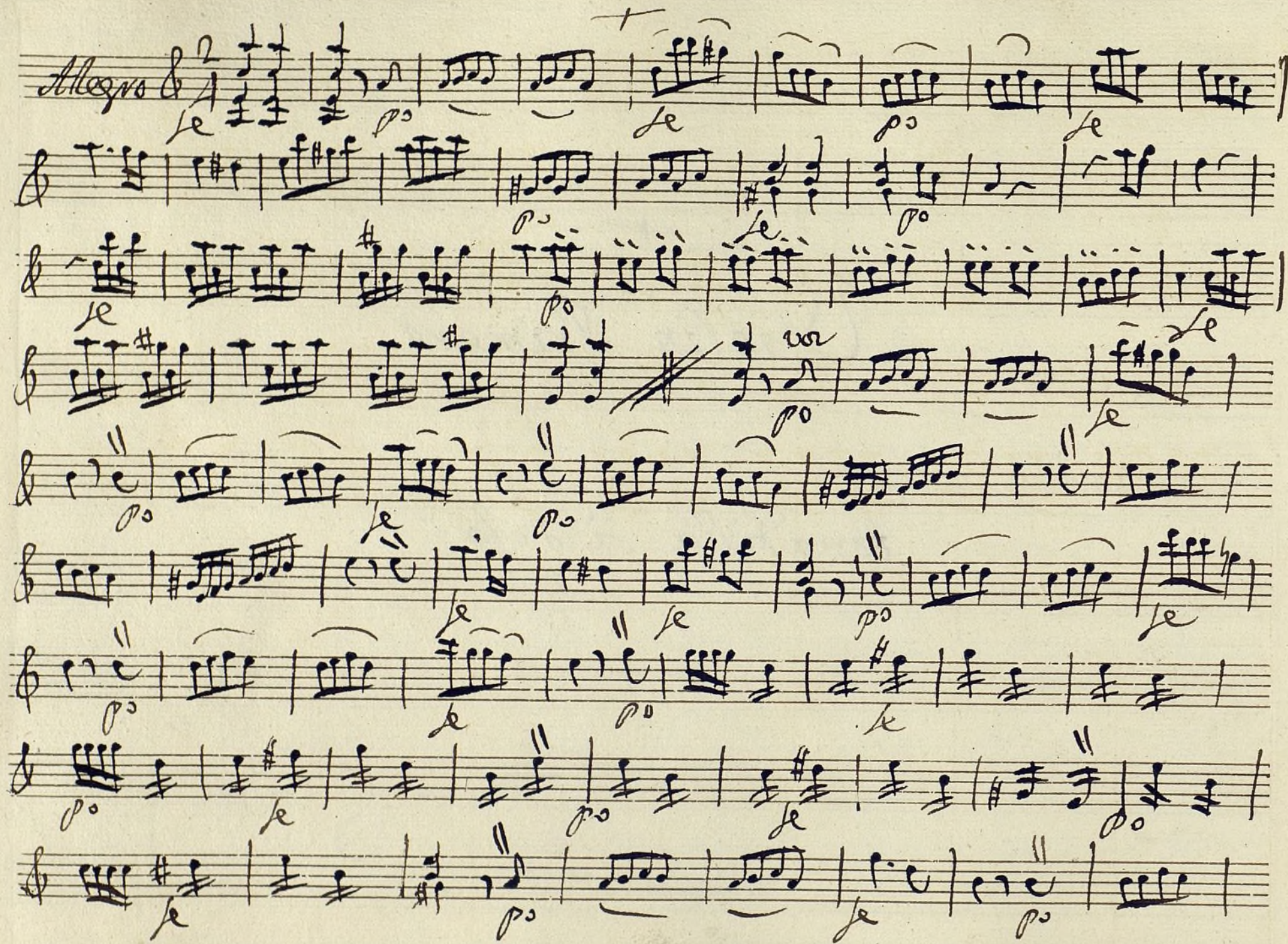
allegro

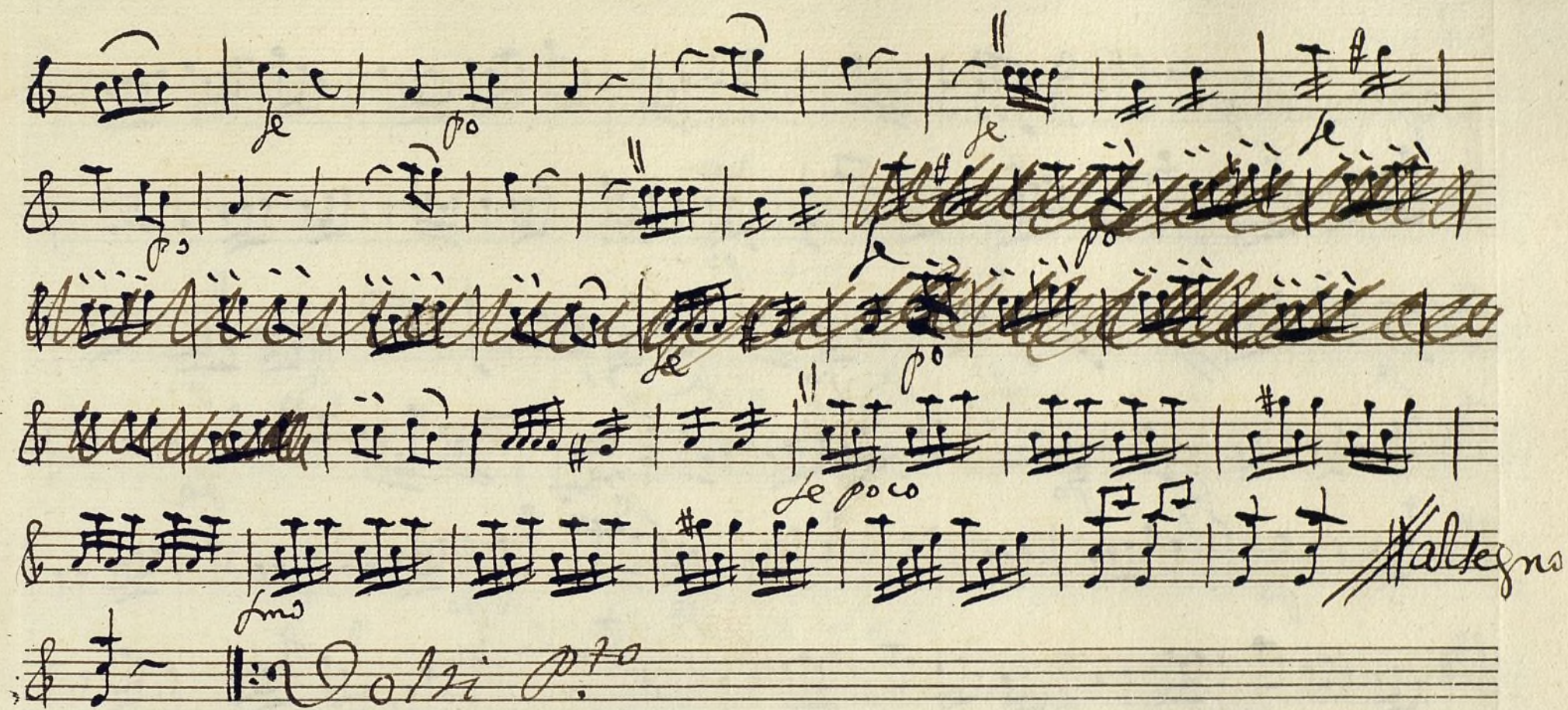
Ayuntamiento de Madrid

+

Violin Primero

Sonadilla à solo;





Sequi. Alleg. $\text{H}\sharp$ $\text{H}\sharp$ $\frac{3}{4}$

Sequi. *Alleg.* $\text{H}\sharp$ $\text{H}\sharp$ $\frac{3}{4}$

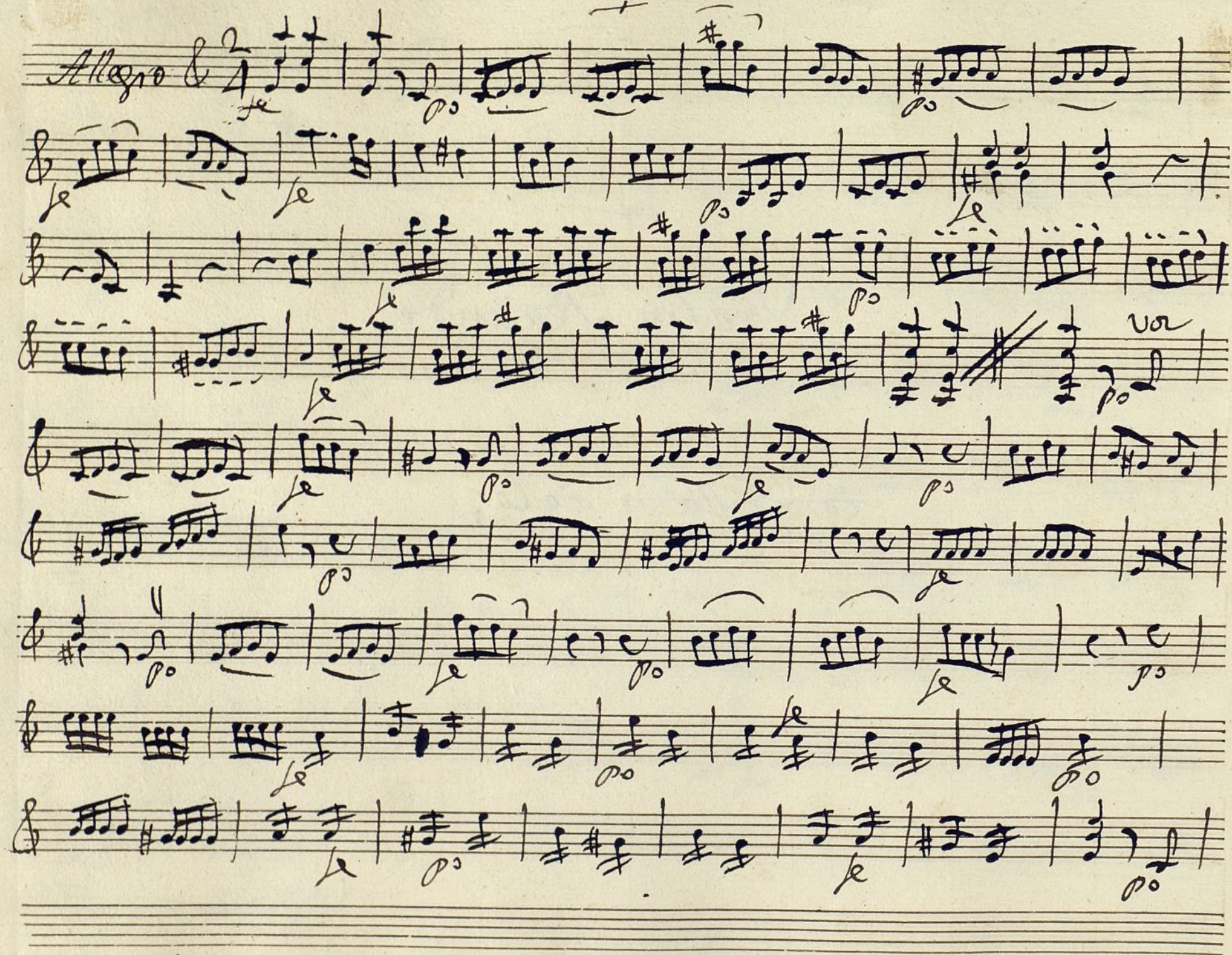
Parola

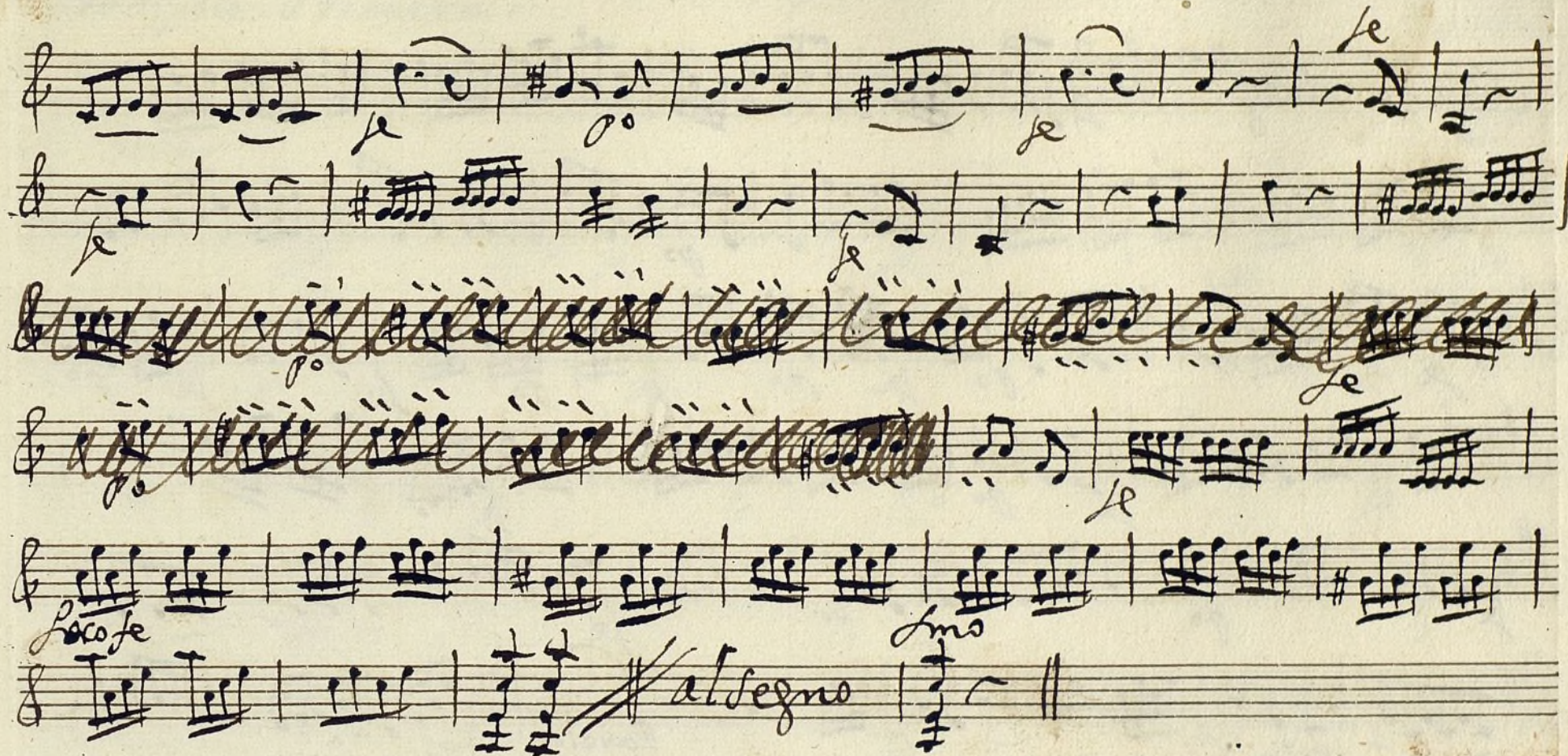
allegro

+

Violin Segundo

tonadilla à solo;





L'Allegretto

Handwritten musical score for a piece titled "L'Allegretto". The score is written on ten staves in G major (one sharp) and 3/4 time. It begins with the tempo marking "L'Allegretto" and the key signature "G major". The music features a variety of rhythmic patterns, including eighth and sixteenth notes, and rests. The score concludes with a double bar line and the word "allegro" written below the final staff.

trampa Primera

+

MUS 110-14

sonadilla à solo;

In Dela

Handwritten musical score for a solo instrument, likely a flute or trumpet, in 2/4 time. The score is written on seven staves. The first staff begins with a treble clef, a key signature of one sharp (F#), and a 2/4 time signature. The notation includes various notes, rests, and dynamic markings such as *se*, *vo*, and *fmo*. There are also numerical markings (2, 4, 6, 10, 16, 3, 5, 5) and a section marked *allegro* with a double bar line. The final staff ends with a double bar line and the word *Volta*.

Trompa segunda
 Bonadilla à solo;

MUS 170-14

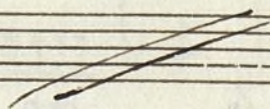
In Dela

All.^o *2* *1^a* *2^a* *3^a* *4^a* *5^a* *6^a* *7^a* *8^a* *9^a* *10^a* *11^a* *12^a* *13^a* *14^a* *15^a* *16^a* *17^a* *18^a* *19^a* *20^a* *21^a* *22^a* *23^a* *24^a* *25^a* *26^a* *27^a* *28^a* *29^a* *30^a* *31^a* *32^a* *33^a* *34^a* *35^a* *36^a* *37^a* *38^a* *39^a* *40^a* *41^a* *42^a* *43^a* *44^a* *45^a* *46^a* *47^a* *48^a* *49^a* *50^a* *51^a* *52^a* *53^a* *54^a* *55^a* *56^a* *57^a* *58^a* *59^a* *60^a* *61^a* *62^a* *63^a* *64^a* *65^a* *66^a* *67^a* *68^a* *69^a* *70^a* *71^a* *72^a* *73^a* *74^a* *75^a* *76^a* *77^a* *78^a* *79^a* *80^a* *81^a* *82^a* *83^a* *84^a* *85^a* *86^a* *87^a* *88^a* *89^a* *90^a* *91^a* *92^a* *93^a* *94^a* *95^a* *96^a* *97^a* *98^a* *99^a* *100^a* *101^a* *102^a* *103^a* *104^a* *105^a* *106^a* *107^a* *108^a* *109^a* *110^a* *111^a* *112^a* *113^a* *114^a* *115^a* *116^a* *117^a* *118^a* *119^a* *120^a* *121^a* *122^a* *123^a* *124^a* *125^a* *126^a* *127^a* *128^a* *129^a* *130^a* *131^a* *132^a* *133^a* *134^a* *135^a* *136^a* *137^a* *138^a* *139^a* *140^a* *141^a* *142^a* *143^a* *144^a* *145^a* *146^a* *147^a* *148^a* *149^a* *150^a* *151^a* *152^a* *153^a* *154^a* *155^a* *156^a* *157^a* *158^a* *159^a* *160^a* *161^a* *162^a* *163^a* *164^a* *165^a* *166^a* *167^a* *168^a* *169^a* *170^a* *171^a* *172^a* *173^a* *174^a* *175^a* *176^a* *177^a* *178^a* *179^a* *180^a* *181^a* *182^a* *183^a* *184^a* *185^a* *186^a* *187^a* *188^a* *189^a* *190^a* *191^a* *192^a* *193^a* *194^a* *195^a* *196^a* *197^a* *198^a* *199^a* *200^a* *201^a* *202^a* *203^a* *204^a* *205^a* *206^a* *207^a* *208^a* *209^a* *210^a* *211^a* *212^a* *213^a* *214^a* *215^a* *216^a* *217^a* *218^a* *219^a* *220^a* *221^a* *222^a* *223^a* *224^a* *225^a* *226^a* *227^a* *228^a* *229^a* *230^a* *231^a* *232^a* *233^a* *234^a* *235^a* *236^a* *237^a* *238^a* *239^a* *240^a* *241^a* *242^a* *243^a* *244^a* *245^a* *246^a* *247^a* *248^a* *249^a* *250^a* *251^a* *252^a* *253^a* *254^a* *255^a* *256^a* *257^a* *258^a* *259^a* *260^a* *261^a* *262^a* *263^a* *264^a* *265^a* *266^a* *267^a* *268^a* *269^a* *270^a* *271^a* *272^a* *273^a* *274^a* *275^a* *276^a* *277^a* *278^a* *279^a* *280^a* *281^a* *282^a* *283^a* *284^a* *285^a* *286^a* *287^a* *288^a* *289^a* *290^a* *291^a* *292^a* *293^a* *294^a* *295^a* *296^a* *297^a* *298^a* *299^a* *300^a* *301^a* *302^a* *303^a* *304^a* *305^a* *306^a* *307^a* *308^a* *309^a* *310^a* *311^a* *312^a* *313^a* *314^a* *315^a* *316^a* *317^a* *318^a* *319^a* *320^a* *321^a* *322^a* *323^a* *324^a* *325^a* *326^a* *327^a* *328^a* *329^a* *330^a* *331^a* *332^a* *333^a* *334^a* *335^a* *336^a* *337^a* *338^a* *339^a* *340^a* *341^a* *342^a* *343^a* *344^a* *345^a* *346^a* *347^a* *348^a* *349^a* *350^a* *351^a* *352^a* *353^a* *354^a* *355^a* *356^a* *357^a* *358^a* *359^a* *360^a* *361^a* *362^a* *363^a* *364^a* *365^a* *366^a* *367^a* *368^a* *369^a* *370^a* *371^a* *372^a* *373^a* *374^a* *375^a* *376^a* *377^a* *378^a* *379^a* *380^a* *381^a* *382^a* *383^a* *384^a* *385^a* *386^a* *387^a* *388^a* *389^a* *390^a* *391^a* *392^a* *393^a* *394^a* *395^a* *396^a* *397^a* *398^a* *399^a* *400^a* *401^a* *402^a* *403^a* *404^a* *405^a* *406^a* *407^a* *408^a* *409^a* *410^a* *411^a* *412^a* *413^a* *414^a* *415^a* *416^a* *417^a* *418^a* *419^a* *420^a* *421^a* *422^a* *423^a* *424^a* *425^a* *426^a* *427^a* *428^a* *429^a* *430^a* *431^a* *432^a* *433^a* *434^a* *435^a* *436^a* *437^a* *438^a* *439^a* *440^a* *441^a* *442^a* *443^a* *444^a* *445^a* *446^a* *447^a* *448^a* *449^a* *450^a* *451^a* *452^a* *453^a* *454^a* *455^a* *456^a* *457^a* *458^a* *459^a* *460^a* *461^a* *462^a* *463^a* *464^a* *465^a* *466^a* *467^a* *468^a* *469^a* *470^a* *471^a* *472^a* *473^a* *474^a* *475^a* *476^a* *477^a* *478^a* *479^a* *480^a* *481^a* *482^a* *483^a* *484^a* *485^a* *486^a* *487^a* *488^a* *489^a* *490^a* *491^a* *492^a* *493^a* *494^a* *495^a* *496^a* *497^a* *498^a* *499^a* *500^a* *501^a* *502^a* *503^a* *504^a* *505^a* *506^a* *507^a* *508^a* *509^a* *510^a* *511^a* *512^a* *513^a* *514^a* *515^a* *516^a* *517^a* *518^a* *519^a* *520^a* *521^a* *522^a* *523^a* *524^a* *525^a* *526^a* *527^a* *528^a* *529^a* *530^a* *531^a* *532^a* *533^a* *534^a* *535^a* *536^a* *537^a* *538^a* *539^a* *540^a* *541^a* *542^a* *543^a* *544^a* *545^a* *546^a* *547^a* *548^a* *549^a* *550^a* *551^a* *552^a* *553^a* *554^a* *555^a* *556^a* *557^a* *558^a* *559^a* *560^a* *561^a* *562^a* *563^a* *564^a* *565^a* *566^a* *567^a* *568^a* *569^a* *570^a* *571^a* *572^a* *573^a* *574^a* *575^a* *576^a* *577^a* *578^a* *579^a* *580^a* *581^a* *582^a* *583^a* *584^a* *585^a* *586^a* *587^a* *588^a* *589^a* *590^a* *591^a* *592^a* *593^a* *594^a* *595^a* *596^a* *597^a* *598^a* *599^a* *600^a* *601^a* *602^a* *603^a* *604^a* *605^a* *606^a* *607^a* *608^a* *609^a* *610^a* *611^a* *612^a* *613^a* *614^a* *615^a* *616^a* *617^a* *618^a* *619^a* *620^a* *621^a* *622^a* *623^a* *624^a* *625^a* *626^a* *627^a* *628^a* *629^a* *630^a* *631^a* *632^a* *633^a* *634^a* *635^a* *636^a* *637^a* *638^a* *639^a* *640^a* *641^a* *642^a* *643^a* *644^a* *645^a* *646^a* *647^a* *648^a* *649^a* *650^a* *651^a* *652^a* *653^a* *654^a* *655^a* *656^a* *657^a* *658^a* *659^a* *660^a* *661^a* *662^a* *663^a* *664^a* *665^a* *666^a* *667^a* *668^a* *669^a* *670^a* *671^a* *672^a* *673^a* *674^a* *675^a* *676^a* *677^a* *678^a* *679^a* *680^a* *681^a* *682^a* *683^a* *684^a* *685^a* *686^a* *687^a* *688^a* *689^a* *690^a* *691^a* *692^a* *693^a* *694^a* *695^a* *696^a* *697^a* *698^a* *699^a* *700^a* *701^a* *702^a* *703^a* *704^a* *705^a* *706^a* *707^a* *708^a* *709^a* *710^a* *711^a* *712^a* *713^a* *714^a* *715^a* *716^a* *717^a* *718^a* *719^a* *720^a* *721^a* *722^a* *723^a* *724^a* *725^a* *726^a* *727^a* *728^a* *729^a* *730^a* *731^a* *732^a* *733^a* *734^a* *735^a* *736^a* *737^a* *738^a* *739^a* *740^a* *741^a* *742^a* *743^a* *744^a* *745^a* *746^a* *747^a* *748^a* *749^a* *750^a* *751^a* *752^a* *753^a* *754^a* *755^a* *756^a* *757^a* *758^a* *759^a* *760^a* *761^a* *762^a* *763^a* *764^a* *765^a* *766^a* *767^a* *768^a* *769^a* *7*

+

Contrabajo;

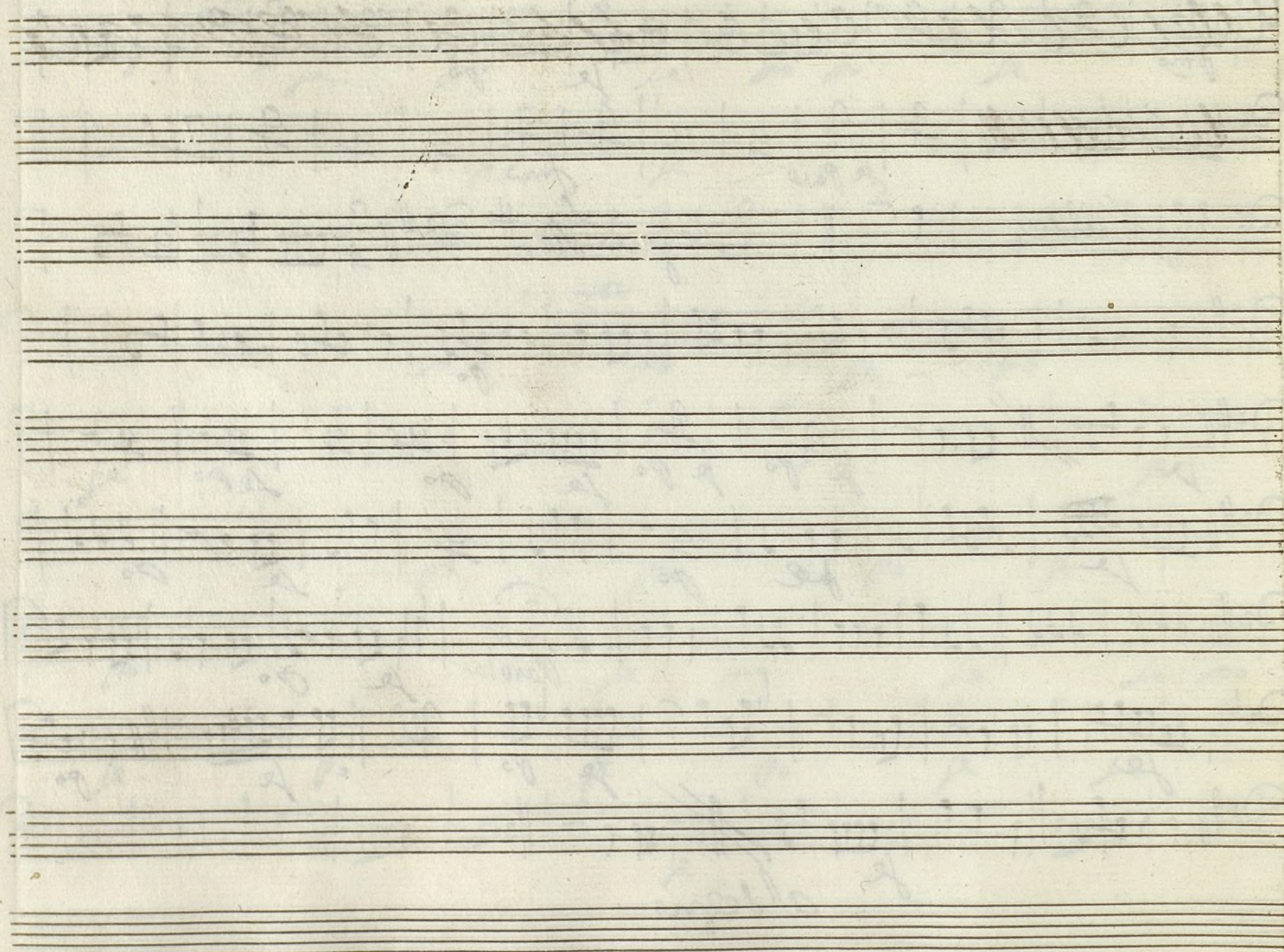
Sonadilla à solo;



Allegro 2/4

Handwritten musical score for a piece titled "Allegro" in 2/4 time. The score consists of ten staves of music, each containing various rhythmic patterns and dynamic markings. The first staff begins with the tempo marking "Allegro" and the time signature "2/4". The music is written in a single melodic line. The notation includes eighth and sixteenth notes, rests, and bar lines. Dynamic markings such as "f" (forte) and "p" (piano) are used throughout. A double bar line with a repeat sign is present on the fourth staff. The handwriting is in ink on aged paper.

Handwritten musical score on ten staves. The notation includes various musical symbols such as notes, rests, and dynamic markings. The score is written in a cursive, handwritten style. The first staff begins with a treble clef and a key signature of one sharp (F#). The second staff begins with a treble clef and a key signature of one sharp. The third staff begins with a treble clef and a key signature of one sharp, followed by the word "allegro" and a double bar line. The fourth staff begins with a treble clef and a key signature of one sharp. The fifth staff begins with a treble clef and a key signature of one sharp. The sixth staff begins with a treble clef and a key signature of one sharp. The seventh staff begins with a treble clef and a key signature of one sharp. The eighth staff begins with a treble clef and a key signature of one sharp. The ninth staff begins with a treble clef and a key signature of one sharp. The tenth staff begins with a treble clef and a key signature of one sharp. The score concludes with the word "allegro" and a double bar line.



Ayuntamiento de Madrid