

110-4

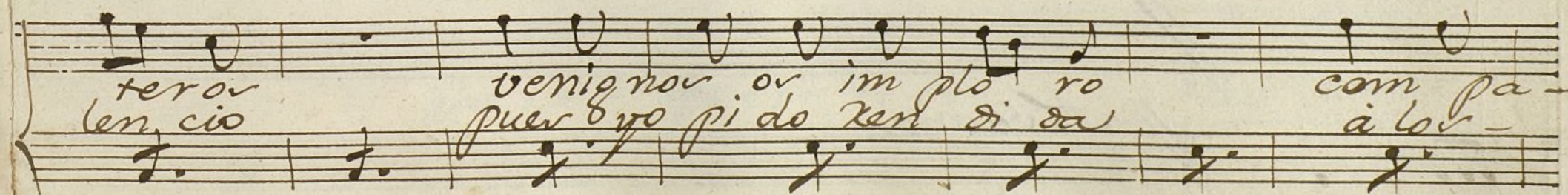
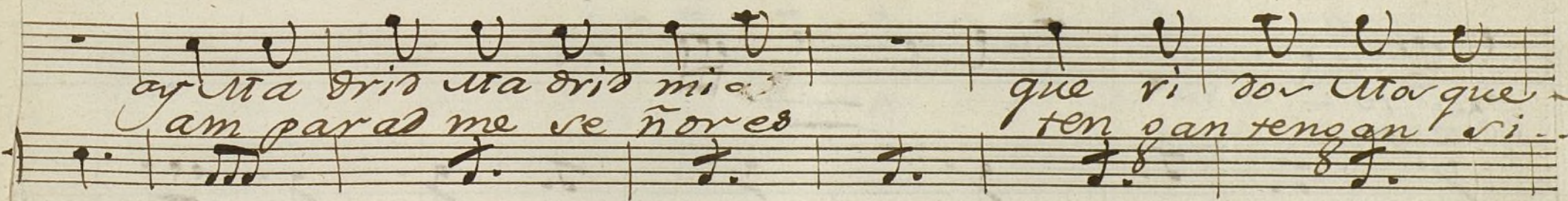
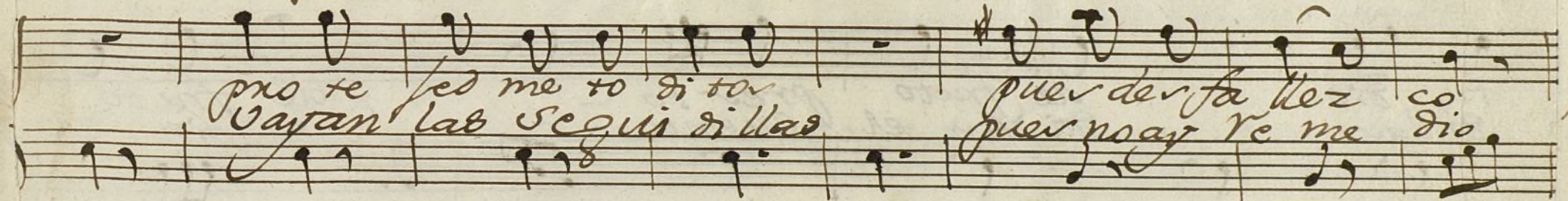
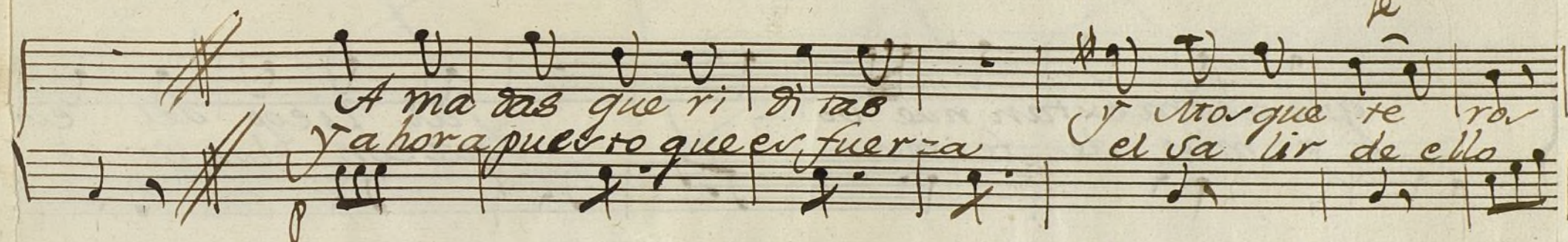
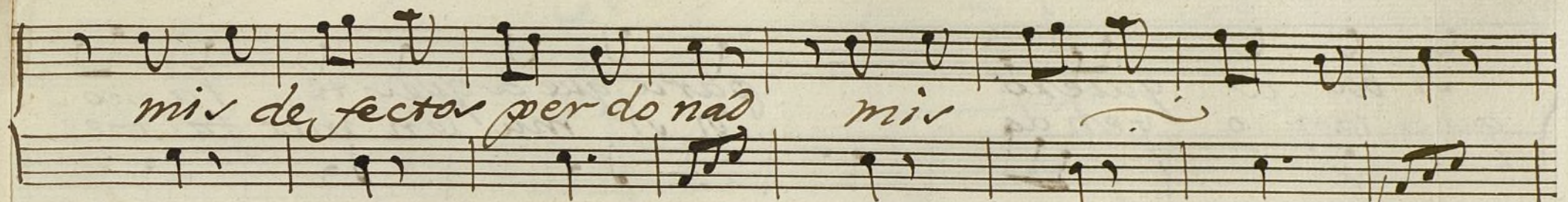
+

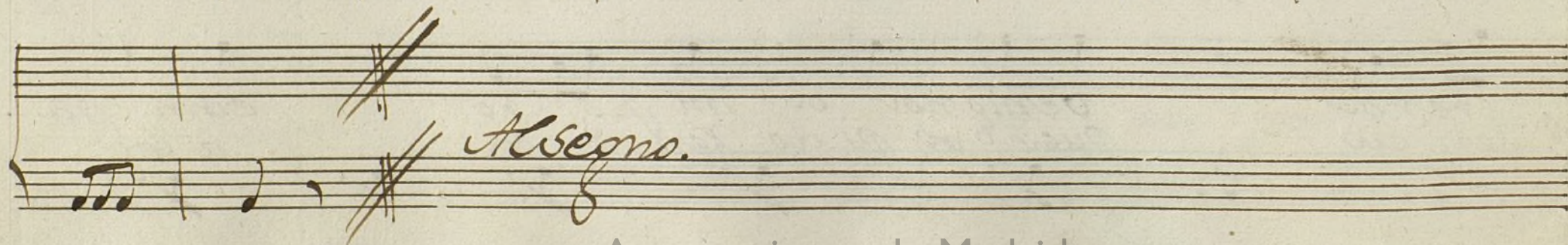
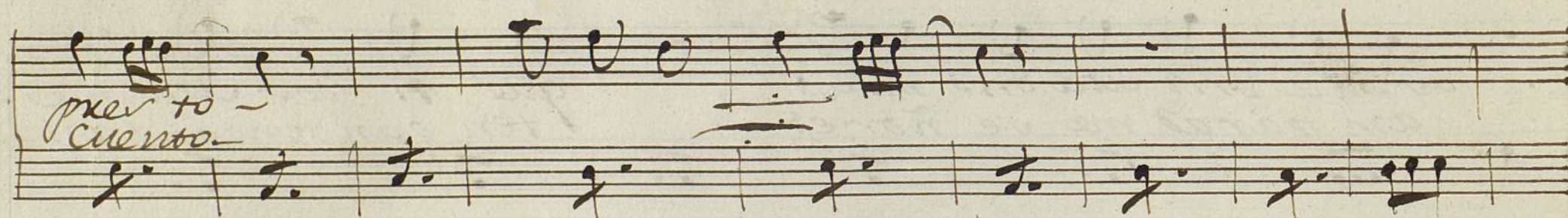
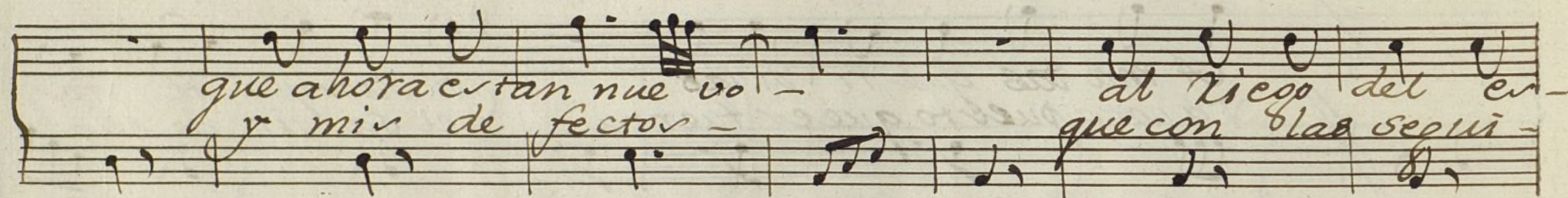
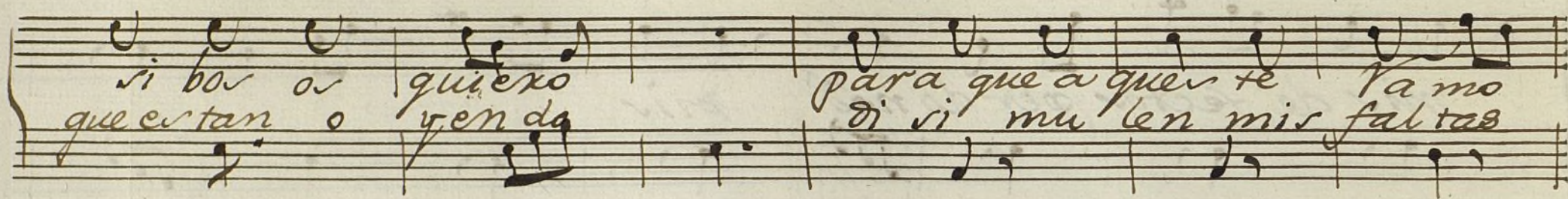
Conadilla à solo

Del Prometimiento;

J^{ra} Ramos

Handwritten musical score for "Marcha de Madrid" by Carlos Lleras. The score is written on ten staves. The first staff is for the piano (p) and the second for the violin (v). The tempo is marked "Allegro" and the key signature is one sharp (F#). The time signature is 3/4. The lyrics are: "do mi sol Madrid de mi co ra zon" and "Ve mi fa". The score is handwritten in ink on aged paper.





ciérais te mer

Segui. Allegro

ay Madrid Madrid mio Corte de el alma

ay queri di queri di queri di tot ay do no

si dono si tos del alma

ay Madrid Madrid

mio Cor re del alma

Cor re del alma amparad a esta po bre des

Ven tu rada amparad a esta po bre des ven tu

ra da nada pro me to

bue tros si mo re ni tos

pues en sus tancia solo aplicar me os do i pa la bra

si dulces dueños aquesto os Juro y esto pro me to

ay mo re ni mo re ni mo re ni to ay que ri di que ri

ay ay dulces due dulces

Di'os del alma y sia caso algun dia
 Due dulces dueños y sia caso algun dia

logro mis ansias para vosotros solos seran mis
 salgo con ello sera de a guese como el fruto

gracias
 vuestro

allegro

Handwritten musical score on ten staves. The notation includes various musical symbols such as clefs, key signatures (three sharps), time signatures, and dynamic markings like *p* (piano) and *se* (sempre). The score is divided into sections by double bar lines and repeat signs. The sixth staff contains dense, overlapping notation, possibly representing a complex texture or a correction. The seventh staff is marked *Allegro* and *Siguen Segui*. The eighth and ninth staves are marked *And.* and *se*, and are crossed out with a large diagonal line.

Violin Secondo

Mus 110-4

tonadilla a Solo.

A handwritten musical score on aged, yellowed paper. The score is written in brown ink and consists of ten staves. The first staff begins with a treble clef, a key signature of two sharps (F# and C#), and a 3/8 time signature. The music is written in a complex, rhythmic style with many beamed notes and rests. There are several handwritten annotations in the margins and between the staves, including the word "L'Espresso" written vertically on the left side of the first staff, and the word "L'Espresso" written horizontally below the first staff. There are also some small, illegible handwritten notes and markings throughout the score. The paper shows signs of age, including discoloration and some small stains.

Segu. Medio ayre $\text{C}\sharp\sharp\text{ } \frac{3}{4}$

allegro

All.^o G major $\frac{3}{4}$ *po*

Le *allegro*

Sequid.^o Medio ayre G major $\frac{3}{4}$ *po*

Le *po* *Le* *po* *Le*

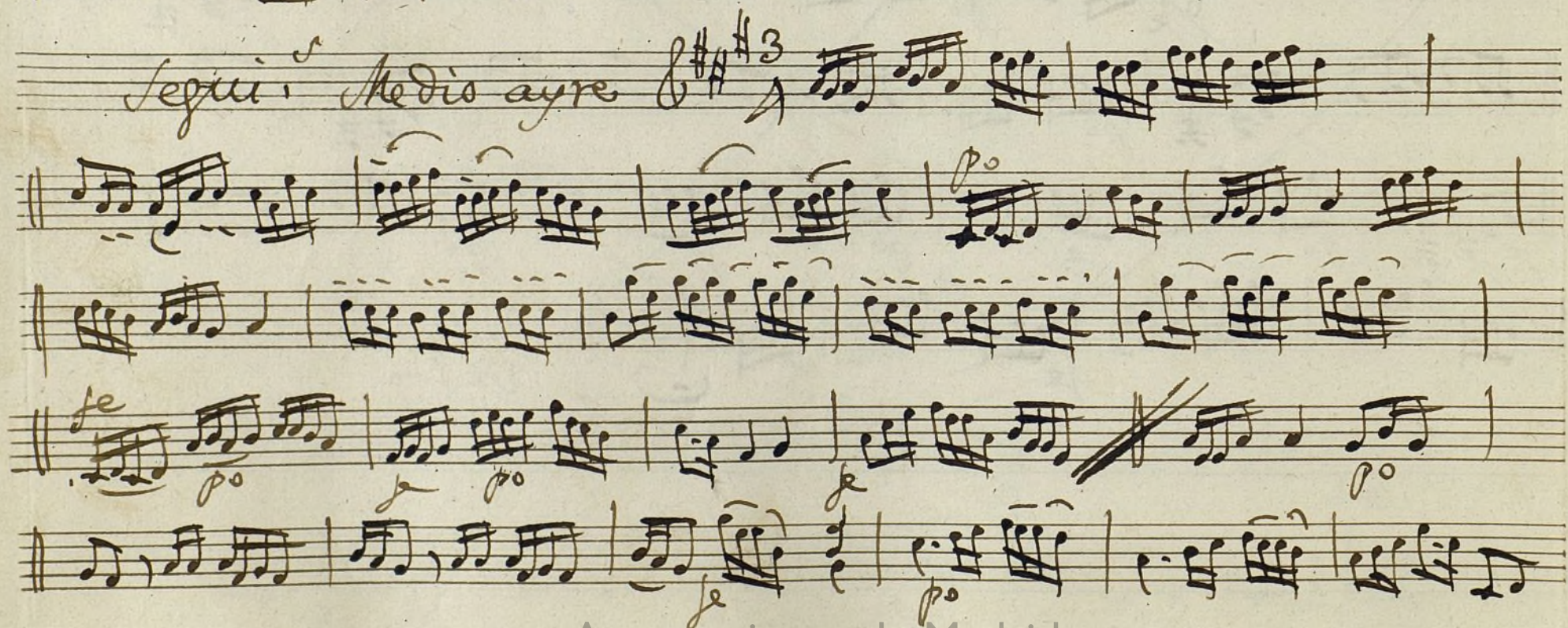
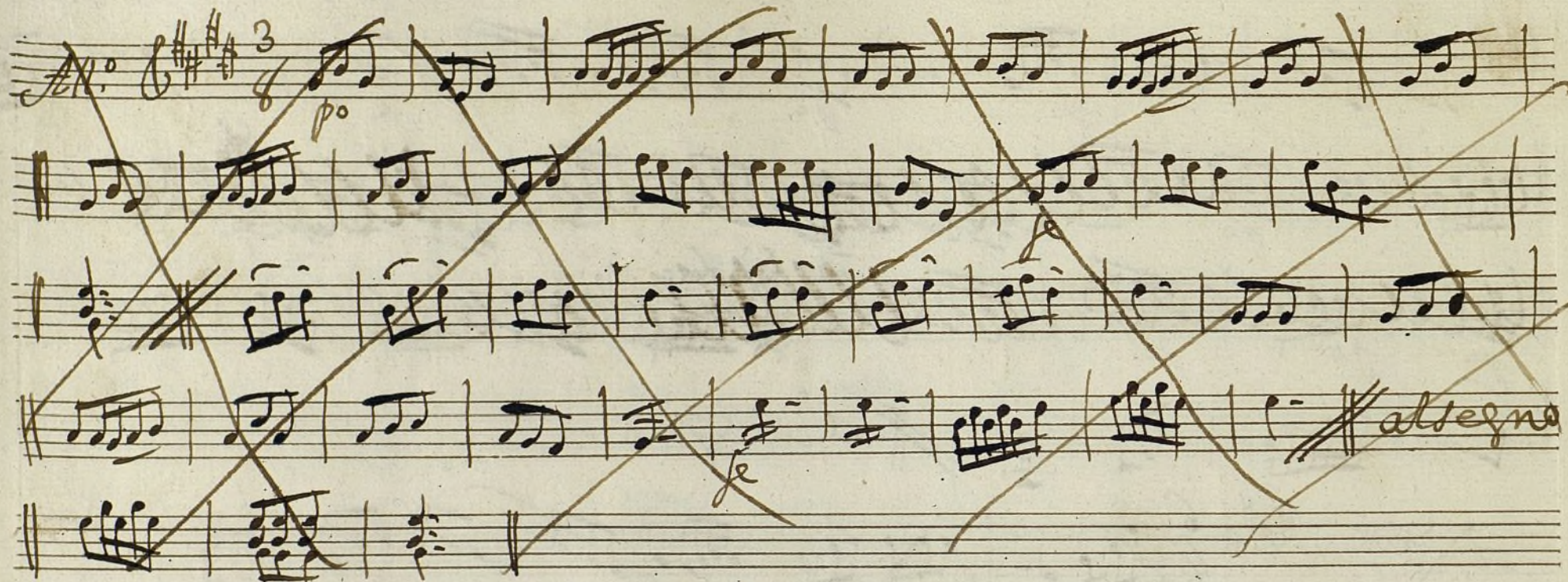


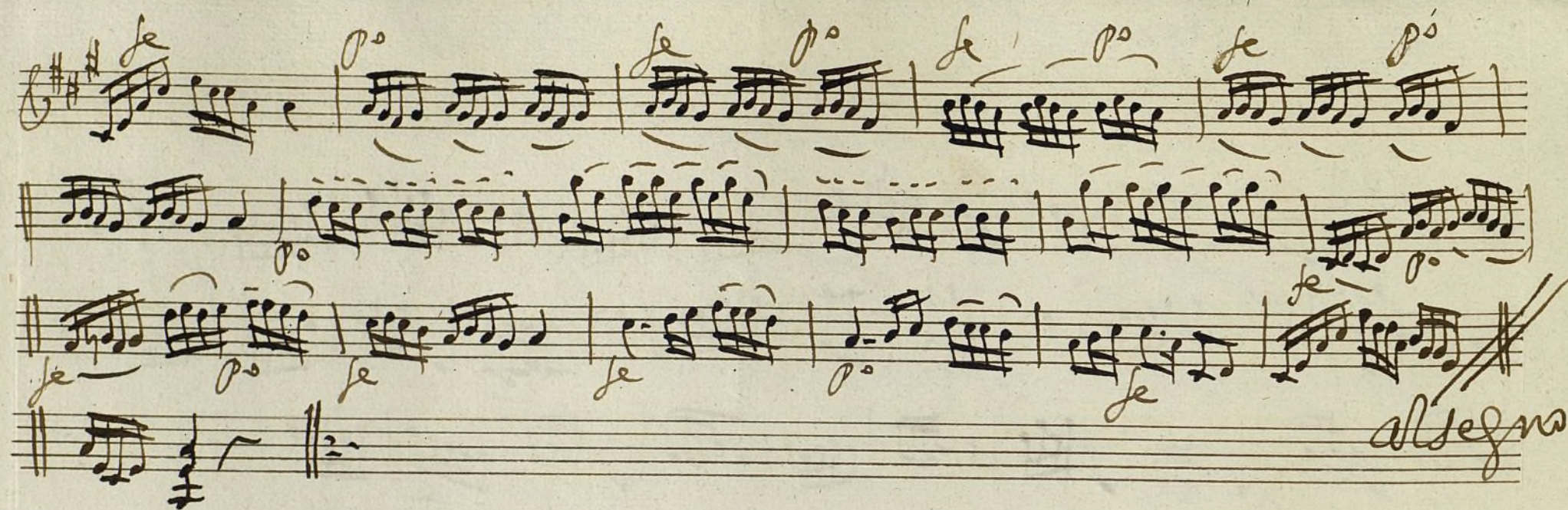
Violin Segundo.

Sonadilla à solo;

Handwritten musical score for Violin Second, titled "Sonadilla à solo;". The score is written on ten staves. The key signature is two sharps (F# and C#), and the time signature is 3/8. The notation includes various musical symbols such as notes, rests, and dynamic markings like *pp* (pianissimo) and *fe* (forte). The score is written in a cursive, handwritten style.

Handwritten musical score on aged paper. The score consists of ten staves. The first staff is in treble clef with a key signature of three sharps (F#, C#, G#). It contains several measures of music with notes and rests. The second and third staves are heavily crossed out with a large 'X' and contain dense, illegible handwriting. The fourth staff begins with a double bar line and the word *allegro* written in a cursive hand. The fifth, sixth, seventh, eighth, and ninth staves are also crossed out with a large 'X' and contain dense, illegible handwriting. The tenth staff begins with a double bar line and the word *vogli* written in a cursive hand. The paper shows signs of age, including yellowing and some staining.





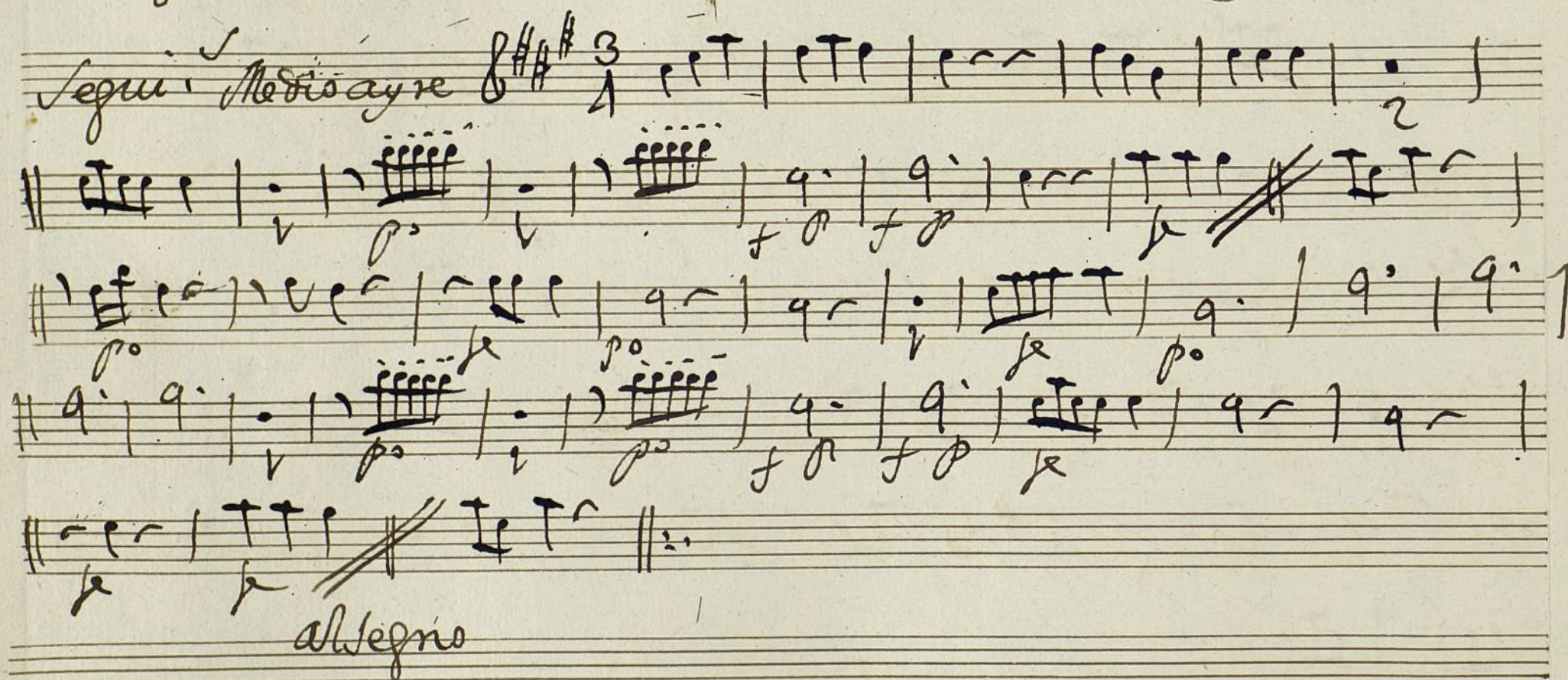
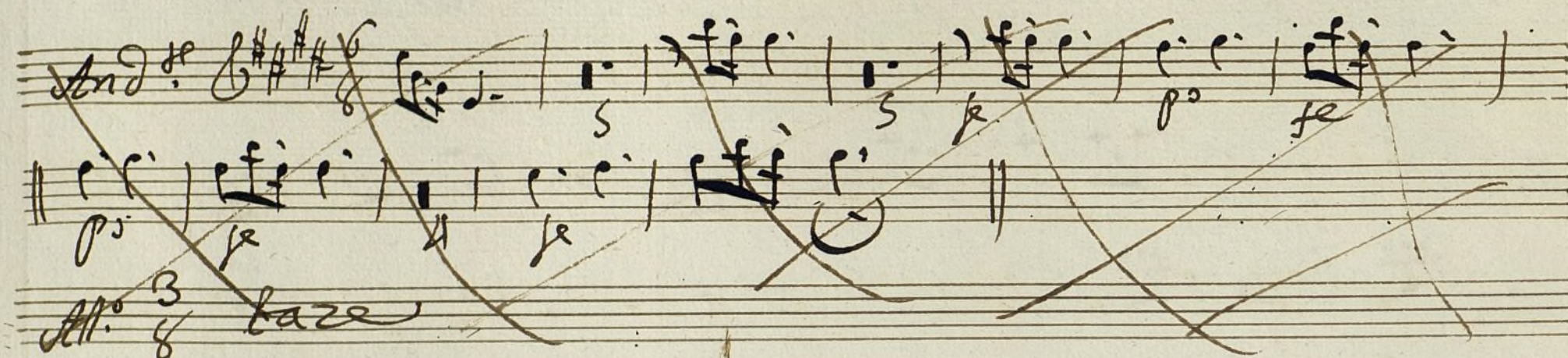
o boe Primero

MUS 110-4

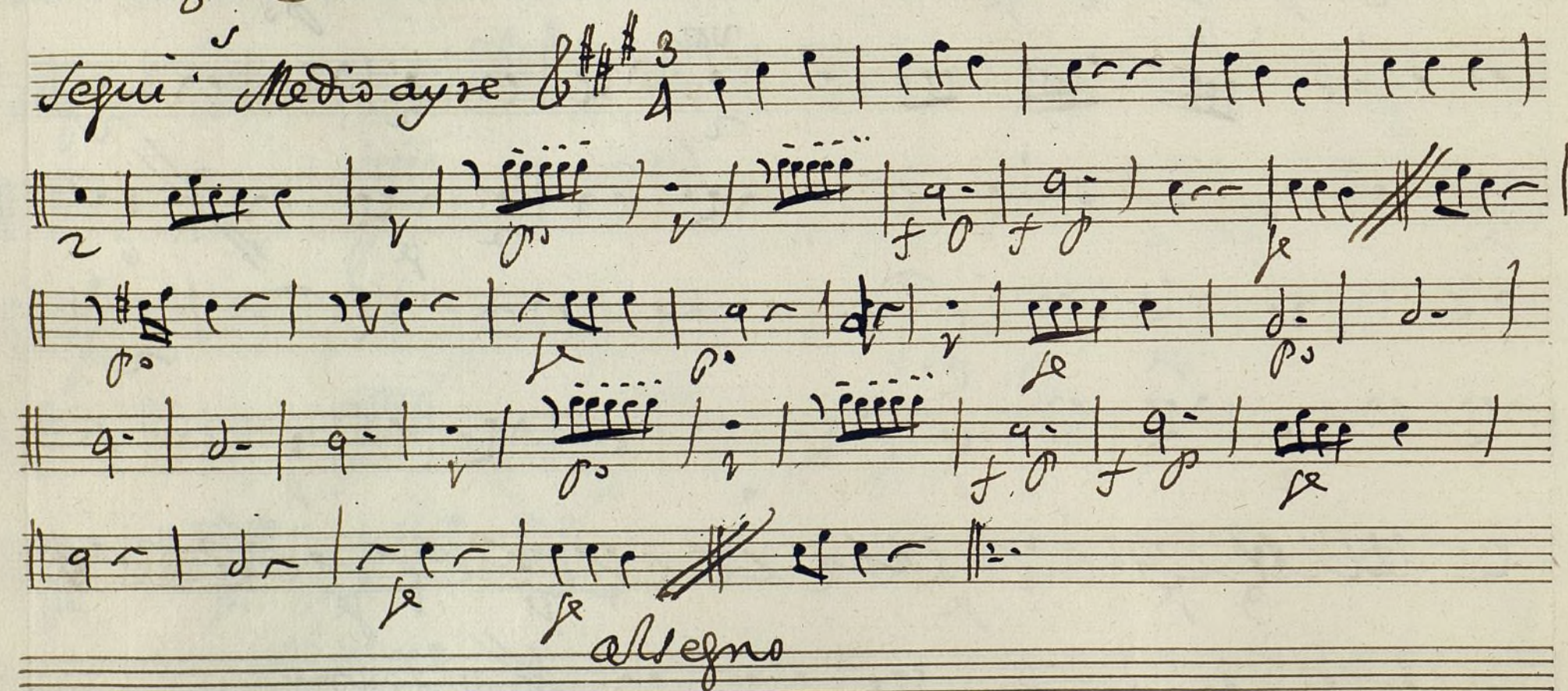
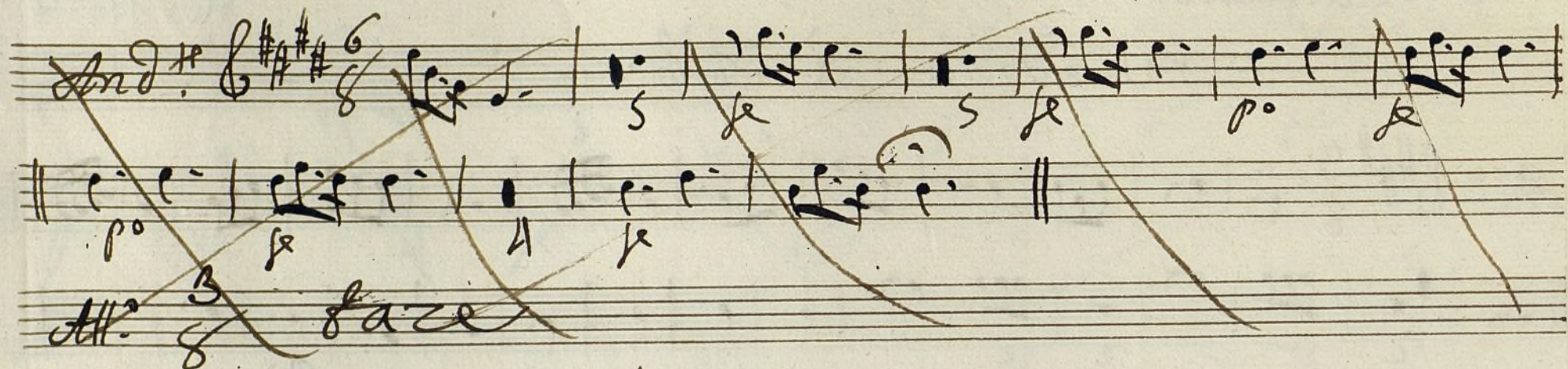
bona dilla à solo;

Handwritten musical score for a solo piece, titled "o boe Primero bona dilla à solo;". The score is written on ten staves. The first staff is marked "Al: 3/8" and features a treble clef with a key signature of one sharp (F#). The notation includes various rhythmic values, including eighth and sixteenth notes, and rests. Dynamics such as *f* (forte) and *p* (piano) are indicated throughout. The score includes several measures of complex, rapid passages, some of which are crossed out with diagonal lines. The piece concludes with the instruction "al segno" written below the final staff.

volte



allegro



Trompa Primera

+

Mus 110-4

Sonadilla à solo;

Indela

All.^o $\text{D}^{\flat}\text{F}\text{A}$ $\frac{3}{8}$

A po se

vol

allegro

vol

In el ami

And. $\text{D}=\text{F}\#\text{A}\#$ $\frac{6}{8}$

Handwritten musical score for 'In el ami'. It consists of three staves. The first staff is marked 'And.' and has a key signature of three sharps (F#, C#, G#) and a 6/8 time signature. The music is written in a single melodic line with various note values and rests. The second staff continues the melody. The third staff is marked 'Allegro' and contains the word 'baze' followed by a double bar line. The entire section is crossed out with a large 'X'.

Segui. Medio ayre $\text{D}=\text{F}\#\text{A}\#$ $\frac{3}{4}$

Handwritten musical score for 'Segui. Medio ayre'. It consists of six staves. The first staff is marked 'Segui.' and has a key signature of three sharps (F#, C#, G#) and a 3/4 time signature. The music is written in a single melodic line with various note values and rests. The second staff continues the melody. The third staff contains a section marked with a double bar line and a sharp sign. The fourth staff continues the melody. The fifth staff continues the melody. The sixth staff continues the melody and ends with a double bar line. The word 'allegro' is written at the end of the sixth staff.

trumpá segunda

+

Mus 110-4

tonadilla à solo;

Indela

Handwritten musical score for a trumpet solo. The score is written on ten staves. The first staff begins with the tempo marking "Allo." and the key signature of one sharp (F#). The music is in 3/4 time. The notation includes various musical symbols such as notes, rests, and dynamic markings like "p" (piano) and "f" (forte). The score concludes with the instruction "allegro" and the signature "Volte".

In elami

And.^{te} 6/8

Handwritten musical score for 'In elami'. The first system consists of two staves. The top staff begins with a treble clef, a key signature of two sharps (F# and C#), and a 6/8 time signature. The music is marked 'And.^{te}'. The bottom staff continues the melody. The second system also consists of two staves, with the top staff continuing the melody and the bottom staff providing a harmonic accompaniment. The piece concludes with a double bar line. The entire section is crossed out with a large, diagonal brown line.

Segu. Medio ayre 3/4

Handwritten musical score for 'Segu. Medio ayre'. The first system consists of two staves. The top staff begins with a treble clef, a key signature of two sharps (F# and C#), and a 3/4 time signature. The music is marked 'Segu. Medio ayre'. The bottom staff continues the melody. The second system also consists of two staves, with the top staff continuing the melody and the bottom staff providing a harmonic accompaniment. The piece concludes with a double bar line. The entire section is crossed out with a large, diagonal brown line.

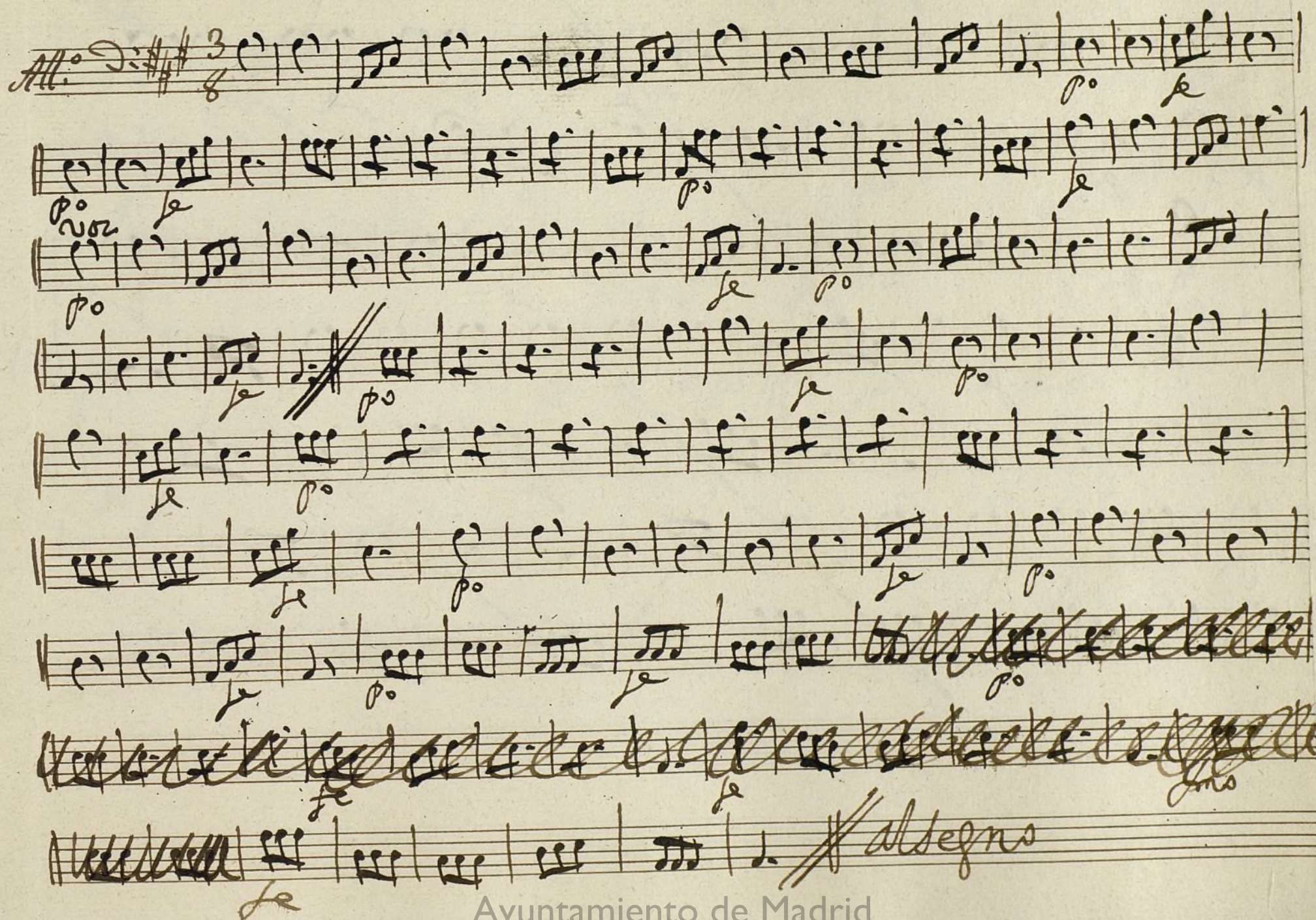
Contrabajo;

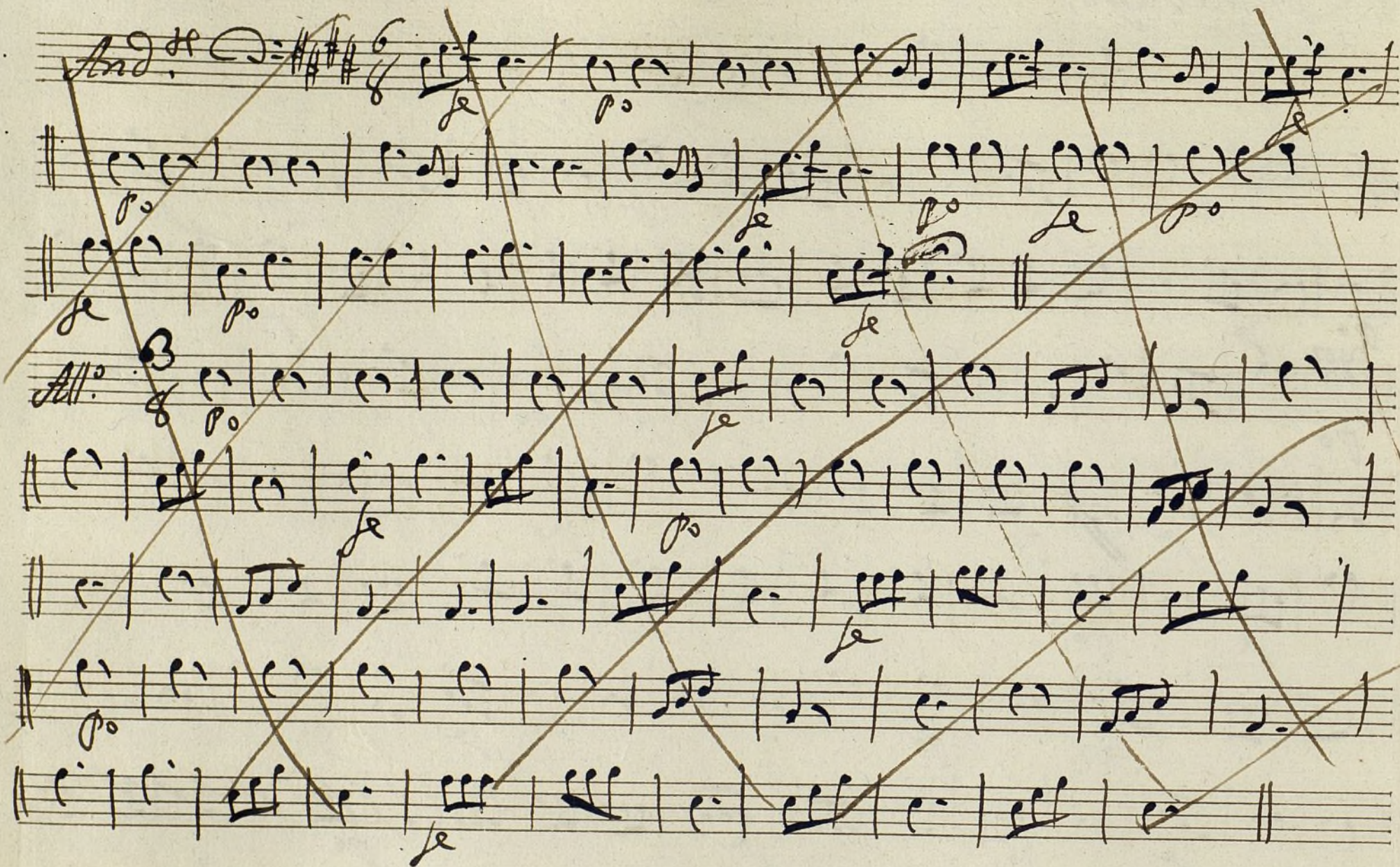
+

MUS 110-4

tonadilla a solo;

Handwritten musical score for Contrabajo (Double Bass), titled "tonadilla a solo;". The score is written on ten staves, featuring a key signature of one sharp (F#) and a 3/8 time signature. The notation includes various musical symbols such as notes, rests, and dynamic markings like *p* (piano) and *f* (forte). The piece concludes with a double bar line and the instruction "allegro".





Segu. Medio Ayre $\text{D}=\text{F}\#\text{F}\#$ $\frac{3}{4}$

allegro

