

MUS 113-15

El barquillero.

Tuscullo a dno.

apto ms.

Partitura.

violín 1^o

violín 2^o

violín 2^o

Trompa 1^o

Trompa 2^a

Flauto 1^o

Flauto 2^a

Bojo.

113-15

+

Conadilla à Duo

Del Barquillero;

//

1.^a Raboro, y Ferrido:.

All.^o $\frac{3}{8}$

Barquillero

Con mi Aguas y mi traje Ces ta en el brazo
que dis tinto Madrieras quando en tu Prado

Cesta en el brazo avender mis Barquillos vengo a cia el
Quando en tu Prado Con Un Cuarto e Barquillos sea cia el
Prado aven
gas to Con Un
no ay q^{ra} Name señores al Varquillero
en ton ces ocho Cuartos eran di nero

que por Paseo y Calles dice con lento
por que no abia Escofetas ni Peluqueros

que por
por que

2 *Desp.*
4 Varguilio
Varguilio

el Varguiliéro;

3 *All.*
4

2 *Desp.*
4

3 *All.*
4

ayre y mas ayre No y mas Vio — q.^a mi morena
oro y mas oro ele y mas ele — que mi morena

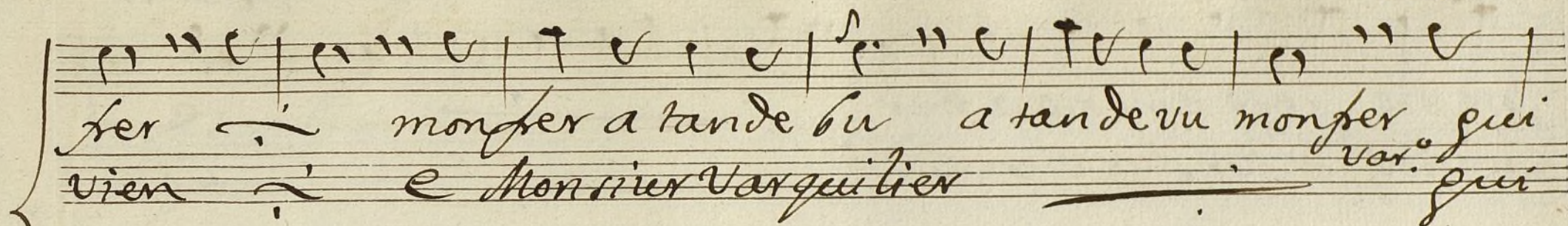
aun no a benido — aen se tener se un Vato a qui con
tardar no puede — es Una Naranjera tan de chu

migo — y Tugar Una mano o Cuatro o Cinco —
pere — que le Rechupa el Alma al que la quiere

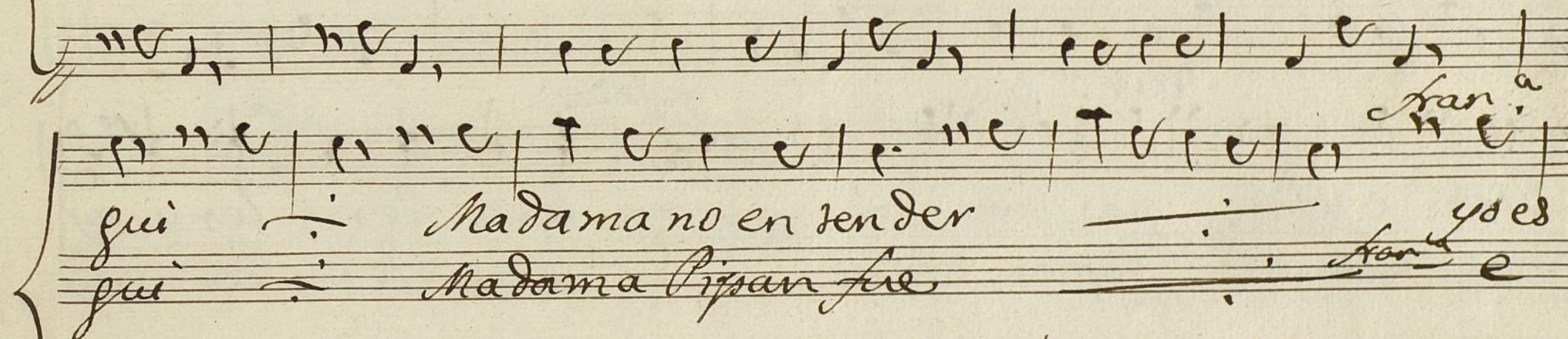
*o Cuatro o Cinco -
al que la quiere -*

Allegro

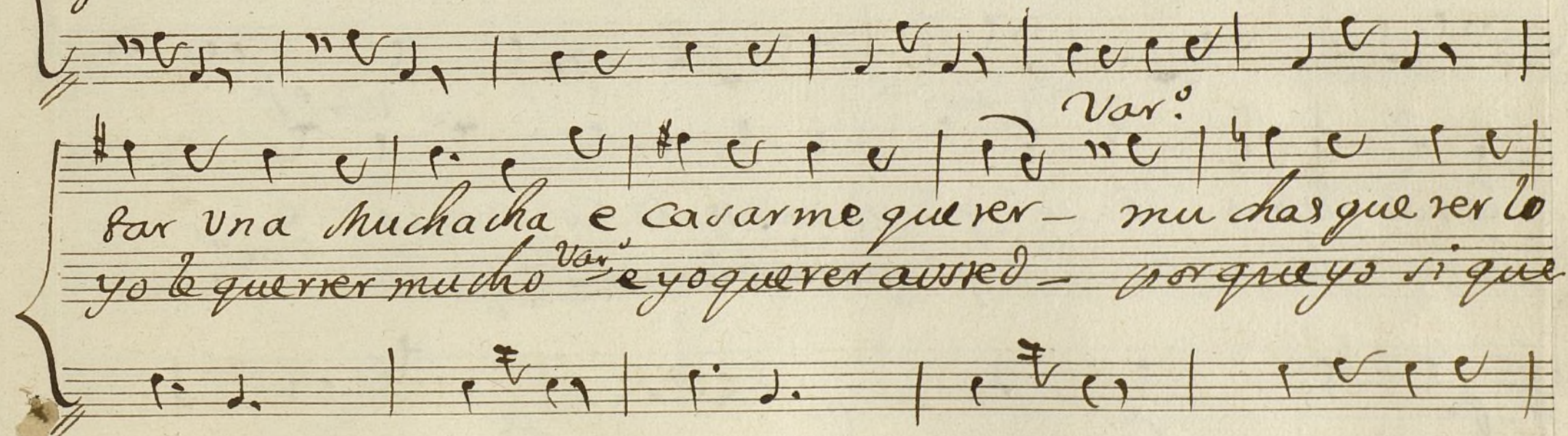
*francese.
Non
e*



ser monser a tande bu a tande vu monser qui
vien e Monsieur Varguilier



qui Madame no en tender
qui Madame Pissan fue



far una Muchacha e casarme quer- mu has quer lo
yo e querrier mucho e yo querrier austed - porque yo si que

propio pero amino aber
 Cuando Monsieur vien obliè

Vien e vien masque
 man Coman Comer elque

ay loru loru loru ay
 loru loru le - q.º y oavste lo co no co, e
 loru loru le - q.º y ohablaravste quiers - va

San^a.

Var^o.

musica tambien avise, q^{ue} v^{os}te es tar un Real mozo, y v^{os}te Imperial mu
ya pue^{ra} diga v^{os}te, lo^{do} a tencion pue^{ra} a Caro pudiere en tete

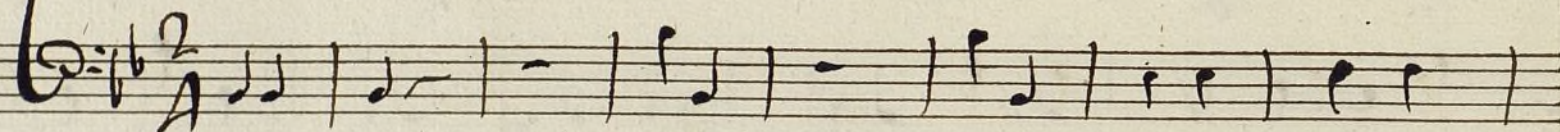
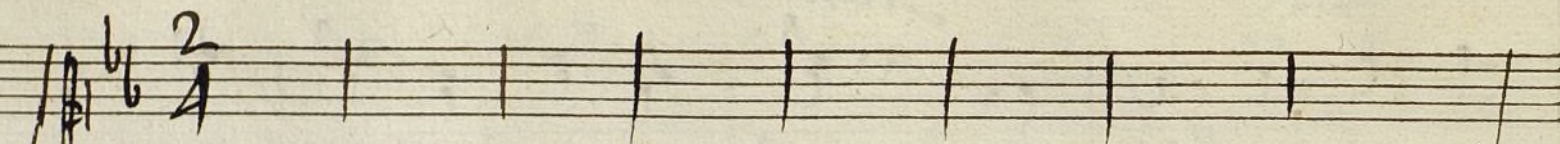
lo^{2o}.
per, ay re ay re ay re (e) ay re ay re ay re
ner, ay re ay re ay re ay re ay re ay re;

~~Allegro~~

allegro

Coplas

All.^o Staccato



fran.^a

Monneur Barquillier Lama
Vus te ser un tanto e se

mar.^o

fran.^a

no do nè te ne bu Madama le le re le re
lo per der eno que rer sea yo la sua Mager

var.^o

fran.^a

tene ou Madama te le te le re y o e s t a r m u i m u c h a c h a
e n o q u e r e r s e a y o l a s u a m u j e r s i c a s a r c o n m i g o

var.^o

e c a s a r q u e r e r ~~e p e i n a r l e y o a l t o a l o p a r i~~
m u c h o t e q u e r e r ~~u n d e~~ p u e s s i t e n e r n o b i s e r o f a c i l
e p e i n a r l e y o a l t o a l o p a r i

fran.^a

~~sien~~ es V o s e s t a r m u c h a c h o m u a m u c h a c h a s e r - e l o s d o s c a
~~var.^o~~ Madama d e m o n i o R e t i r e s e v r e d - q u a n q u i e n
s i e n -

Var.^ofran^aVar.^o

sarnos nani pa mo sie

e perque me diga

esuche los

lo apa pero ala te ley

Conque vire no quiere

e per q.^o oiga wAnd.^{no}
3.

ted;

so - mos los Españoles tan faras piezas

ted;

~~Con un español~~ Con un español

Ca sar una de sudes

tan faras piezas

q.^o nos dei Cua ji

yasi baya vsted

q.^o mai vale un por

Con un español

es querer a la

fran^a mirre que tacha

Con lo templado

ramos — Con las franjas — y —
vida — q' un bien obli — por —
Nieve — Juntar con el sol — por —
sehaze — las con sonancias — y —

nos dejan e la dos sus — ve ve ren cias —
que este deja e la do yen ren di do a quel —
que ellas todo el yelo ye — No todo ar dor —
sehacer e co fieras y — Cor tar Basas —

g' tal seño re, no bá me bien, pue si le
fran. J. Vaya que dize var. g' muy oí, fran. pue et o a

allegro

Var.^o *1^{da}*

gusta, pro require, chiso si lencio
cabe, a lon a lon, requi dillitas *oyd*

a sen ded
sea cabo

D.C.

Segu.^o *All.^o*

es cuchadiora

grada — mis Mosqueros —

mis Mosqueros q.^o siguen la franzera y el Varguillero, q.^o si

que la franzera y el Varguillero; *San^a* yo gustar de

Var^o macos e de Maca andar y puerta de Maja dime

San^a Como aráy; (aii) *Moderado* tomare mi Zicarro toma

re mi zi' carro, y Con sa l'erro, le dire' al q.^o me gust' se le di

var.^o
~~ar don~~
 area Ma nue lo; (bueno bueno, vera, yo de

gavacho Como lo a zierro) mu lar chera y chilo, mu

fran.^o All.^o Var.^o
 lar chera y chilo, Vravo Vravo de jeme v'ite entrar

All.^o
 la la ra la ra la la la ra la ra la la ra la ra la

la la ra la ra; Viva viva la y dea

si llega a agradar

allegro

Ayuntamiento de Madrid

Mus 113-15

Violin Prim.^o

Tomadilla a Dna; el Barquillero

Handwritten musical score on ten staves, featuring complex rhythmic patterns and dynamic markings. The notation includes treble clefs, key signatures of one sharp (F#), and various time signatures (3/4, 4/4, 3/8). The score is marked with *Allegro* at the beginning and *Depo* (likely *Adagio*) in the middle. Dynamic markings such as *f* (forte) and *p* (piano) are present throughout. The manuscript shows signs of age, including ink bleed-through and a small insect damage mark on the seventh staff.

Key markings and annotations include:

- Allegro* (top left)
- Depo* (middle right)
- f* (forte) and *p* (piano) dynamic markings
- Accents (*>*) over several notes
- Trills and triplets (indicated by a '3')

A watermark at the bottom center reads: Ayuntamiento de Madrid

Handwritten musical score for a piece titled "Allegretto" by Ludwig van Beethoven. The score is written on eight staves, with the first staff containing the tempo marking "Allegretto" and the second staff containing the tempo marking "And.te". The key signature is one sharp (F#) and the time signature is 6/8. The score includes various dynamic markings such as *p*, *f*, *pp*, *ff*, *se*, *le*, *po*, *primo*, and *vo*. The notation includes treble clefs, notes, rests, and bar lines. The piece concludes with the marking "Allegretto" and a double bar line.

Voln Pto

[illegible]

Al Segno.

Ayuntamiento de Madrid

Violin Secondo. Ton.^a à Duo;

el Barquillero;

Mus 113-15

Handwritten musical score for Violin Secondo, featuring ten staves of music. The notation includes treble clefs, a key signature of one sharp (F#), and a 3/4 time signature. The music consists of various rhythmic patterns, including eighth and sixteenth notes, and rests. A dynamic marking "Dopp." is visible on the seventh staff, and "Allegro" is written on the eighth staff. The score concludes with a double bar line and the word "Allegro" written across the final staff.

And.^{te} *se po*
vor po
Le po
mo
Allegro.

Coplas All.^o

Handwritten musical score on ten staves. The notation includes various musical symbols such as clefs, key signatures (two flats), time signatures (3/4, 6/8), and dynamic markings like "And. no" and "Allo". The music features complex rhythmic patterns, including triplets and sixteenth-note runs. The final staff contains the instruction "D.C. al 2" and "Vlti pto".

Soprano. All.^o

Mod.^{to}

Dep.^o

Alleg.^{ro}

arpexio

flauti soli.

A Scono.

Violin Segundo. ton.^a a Duo; el Barquillero;

Mus. 113-15

Handwritten musical score for Violin Segundo, titled "ton.^a a Duo; el Barquillero;". The score consists of ten staves of music in G major (one sharp) and 3/4 time. The notation includes various musical symbols such as treble clefs, key signatures, time signatures, and dynamic markings like "p" (piano), "f" (forte), and "Duo". The music features a mix of eighth and sixteenth notes, often beamed together in groups. There are some corrections and deletions visible, particularly in the first staff and the bottom left. The score concludes with the instruction "Al Seor." and a double bar line.

And.^{te} *te po*

te po *p^{mo}*

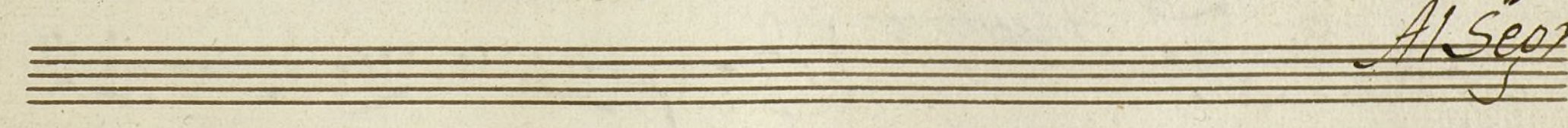
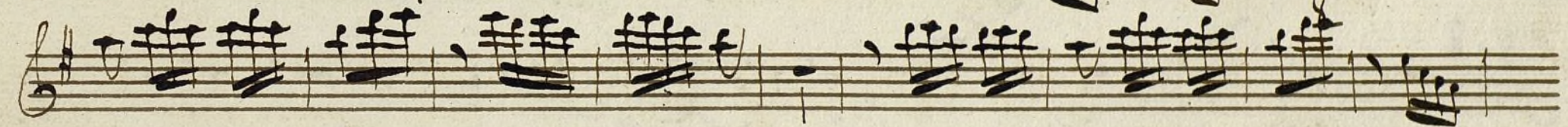
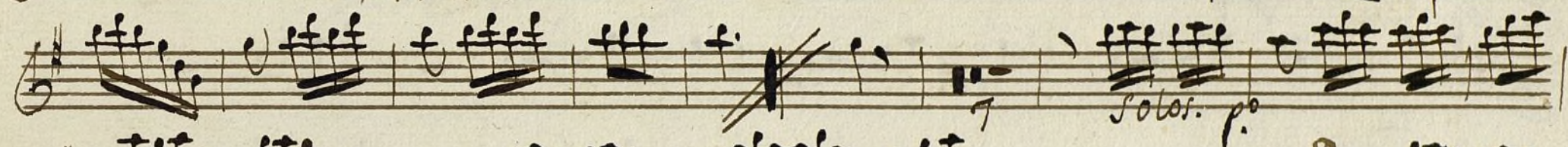
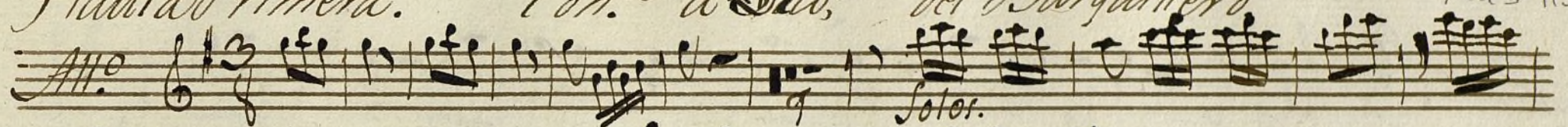
Allegro.

Capla. All.^o

Ayuntamiento de Madrid

Handwritten musical score on ten staves. The notation includes various musical symbols such as clefs, key signatures (two flats), time signatures, and dynamic markings like *Andr.* and *Allo.*. A section of the score is crossed out with heavy ink. The piece concludes with *D.C. al 2* and *Volte p.to*.

Flauta Primera. Ton.^a a D^o; del Barquillero Mus 113-15



And.

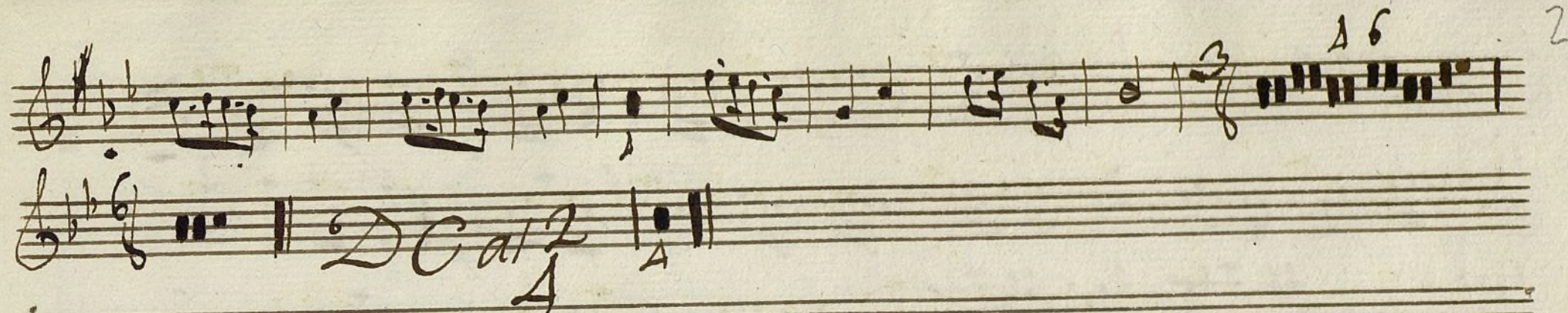
Handwritten musical score for a string quartet, measures 1-10. The music is in G major (one sharp) and 3/4 time. It features a melody in the first violin with a descending line, followed by the second violin, first and second violas, and cellos/double basses. Dynamics include 'p' (piano) and 'f' (forte). There is a double bar line at the end of measure 10.

Allegro.

Coplas de la Virgen

Coplas. All.^o Flautines.

Handwritten musical score for flutes, measures 1-4. The music is in G major (one sharp) and 2/4 time. It features a lively melody in the first flute, followed by the second flute. Dynamics include 'p' (piano) and 'f' (forte). The score ends with a double bar line.



Sequit. ala Vuelta

Segue. All.^o

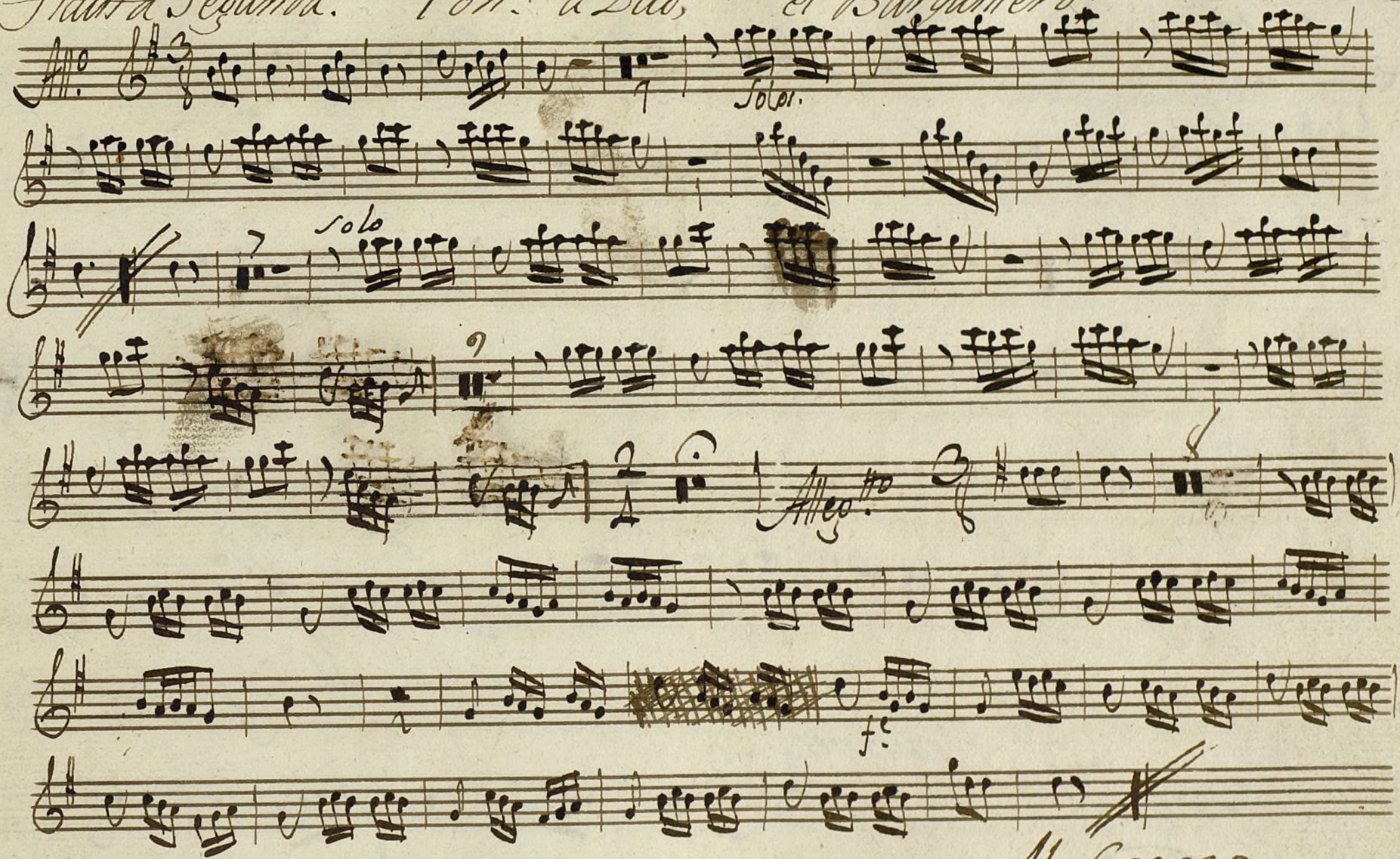
flautin solo.

All.^o

Alleg.^o

Al Segno.

Flauta Segunda. Ton.^a a Duo; el Barquillero. Mus 113-15



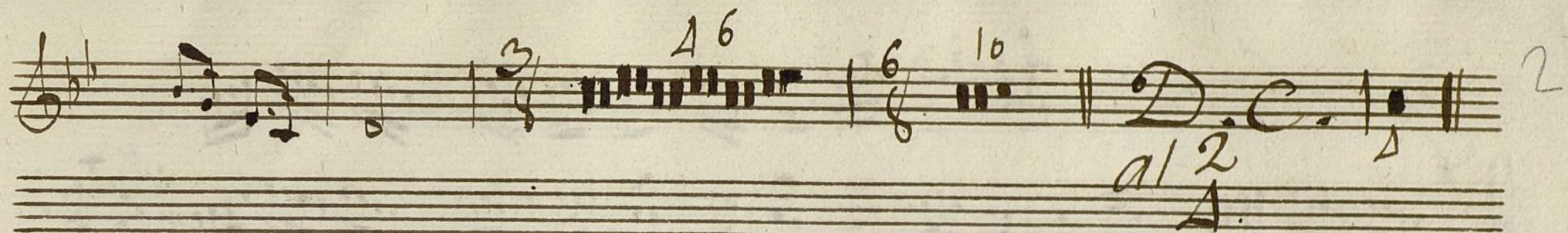
Al Segno

And.

Al Segno.

Copla. And. Flautines.

Solo.



Volti Sequis.

Segue. All.^o

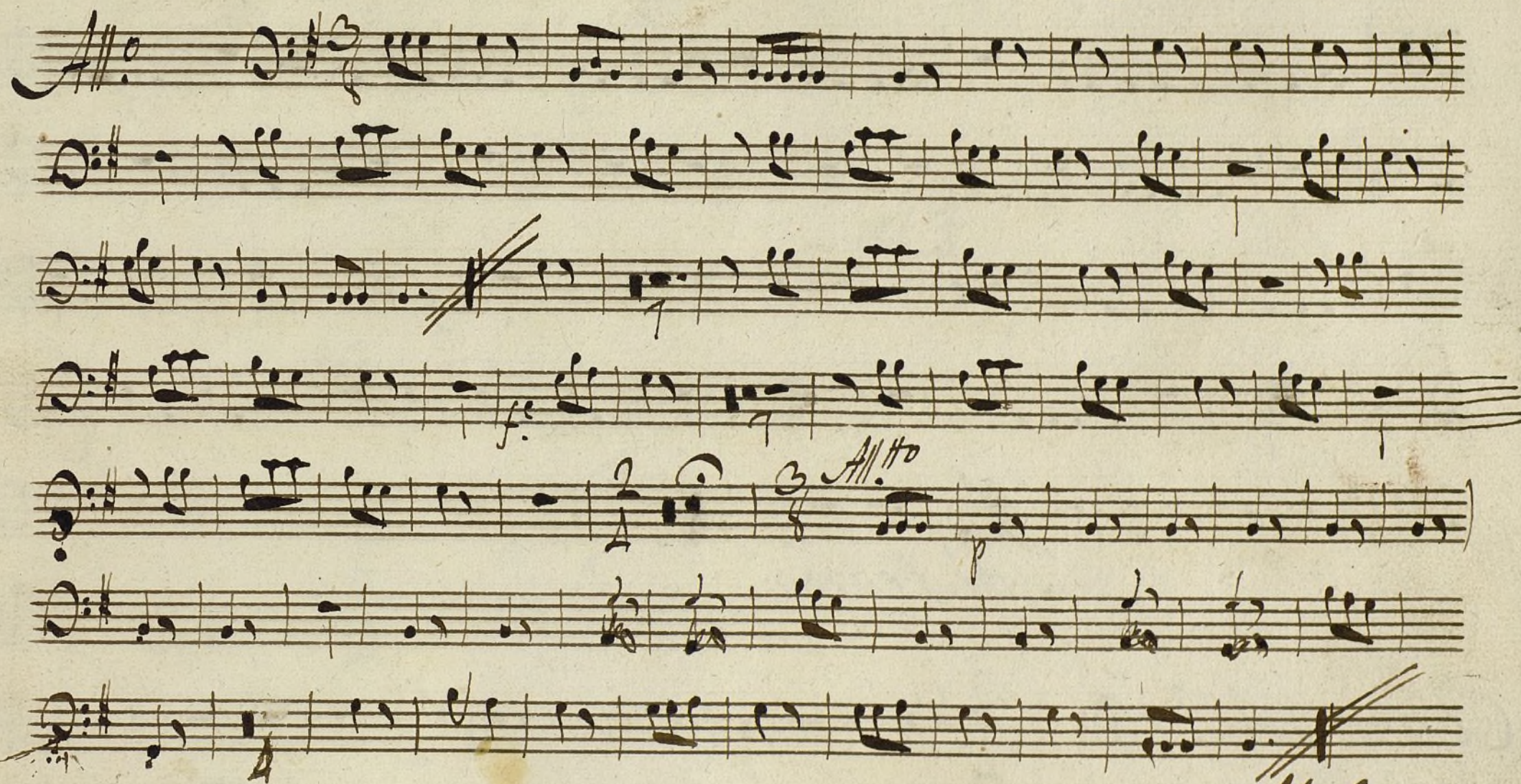
Flautin

Solo.

Solo.

All.

Allegro.

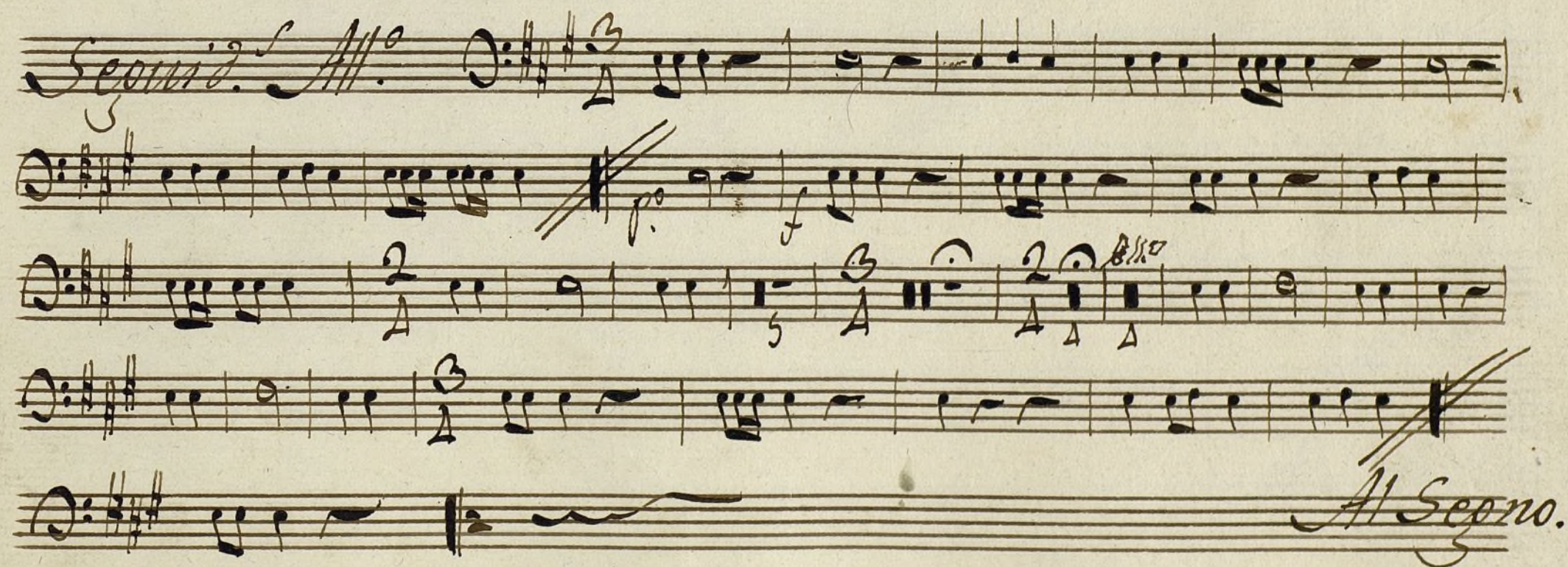
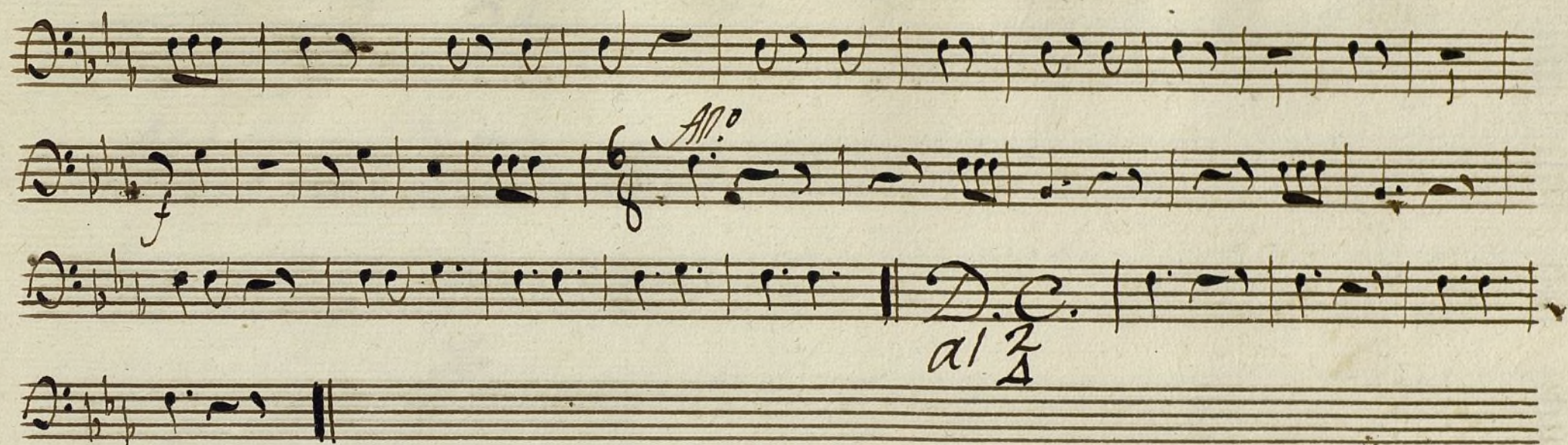
Trompa 1.^a Ton.^a a Duo; et Baguitero.*Al Seono.*

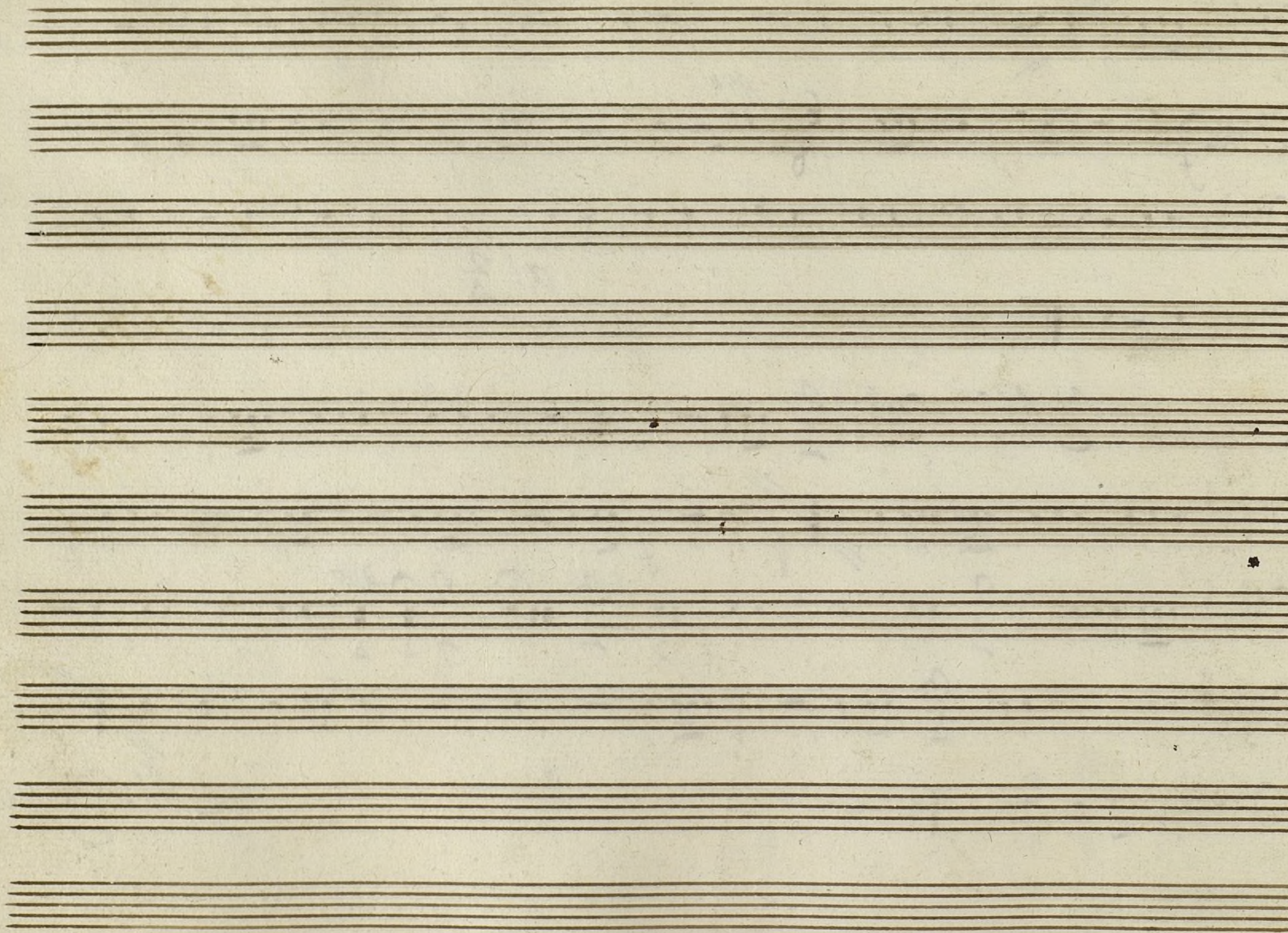
And.^{te}

Allegro

Capta All.^o

All.^o



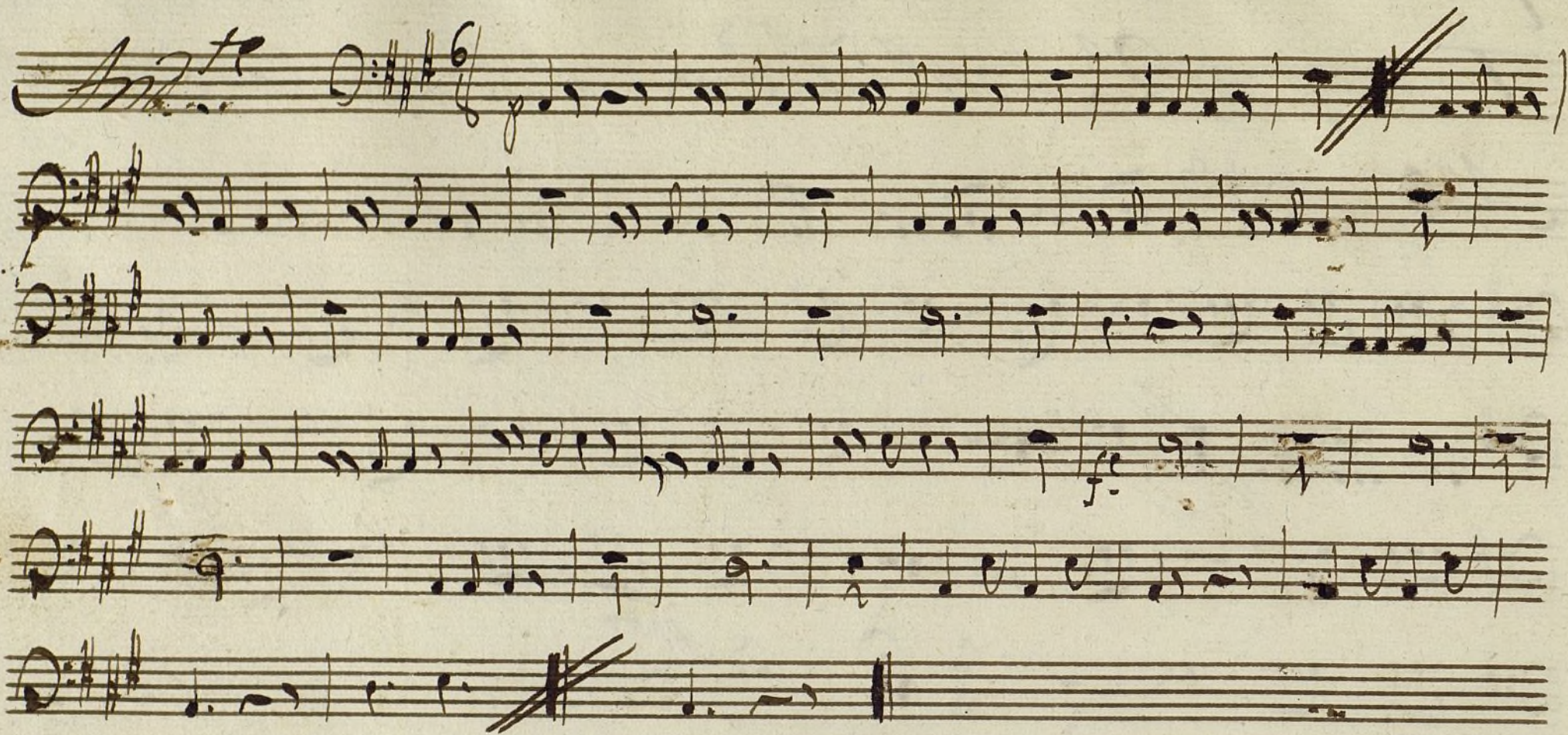


Ayuntamiento de Madrid

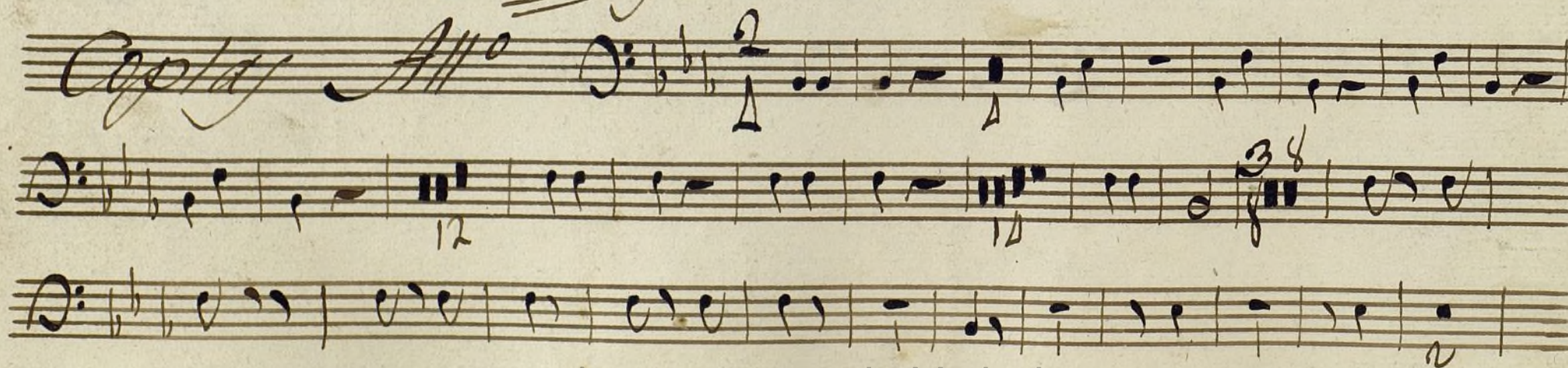
1
Trompa 2.^a ton.^a a Duo; el Barguillero;

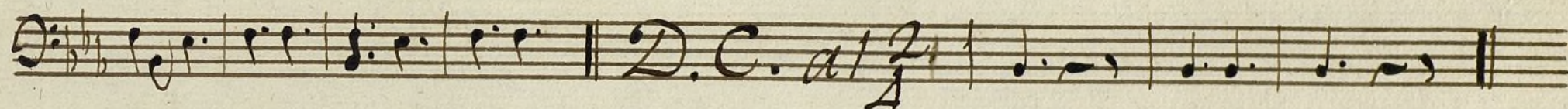
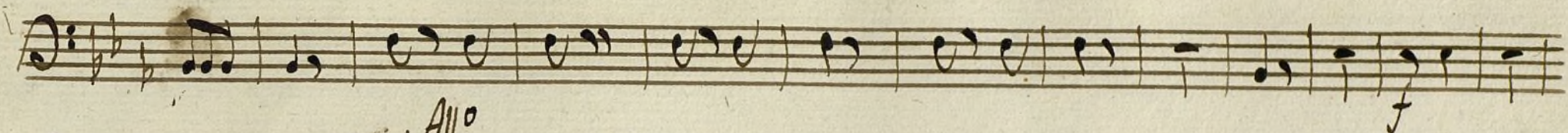
Handwritten musical score for Trompa 2.^a in G major, 3/4 time. The score consists of eight staves. The first staff begins with a treble clef, a key signature of one sharp (F#), and a 3/4 time signature. The music is written in a single melodic line. The notation includes various note values, rests, and dynamic markings. A double bar line with repeat dots appears after the fourth staff. The piece concludes with a final double bar line and repeat dots on the eighth staff.

Al Sepno.

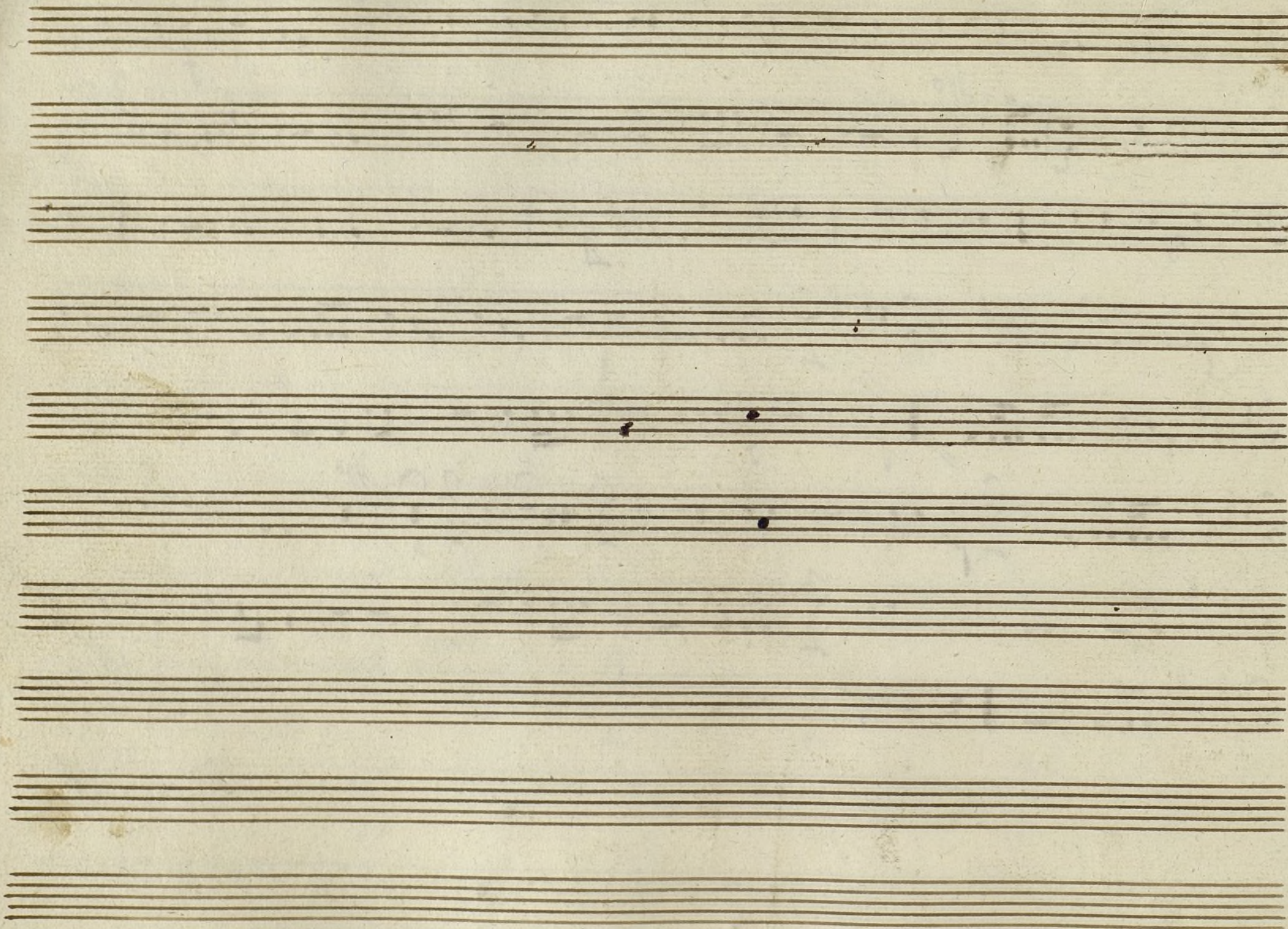


Allegro.





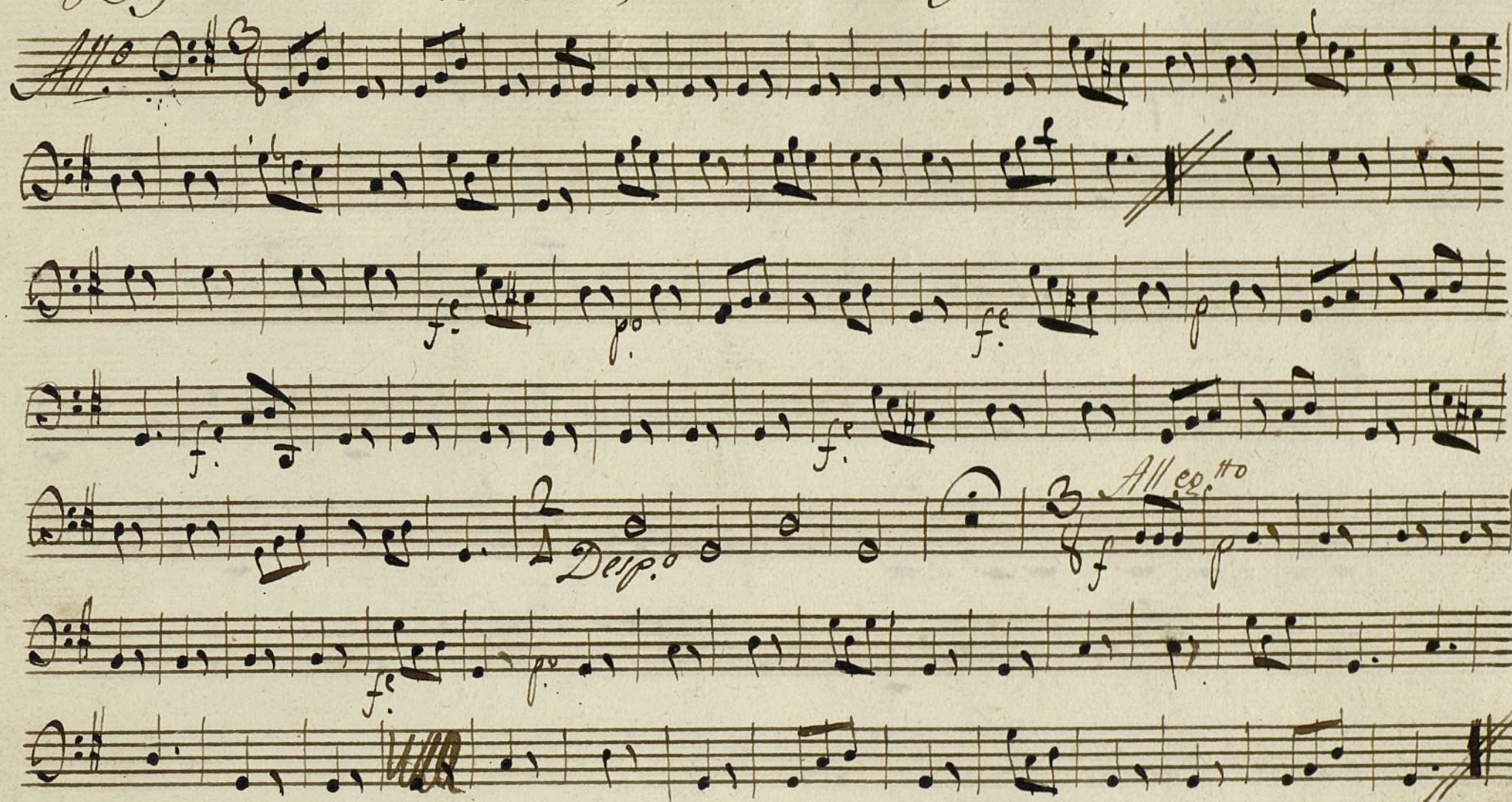
Allegro



Ayuntamiento de Madrid

Bayo. ton.^o a Duo. el Barquillero.

Mus 113-15

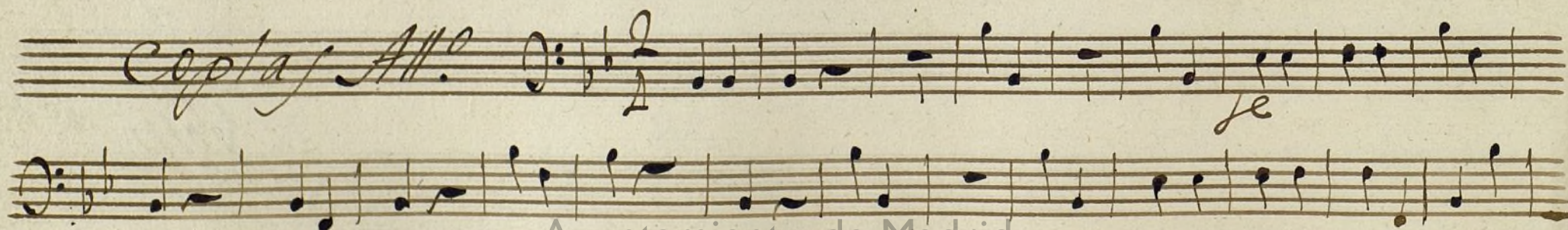


Al Segno.

Volt. p.º

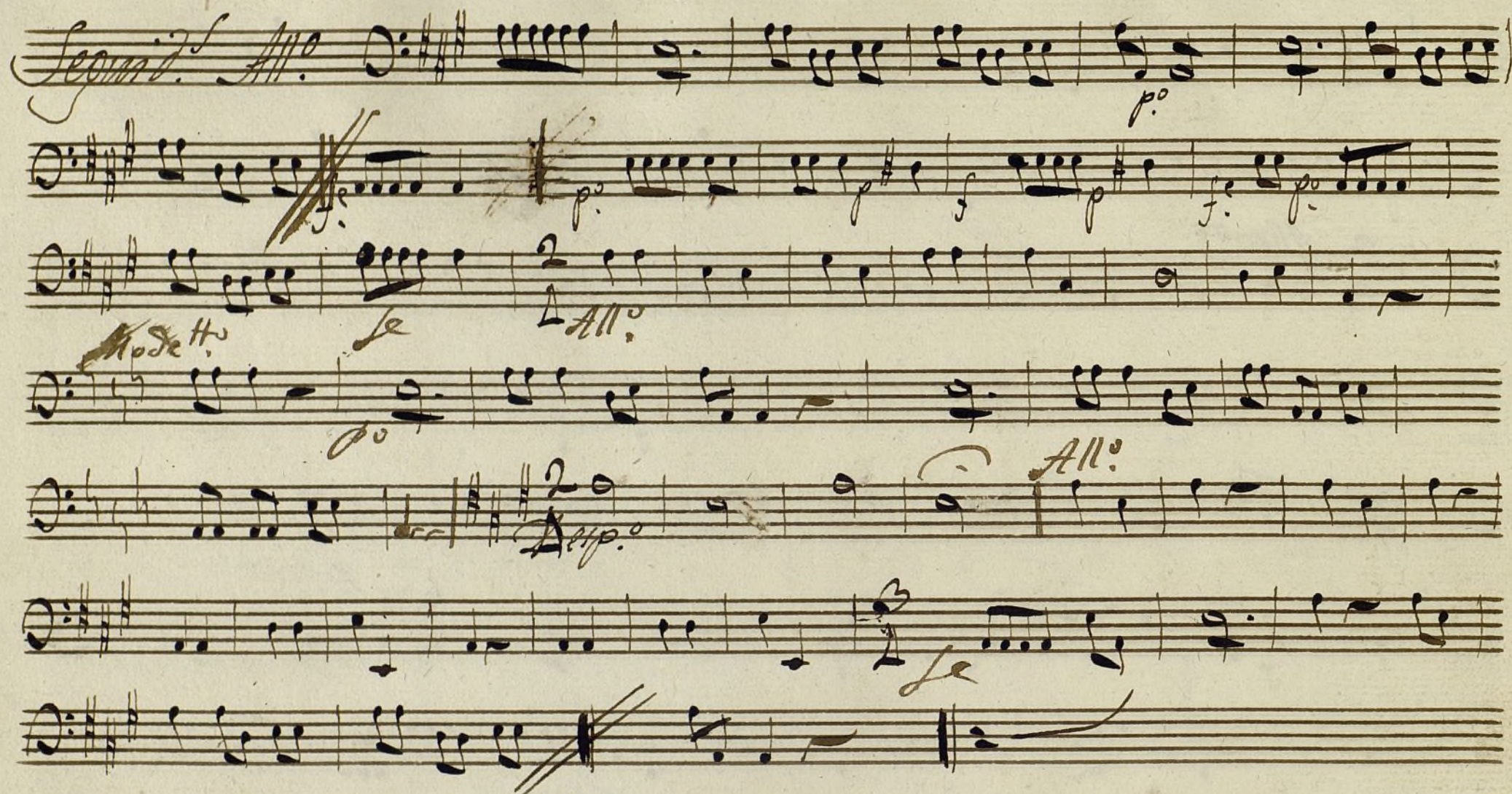


Al Sepno.



Handwritten musical score on eight staves. The notation includes various note values, rests, and dynamic markings. The first staff begins with a treble clef and a key signature of one flat. The third staff is marked *Allegro* and features a 3/4 time signature. The sixth staff has a '6' above it. The seventh staff is marked *fmo*. The eighth staff begins with a double bar line, followed by *D.C.* and *al 2/4*.

Volto pto



Al Segno.