

Leg. 11.º N.º 22.

Mus. 105-10

✶

Conadilla a Duo

De la Estera fina, y Aguadilla Maya

~~De la Estera fina~~ Leg. 11.º N.º 25
son carralera %

Del Sr. Rosales %

+

All^o.

2/4

Valenciano

Voi por esas Calles
dejaré este ofizio

po

di ciendo Con gerga es te ri ta fina texi da en Va
pues que no se ga na ya ven der me pon go Agua fres qui

lencia es rita fina texida en Valencia
ta agua ya vender me pongo Aguatresquita agua

Compran el tra fina) pero emos venido tantos a la
el caso es que este año segun el tiem

feria que ya corrompemos la circunferen
po anda no ay de refrescarre ne cesidad tan

cia y aunque mas por fiamos al que se pre sienta
ta mas anem y beamos que tal que se gana

es Taro el que quiere mamar la Zivuela
A Don Cavalleros hasta al travega da

allegro

Son carralera

And.^{te}

En mi lugar me

llaman

la Jitani ta

la Jitani ta porque soi algun
no se ries cierto pero dize el
a Comprar vengan que los deos se

poco ves a la y ta, y que quaguis Jeroma mi-raque
dagio que voz de el Pueblo, Reguiones baratos ven go ben
Chupa el que los prueba Reguiones baratos ven go ben

ta cha a pu ra i ta men te e - sa e la gra cia
 di en do pa ra los pa i sa ni tos y - fo ra s te ros
 di en do pa ra los pa i sa ni tos y - fo ra s te ros

por que soi por que soi al gun po co ve sa la y ta
 pa ra los pa ra los pa i sa ni tos y fo ra s te ros
 pa ra los pa ra los pa i sa ni tos y fo ra s te ros

allegro

All.^o

3

4

fonc.^a Valenciana

Aguador zi to do no — so

Valen.^o

fon.^a

fon carra lera de el alma

e chame de agua un ba

Valen.^o

fon.^a

si — to — en pagando sueltan chaíra lxxxv

a guacado de maya

Valen.^o

fonc.^a

quesoi; cabriote que lo puedo ser;

madame

pareces un poco chus

Valen.^o *fon.^a*
 — co y tu pa re zes de mi alma que apue stas

Valen.^o
 que se la. pe — go a quien antes se la clava.

fon.^a *Valen.^o* *fon.^a*
 a que ca do que ma ja que so; Ca bri o le que to pue do ser
 tu rron, ma ran zas sien ta te a qui un po

sien ta te a qui un po qui to pren da de el alma
 qui to pren da de el alma ve re mos

Vere mos quien pri mero Cae en la
quien pri mero ca e en la trampa

trampa Cae
Cae en la tram - pa Cae en la

trampa

Coplas

Allegretto

fon carra . a po

fe

As de sa ver vi da mia Como au
dixo pues el Zirujano que aque
ya que la a bia Cu rado para

na Cierta muchacha la sa lio un lunar ma ligo a quén
No era pa ra rara y Con vnos parche zitos que da
que sea se gu rara la dixo ~~cada~~ ^{queen} un es pe jo que des

medio de la Cara llamó pues al Ziruano

ría al punto sana la fue poniendo mil parches
pacio se mirara Valen? Jesus que diablo tan feo

para que se le curara y el Ziruano pri
de las cosas que llevava ya en la frente ya en las
el Demonio lleve tu alma, que solo tu ardid pu

mero la sento mui bien la Cara; tu pre
zas ya al fin entoda la Cara; que se
diera aun Valenciano pegarla; fonca? con que

ten des en bro marme y no se saldra la traza
a que que da ría que Demonio de tarasca
te das por ven zido ^{Valen} y que me sale a la cara

que estoi con tanto ojo a alerta para ver si me la
es cierto que por no ver la se me tiera un hombre
foncea) pues a vender nuestra hacienda a bus car nues traga

clavas, que linda gra - cia que linda gra -
Beata, que linda gra - cia que linda gra -
nancia vamos a ca sa vamos a ca -

allegro

Sequi. All.

A la ora de las doze a la ora de las doze en la puerta

del sol — ~~en~~ la puerta del sol passa ro dos los

dias passa ro dos los dias aquella fue cion *Valen.* vael deel

fonca?

agua de nieve Con su Carreton , y las Requeso

neras diciendo Con voz *Ala Regala a la Regala a*

mo

Valen?

Requesones grandes, oye Requesonera quando te meten en S.ⁿ Fernando,

fonca? *Valen?* *fon?*

quando te pongan a tien presidio, adios cochistona, anda cara

2.

de ajusticiado) esta diversion para

Handwritten musical score on two staves. The top staff contains a melody with notes and rests, ending with a double bar line and a sharp sign. The bottom staff contains a bass line with notes and rests, ending with a double bar line and a sharp sign. The text "todos los dias" is written between the staves. The word "allegro" is written below the bottom staff.

Ayuntamiento de Madrid

Violin Primero

Mus 105-10

tona dilla a Duo.

Handwritten musical score for Violin Primo. The score consists of seven staves of music. The first staff begins with a treble clef, a key signature of one sharp (F#), and a 2/4 time signature. The music is written in a cursive, handwritten style. The second staff continues the melody with various note values and rests. The third staff includes a dynamic marking 'p' (piano) and a fermata. The fourth staff features a dynamic marking 'f' (forte) and a fermata. The fifth staff includes a dynamic marking 'p' and a fermata. The sixth staff includes a dynamic marking 'f' and a fermata. The seventh staff includes a dynamic marking 'p' and a fermata. The score concludes with a double bar line and the word 'al segno' written below the staff.

Volte

Coplas Allegretto 6/8

p *f*

allegro
2 veces

Segu. All. 3/8

f

Si como
se repite esto lo que dura la parola

f *allegro*

Ayuntamiento de Madrid

Sequ.¹⁵ And.¹² 

A single staff of handwritten musical notation. The staff begins with a treble clef and a key signature of one flat (B-flat). The music consists of several measures of eighth and sixteenth notes, some beamed together. There are dynamic markings: a 'p' (piano) under the second measure and an 'f' (forte) under the fifth measure. The notation is somewhat dense and expressive, with some notes appearing to be slurs or ties. The staff ends with a double bar line and a final note.

A handwritten musical score for a piece titled "Lied der Nachtigall". The score is written on a single staff with a treble clef and a key signature of two flats (B-flat and E-flat). The tempo/mood marking "poco" is written below the first measure. The music consists of a series of eighth and sixteenth notes, with some measures containing beamed eighth notes. There are some handwritten annotations above the staff, including a large "V" and some illegible markings. The paper is aged and shows some staining.

Allegro $\text{G}^{\#} \frac{3}{4}$

Handwritten musical score for a piece titled "Voz po". The notation is on a single staff with a treble clef and a key signature of one flat (B-flat). The music consists of several measures, including a double bar line and a repeat sign. The handwriting is in dark ink on aged paper.

A handwritten musical score on a single staff. The key signature is one sharp (F#). The tempo/mood is indicated as 'Poco fe' in cursive. The notation includes eighth and sixteenth notes, rests, and a repeat sign. There are some handwritten annotations above the staff, including a '2' and a '1'.

A single staff of handwritten musical notation in treble clef, one sharp (F#), and common time (C). The notation includes various note values, rests, and dynamic markings such as 'p' and 'f'. The manuscript is written on aged, slightly stained paper.

A single staff of handwritten musical notation. The staff begins with a treble clef and a key signature of one sharp (F#). The notation consists of several measures of music, including eighth and sixteenth notes, as well as rests. The handwriting is in dark ink on aged, slightly yellowed paper.

Coplas All.^{to} 

Handwritten musical score on ten staves. The notation includes treble clefs, a key signature of two flats (B-flat and E-flat), and various musical symbols such as notes, rests, and dynamic markings.

Key markings and annotations include:

- pp* (pianissimo) at the beginning of the first staff.
- le* (forte) markings on the fourth, sixth, and eighth staves.
- allegro* marking on the fifth staff.
- allegro dos m. a. voz* (allegro two measures, voice) on the fourth staff.
- Sequi* (Follow) on the fifth staff.
- Serepiten lo que duxa la parola* (Repeat what the word leads) on the eighth staff.
- allegro* marking on the ninth staff.

The score concludes with a double bar line on the ninth staff, followed by two empty staves.

Ayuntamiento de Madrid

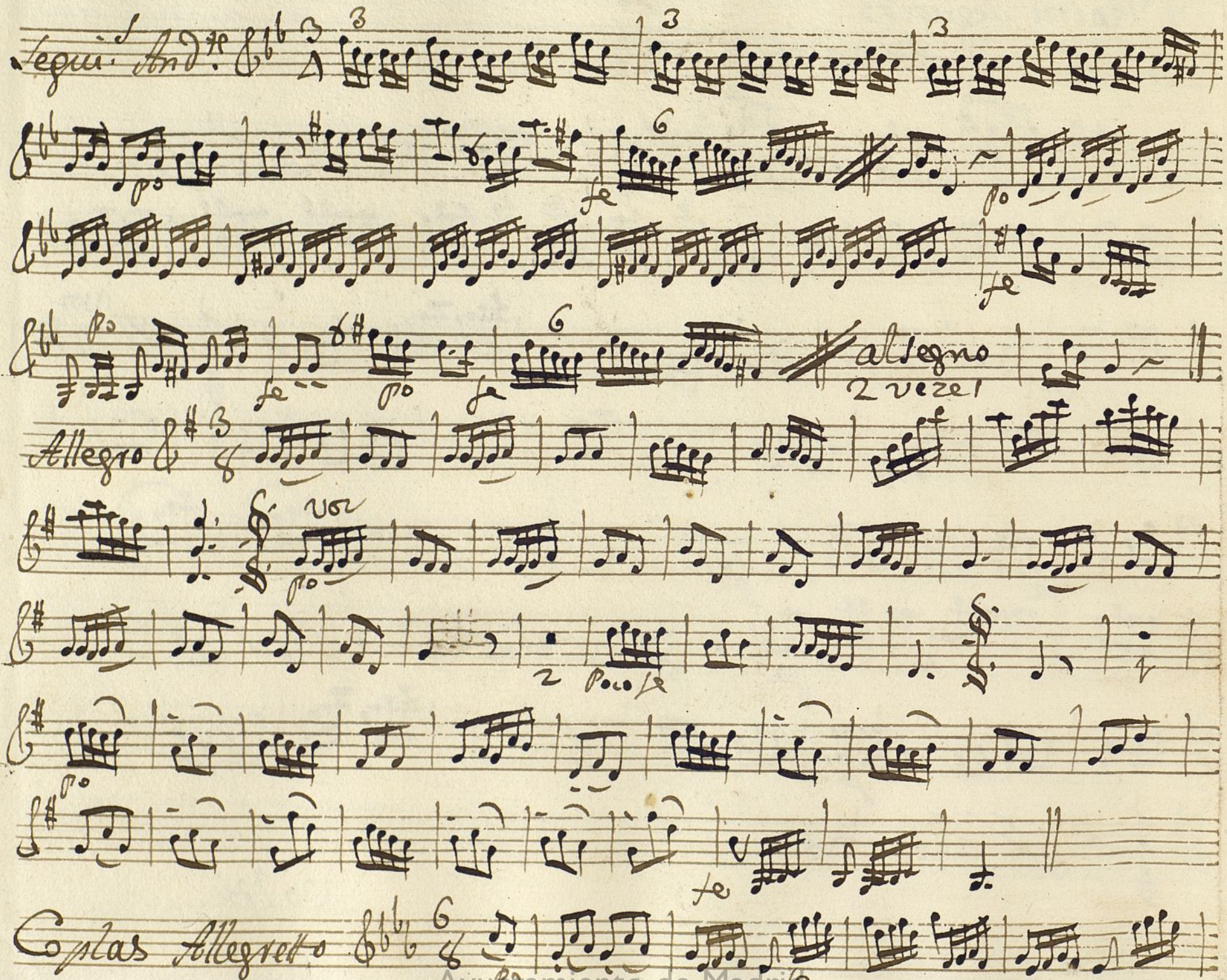
Violin Segundo

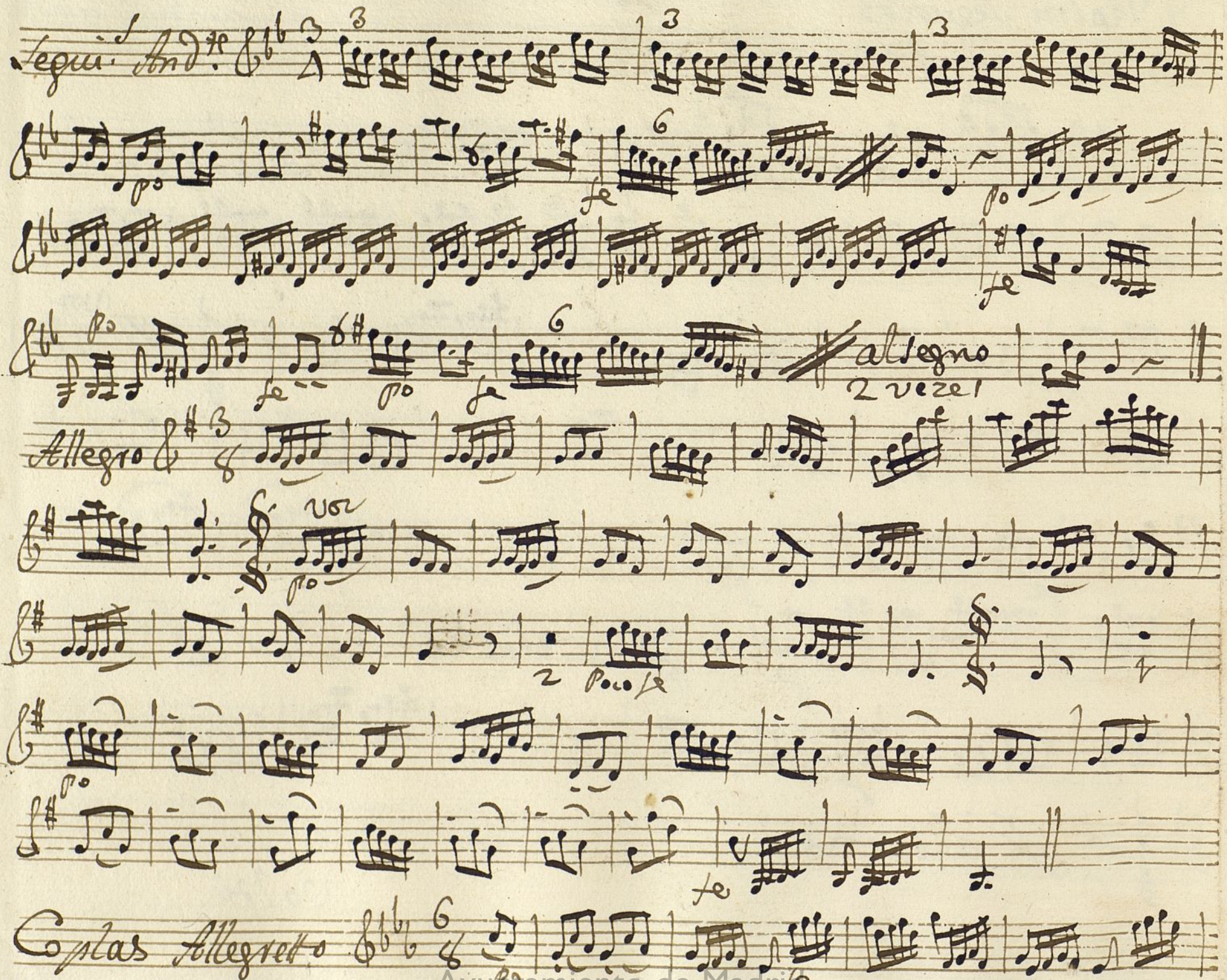
tonadilla a Duo.

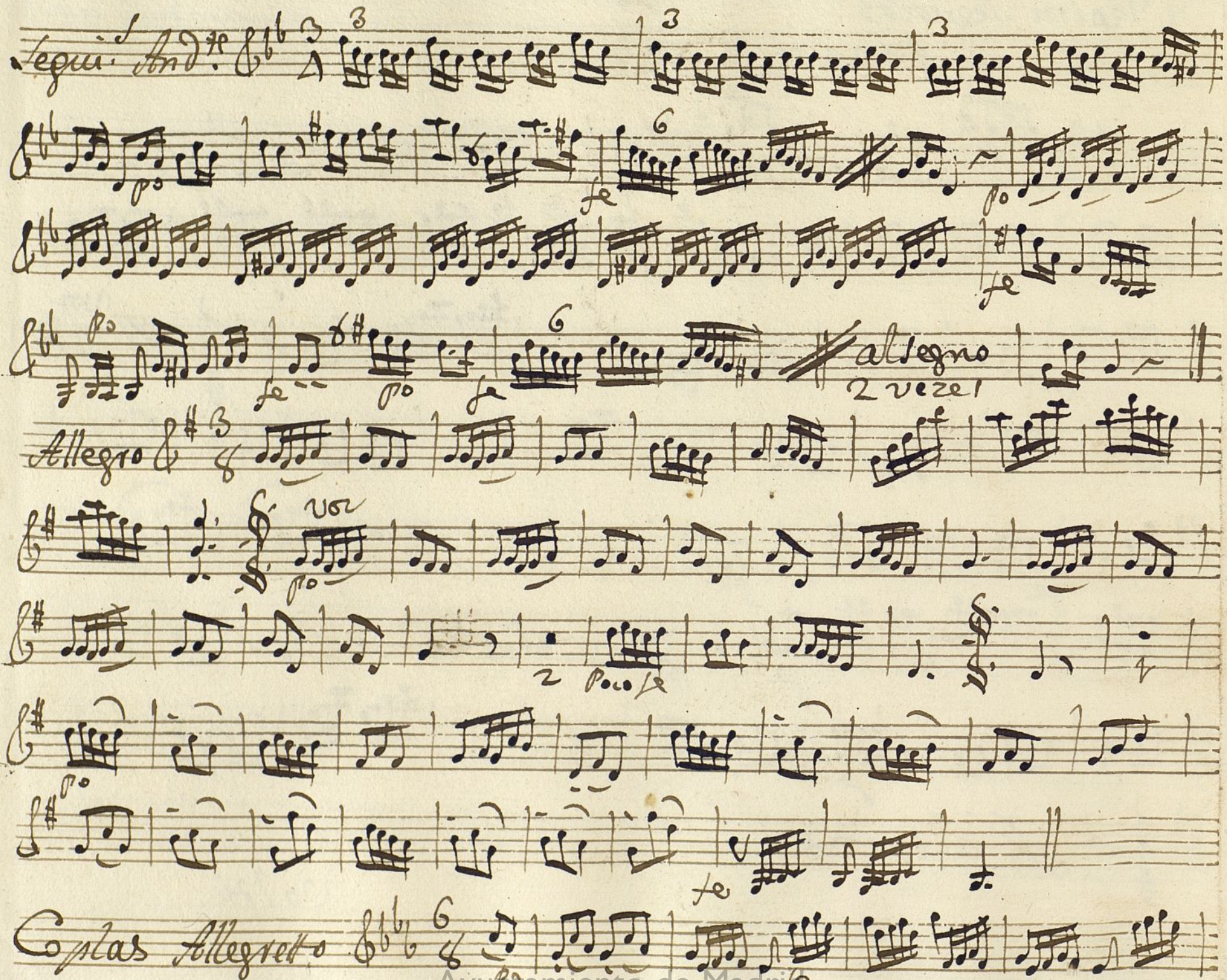
Mus 105-10

Handwritten musical score for Violin Segundo, titled "tonadilla a Duo." The score is written on ten staves, organized into five systems of two staves each. The key signature is one sharp (F#) and the time signature is 2/4. The notation includes various musical symbols such as notes, rests, beams, and dynamic markings like "p" (piano) and "pp" (pianissimo). The score concludes with a double bar line and the instruction "al segno".

Vol 21

legui. And.^{te} $\text{G}^{\flat}\text{C}^{\flat}$ $\frac{3}{4}$ 

Allegro $\text{G}^{\flat}\text{C}^{\flat}$ $\frac{3}{8}$ 

Coplas Allegretto $\text{G}^{\flat}\text{C}^{\flat}$ $\frac{6}{8}$ 

Handwritten musical score on ten staves. The notation includes various musical symbols such as clefs, time signatures, notes, rests, and dynamic markings. The manuscript is written in brown ink on aged, slightly yellowed paper.

Key markings and annotations include:

- allegro* (written twice, once crossed out)
- 2 vez*
- Segui. All.*
- vo*
- Le Repite lo que dura la parolaa*
- allegro*

Ayuntamiento de Madrid

Oboe Primero

+

Mus 105-10

Conadilla à Duo.

Handwritten musical score for Oboe Primero, titled "Conadilla à Duo." The score is written on five staves. The first staff begins with a treble clef, a key signature of one sharp (F#), and a 2/4 time signature. The music consists of eighth and sixteenth notes, with some rests and a fermata. The second staff continues the melody with similar notation. The third staff features a double bar line with a repeat sign, followed by a section marked "12" and "je". The fourth staff continues the melody with a section marked "3" and "je". The fifth staff ends with a double bar line and the word "allegro" written below the staff.

Handwritten musical score for Oboe Primero, titled "Segui. And." The score is written on three staves. The first staff begins with a treble clef, a key signature of one flat (Bb), and a 3/4 time signature. The music consists of eighth and sixteenth notes, with some rests and a fermata. The second staff continues the melody with a section marked "6" and "je". The third staff continues the melody with a section marked "je" and "allegro".

All.
8

la ze //

allegro
2 vez

Coplas Allegretto 6/8 *fe*

fe

fe

fe

allegro
2 vezes

Segui. All. 3/4

fe

fe *Se te pique lo que dura la parola*

fe *allegro*

2 vezes

Oboe Segundo

Mus 105-60

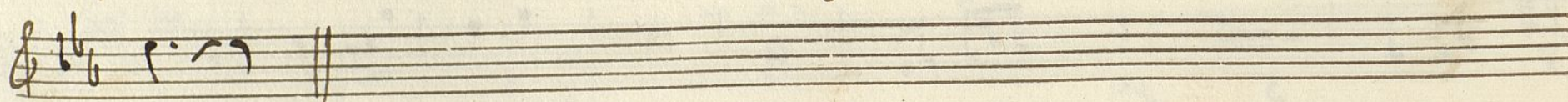
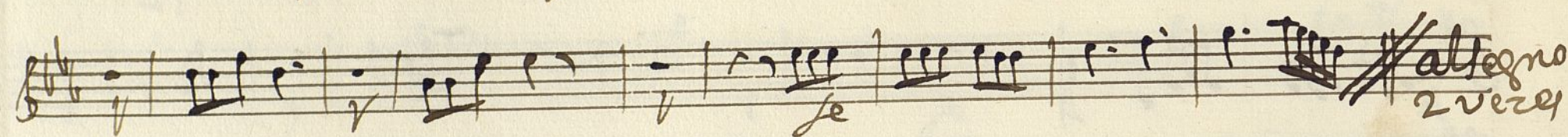
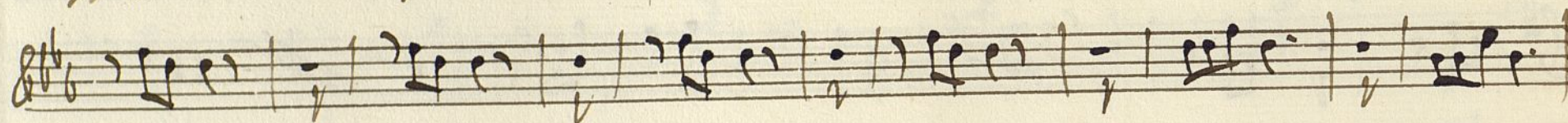
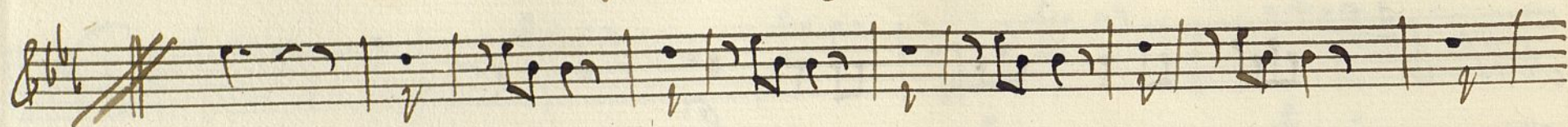
sonadilla à Duo.

Handwritten musical score for Oboe Segundo, featuring two systems of staves with notes, rests, and dynamic markings.

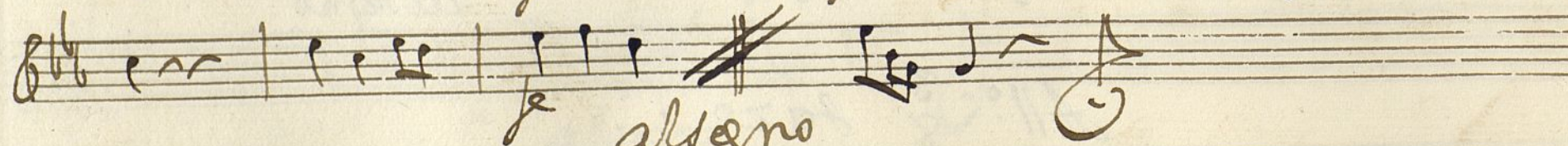
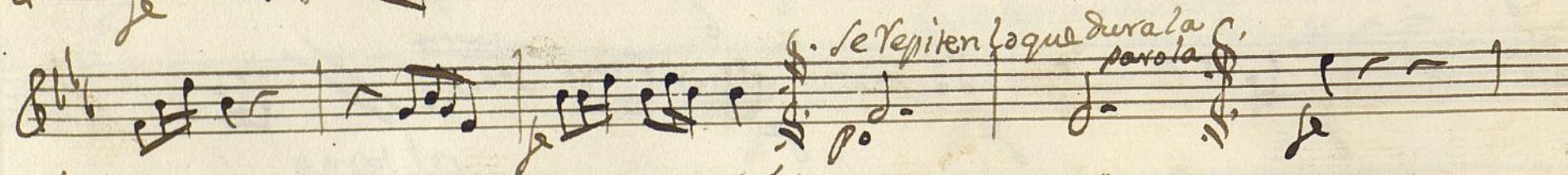
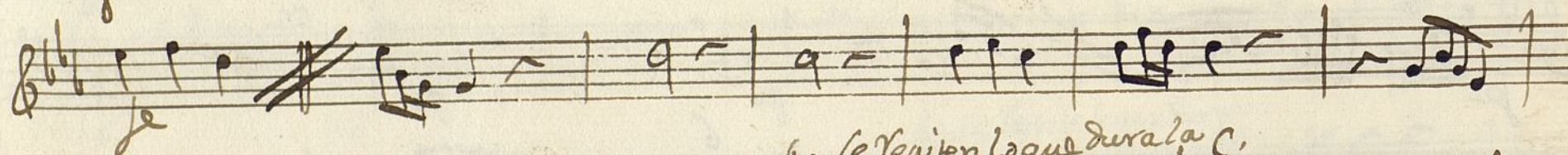
The first system includes the tempo marking *All.^o* and the key signature of one sharp (F#). The second system includes the tempo marking *allegro*. The third system includes the tempo marking *Segui. And.^{te}* and the key signature of two flats (Bb). The fourth system includes the tempo marking *allegro* and the instruction *2 veces*.

All.^o 3/8 Jaze

Coplas Allegretto & $\text{b} \flat \text{b}$ 6



Segni. All.^o 8⁶/₈ 3/4



Je aligno
2 verzet

Trompa Primera

Mus. 105-10

sonadilla a Dos.

Handwritten musical score for Trompa Primera, featuring ten staves of music in G major and 2/4 time. The score includes various musical notations such as notes, rests, bar lines, and dynamic markings like 'ff' and 'p'. It also contains tempo markings 'allegro' and 'And.'.

2 veces

Voltri

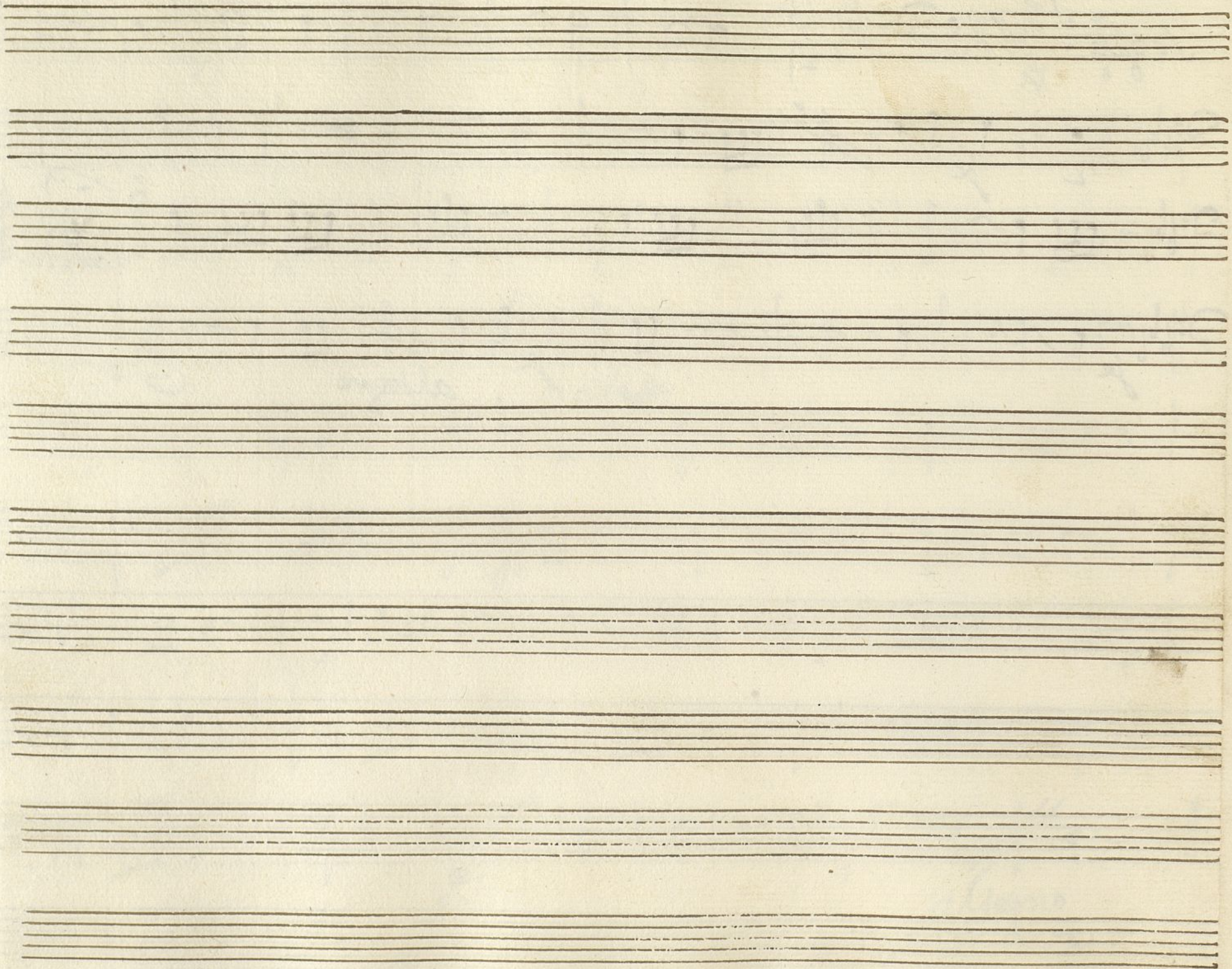
Handwritten musical score on ten staves. The notation includes various musical symbols such as clefs, key signatures, time signatures, and notes. The score is written in a cursive, handwritten style.

The first staff begins with a treble clef, a key signature of one sharp (F#), and a time signature of 3/8. The notation continues across the staves with various musical symbols and notes.

The fifth staff contains the handwritten text "Coplas Allegretto" followed by a treble clef, a key signature of one sharp (F#), and a time signature of 6/8. Above the staff, the word "elafa" is written in a cursive script.

The eighth staff ends with a double bar line and the word "allegro" written below it. Below the eighth staff, the words "dos veces" are written in a cursive script.

Handwritten musical score on four staves. The first staff begins with the word "Segui" and a treble clef. The second staff has a "2" below it. The third staff has a "Parola" written at the end. The fourth staff has an "allegro" marking. The music is written in a historical style with various note values and rests.

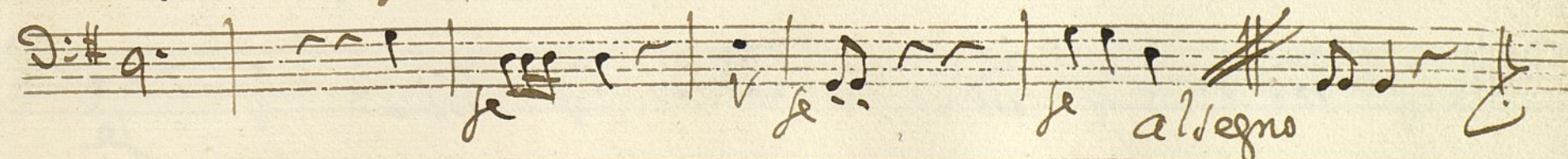
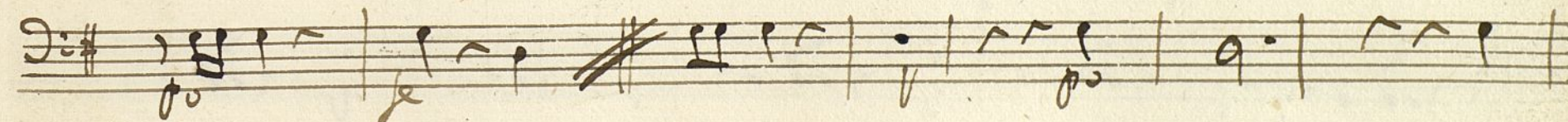
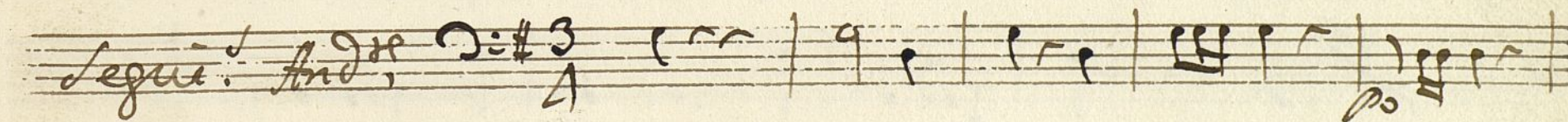
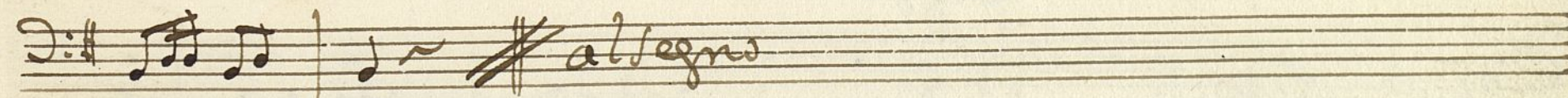
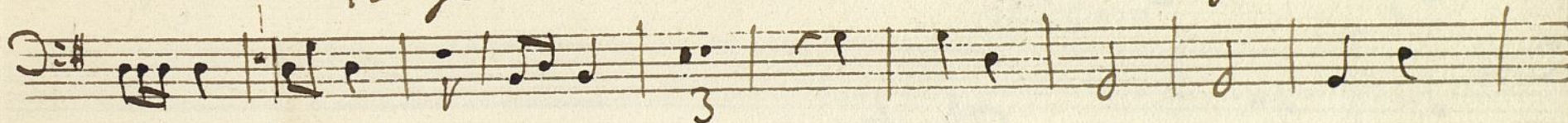


Ayuntamiento de Madrid

trump 2^a

sonadilla à Duo.

Mus 105-60



2 vezes

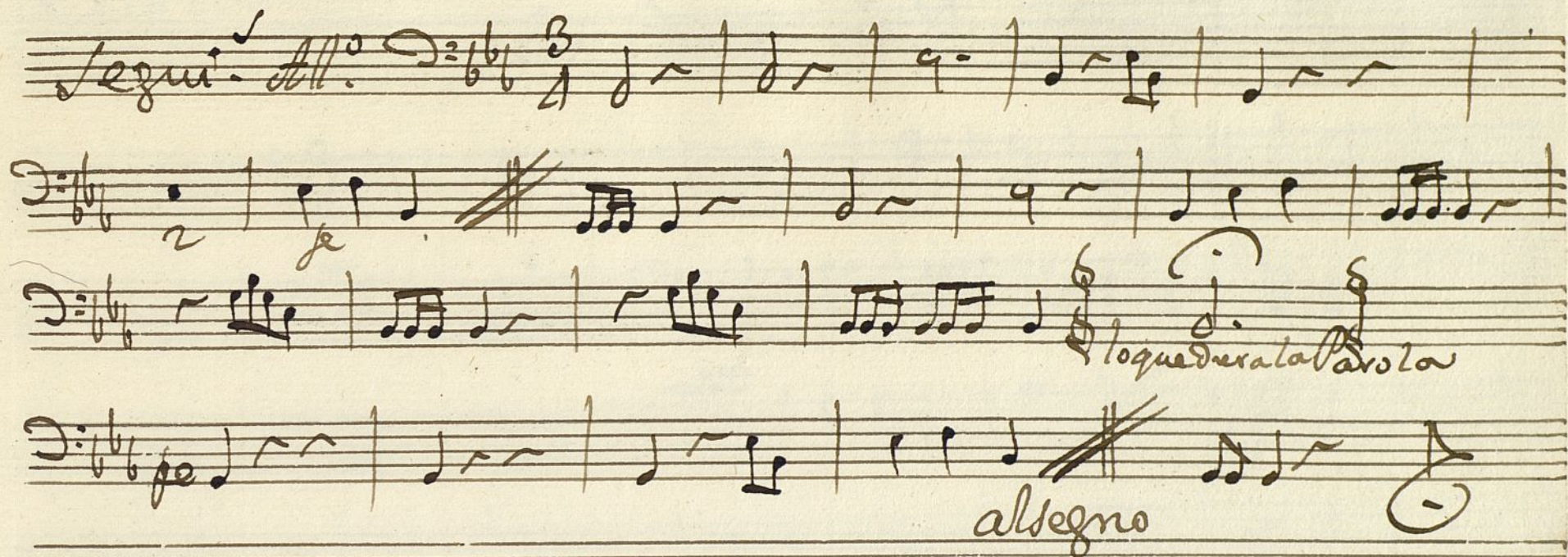
Voce

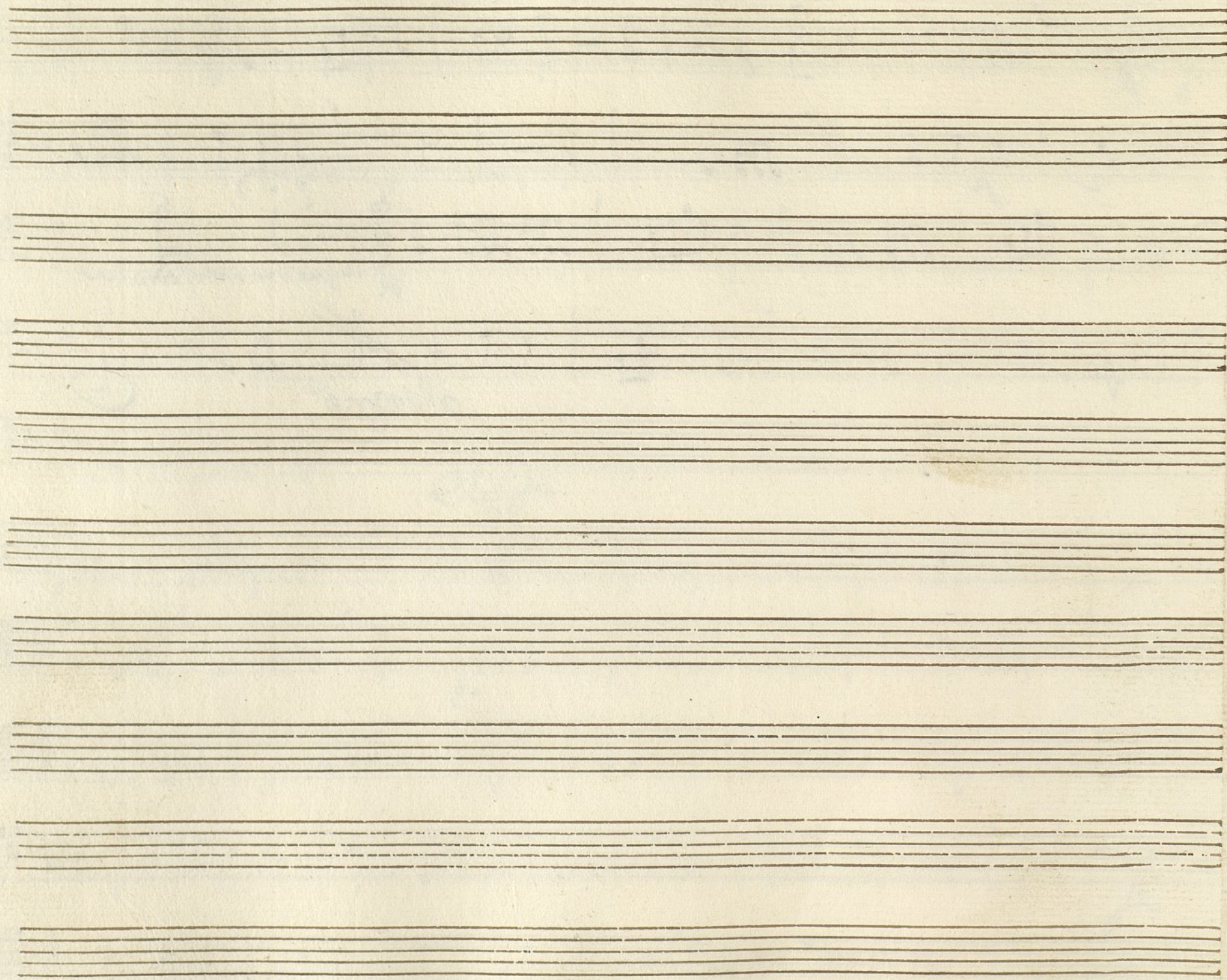
All. $\text{C} \sharp$ $\frac{3}{4}$

Clapa

Coplas Allegretto $\text{C} \flat$ $\frac{6}{8}$

allegro moderato





Viola

⁺
Sonadilla à Duo %

Mus 105-10

Handwritten musical score for Viola, titled "Sonadilla à Duo %". The score is written on eight staves. The first staff begins with the tempo marking "Allo." and the time signature "2/4". The key signature is one sharp (F#). The notation includes various musical symbols such as notes, rests, and dynamic markings like "p" (piano) and "f" (forte). The score concludes with the instruction "allegro" written across the eighth staff.

Segu. And.^{te} $\text{B}\flat\text{B}\flat\text{B}\flat$ $\frac{3}{4}$ p^o le

p^o le

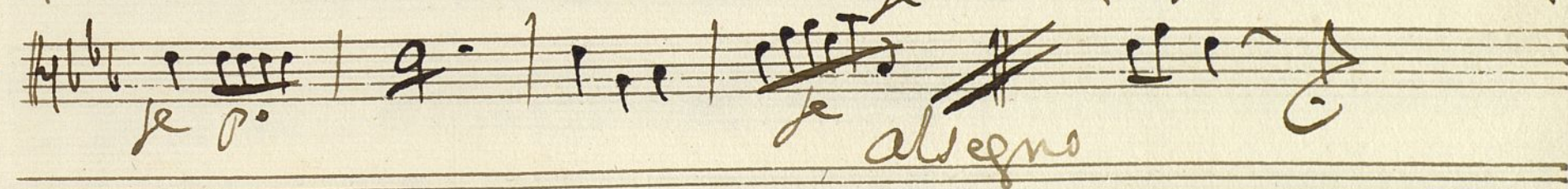
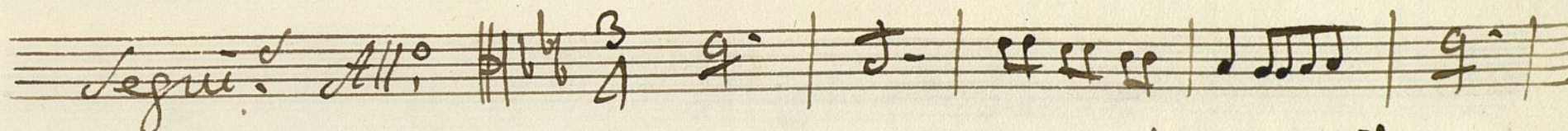
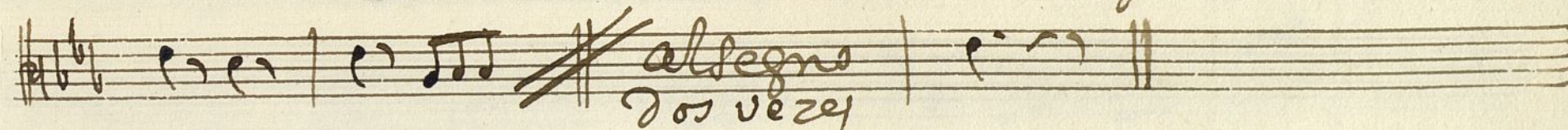
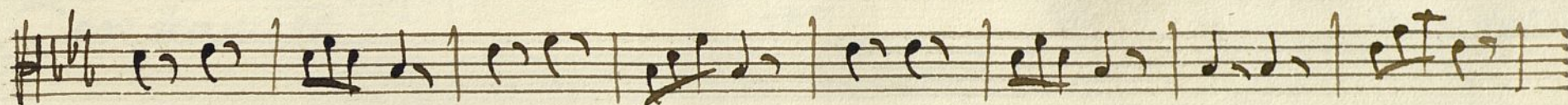
Allegro $\text{B}\flat\text{B}\flat\text{B}\flat$ dos veces

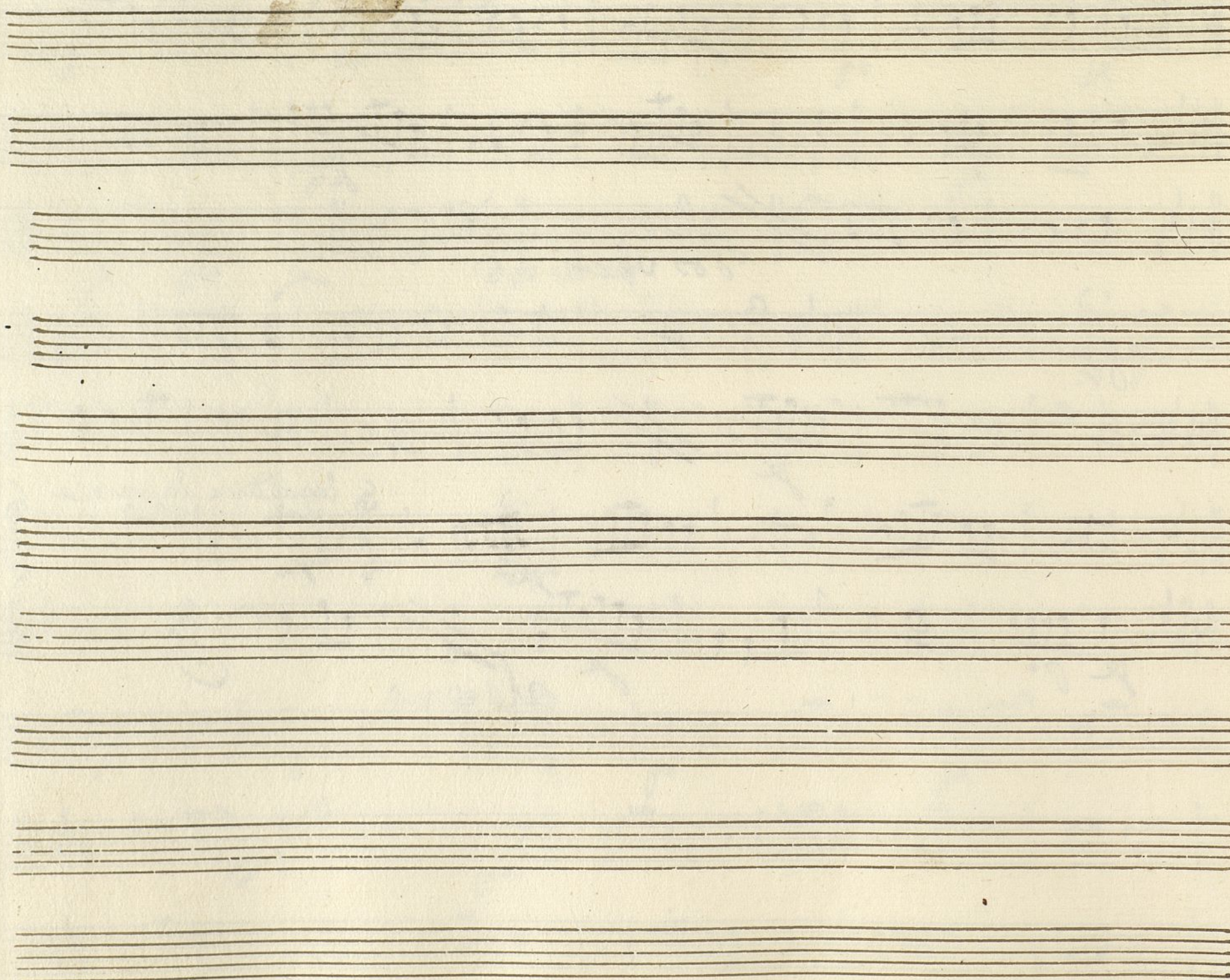
All.^o $\text{B}\flat\text{B}\flat\text{B}\flat$ $\frac{3}{8}$

p^o

Coplas Allegretto $\text{B}\flat\text{B}\flat\text{B}\flat$ $\frac{6}{8}$ p^o le

p^o



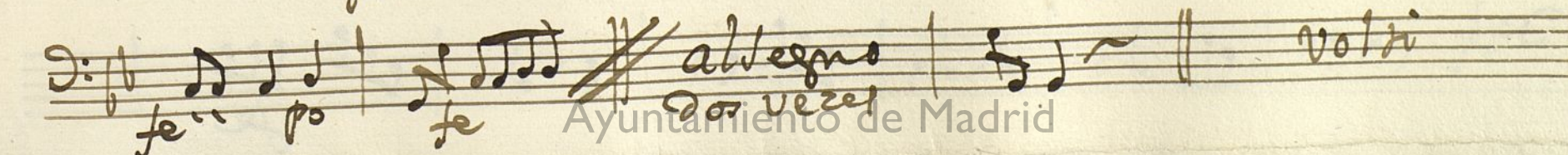
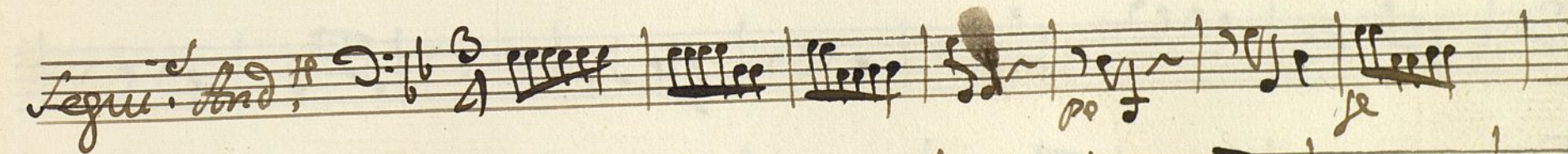
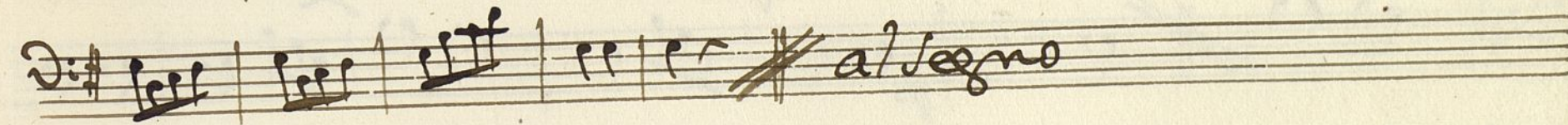
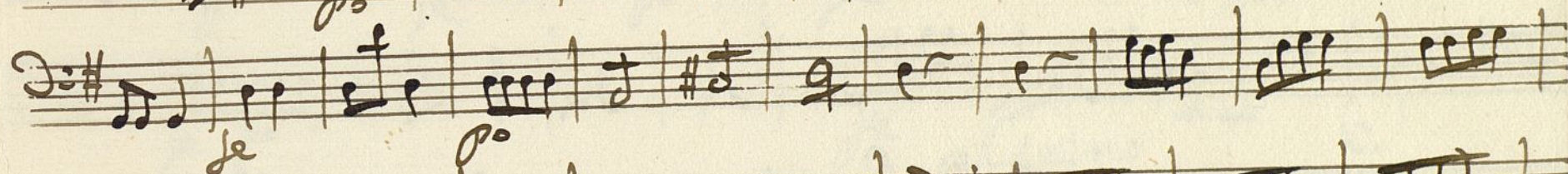
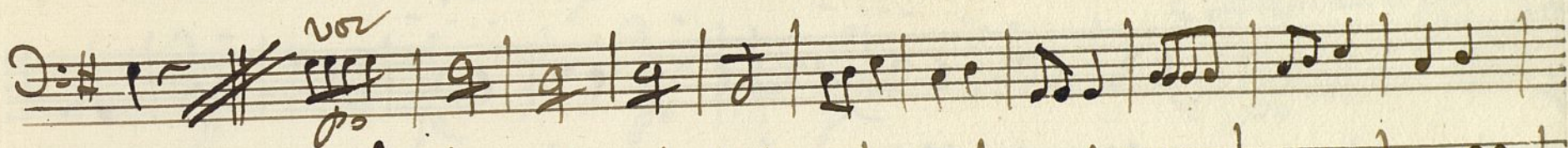
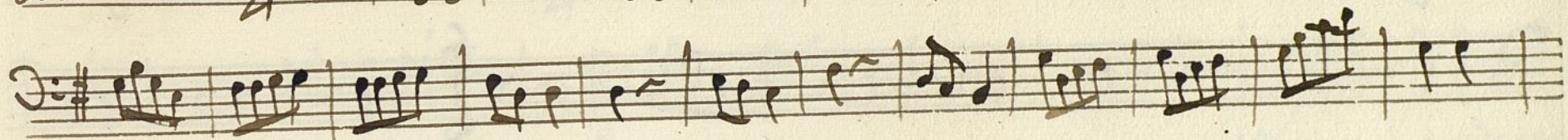


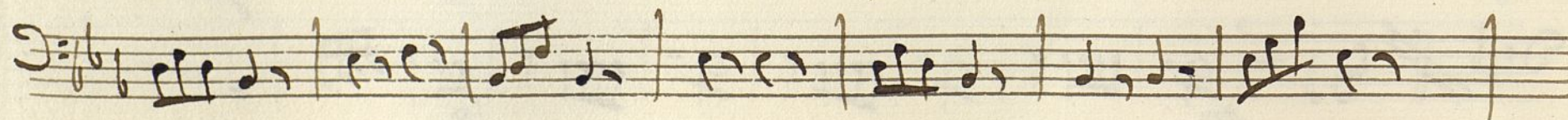
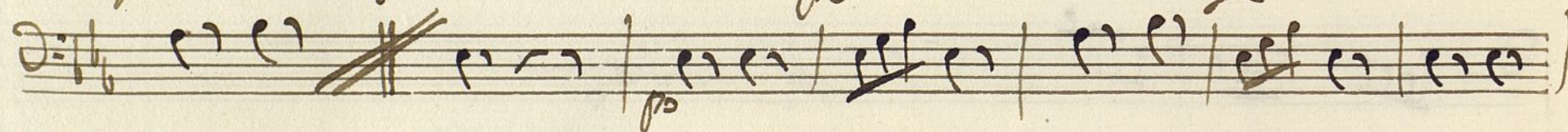
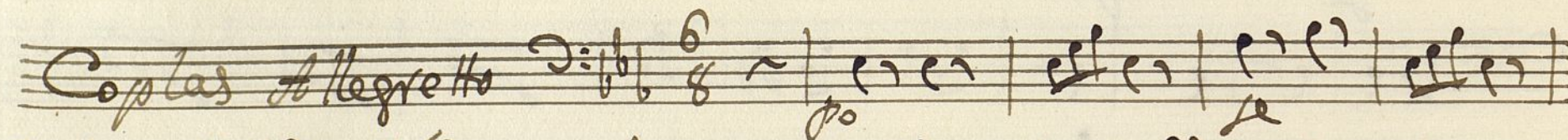
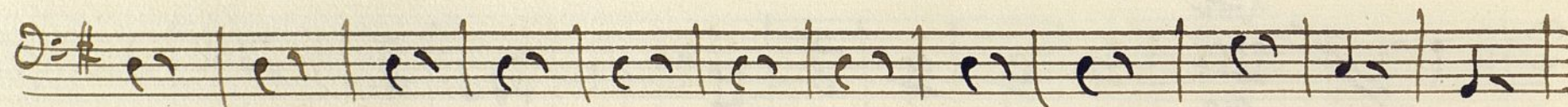
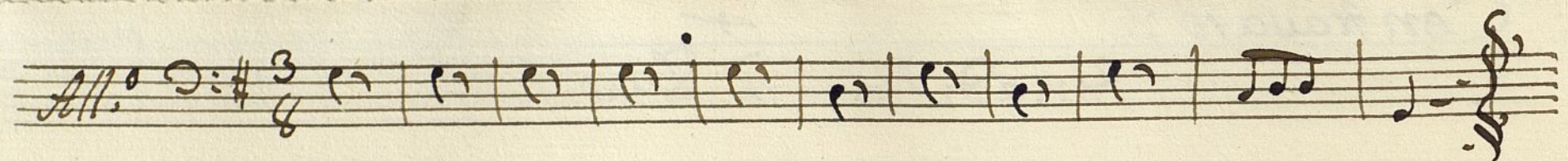
Ayuntamiento de Madrid

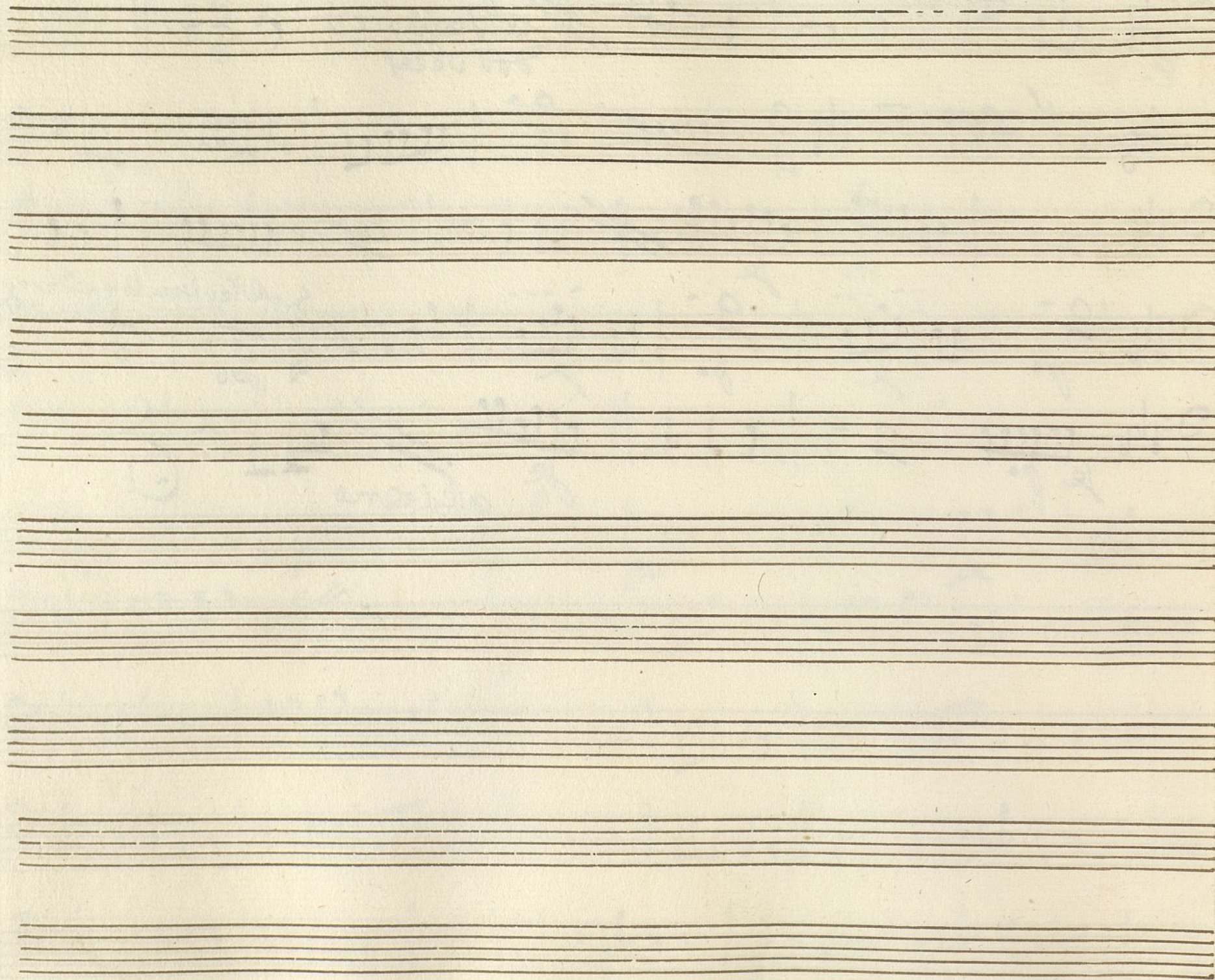
Con travaso !.

tonadilla à Duo !.

Mus 105-60








Ayuntamiento de Madrid


Con trawajo

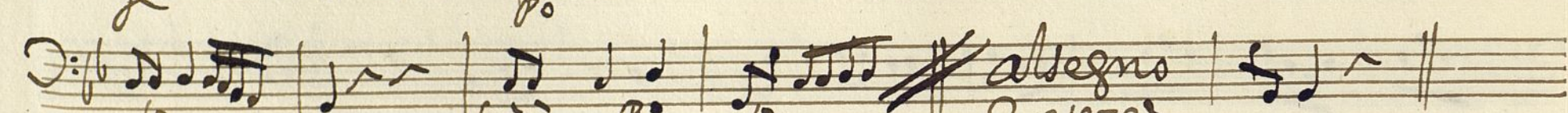
sonadilla à Duo.


Mus 105-60

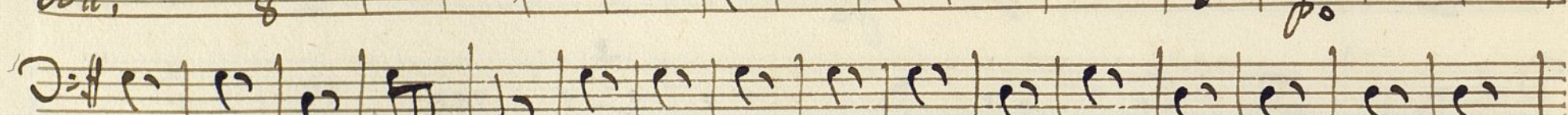
Handwritten musical score for a sonadilla à Duo. The score is written on seven staves. The first staff begins with a treble clef and a key signature of one sharp (F#). The notation includes various note values, rests, and dynamic markings such as 'p' (piano) and 'f' (forte). A double bar line with a repeat sign is present in the third staff. The sixth staff ends with a double bar line and a repeat sign. The seventh staff begins with a double bar line and a repeat sign, followed by the word 'allegro' and a double bar line. The word 'Vol'n' is written below the seventh staff.


Sequi. And. $\text{D}:\flat\frac{3}{4}$ 




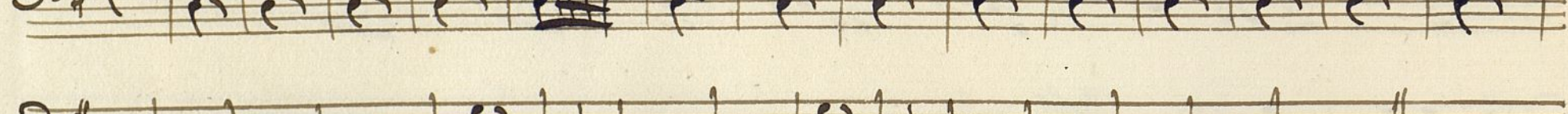


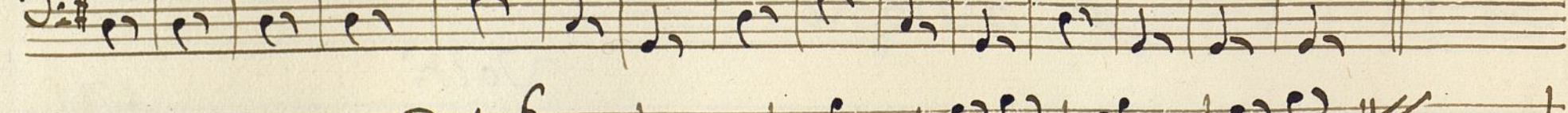
Allegro $\text{D}:\sharp\frac{3}{8}$ 

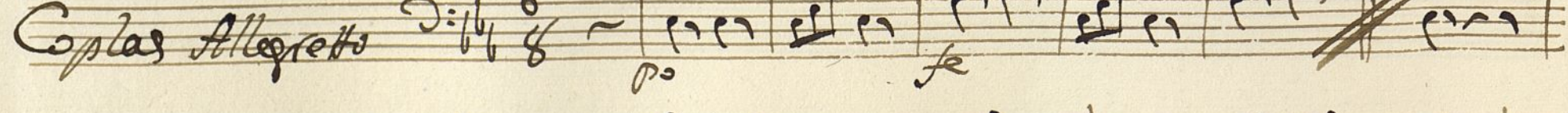





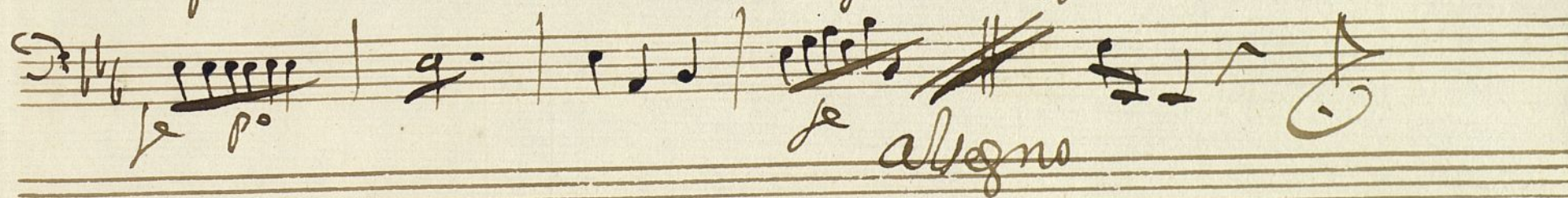
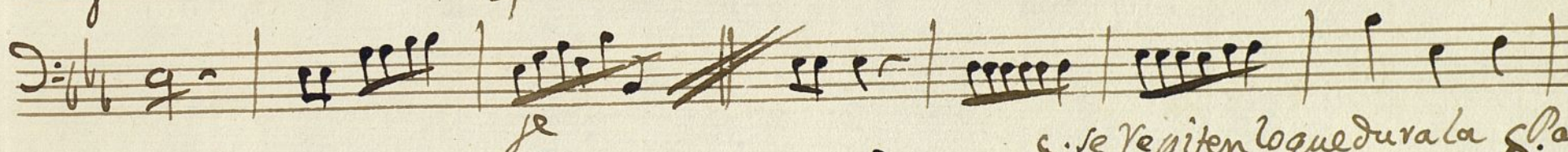
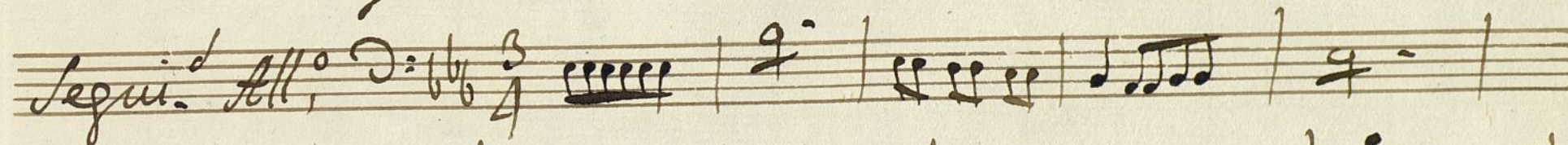
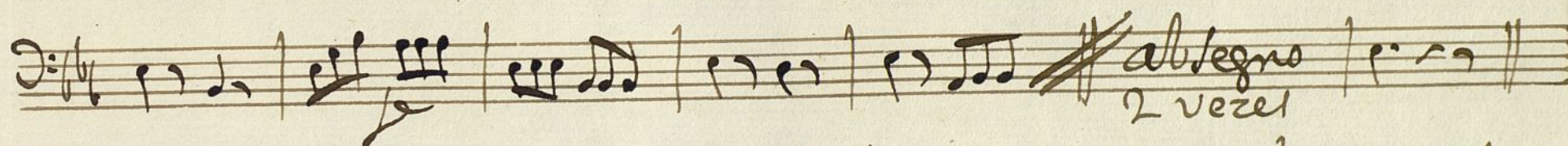
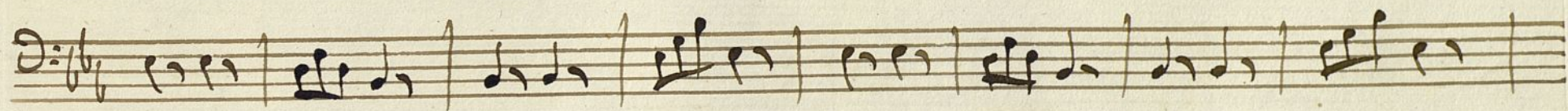
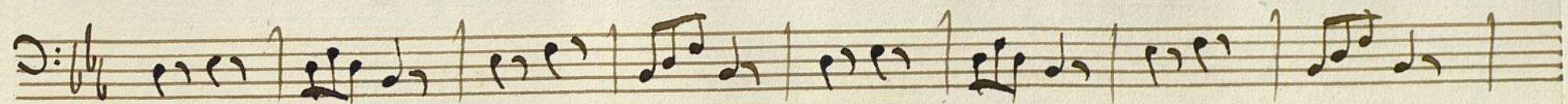






Coplas Allegretto $\text{D}:\flat\frac{6}{8}$ 





Ayuntamiento de Madrid