

Musica del Sainete.

fin de fiesta.



Los Baños del Río.



Manzanares.



del Sr. Breve. 1768.





Sainete.

Tota

*Allegro*

*Allegro*

todas

Man za na res man - za

na res - po cas aguas ay - en ti - para

tem plar los - ar do res - de los hi jos de -

- ma drid - a la Tota que chusco es el



Leg. 2.º N.º 9.

+

Parte de Clave

Del Sainete

Los Baños del Rio Manzanares:

Entre 1705



Tota

Allegro

3

4

3

4

todas

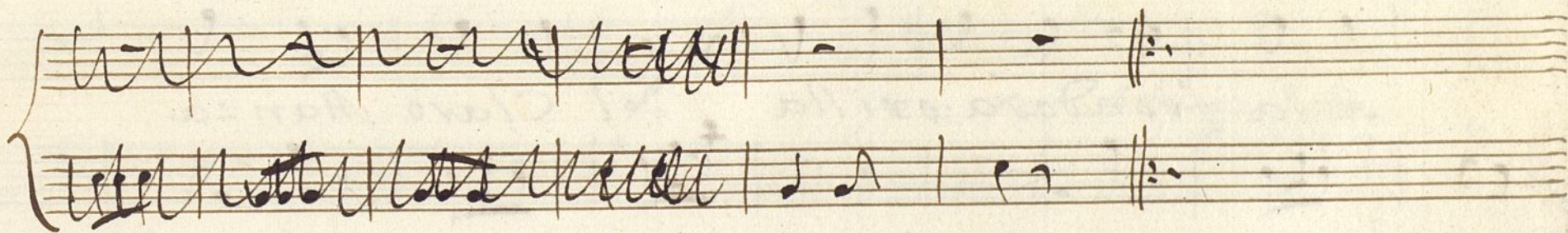
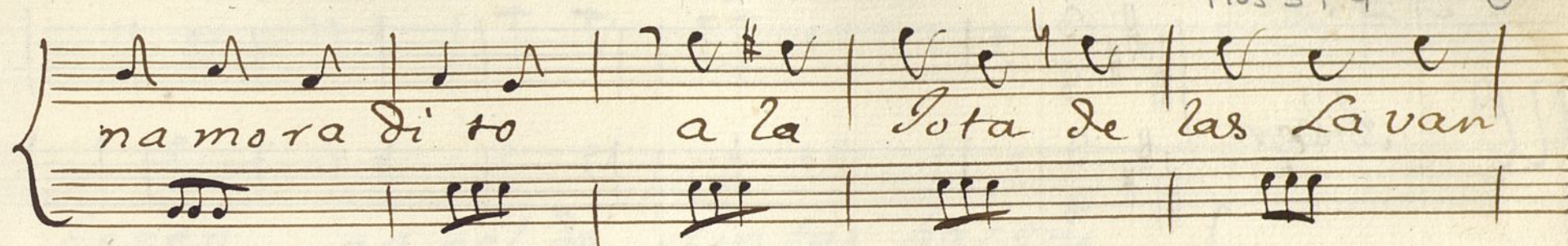
Manzanares man-za na res - pocas

aguas ay - en ti - para la bar los - pa

ñales - de los hijos de - Madrid - a la

Tota que chusco es el Rio que - se seca de e





~~Allegro se repite la Jota alavoz~~

Allegro se repite la Jota alavoz X

Volvi



3 *Ad. 2*

*No Allegro*

*A la frondosa orilla del Claro Manza*

*nares a legres la vanderas pa sel de Ninfas*



hazen papel de Ninfas hazen  
fe  
yen su Alegria  
a sus cadencias del Tabon y la tabla

The image shows a page of handwritten musical notation on aged, slightly stained paper. The notation is written in brown ink and consists of several staves. The first staff has a treble clef and a key signature of one sharp (F#). The lyrics are written in a cursive hand below the staves. The paper has some foxing and a small tear at the bottom left corner.



Handwritten musical score on aged paper. The score consists of four systems, each with a vocal line and a piano accompaniment line. The lyrics are in Spanish and describe the formation of an orchestra. The notation includes various musical symbols such as notes, rests, and bar lines. The paper shows signs of age, including yellowing and some staining.

forman orques ta del Pabon y la tabla

forman orques ta forman orques

ta orques ta;



Seguidi de Coronado

Allegretto

Un Calsero

chusco que yba à revella

que yba à re

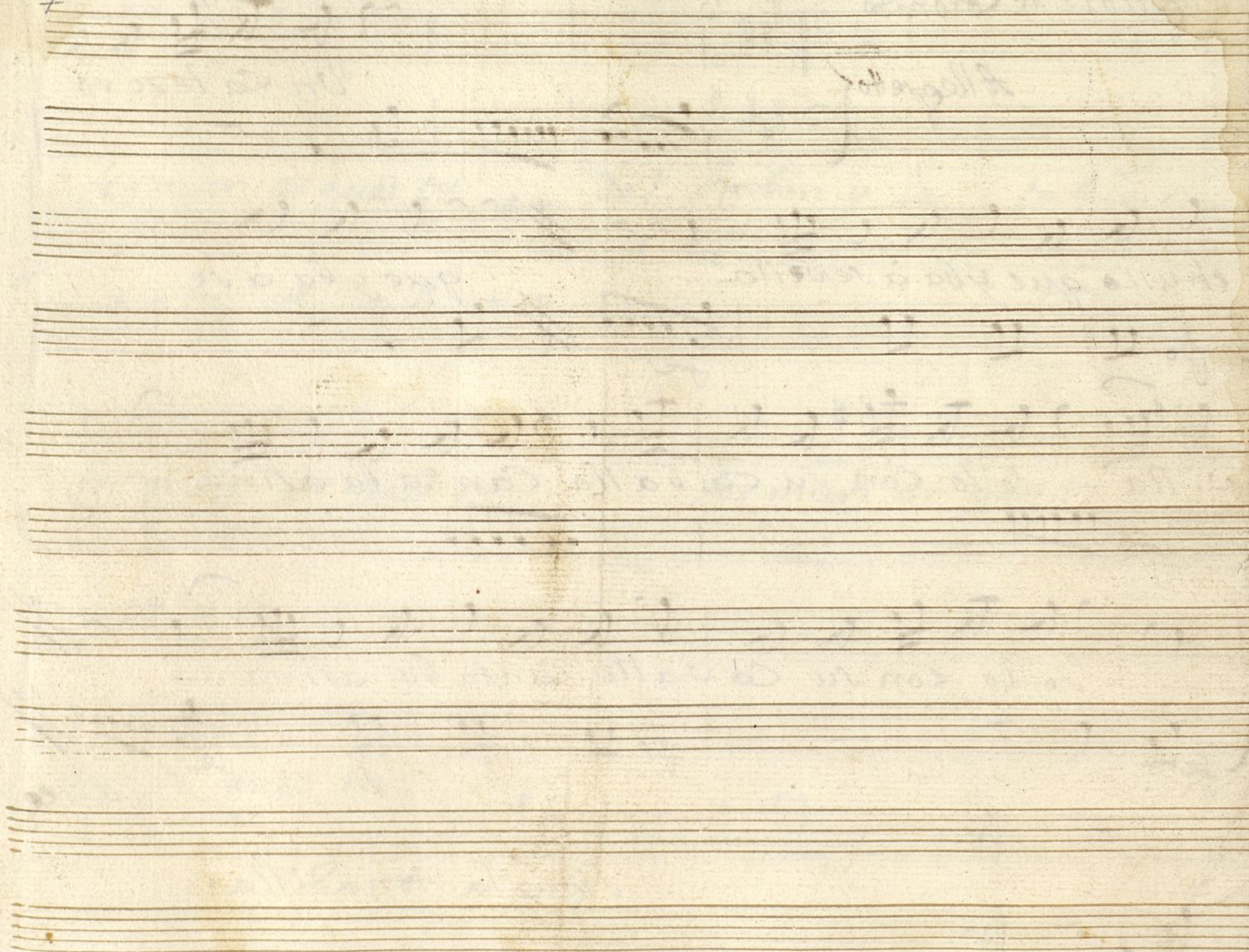
villa - solo con su caballo cantaba asina -

so lo con su Ca vallo. Cantaba asina -

allegro

Sigue la tonadilla







Violin Primero,

del Sainete. Los Baños del Rio //

MUS 59-4

Valencia 1765

Tota.

Allegro



*siguiente segund. ~~de~~ ~~Marxana~~*  
*que se viene la hora clavor X*

volvi







Seguidi. <sup>5</sup> de Coro <sup>do</sup>

*Allegro*  $\text{F}\sharp\text{C}\sharp$   $\frac{3}{4}$

*p.* *le* *p.* *le*

*allegro*

Sigue la tonadilla ~~del~~ Del Arriero //

~~Y para la Cacería de~~  
~~el Duque del Conde de~~ //



3

1 2 0

7



Violín Primero.

+

Estre 1765

Mus 59-4

Del Sainete Los Baños del Rio Manzanares.

Sota 1



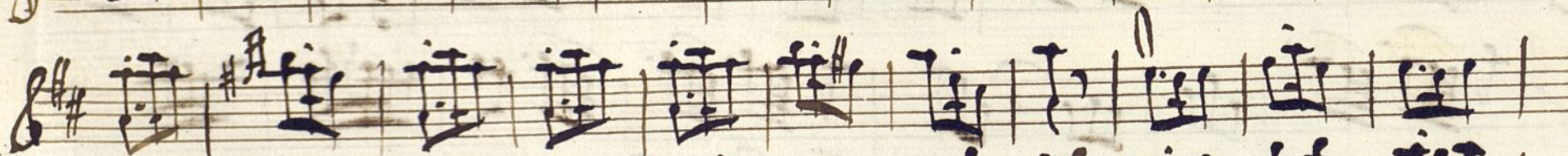
~~Sigue la Sota~~

~~Allegro~~ se Repite la Sota a la señal X



2  
No. 2. Ad.

Allegro





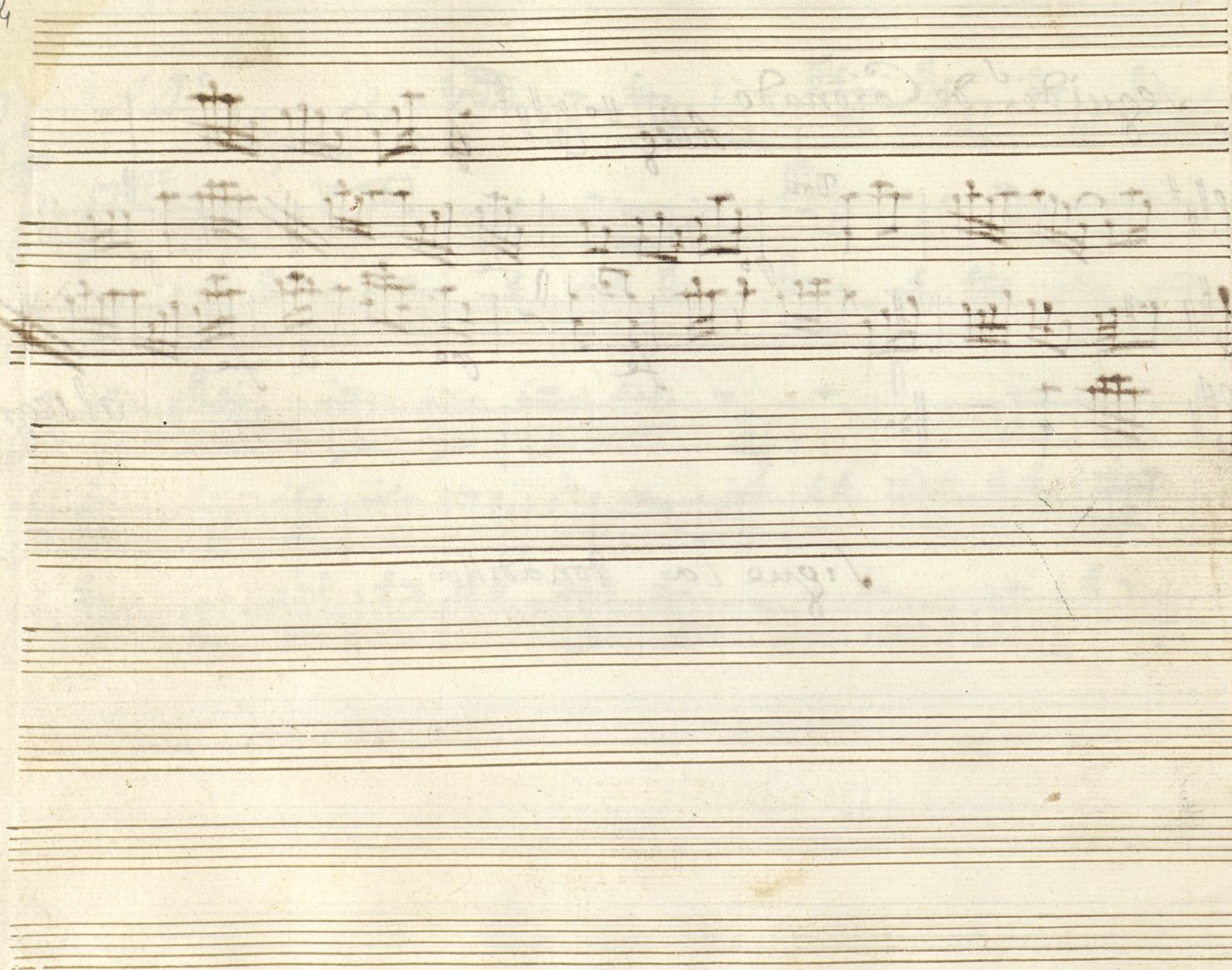
no, *Seguidi.º de Coronado* <sup>3</sup>

*Alleg.º*



*Sigue la tonadilla*







Violin Primero. ~~Molto~~

+

Nº 59-4

del Sainete. Los Baños del Río //

Oboes y.

Tota

Allegro



Figura de la Virgen de la Mariana //

propio de la obra y la voz //

Voln



e

Al:º

Allegro 3/4





3 Seguidi: de Coro<sup>do</sup>

*Alleg<sup>ro</sup>*  $\text{G}\sharp\text{F}\sharp$   $\frac{3}{4}$

*Non*

*po*

*po*

*po*

*fe* *fe* *po* *fe* *allegro*

*pausa*

Sigue la tonadilla ~~allegro del coro~~

~~allegro del coro~~ ~~allegro~~







Violín Segundo. ~~Violín~~

7

Mus 59-4

1

del Saynete // Los Baños del Río. //

Tota 1

Allegro

$\frac{3}{4}$

voz  
po

Se Vespire ala voz. X

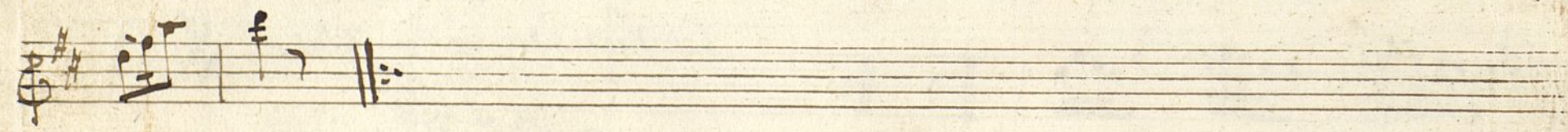
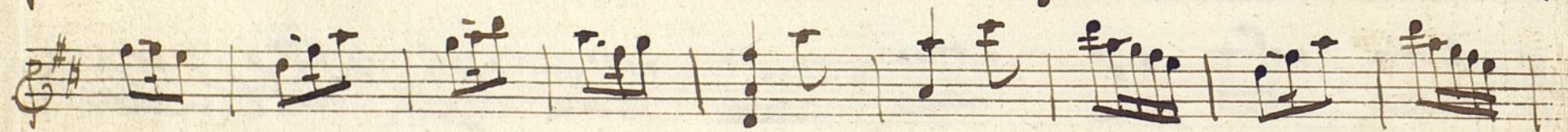
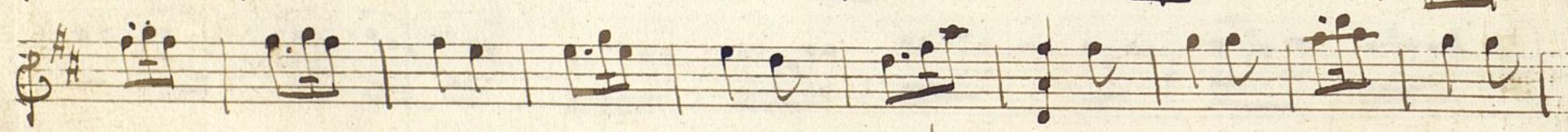
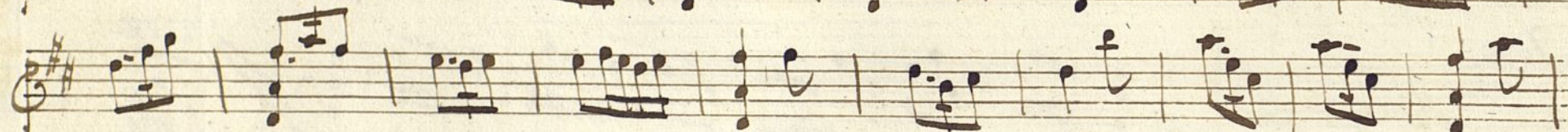
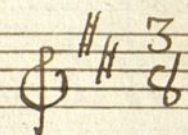
Sigue los Segs. ~~con~~ ~~Manera~~ //

~~Angela~~ ~~de~~ ~~los~~ ~~Segs~~ // Volti



No. 2 A 4<sup>o</sup> 113

*Allegro*





3

*Alleg.<sup>ro</sup>*

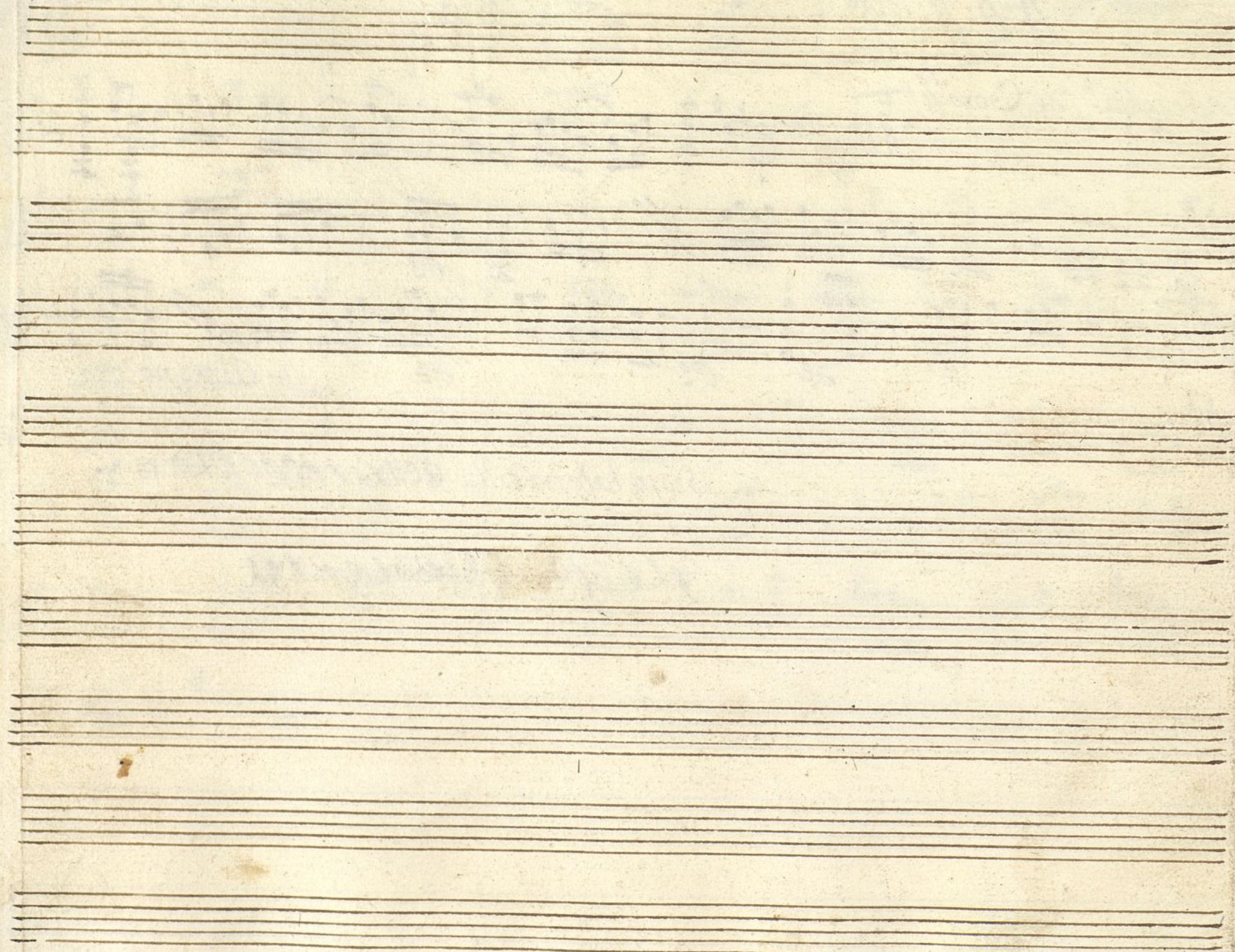
*Alleg.<sup>ro</sup>*

Al segno

Sigue la tonadilla ~~Véase el~~ Bona No

Yllegge 96 Chikodoccali







Violin Segundo.

del Sainete " Los Baños del Río "

Julio 1765

MUS 59-4

Toto.!

Allegro

Handwritten musical score for Violin II, featuring six staves of music in G major (one sharp) and 3/8 time. The notation includes various rhythmic values, slurs, and dynamic markings like 'p' and 'f'. The sixth staff ends with a double bar line and a repeat sign.

señalite ala voz

siguiente segund de Maricena

que queda en la voz

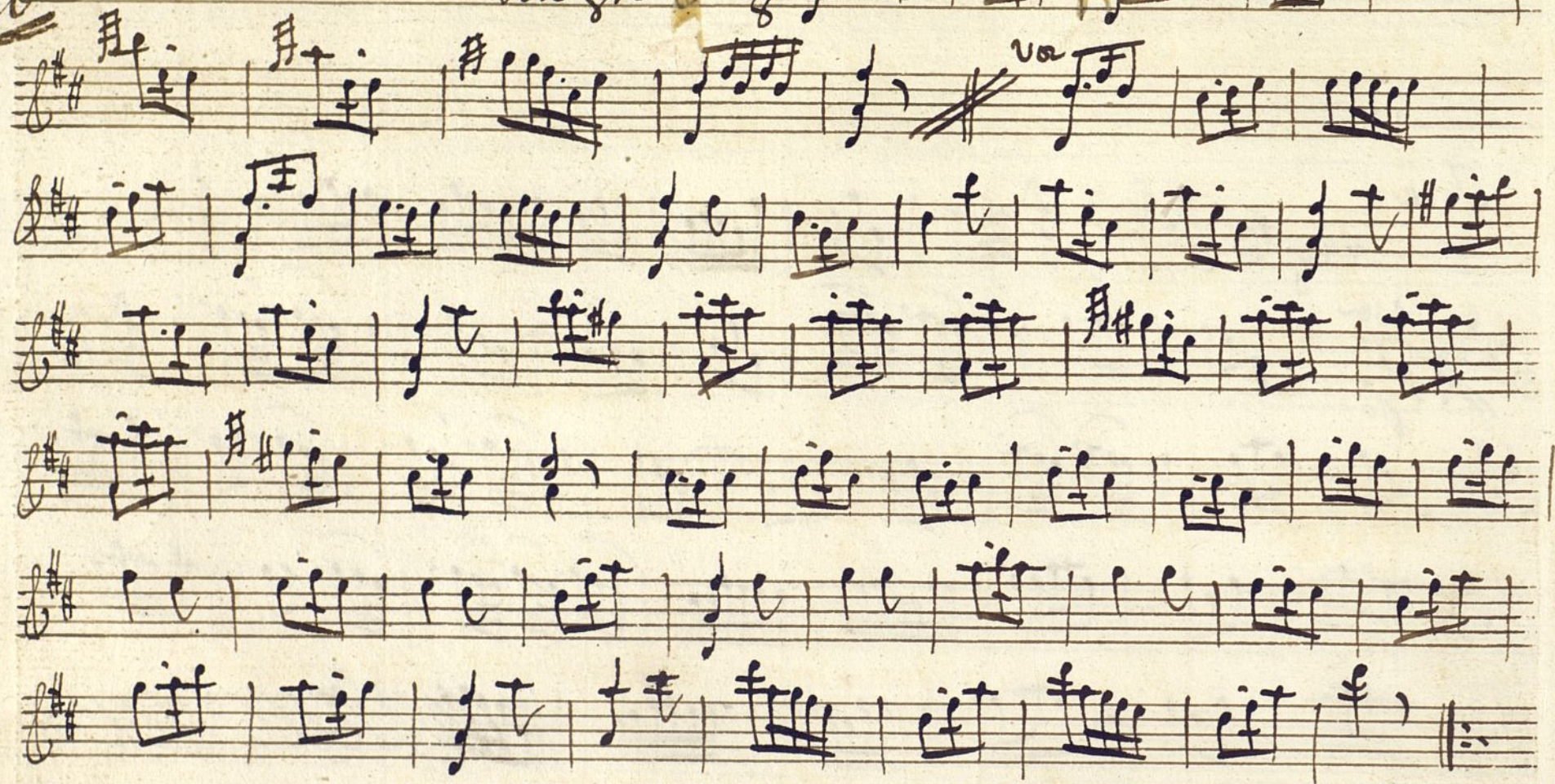
Volvi



*No*

*2. Ad:*

*Allegro*





No. Segui. de Coro<sup>do</sup> 3

Alleg<sup>ro</sup>

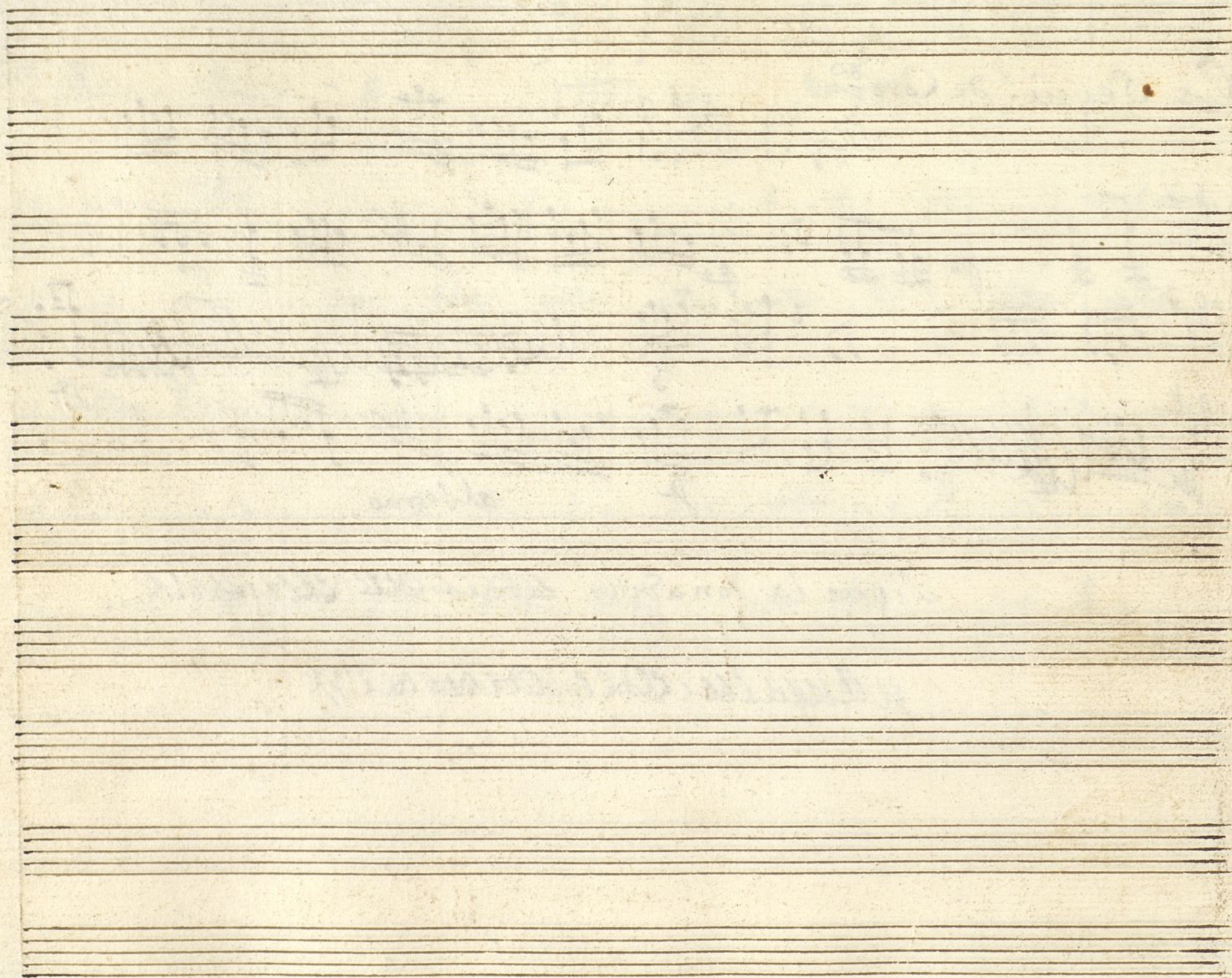
Segui. de Coro 3  
Alleg. 40 3/4

Handwritten musical score for a piece titled "Segui. de Coro 3". The tempo is marked "Alleg. 40" and the time signature is 3/4. The score is written on four staves, all in treble clef and key of D major (two sharps). The notation is highly rhythmic, featuring many sixteenth and thirty-second notes, often beamed together. There are several measures with rests, and some measures are crossed out with a diagonal line. The handwriting is cursive and somewhat messy, typical of a working draft. The word "allegro" is written at the bottom right of the page.

Sigue la tonadilla al Dado del Volcan

у Мадридъ Общества







Trompa Primera, +  
del Sainete. Los Baños del Rio

Bellevue 1765

Mus 59-4

Tota

La mi

Alleg

Nor

70

Se Negre ala voz X

*Neuclaus ~~mult~~ Algebricus de Merlana*

Proposed Sacakavoox

$$v_0/k'$$

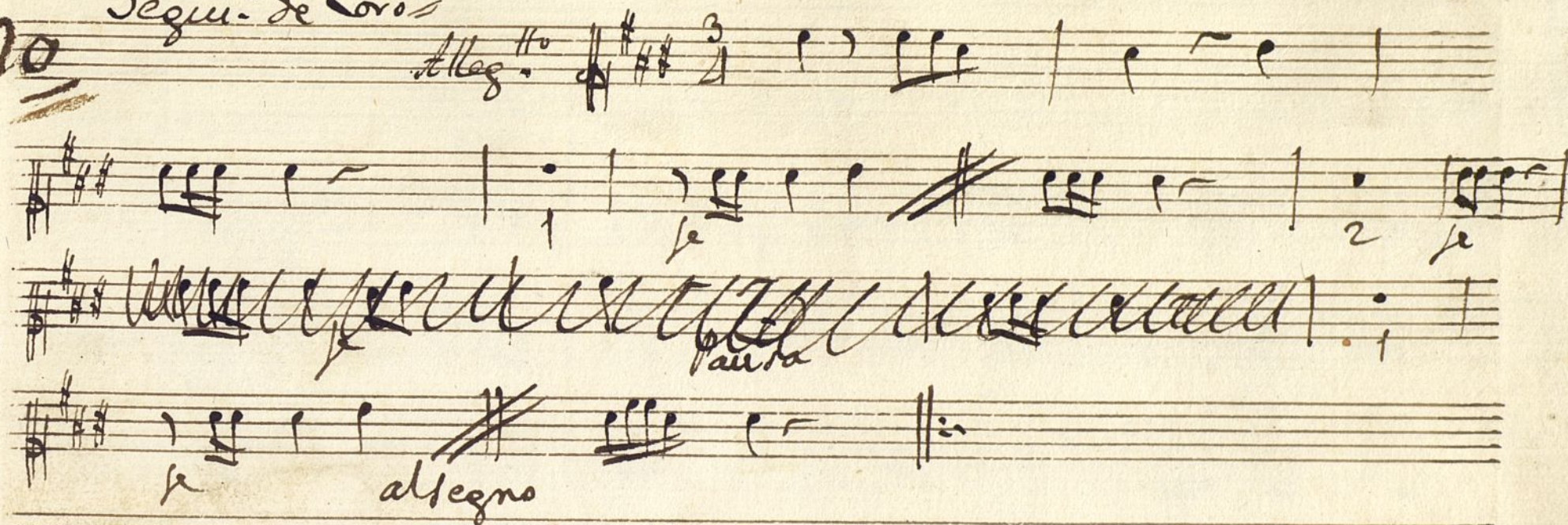


2 No *Al<sup>o</sup> Clarin*  
*Allegro*  $\text{G}\sharp\text{F}\sharp$   $\frac{3}{4}$

*p* *v*



No *Segu.<sup>s</sup> de Coro*



*Sigue la tonadilla a Dúo del Arriero //*

*y luego la Contradanza //*



2



*Trompa Segunda*

del Sainese. Los Baños del Rio

MUS 59-4

Volume 1765

Tota

Clara

*Alleg*

2102

१३

Милостиваго господина  
господина Ивана Ивановича

se Nepite  
ala voz X

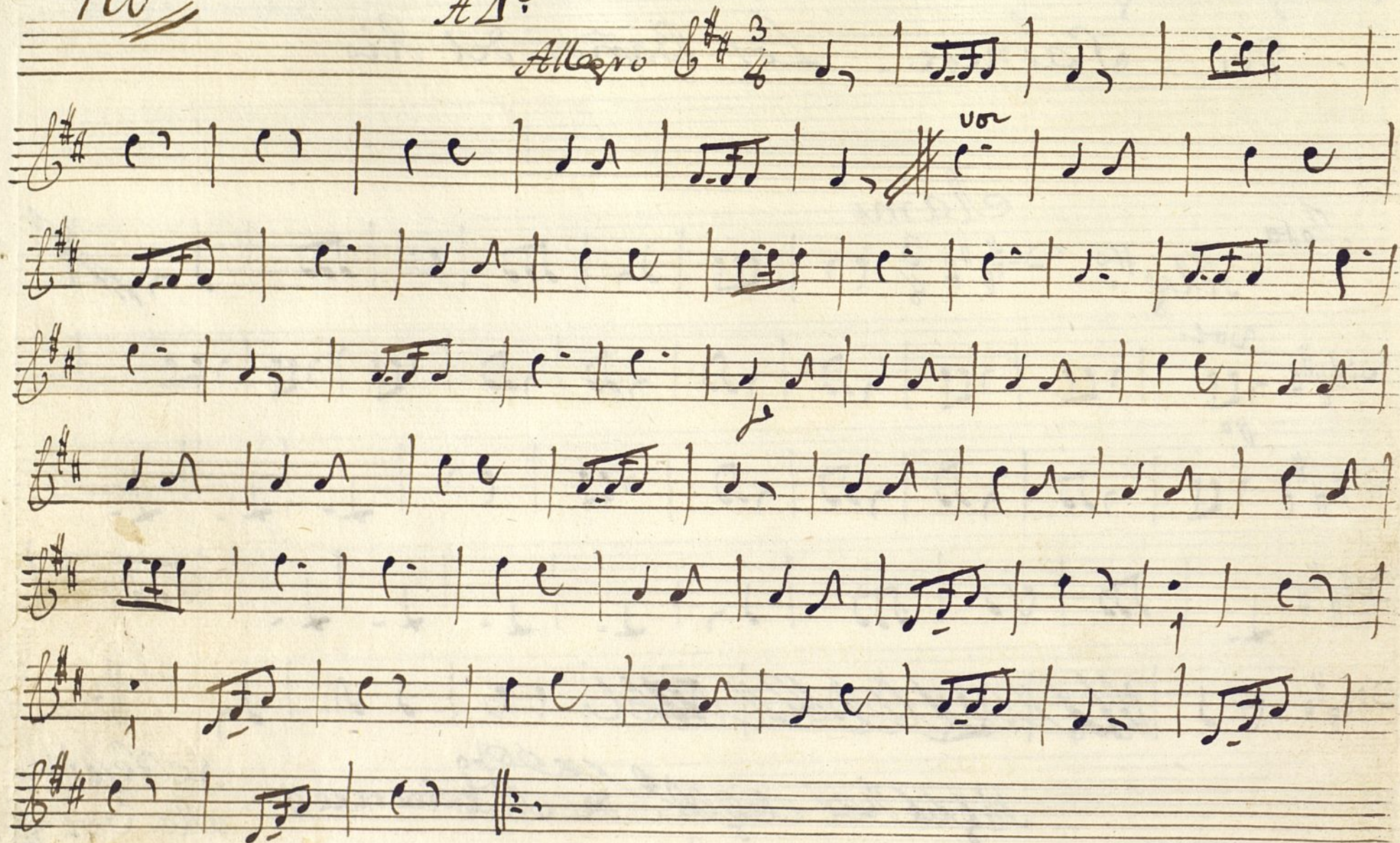
20/2



2 No

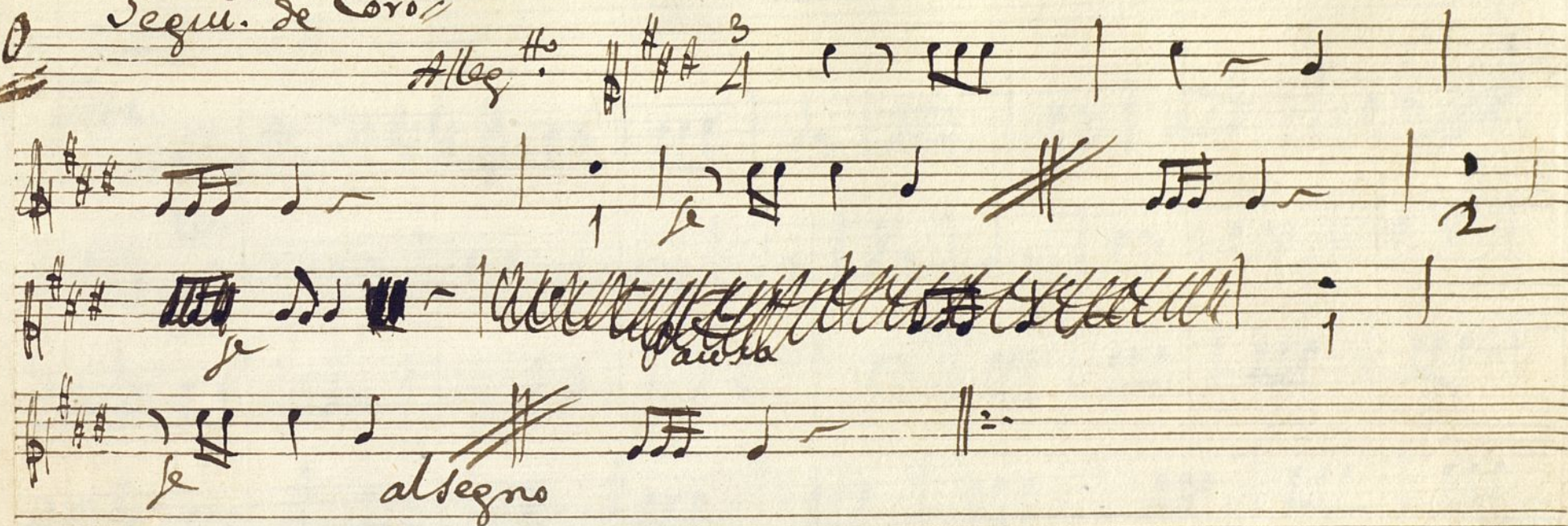
1<sup>o</sup> Clarin

Allargo 3/4





No Segui.<sup>s</sup> de Coro<sup>do</sup>



sigue la tonadilla a Suo del Arriero //

y luego la Contradanza //







Contrabajo y Violon  
del Sainete; Los Baños del Rio

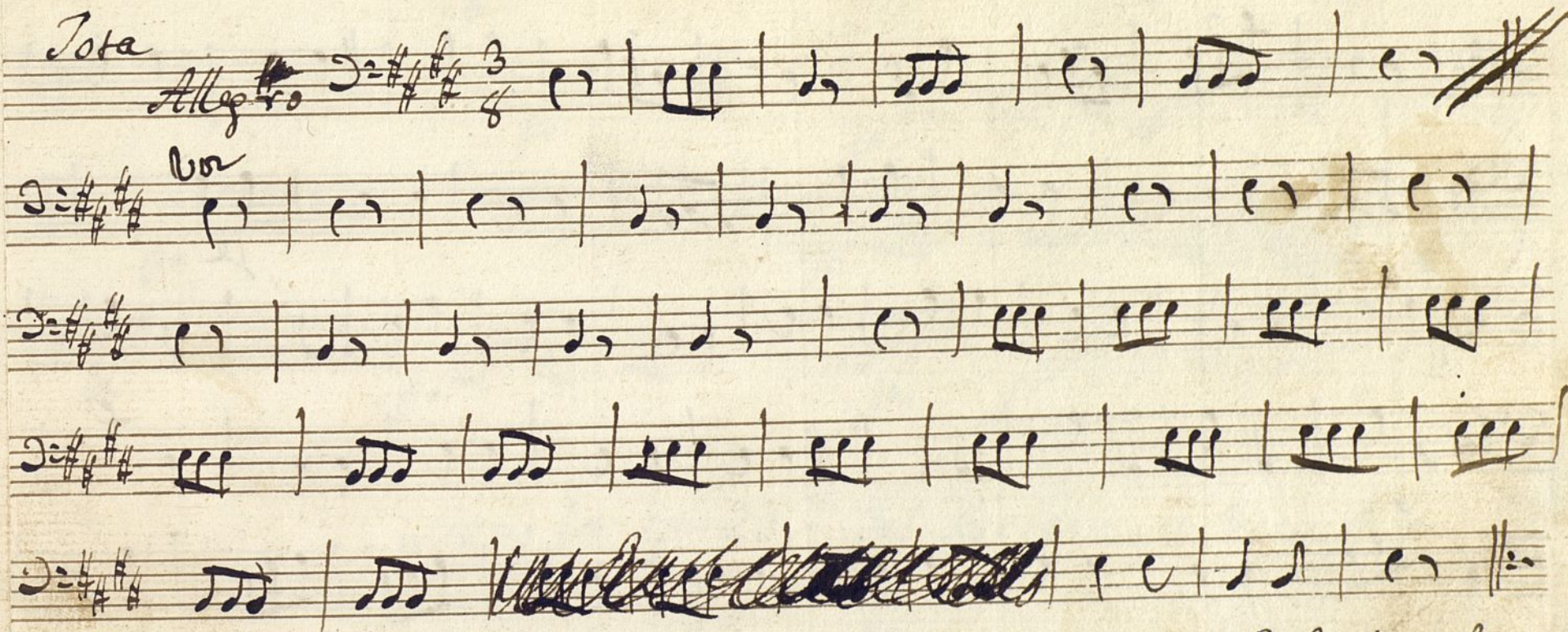
Valencia 1765

Mus. 59-4

Tota

Allegro

$\text{3/8}$



Se Repite alavor

~~Miguel Canalejo. La Merced~~

~~pliego la cosa alda orel~~

Vo/n



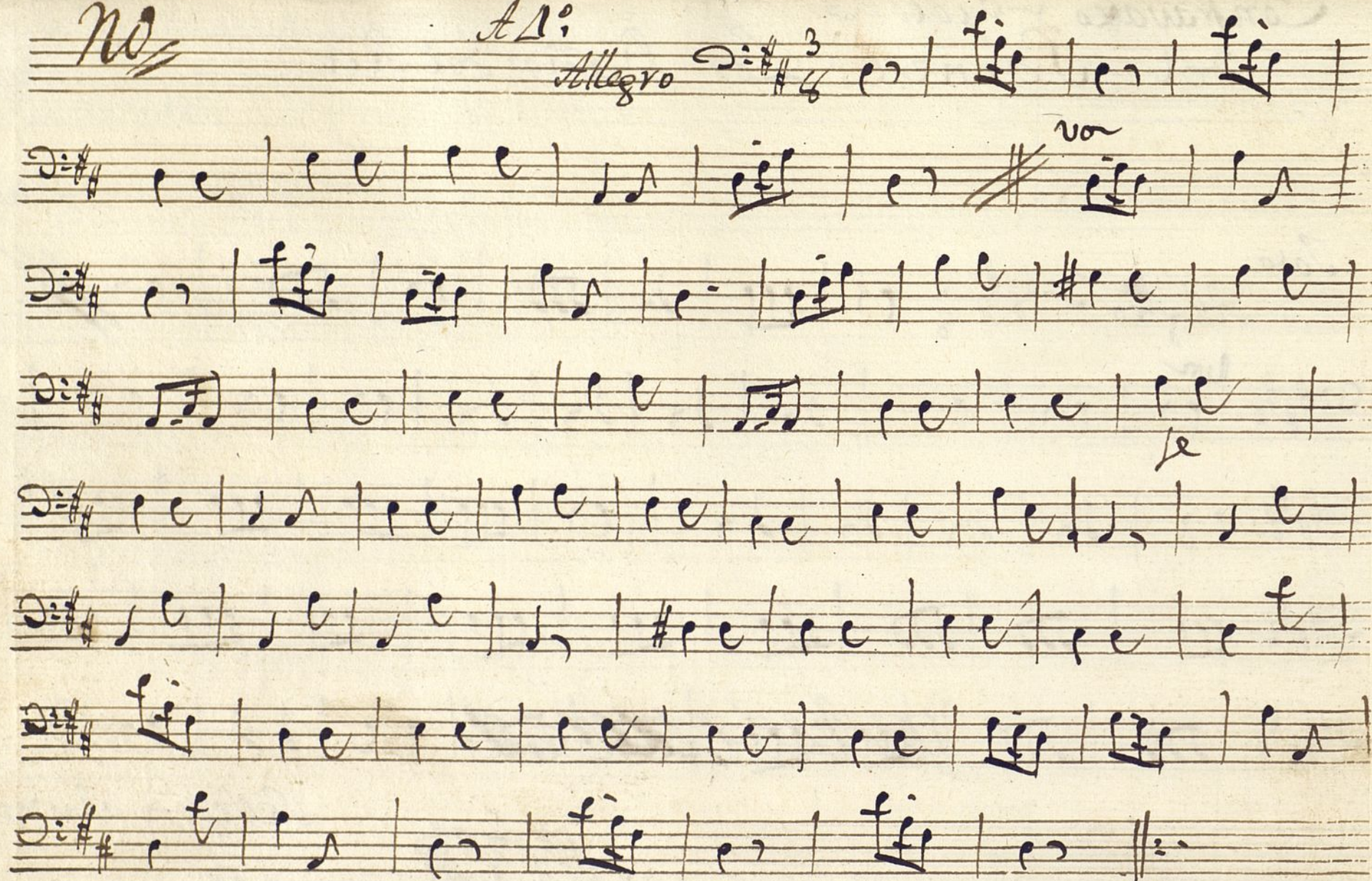
e

No.

Ad.

Allegro

$\text{D}:\sharp\sharp\frac{3}{4}$

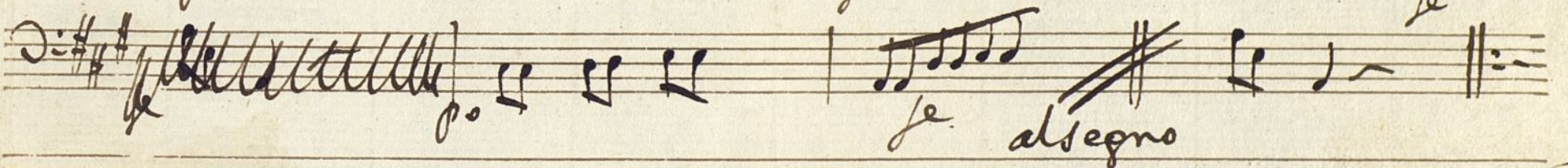
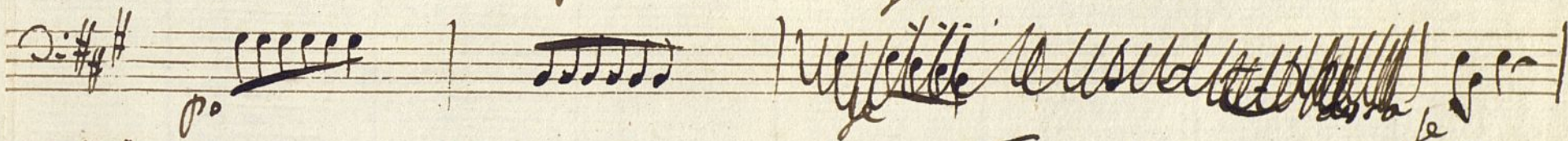
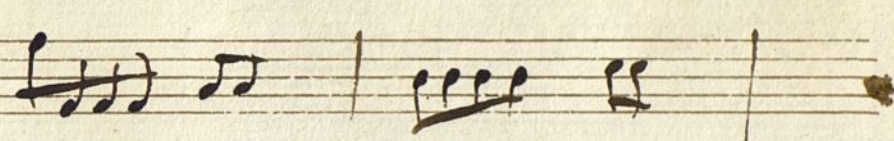




*No. 1* *Segu.º de Coro*

*Alleg.º*

*3/4*



*Sigue la tonad.ª del Arriero. a duo //*

*y luego la Contradanza //*



Ayuntamiento de Madrid 1200063087