

117-16

+ Germana y Mariana

tonadilla a Duo

Pastoral

Nise, y Piteno

del S.^r Marcolini: 1865

+

Handwritten musical score on aged paper, featuring multiple staves and a tempo marking.

The score begins with the tempo marking *Alleg. #* (Allegretto) and a key signature of one sharp (F#). The time signature is 6/4.

The notation includes various musical symbols such as notes, rests, and dynamic markings like *se* (sempre) and *credo* (credo). The score is organized into systems, with some staves grouped by brackets.

The manuscript shows signs of age, including yellowing and some staining.

Eur.^a

Ma Por estos Montes veno Por esta sel ba um bria
Ninguna pena y guela a mi pa sion im pia.

Por esta sel ba um bria a llorar Una au
a mi pa sion im pia noy mucho que a los

sencia devn ingrato omi ci da devn ingra
zelos ay pocos que rre sisten ay pocos

to ò mi ci da --- el cor de ro que bala el gil que
que rre sisten ---

ro que pia el Tũ se nor que canta

ay penas Vigores el Yuiñor que can-ta Lun

los meabi san la traicion: de fi leno de una ingrata que

yameol vi-da y pues en mis tris tezas

no ai a le eri *Andr.* Nise in fe li ze
fi le no in fe liz

gime gime lloray sus pi ra *Andr.* lloray sus pi ra
iel guar ya que

dar tus ar mi ños de a li bio sir, ba y el guar dar tus ar
 tus ex pre siones tan po co es ti man ya que tus ex pre

pena.

mi ños de a li bio sir ba;
 siones tan po co es ti man;

allegro D. C.

And.^{te} Mas

hallie ta q^{ta} Causa si q^{ta} causa mi penas y fa

figas ya! ber la Cari ñosa Cari ñosa dar

la Comi da que toman los Cor deros de su ma ni

tas. de to das sus Kai ziones mi amor se olvida de to

da sus Kai ciones mi amor se olvida Cor de ri llo ala

gueño a la gueño que a mi se in cli - nas ya que tan

to te gus tan si te gus tan mis ex pre sio nes fi nas

M.^a

dime que lo que quieres Con tus cari cias en re

ñar te a que seas a gra de zi da en se ñar te a que

seas a gra de zi da;

Alleg.^{ro} *Euz.^a*

fi le no mio a do rado que è con se guido esta

M.^a *Euz.^a*

dicha ay in fe lize fi le - no por que sus

M.^a

piras Por quel alma que no es tuia tienes Con otro par

Allegro

tida tienes Con otro par tida no lo creas ea

Euc.^a *M.^a* *Euc.^a*

calla que siempre soi tu — ya quita las

M.^a

que fas que tie — nes fi le no me expli — ca; que daras si me

Euc.^a

o — yes ri se con Venci — da sientate y veras

pron - to que te amo ~~muu~~ fina;

La primera es que de
 Mas solo para de

rigio fa bo re cias fa bo re ci - as. Dime el men
 ri gio son tus Ca ricias son tus cari - cas, que esa es men

tira aunque fue amor primero aunque fue amor pri
 ti va pues que siempre fui tuia pues que siempre fui

mero ya no ai ce ni zas Ma quien Con fiera que
 tuia mi voz ph bi ca Ma haora es to i sa tis

quise su amor Con firma su amor Confirma dime e men
 fe cho. ^{Quede a Dios mi} vi da a ^{Quede a Dios mi} vi da ^{Quede a Dios mi} vi da

tira? Con fesar ei e fecto Con fesar ei e
^{Quede a Dios mi} vi da ^{Quede a Dios mi} vi da ^{Quede a Dios mi} vi da

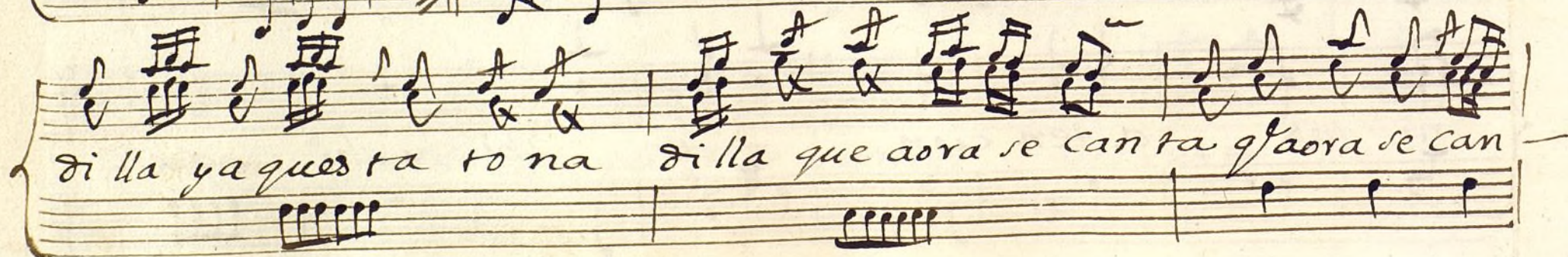
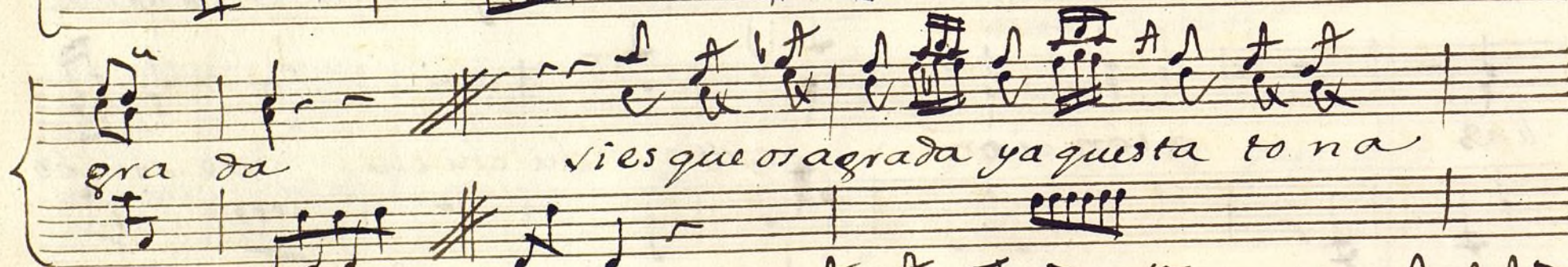
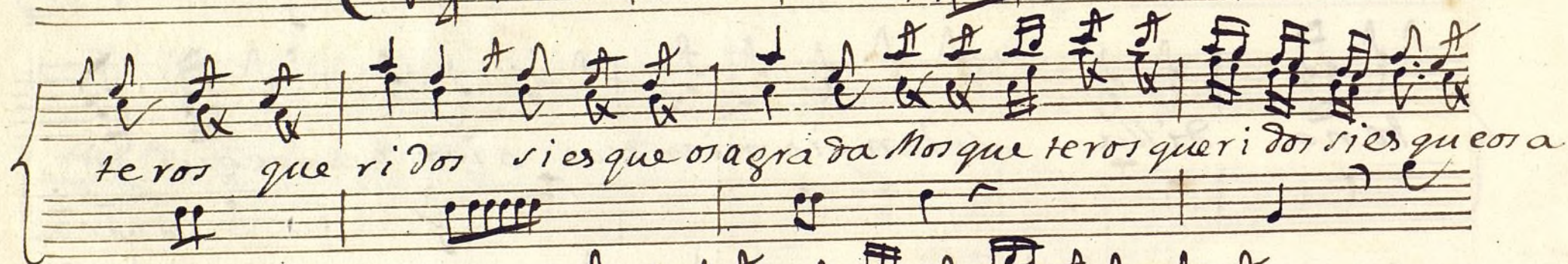
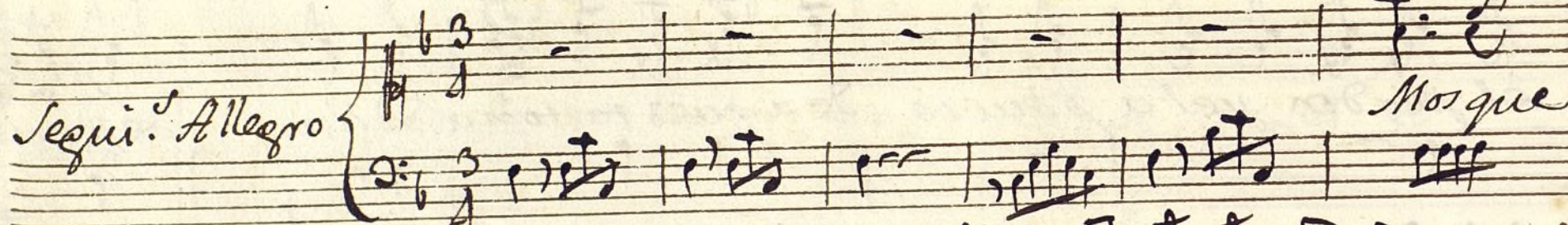
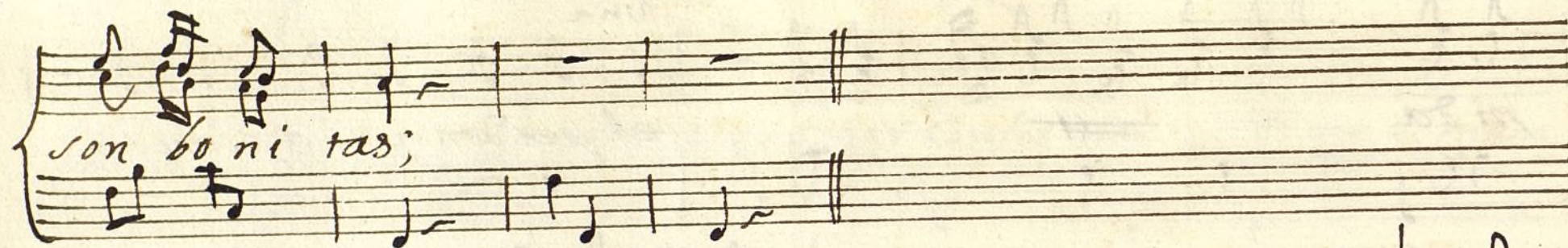
fecto de arrepen ti da ^{allegro}
 nado y tu ^{Quede a Dios mi} vi da ^{Quede a Dios mi} vi da

pero antes que nos ^{Allegro}

Vamos pero antes que nos vamos el justo que se

Handwritten musical score for a song, featuring five systems of staves with lyrics in Spanish. The lyrics include "pida", "el perdon y el aplauso", "de aquesta tona dilla", "silencio mientras oien las segui di", "nas atencion", "chi chi chi, que son bo", "ni tas atencion", and "chi chi chi que". The notation includes various musical symbols such as notes, rests, and bar lines, with some systems having a double bar line and a sharp sign (#) indicating a key signature change.

Una
pida el perdon y el aplauso
el perdon y el aplauso de aquesta tona dilla de aquesta
tona dilla silencio mientras oien las segui di
nas atencion chi chi chi, que son bo
ni tas atencion chi chi chi que



Alleg^{ro} Ma. *que?* *Bien*

ta e... yo e de que ver se Pas to ra mia

Alleg^{ro} *A*

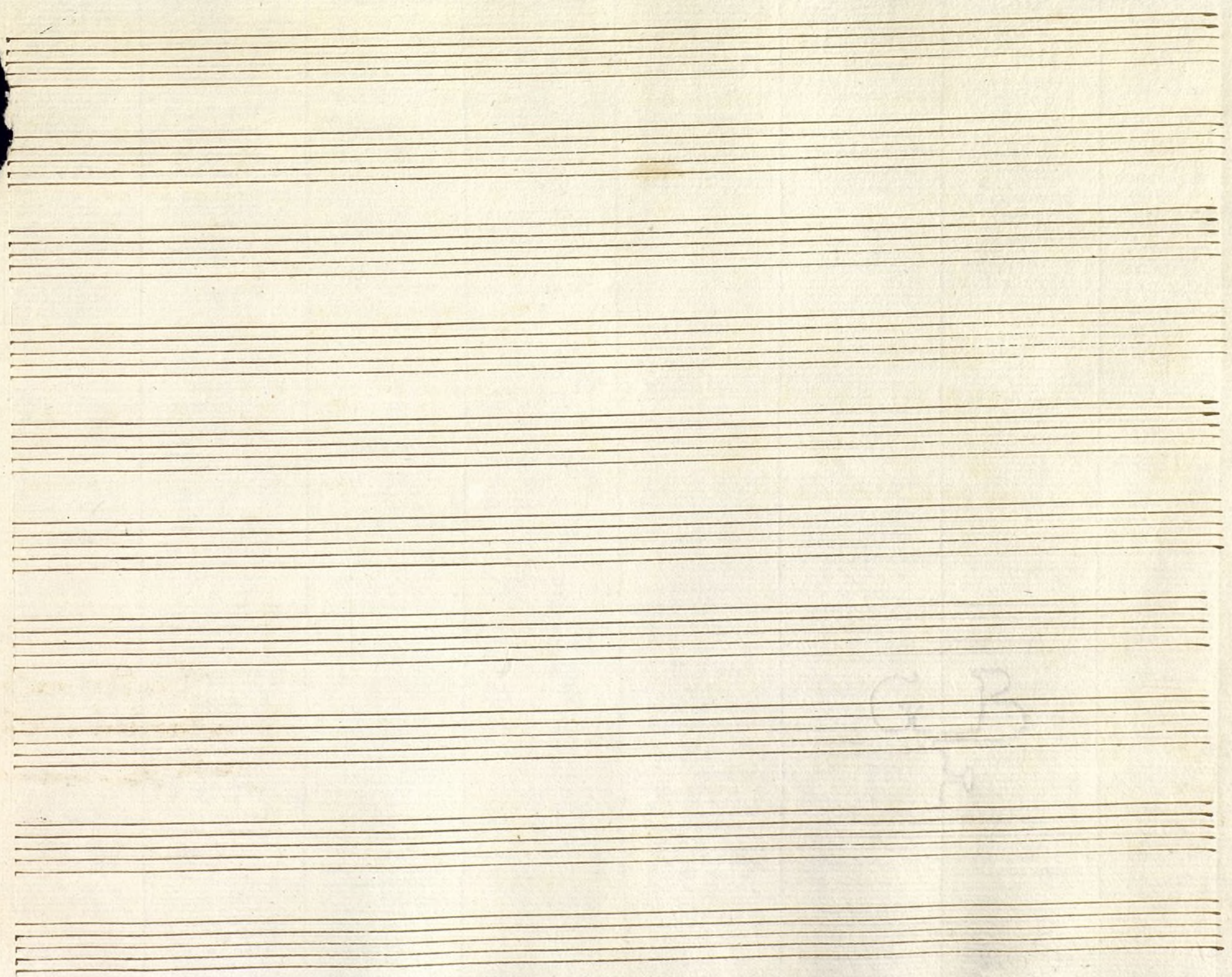
pues por si sola tengo yo vida

que bien yo e de pa

que? *bien* *que* *A*

garse siempre tan fina quel pecho mues tre lo que tes

der
ne
/



Ayuntamiento de Madrid

Violin Primero. tonadilla âduo

Nirey filens,

Mus 117-16

Handwritten musical score for a piece titled "Allegro". The score is written on ten staves. The first staff begins with the tempo marking "Allegro" and a key signature of one sharp (F#). The time signature is 6/8. The music features a variety of note values, including eighth and sixteenth notes, and rests. Dynamic markings such as "p" (piano), "f" (forte), "cresc." (crescendo), and "dim." (diminuendo) are used throughout. The score includes several repeat signs and a double bar line. The final staff ends with the instruction "al segno" and the word "Volte" (times).

no *Allegro* *Pro* *2* *3* *vor* *p* *allegro*

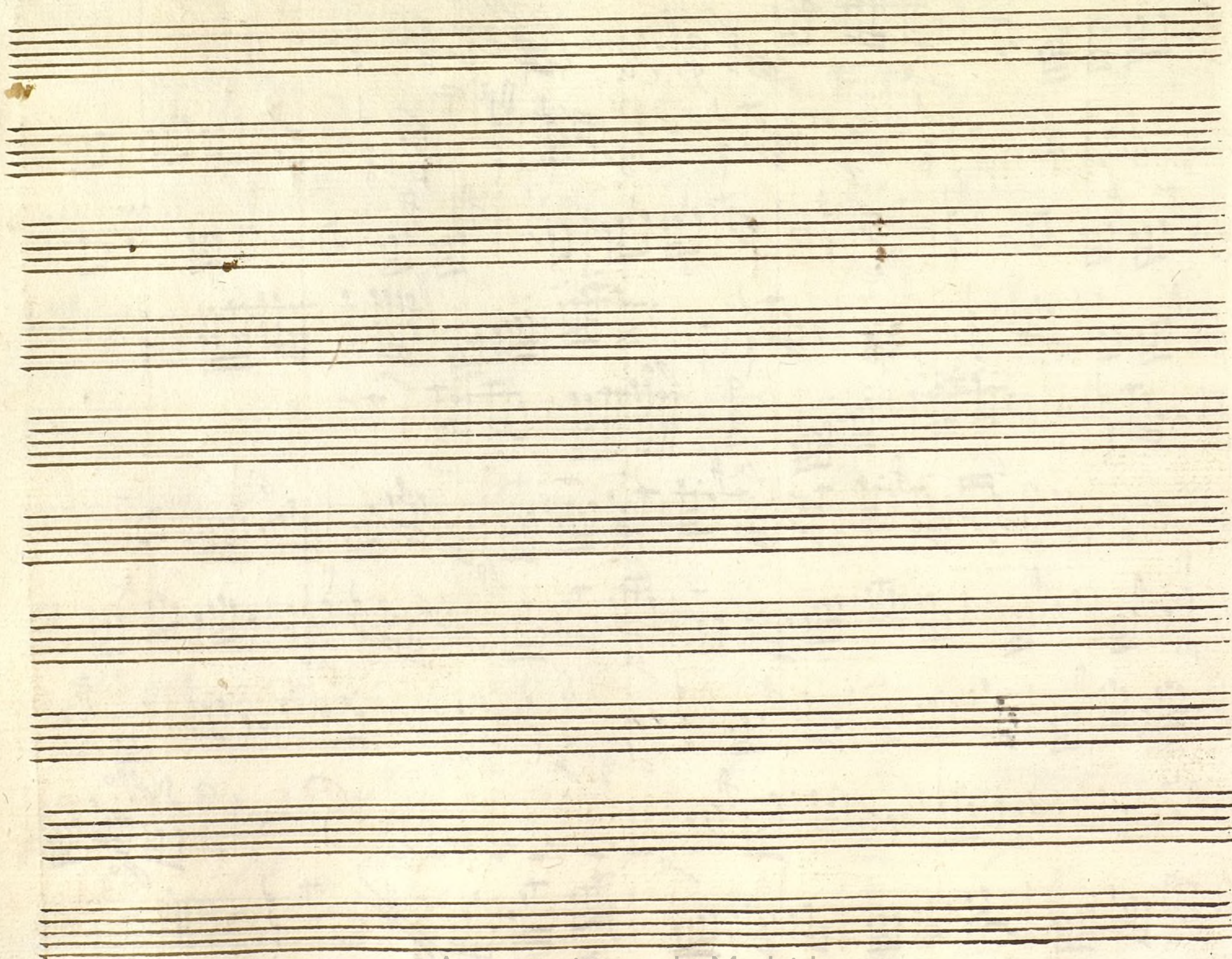
The first system of the handwritten musical score consists of three staves. The top staff begins with a treble clef, a key signature of two sharps (F# and C#), and a 2/4 time signature. It contains several measures of music with complex rhythmic patterns, including triplets and sixteenth notes. The middle and bottom staves also contain musical notation, with the bottom staff ending with a double bar line and the word 'allegro' written below it.

Andr *6* *8* *Att.*

The second system of the handwritten musical score consists of three staves. The top staff begins with a treble clef, a key signature of one sharp (F#), and a 6/8 time signature. It contains several measures of music with complex rhythmic patterns, including triplets and sixteenth notes. The middle and bottom staves also contain musical notation, with the bottom staff ending with a double bar line.

Coplas *Andr* *3* *4* *p*

The third system of the handwritten musical score consists of three staves. The top staff begins with a treble clef, a key signature of one sharp (F#), and a 3/4 time signature. It contains several measures of music with complex rhythmic patterns, including triplets and sixteenth notes. The middle and bottom staves also contain musical notation, with the bottom staff ending with a double bar line.



Ayuntamiento de Madrid

Handwritten musical score for the first system, featuring two staves. The first staff begins with a treble clef, a key signature of one sharp (F#), and a 2/4 time signature. The music consists of eighth and sixteenth notes, with some triplets indicated by a '3' over the notes. The second staff continues the melody with similar rhythmic patterns and includes a 'p' (piano) dynamic marking.

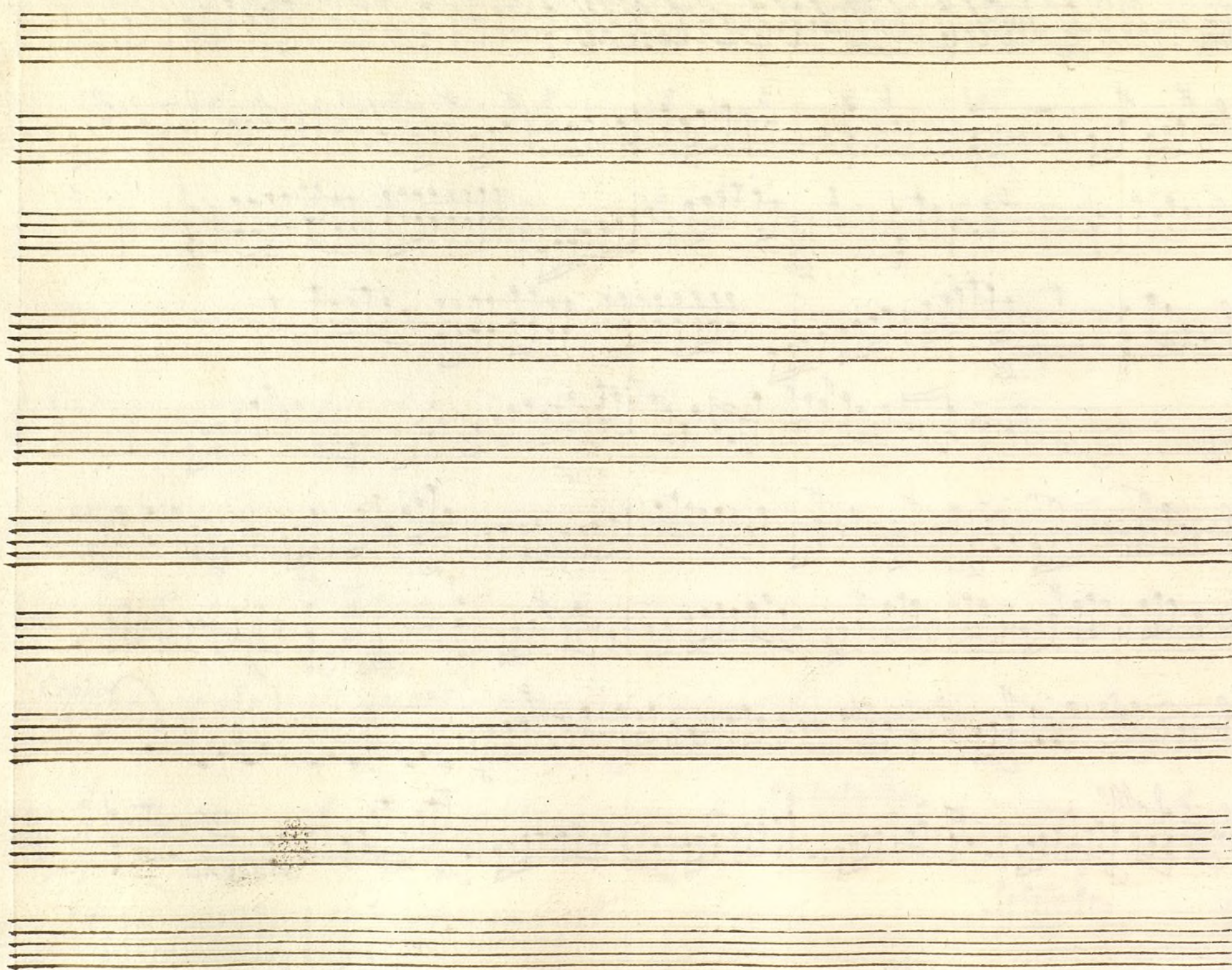
Handwritten musical score for the second system, featuring two staves. The first staff begins with a treble clef, a key signature of one flat (Bb), and a 6/8 time signature. The music includes a 'p' (piano) dynamic marking and a 'f' (forte) dynamic marking. The second staff continues the melody with similar rhythmic patterns and includes a 'p' (piano) dynamic marking.

Handwritten musical score for the third system, featuring two staves. The first staff begins with a treble clef, a key signature of one flat (Bb), and a 3/4 time signature. The music includes a 'p' (piano) dynamic marking and a 'f' (forte) dynamic marking. The second staff continues the melody with similar rhythmic patterns and includes a 'p' (piano) dynamic marking. The system concludes with a double bar line and a 'f' (forte) dynamic marking.

Allegro $\text{no } \text{2} \text{ } \text{4}$ Voz

Seguir *Allegro* $\text{3} \text{ } \text{4}$

Allegro $\text{6} \text{ } \text{8}$ *al segno*

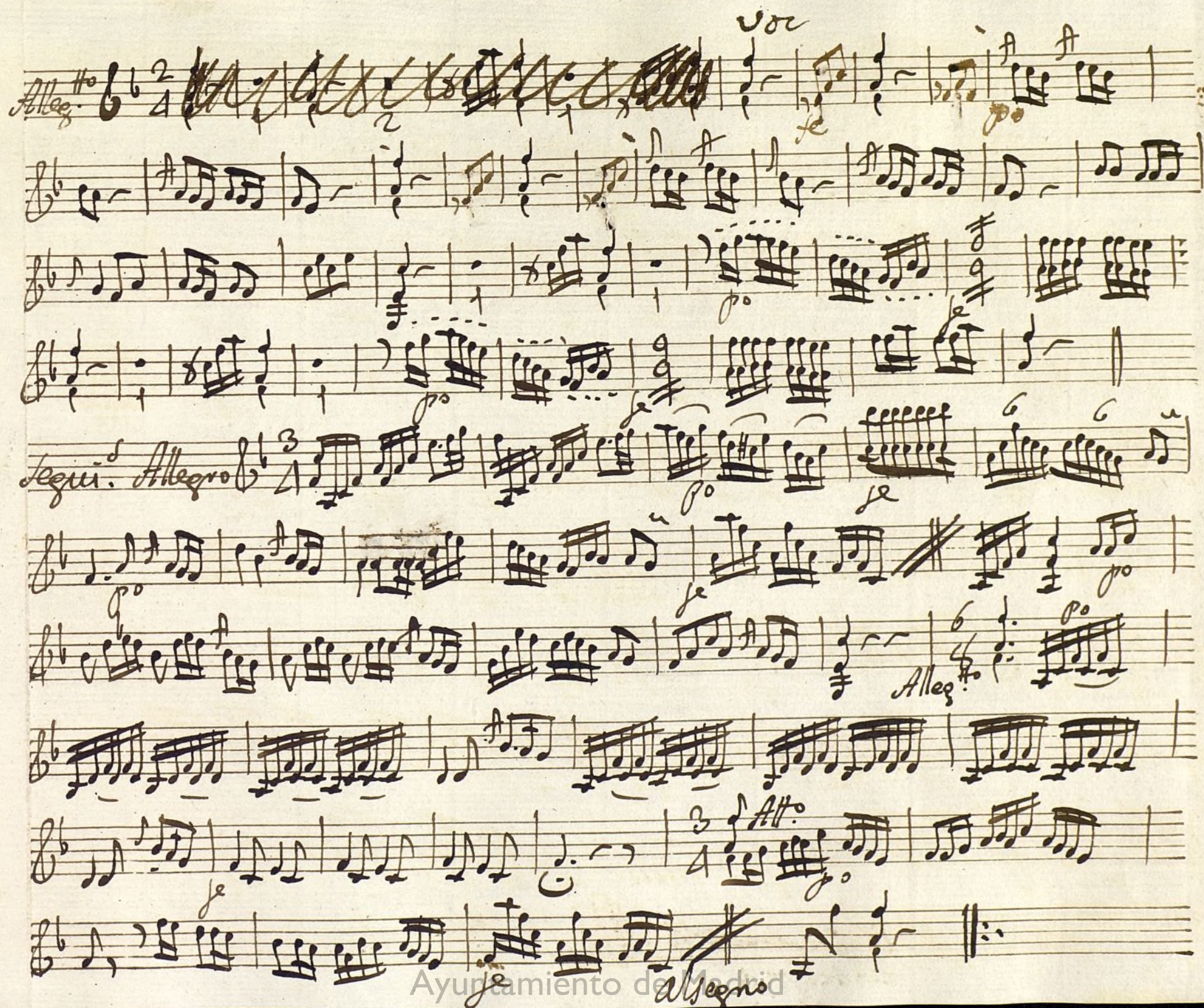


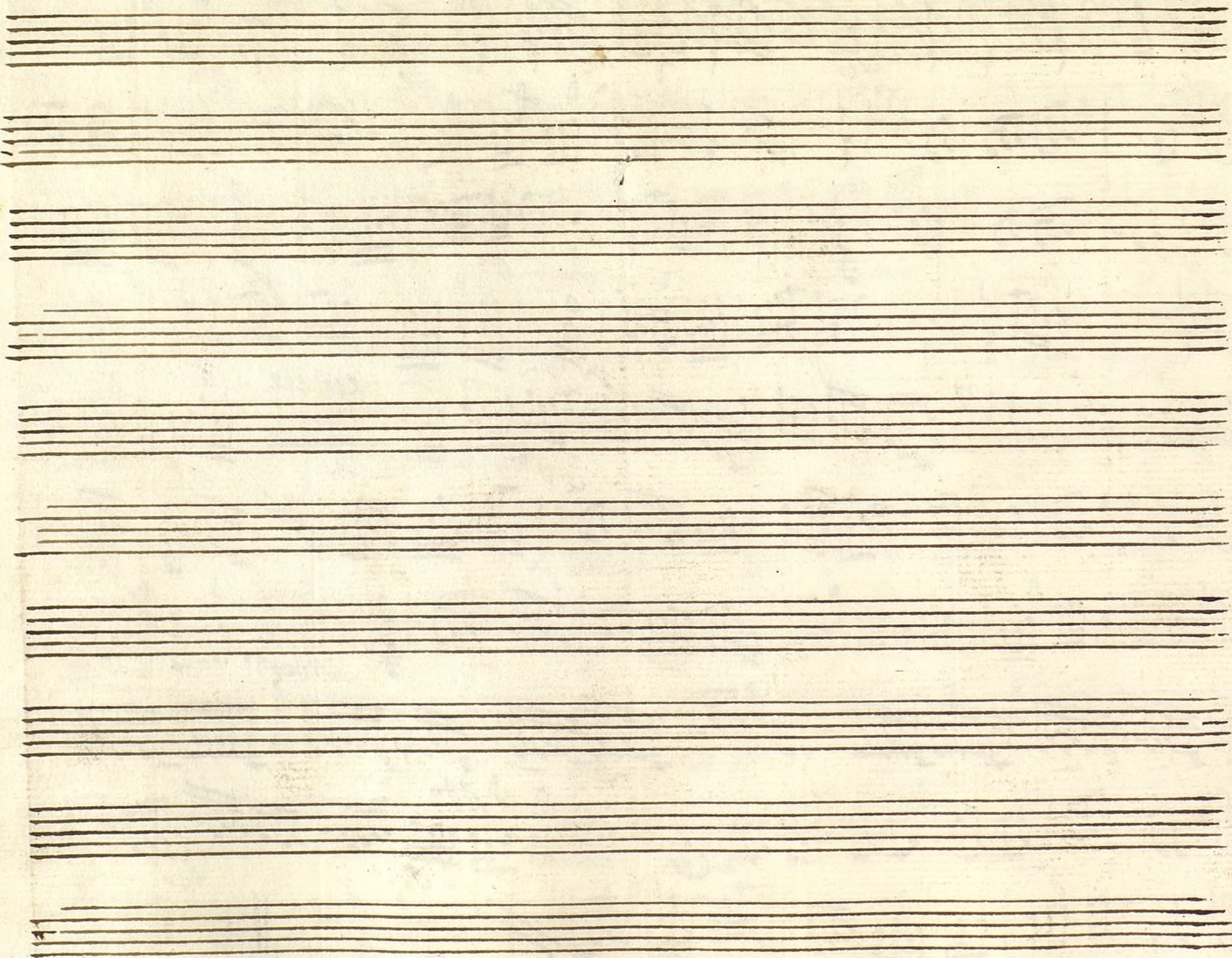
Ayuntamiento de Madrid

Alleg. poco *no* *2* *3* *3* *no* *po.* *allegro*

Alleg. *6* *8*

Coplas And. *3* *allegro*





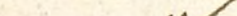
Ayuntamiento de Madrid

Joe y Laura

+ *tonadilla adus Niseyfilens*

Allegretto

Handwritten musical score for a piece titled "Allegretto". The score is written on ten staves, featuring a melody with various dynamics (p, f, mf, cresc., decresc.) and articulation (accents, slurs). The piece concludes with a 3/4 time signature change and the marking "Andr.".

 *allegro*

Vol 14

Mus. 117-16

Alaura
Alleg. Ho *2* *4* *1* *2* *3* *4* *5* *6* *7* *8* *9* *10* *11* *12* *13* *14* *15* *16* *17* *18* *19* *20* *21* *22* *23* *24* *25* *26* *27* *28* *29* *30* *31* *32* *33* *34* *35* *36* *37* *38* *39* *40* *41* *42* *43* *44* *45* *46* *47* *48* *49* *50* *51* *52* *53* *54* *55* *56* *57* *58* *59* *60* *61* *62* *63* *64* *65* *66* *67* *68* *69* *70* *71* *72* *73* *74* *75* *76* *77* *78* *79* *80* *81* *82* *83* *84* *85* *86* *87* *88* *89* *90* *91* *92* *93* *94* *95* *96* *97* *98* *99* *100* *101* *102* *103* *104* *105* *106* *107* *108* *109* *110* *111* *112* *113* *114* *115* *116* *117* *118* *119* *120* *121* *122* *123* *124* *125* *126* *127* *128* *129* *130* *131* *132* *133* *134* *135* *136* *137* *138* *139* *140* *141* *142* *143* *144* *145* *146* *147* *148* *149* *150* *151* *152* *153* *154* *155* *156* *157* *158* *159* *160* *161* *162* *163* *164* *165* *166* *167* *168* *169* *170* *171* *172* *173* *174* *175* *176* *177* *178* *179* *180* *181* *182* *183* *184* *185* *186* *187* *188* *189* *190* *191* *192* *193* *194* *195* *196* *197* *198* *199* *200* *201* *202* *203* *204* *205* *206* *207* *208* *209* *210* *211* *212* *213* *214* *215* *216* *217* *218* *219* *220* *221* *222* *223* *224* *225* *226* *227* *228* *229* *230* *231* *232* *233* *234* *235* *236* *237* *238* *239* *240* *241* *242* *243* *244* *245* *246* *247* *248* *249* *250* *251* *252* *253* *254* *255* *256* *257* *258* *259* *260* *261* *262* *263* *264* *265* *266* *267* *268* *269* *270* *271* *272* *273* *274* *275* *276* *277* *278* *279* *280* *281* *282* *283* *284* *285* *286* *287* *288* *289* *290* *291* *292* *293* *294* *295* *296* *297* *298* *299* *300* *301* *302* *303* *304* *305* *306* *307* *308* *309* *310* *311* *312* *313* *314* *315* *316* *317* *318* *319* *320* *321* *322* *323* *324* *325* *326* *327* *328* *329* *330* *331* *332* *333* *334* *335* *336* *337* *338* *339* *340* *341* *342* *343* *344* *345* *346* *347* *348* *349* *350* *351* *352* *353* *354* *355* *356* *357* *358* *359* *360* *361* *362* *363* *364* *365* *366* *367* *368* *369* *370* *371* *372* *373* *374* *375* *376* *377* *378* *379* *380* *381* *382* *383* *384* *385* *386* *387* *388* *389* *390* *391* *392* *393* *394* *395* *396* *397* *398* *399* *400* *401* *402* *403* *404* *405* *406* *407* *408* *409* *410* *411* *412* *413* *414* *415* *416* *417* *418* *419* *420* *421* *422* *423* *424* *425* *426* *427* *428* *429* *430* *431* *432* *433* *434* *435* *436* *437* *438* *439* *440* *441* *442* *443* *444* *445* *446* *447* *448* *449* *450* *451* *452* *453* *454* *455* *456* *457* *458* *459* *460* *461* *462* *463* *464* *465* *466* *467* *468* *469* *470* *471* *472* *473* *474* *475* *476* *477* *478* *479* *480* *481* *482* *483* *484* *485* *486* *487* *488* *489* *490* *491* *492* *493* *494* *495* *496* *497* *498* *499* *500* *501* *502* *503* *504* *505* *506* *507* *508* *509* *510* *511* *512* *513* *514* *515* *516* *517* *518* *519* *520* *521* *522* *523* *524* *525* *526* *527* *528* *529* *530* *531* *532* *533* *534* *535* *536* *537* *538* *539* *540* *541* *542* *543* *544* *545* *546* *547* *548* *549* *550* *551* *552* *553* *554* *555* *556* *557* *558* *559* *560* *561* *562* *563* *564* *565* *566* *567* *568* *569* *570* *571* *572* *573* *574* *575* *576* *577* *578* *579* *580* *581* *582* *583* *584* *585* *586* *587* *588* *589* *590* *591* *592* *593* *594* *595* *596* *597* *598* *599* *600* *601* *602* *603* *604* *605* *606* *607* *608* *609* *610* *611* *612* *613* *614* *615* *616* *617* *618* *619* *620* *621* *622* *623* *624* *625* *626* *627* *628* *629* *630* *631* *632* *633* *634* *635* *636* *637* *638* *639* *640* *641* *642* *643* *644* *645* *646* *647* *648* *649* *650* *651* *652* *653* *654* *655* *656* *657* *658* *659* *660* *661* *662* *663* *664* *665* *666* *667* *668* *669* *670* *671* *672* *673* *674* *675* *676* *677* *678* *679* *680* *681* *682* *683* *684* *685* *686* *687* *688* *689* *690* *691* *692* *693* *694* *695* *696* *697* *698* *699* *700* *701* *702* *703* *704* *705* *706* *707* *708* *709* *710* *711* *712* *713* *714* *715* *716* *717* *718* *719* *720* *721* *722* *723* *724* *725* *726* *727* *728* *729* *730* *731* *732* *733* *734* *735* *736* *737* *738* *739* *740* *741* *742* *743* *744* *745* *746* *747* *748* *749* *750* *751* *752* *753* *754* *755* *756* *757* *758* *759* *760* *761* *762* *763* *764* *765* *766* *767* *768* *769* *770* *771* *772* *773* *774* *775* *776* *777* *778* *779* *780* *781* *782* *783* *784* *785* *786* *787* *788* *789* *790* *791* *792* *793* *794* *795* *796* *797* *798* *799* *800* *801* *802* *803* *804* *805* *806* *807* *808* *809* *810* *811* *812* *813* *814* *815* *816* *817* *818* *819* *820* *821* *822* *823* *824* *825* *826* *827* *828* *829* *830* *831* *832* *833* *834* *835* *836* *837* *838* *839* *840* *841* *842* *843* *844* *845* *846* *847* *848* *849* *850* *851* *852* *853* *854* *855* *856* *857* *858* *859* *860* *861* *862* *863* *864* *865* *866* *867* *868* *869* *870* *871* *872* *873* *874* *875* *876* *877* *878* *879* *880* *881* *882* *883* *884* *885* *886* *887* *888* *889* *890* *891* *892* *893* *894* *895* *896* *897* *898* *899* *900* *901* *902* *903* *904* *905* *906* *907* *908* *909* *910* *911* *912* *913* *914* *915* *916* *917* *918* *919* *920* *921* *922* *923* *924* *925* *926* *927* *928* *929* *930* *931* *932* *933* *934* *935* *936* *937* *938* *939* *940* *941* *942* *943* *944* *945* *946* *947* *948* *949* *950* *951* *952* *953* *954* *955* *956* *957* *958* *959* *960* *961* *962* *963* *964* *965* *966* *967* *968* *969* *970* *971* *972* *973* *974* *975* *976* *977* *978* *979* *980* *981* *982* *983* *984* *985* *986* *987* *988* *989* *990* *991* *992* *993* *994* *995* *996* *997* *998* *999* *1000* *1001* *1002* *1003* *1004* *1005* *1006* *1007* *1008* *1009* *1010* *1011* *1012* *1013* *1014* *1015* *1016* *1017* *1018* *1019* *1020* *1021* *1022* *1023* *1024* *1025* *1026* *1027* *1028* *1029* *1030* *1031* *1032* *1033* *1034* *1035* *1036* *1037* *1038* *1039* *1040* *1041* *1042* *1043* *1044* *1045* *1046* *1047* *1048* *1049* *1050* *1051* *1052* *1053* *1054* *1055* *1056* *1057* *1058* *1059* *1060* *1061* *1062* *1063* *1064* *1065* *1066* *1067* *1068* *1069* *1070* *1071* *1072* *1073* *1074* *1075* *1076* *1077* *1078* *1079* *1080* *1081* *1082* *1083* *1084* *1085* *1086* *1087* *1088* *1089* *1090* *1091* *1092* *1093* *1094* *1095* *1096* *1097* *1098* *1099* *1100* *1101* *1102* *1103* *1104* *1105* *1106* *1107* *1108* *1109* *1110* *1111* *1112* *1113* *1114* *1115* *1116* *1117* *1118* *1119* *1120* *1121* *1122* *1123* *1124* *1125* *1126* *1127* *1128* *1129* *1130* *1131* *1132* *1133* *1134* *1135* *1136* *1137* *1138* *1139* *1140* *1141* *1142* *1143* *1144* *1145* *1146* *1147* *1148* *1149* *1150* *1151* *1152* *1153* *1154* *1155* *1156* *1157* *1158* *1159* *1160* *1161* *1162* *1163* *1164* *1165* *1166* *1167* *1168* *1169* *1170* *1171* *1172* *1173* *1174* *1175* *1176* *1177* *1178* *1179* *1180* *1181* *1182* *1183* *1184* *1185* *1186* *1187* *1188* *1189* *1190* *1191* *1192* *1193* *1194* *1195* *1196* *1197* *1198* *1199* *1200* *1201* *1202* *1203* *1204* *1205* *1206* *1207* *1208* *1209* *1210* *1211* *1212* *1213* *1214* *1215* *1216* *1217* *1218* *1219* *1220* *1221* *1222* *1223* *1224* *1225* *1226* *1227* *1228* *1229* *1230* *1231* *1232* *1233* *1234* *1235* *1236* *1237* *1238* *1239* *1240* *1241* *1242* *1243* *1244* *1245* *1246* *1247* *1248* *1249* *1250* *1251* *1252* *1253* *1254* *1255* *1256* *1257* *1258* *1259* *1260* *1261* *1262* *1263* *1264* *1265* *1266* *1267* *1268* *1269* *1270* *1271* *1272* *1273* *1274* *1275* *1276* *1277* *1278* *1279* *1280* *1281* *1282* *1283* *1284* *1285* *1286* *1287* *1288* *1289* *1290* *1291* *1292* *1293* *1294* *1295* *1296* *1297* *1298* *1299* *1300* *1301* *1302* *1303* *1304* *1305* *1306* *1307* *1308* *1309* *1310* *1311* *1312* *1313* *1314* *1315* *1316* *1317* *1318* *1319* *1320* *1321* *1322* *1323* *1324* *1325* *1326* *1327* *1328* *1329* *1330* *1331* *1332* *1333* *1334* *1335* *1336* *1337* *1338* *1339* *1340* *1341* *1342* *1343* <

Handwritten musical score on ten staves. The notation includes various musical symbols such as notes, rests, and dynamic markings. The score is written in a single system across the staves.

Key markings and annotations include:

- Segui. Allegro* (written above the fourth staff)
- oboe* (written above the fourth staff)
- Allegro* (written above the sixth staff)
- Je* (written above the sixth staff)
- Je* (written above the seventh staff)
- Je* (written above the eighth staff)
- Je* (written above the ninth staff)
- allegro* (written below the ninth staff)

The score concludes with a double bar line on the ninth staff. The bottom two staves are empty.

Fla

Oboe Segundo. tonadilla + adus Pastoral; Mus 117-16

Flauta

Handwritten musical score for Oboe Segundo, Flauta, and Violin. The score is written on ten staves. The first staff is marked "Alleg. Ho" and "Flauta". The second staff is marked "Oboe Segundo". The third staff is marked "Violin". The score includes various musical notations such as notes, rests, and dynamic markings like "p", "f", "p^o", "f^o", "p^o tenu.", "p^o nor", "p^o And^{te}", and "allegro". The score is written in a single system, with the key signature changing from C major to B-flat major in the final section. The final section is marked "allegro" and "Violin".

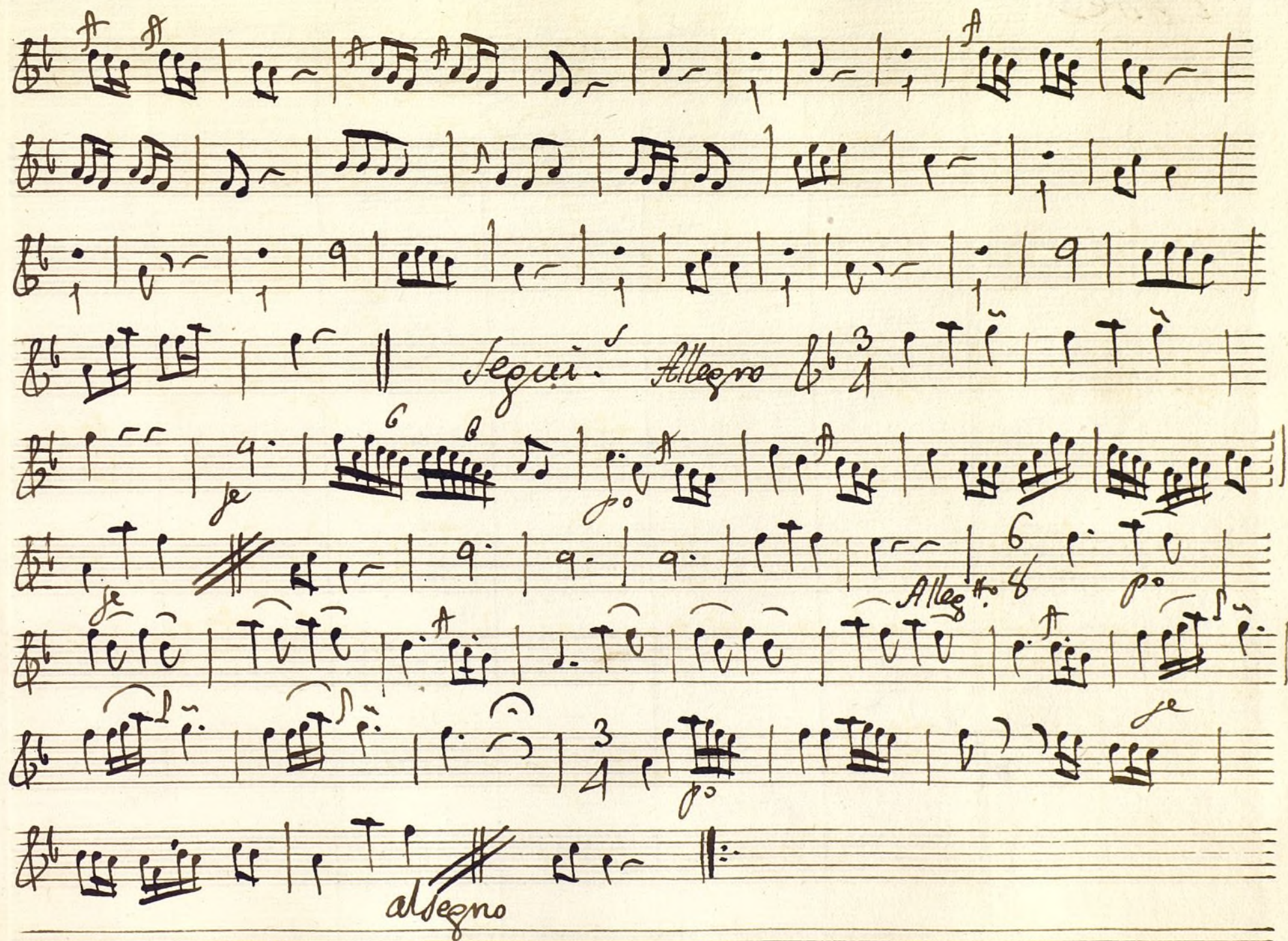
Violin

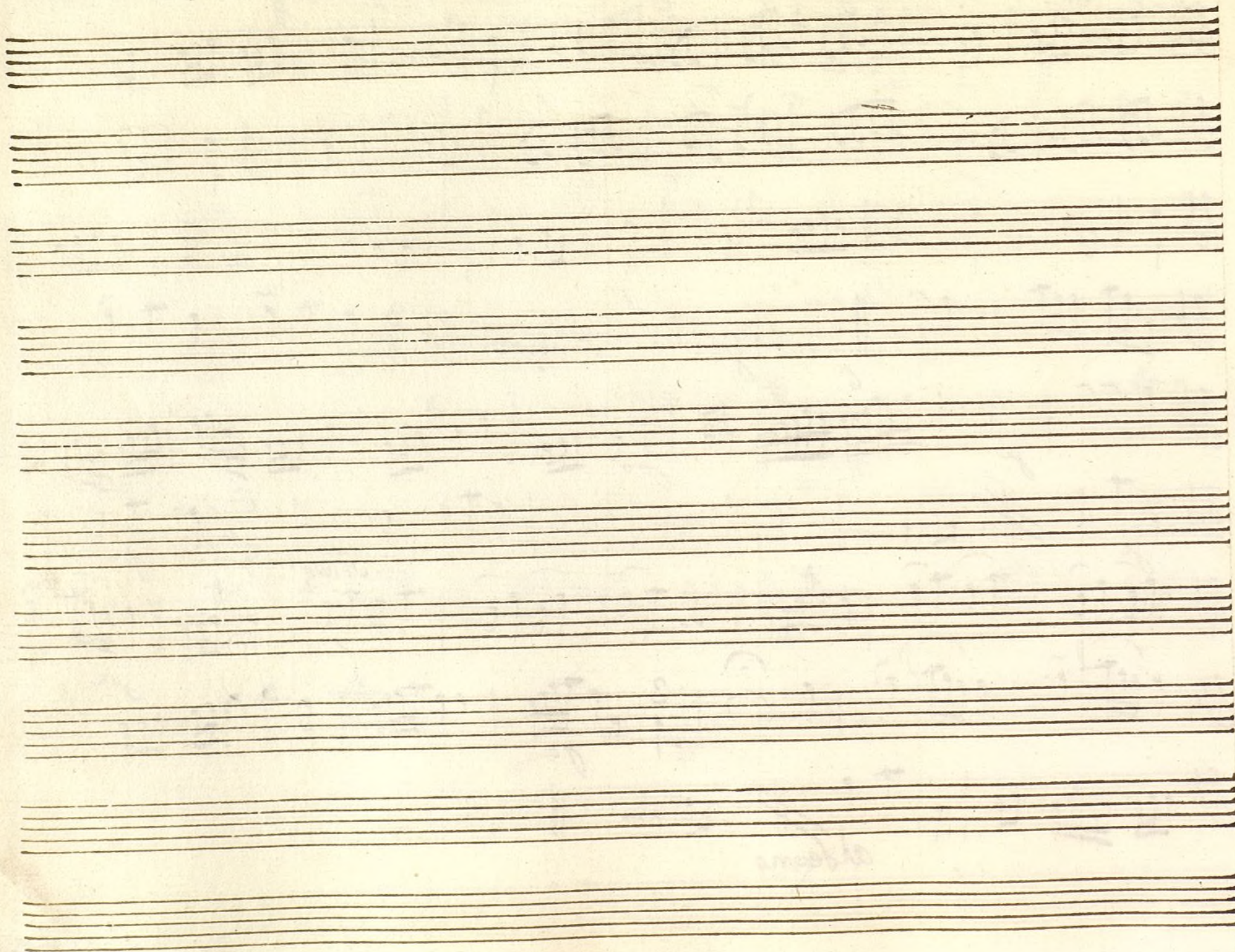
Oboe

Handwritten musical score for Oboe. The score consists of seven staves. The first staff begins with a treble clef, a key signature of one sharp (F#), and a 2/4 time signature. The music is written in a complex, fast style with many beamed sixteenth and thirty-second notes. There are several slurs and dynamic markings, including 'p' (piano) and 'f' (forte). The second staff continues the melody with similar notation. The third staff shows a change in dynamics and includes a 'p' marking. The fourth staff begins with a double bar line and the word 'Allegro' written above the staff. The fifth staff continues the fast-paced melody. The sixth staff includes a 'p' marking and a 'f' marking. The seventh staff ends with a double bar line and a 'p' marking.

Coplas fare

Handwritten musical score for Coplas fare. The score consists of a single staff. It begins with a treble clef, a key signature of one sharp (F#), and a 2/4 time signature. The music is written in a fast, flowing style with many beamed sixteenth and thirty-second notes. There are several slurs and dynamic markings, including 'p' (piano) and 'f' (forte).





trumpeta Primera. tonada + adieu Pastoral. Mus 117-16

Alleg. Ho
alamire

po tenu. *je* *po* *je* *po*

je *po* *je*

po *and.* *je* *po*

je *po* *je*

po *je* *po*

po *and.* *je*

je *po*

allegro.

Volki

No

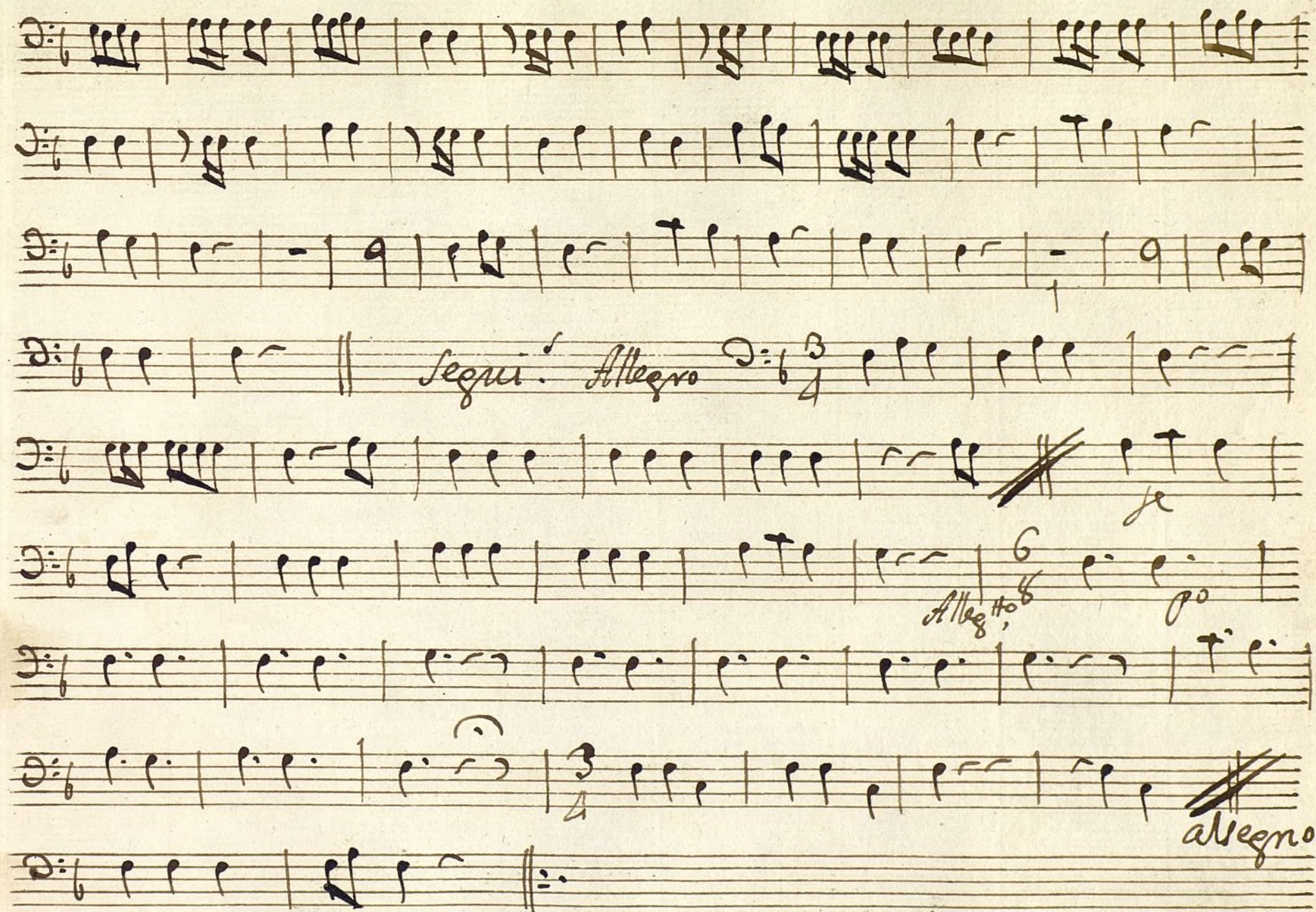
In alamore

And^{te} 2/4

f. a. u. r.
Alleg.^{ro} 6/8

Coplas And^{te} 3/4

Alleg.^{ro} 2/4



al

trompa segunda tonadilla + adieu Pastoral;

Mus 117-16

Alleg.^{ro}
alamire

Handwritten musical score for Trompa Segunda, Tonadilla + Adieu Pastoral. The score consists of nine staves. The first staff begins with a treble clef, a key signature of one sharp (F#), and a 6/8 time signature. The tempo is marked 'Alleg.^{ro}' and the instrument is 'alamire'. The music is written in a single melodic line. The second staff has a 'je' marking. The third staff has a 'po mod.' marking. The fourth staff has a 'je' marking. The fifth staff has a 'po' marking. The sixth staff has a 'po' marking. The seventh staff has a 'po' marking. The eighth staff has a 'B' marking. The ninth staff has a '9' marking and a double bar line. The score ends with a double bar line and a '9' marking.

Volni

No

In alaire

And.^{te} $\frac{2}{4}$ p^o

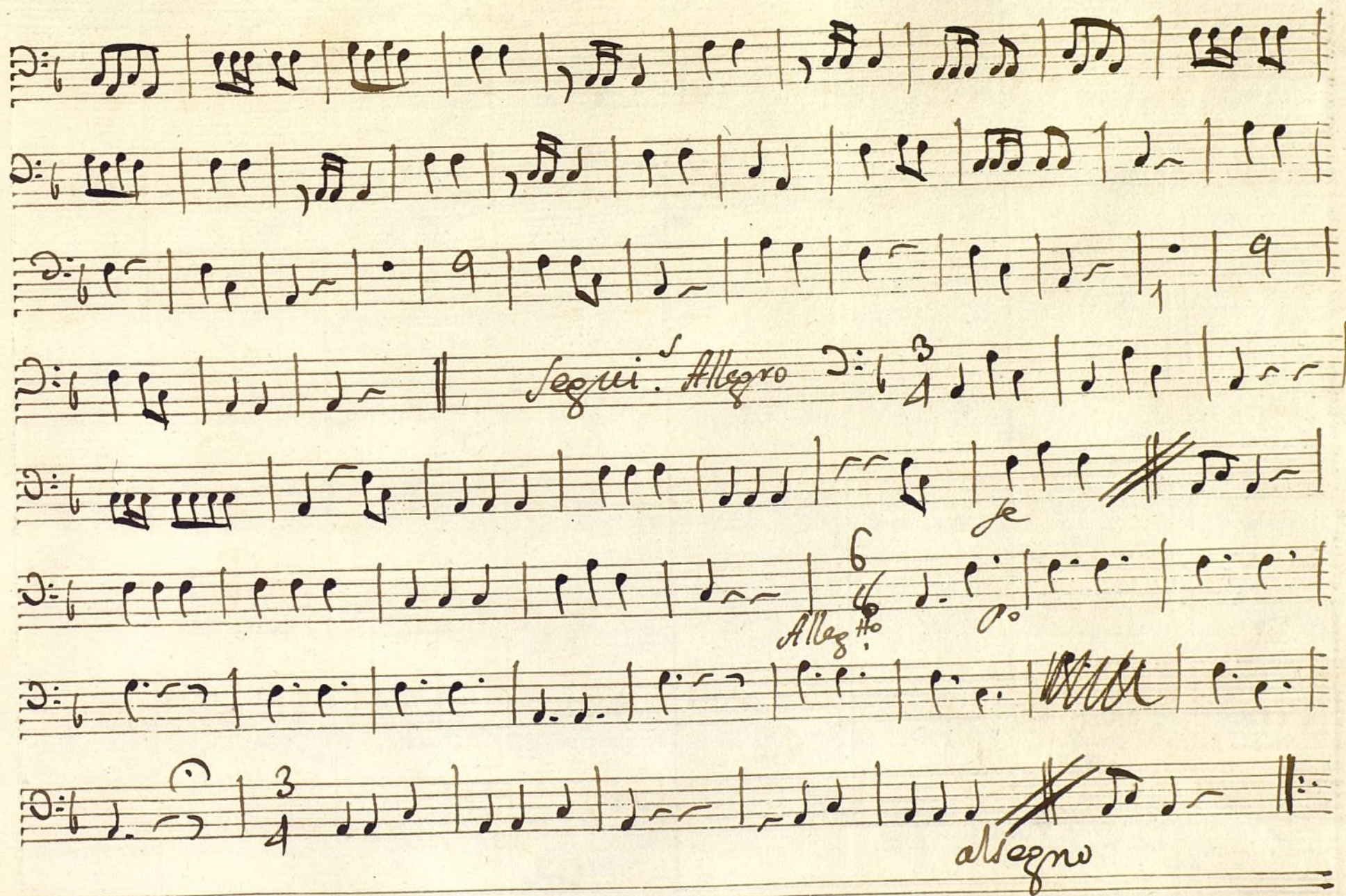
Alleg.^{ro} $\frac{6}{4}$ p^o *Att.*

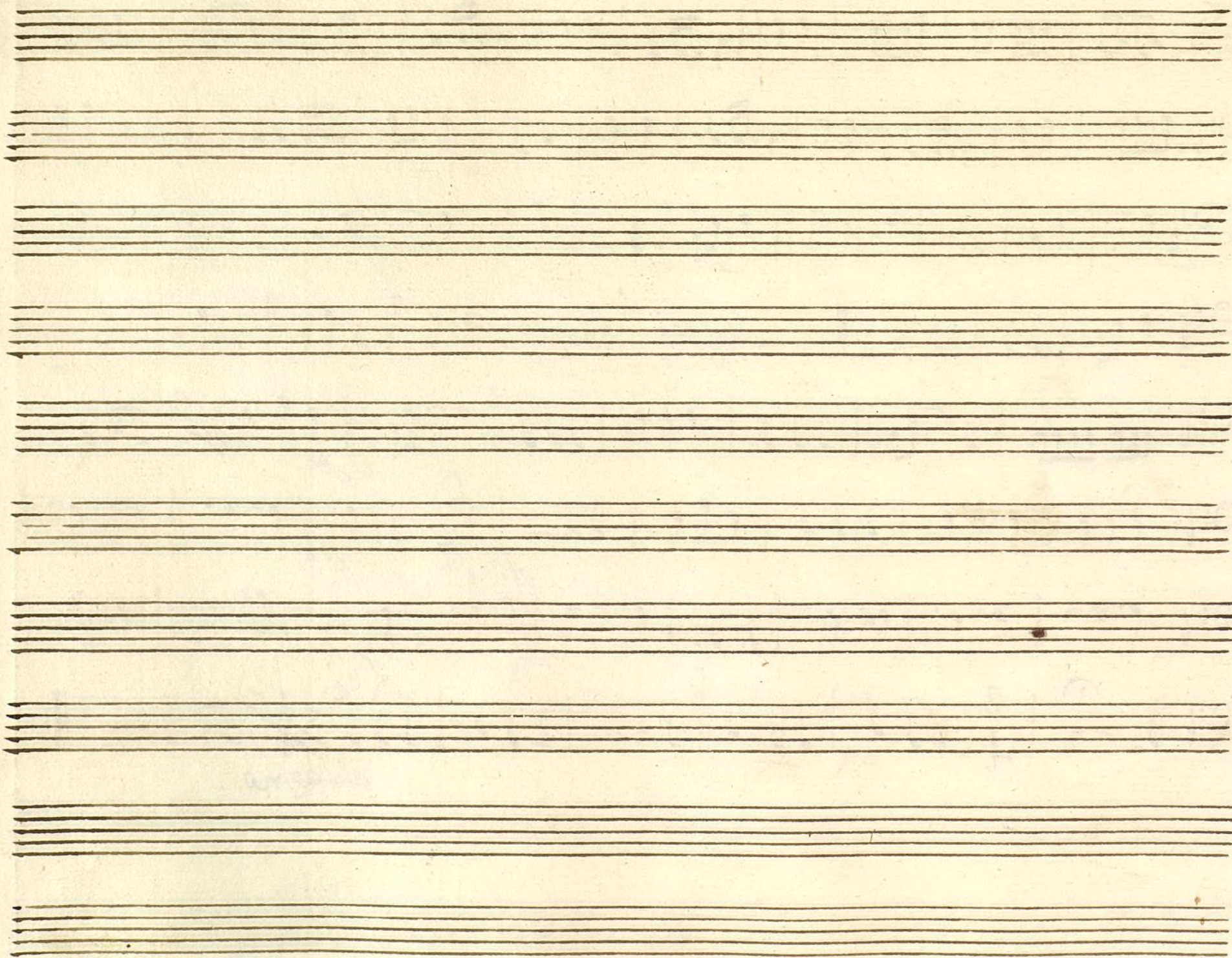
Handwritten musical score for 'In alaire'. The first system consists of four staves of music in 2/4 time, marked 'And.^{te}' and 'p^o'. The second system consists of four staves of music in 6/4 time, marked 'Alleg.^{ro}' and 'p^o', with a '3' under the first measure and an 'Att.' marking at the end. The third system consists of four staves of music in 6/4 time, marked 'p^o' and 'se p^o'.

Coplas barze //

Alleg.^{ro} $\frac{2}{4}$ *voz*

Handwritten musical score for 'Coplas barze'. The first system consists of four staves of music in 2/4 time, marked 'Alleg.^{ro}' and 'voz'. The second system consists of four staves of music in 2/4 time, marked 'voz'.





Ayuntamiento de Madrid

Violon: Tonadilla adus,

+

Nise y fileno

Mus 117-18

Allegretto

A single staff of handwritten musical notation. The notation includes various note values (quarter, eighth, and sixteenth notes), rests, and dynamic markings such as 'p' (piano) and 'f' (forte). The handwriting is fluid and characteristic of 18th or 19th-century musical manuscripts.

A single staff of handwritten musical notation. The notation includes various note values (quarter, eighth, and sixteenth notes), rests, and dynamic markings. The markings 'p' (piano) and 'f' (forte) are visible below the staff. The handwriting is in dark ink on aged, slightly yellowed paper.

Handwritten musical notation on a single staff. The notation includes various note values (quarter, eighth, and sixteenth notes), rests, and a double bar line with a repeat sign. The handwriting is in brown ink on aged paper.

Handwritten musical score for the song "The Rose Tree". The score is written on two staves. The top staff contains the melody, and the bottom staff contains the accompaniment. The music is in 2/4 time, indicated by the "C" time signature. The melody begins with a treble clef and a key signature of one flat (B-flat). The accompaniment begins with a bass clef and a key signature of one flat. The melody is written in a simple, folk-like style, with notes and rests. The accompaniment is written in a simple, folk-like style, with notes and rests. The score is written in ink on aged paper.

Handwritten musical notation on two staves. The top staff contains a melody with various notes and rests. The bottom staff contains a bass line with notes and rests. The notation is in a historical style, possibly 18th or 19th century.

Handwritten musical score for "L'Alceste" by Gluck. The score is on two staves. The first staff has a treble clef and a key signature of one sharp (F#). It contains several measures of music, including a measure with a fermata and the word "Andr." written below it. The second staff has a bass clef and a key signature of one sharp. It contains several measures of music, including a measure with a fermata and the word "Allegro" written below it. The manuscript is written in brown ink on aged paper.

po te po fe volti

volh.

20 *Allegretto poco* $\text{C} \sharp \text{F} \sharp \frac{2}{4}$ *vo* *po* *fe* *po* *allegro*

Alleg. $\text{C} \sharp \text{F} \sharp \frac{6}{8}$ *po* *fe* *Allegro*

Coplas And. $\text{C} \sharp \text{F} \sharp \frac{3}{4}$ *po* *fe* *po* *allegro 2v.* *Breve* *mas*

Handwritten musical score for "Requiem" by Franz Schubert. The score is written on ten staves, with the first five staves for the vocal parts and the last five for the piano. The tempo is marked "Allegro" and the time signature is 3/4. The key signature is one flat (B-flat). The score includes various musical notations such as notes, rests, and dynamic markings like "p" and "f".

