

(Falta violini primeros)

Mus 35-5

35-5.  
Musica de la Loa;

de Empezar temporada;

Noble concurso

Del S.<sup>r</sup> Esteve;

1787.

1200026609



Una Contradanza: 1<sup>a</sup> 2<sup>a</sup>,  
y luego la Sinfonia

Despacio

Correa

Si ay

Versos

Le po

1<sup>or</sup> 3.

2<sup>a</sup>... No le concurro

1<sup>a</sup> Si ay en la Corte

2<sup>a</sup> que corte sano Con vos hoy mano sa ge...

1<sup>a</sup> piedad alguna que de fortuna se pa



2<sup>a</sup> premiar a la bes premiar

1<sup>a</sup> triunfar se pa triunfar

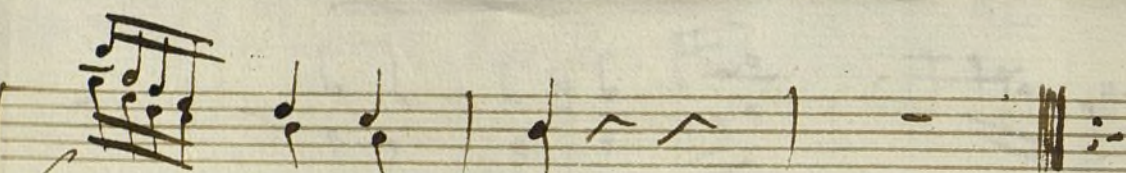
2<sup>a</sup> Uní del celo Con la Inno cencia que su-  
gues tra-

1<sup>a</sup> mire pro picia bes Pere grinos. que  
gues

del si' nos hacen Vapor a  
men cia llega a implorar

sus del si' nos hacen va gar  
tra cle men cia llega a implorar





ha zen vapor

haren vapor

Se Vespere  
Con otra letra

Coro final

Allegro

todas

quea

nuestras fatigas aun mas que de mayan las di fi cul

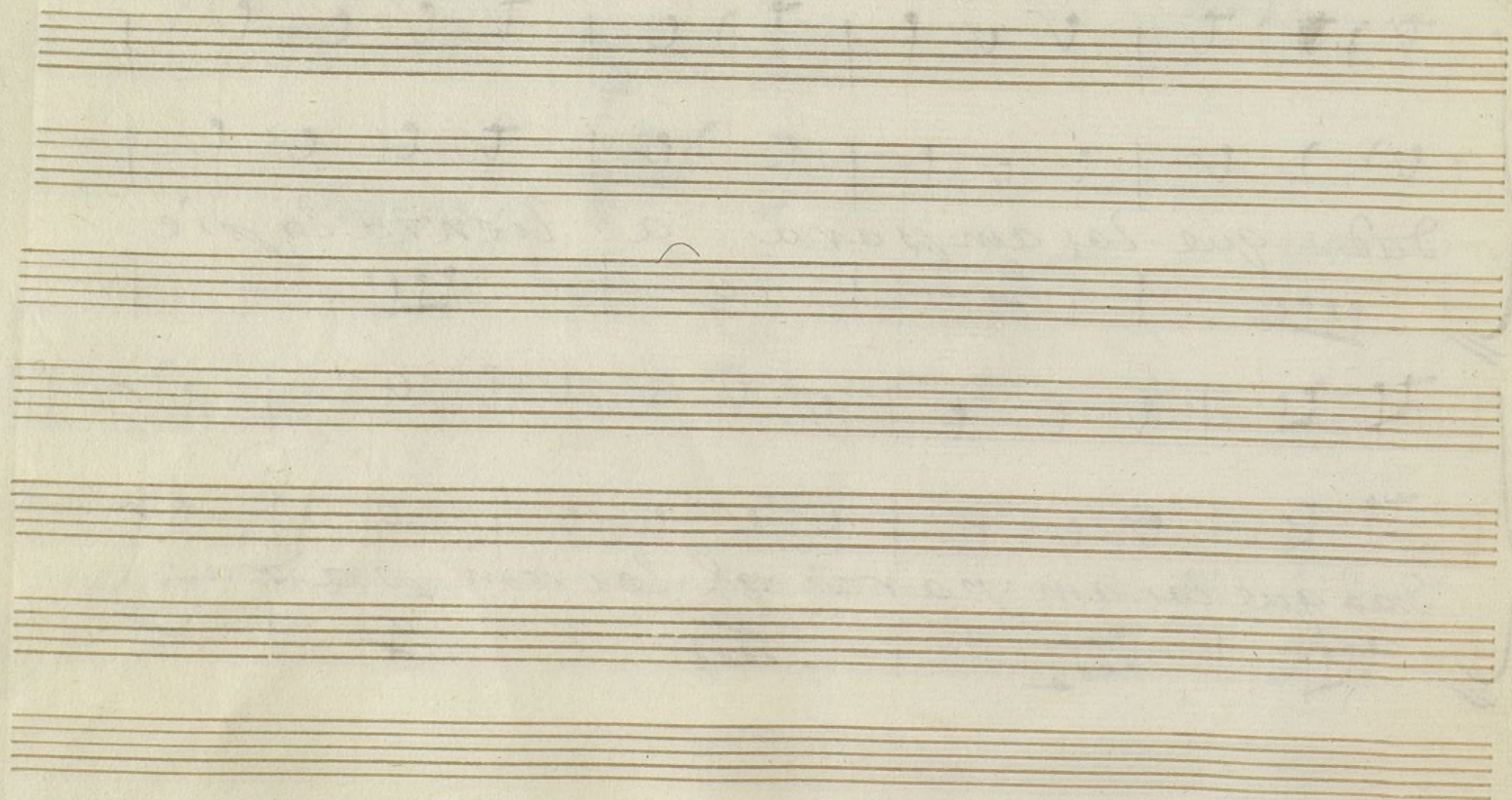


tades la A l'ienta la pie

dad que la am para a l'ienta la pie

dad que la am para q' la am para



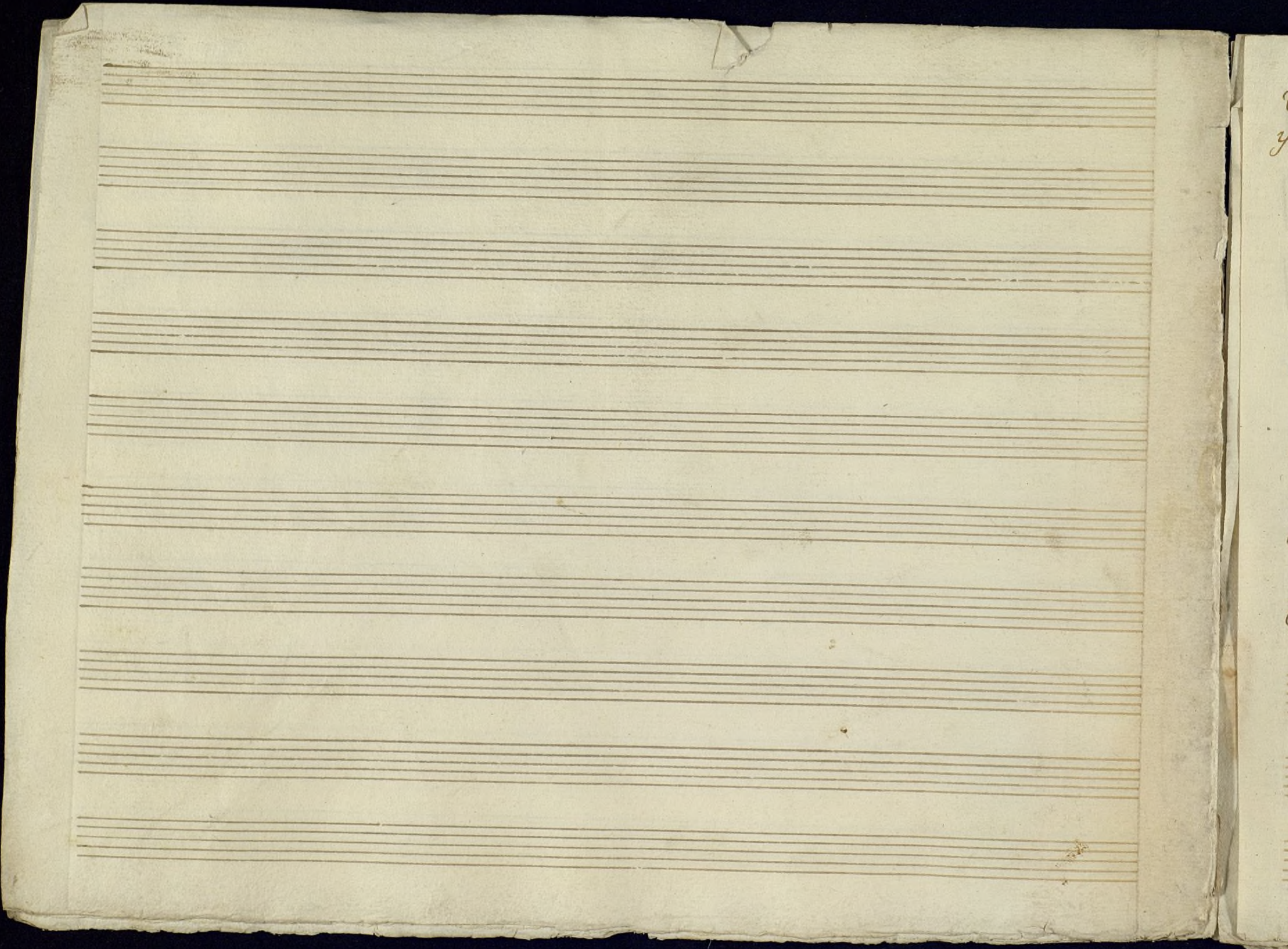




Mus 35-5

4







Violin Segundo.

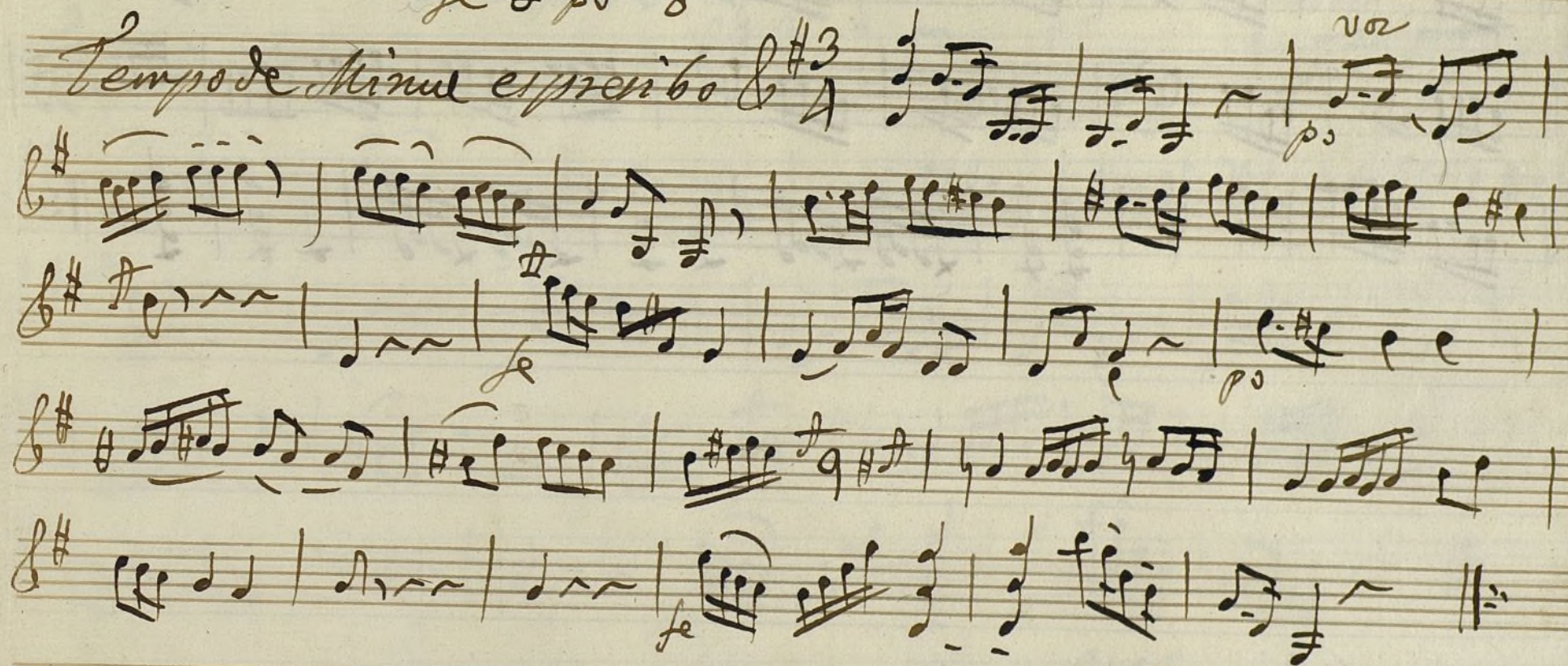
Una Contradanza;  
y luego la simfonia;

Loa

Mos 35-5

Despacio  $\frac{3}{4}$  <sup>voz</sup>  $\text{se } \text{p}^o$   $\text{g} \sim$  || Versos

Tempo de Minueto espreito  $\frac{3}{4}$  <sup>voz</sup>  $\text{se } \text{p}^o$




Se Repite

Volta



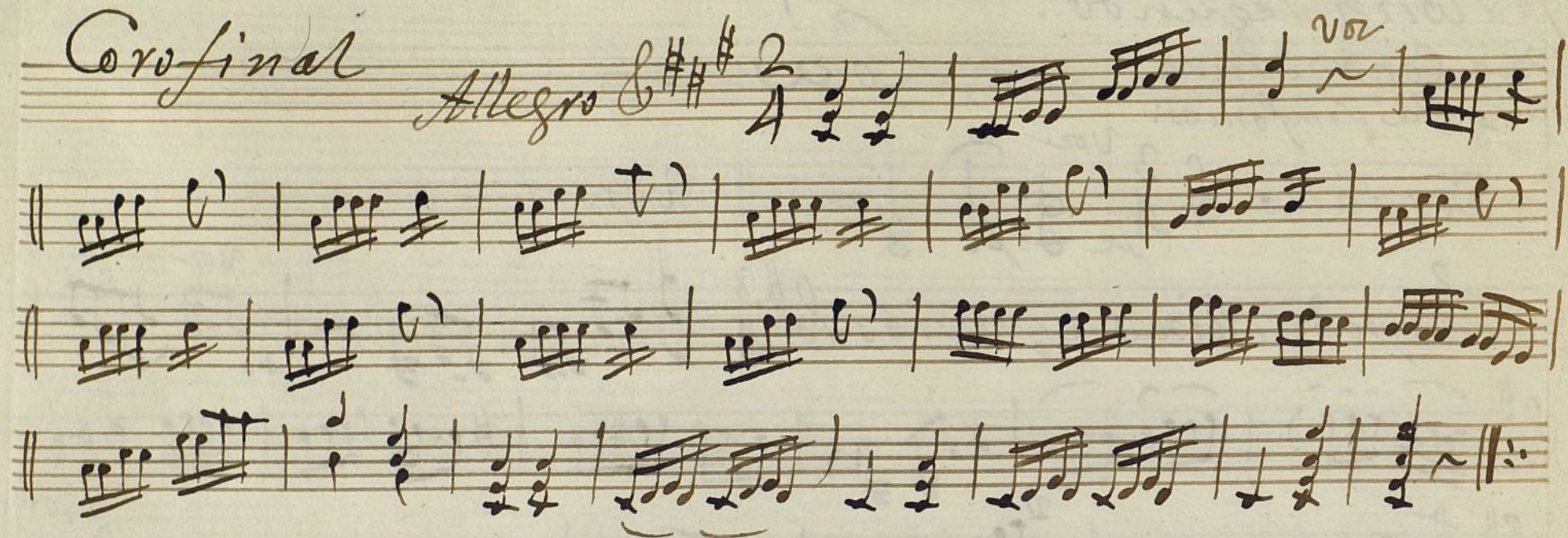
Corofinal

*Allegro*



# 2  
4

vor





Violin Segundo  
Una Contradanza  
y luego la Sinfonia

Loa =

Ms 35-5

Despacio & 3 vor  
4 1 d. | d ~ || versos

*Tempo de Minue Espressivo*

Handwritten musical notation on a single staff. The notation includes a treble clef, a key signature of one sharp (F#), and a 3/4 time signature. The melody consists of several measures with various note values, including eighth and sixteenth notes, and rests. The handwriting is in brown ink on aged paper.

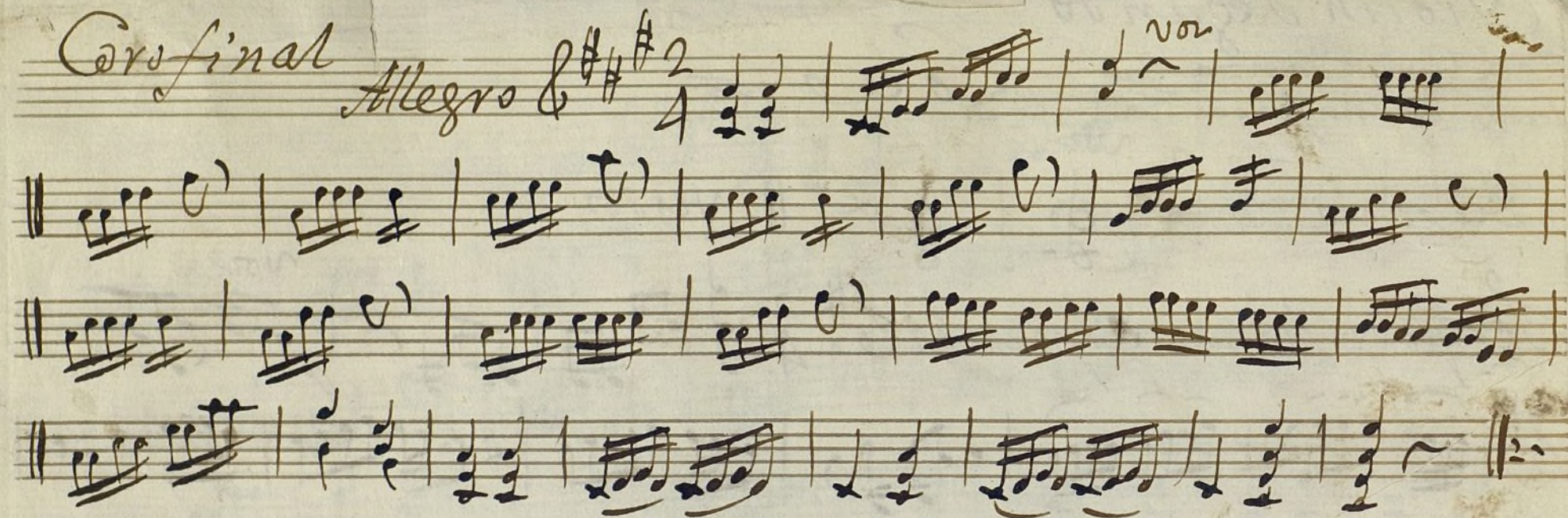
A single staff of handwritten musical notation. The notation includes a treble clef, a key signature of one sharp (F#), and a common time signature (C). The music consists of several measures with various note values, including eighth and sixteenth notes, and rests. There are also some accidentals and a sharp sign that might indicate a change in key or a specific note. The handwriting is in a cursive style typical of 18th or 19th-century manuscripts.

Handwritten musical notation on a single staff. The notation begins with a treble clef and a key signature of one sharp (F#). The music consists of several measures, including notes, rests, and a complex, dense passage of notes. The handwriting is cursive and appears to be from a historical manuscript.

Levespiter

Volh.







Oboe Primero.

Mus 35-5

Una Contradanza; *Loa*  
y luego la Simfonia;

*Deppacio Taze //*

Flauta

Minue

Handwritten musical notation for Flauta Minue. The notation is in G major (one sharp) and 3/4 time. It consists of four staves of music. The first staff begins with a treble clef, a key signature of one sharp (F#), and a 3/4 time signature. The music features various note values, including eighth and sixteenth notes, and rests. The second staff continues the melody. The third staff includes a measure with a '2' below it, indicating a second ending. The fourth staff concludes with a double bar line and repeat dots. The word 'Se Repite' is written to the right of the fourth staff.

Coro

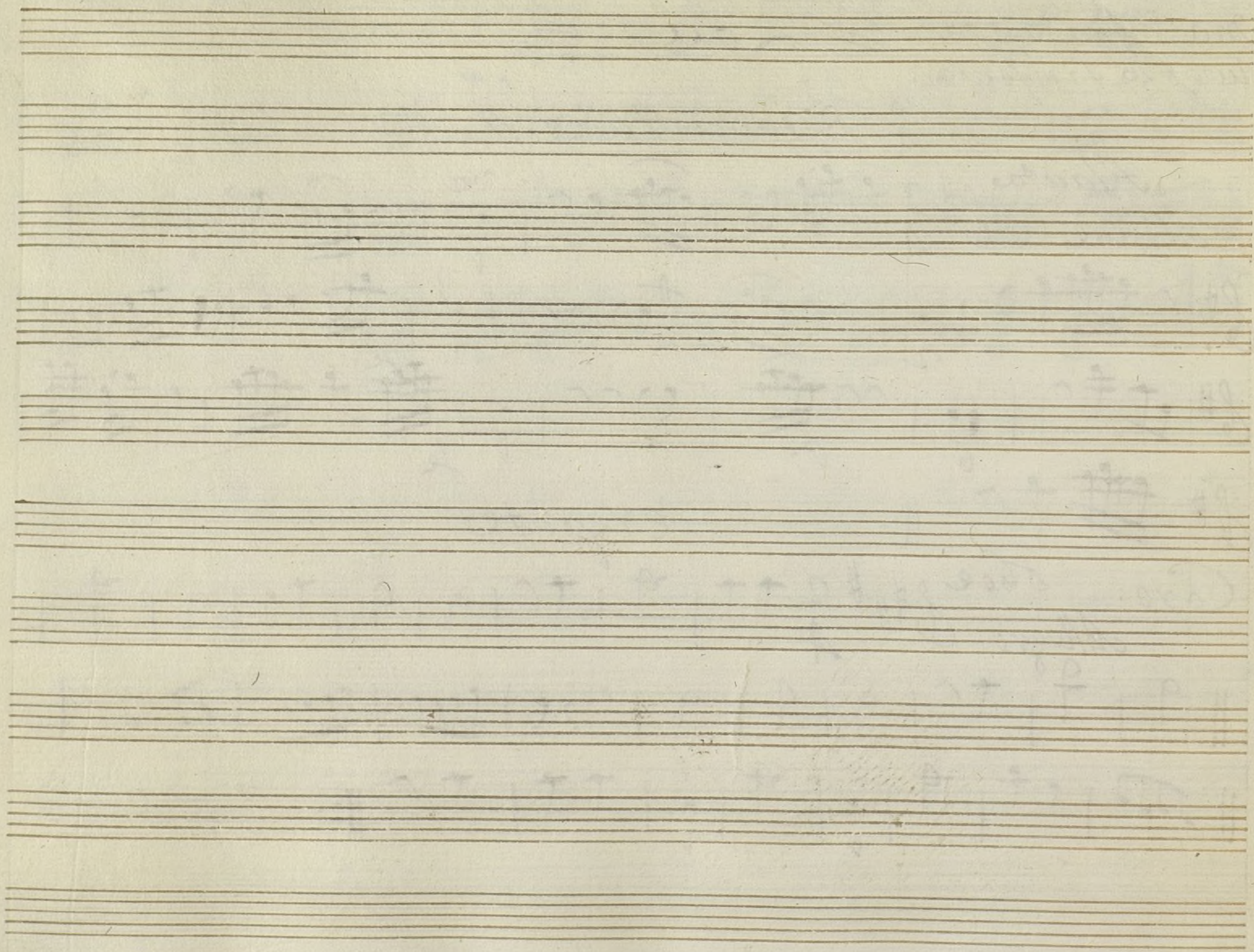
Oboe

Allegro

Handwritten musical notation for Coro Oboe. The notation is in G major (two sharps) and 2/4 time. It consists of two staves of music. The first staff begins with a treble clef, a key signature of two sharps (F# and C#), and a 2/4 time signature. The music features various note values, including eighth and sixteenth notes, and rests. The second staff continues the melody and concludes with a double bar line and repeat dots.

Handwritten musical notation for Coro Oboe. The notation is in G major (two sharps) and 2/4 time. It consists of two staves of music. The first staff begins with a treble clef, a key signature of two sharps (F# and C#), and a 2/4 time signature. The music features various note values, including eighth and sixteenth notes, and rests. The second staff continues the melody and concludes with a double bar line and repeat dots.







oboe segundo.

Una Contradanza;  
y luego la Simfonia;

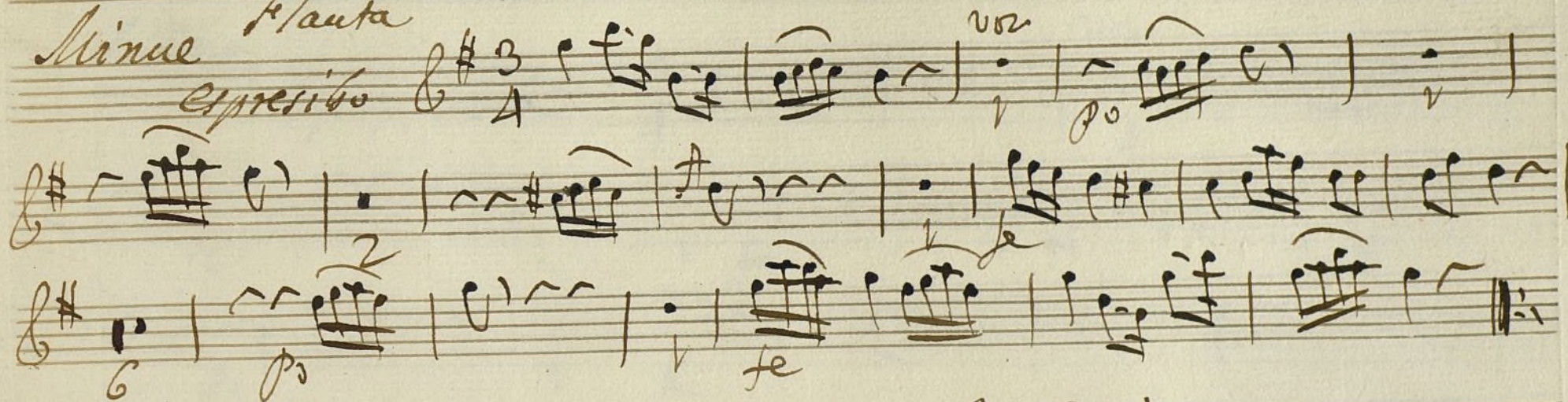
Loa

mus 35-5

$\frac{3}{4}$  Despacio Laze

Minue Flauta

espresso

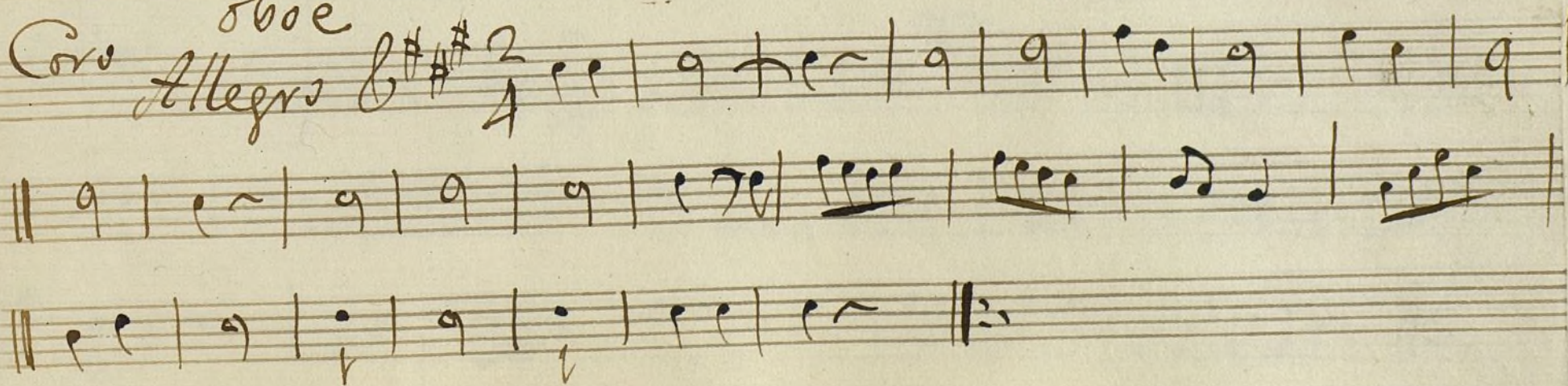


Le Repite

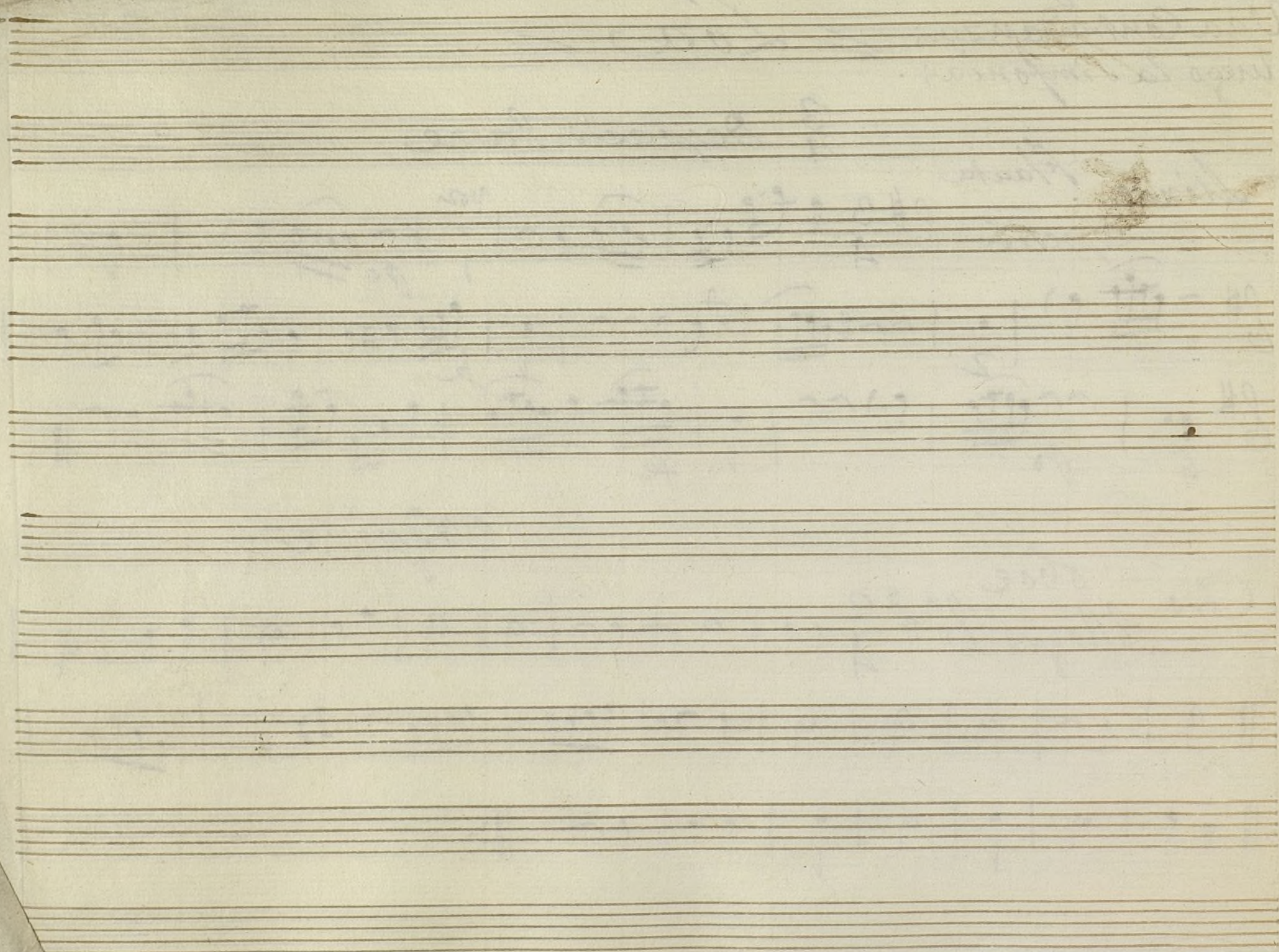
Coro oboe

Allegro

$\frac{2}{4}$









*Trompa Primera* <sup>+</sup>

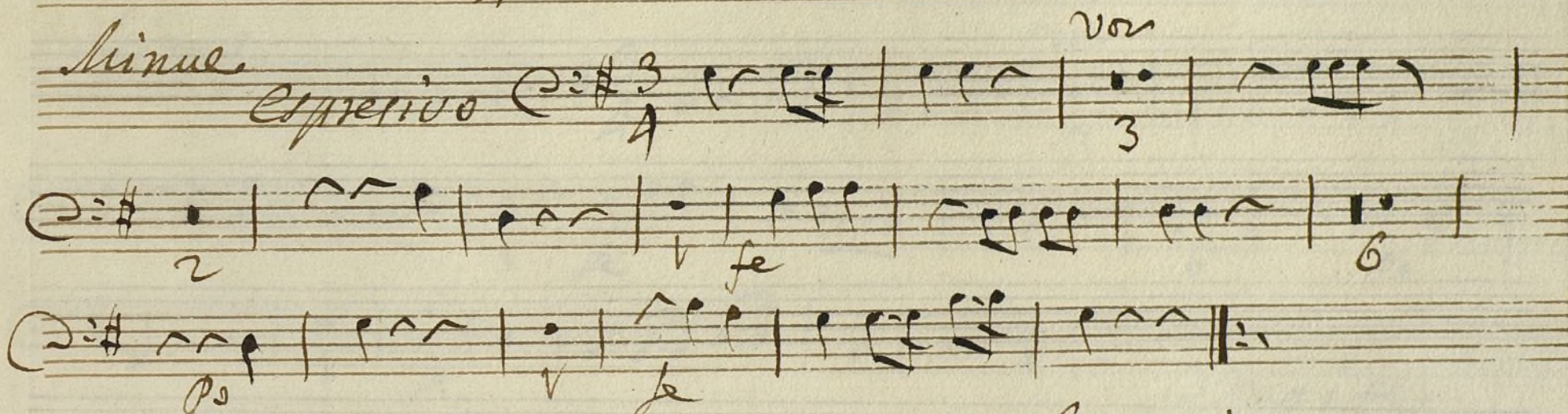
mus 35-5

*Una Contradanza* ~~Loa~~  
*y luego la Simfonia*

$\frac{3}{4}$  *tarze*

*Minue*

*Espressivo*

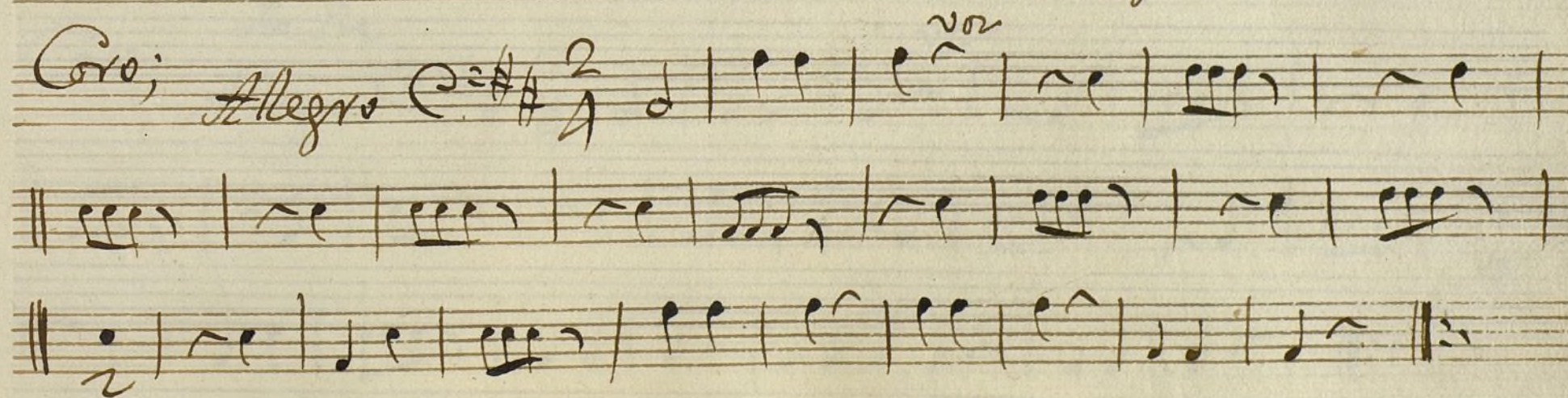


*Seppite*

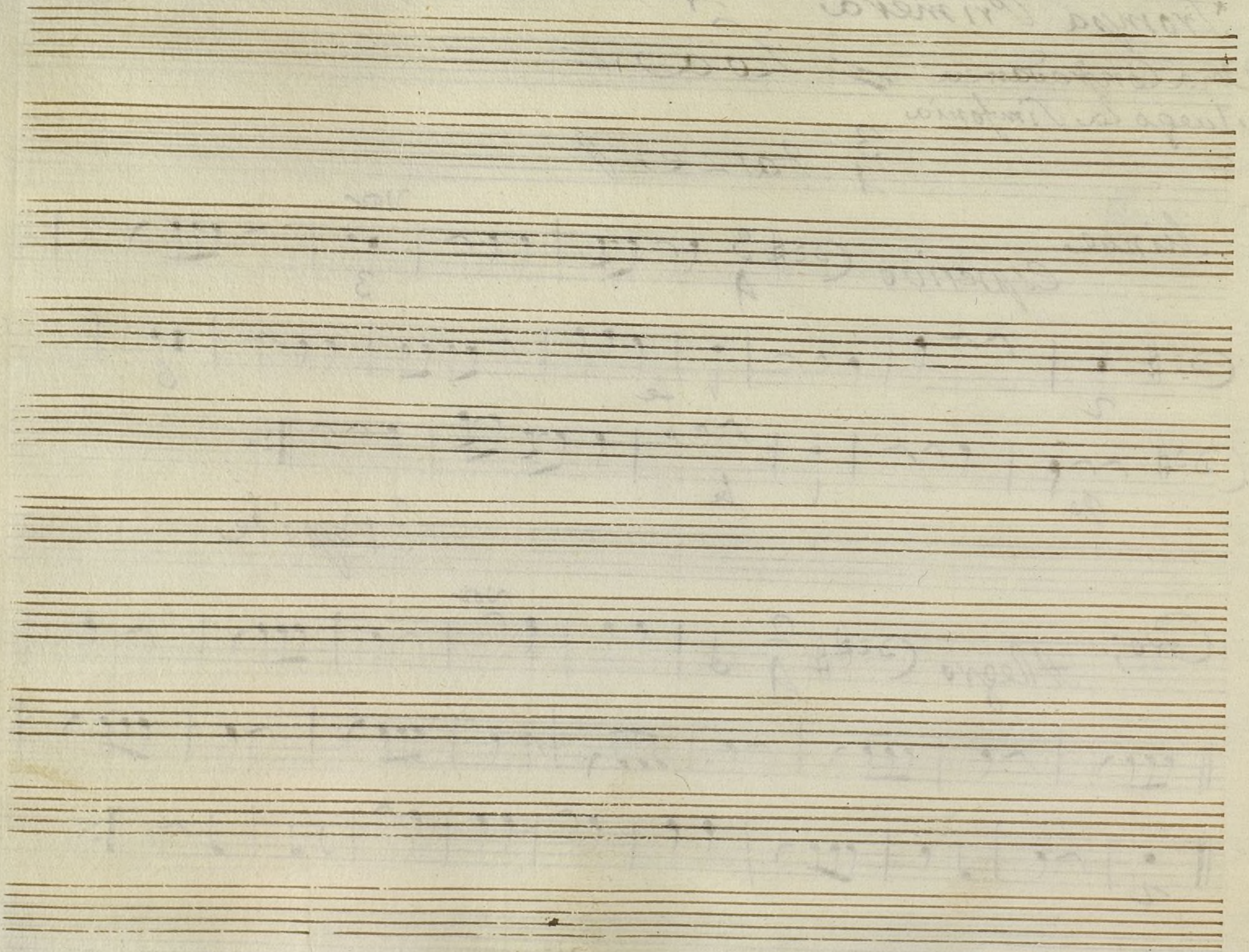
*Coro;*

*Allegro*

$\frac{2}{4}$









*Trompa Segunda*

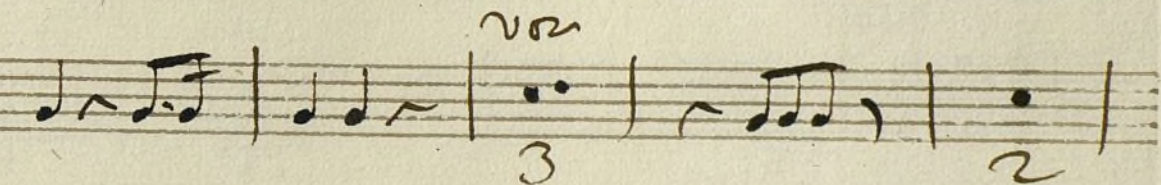
Mus 35-5

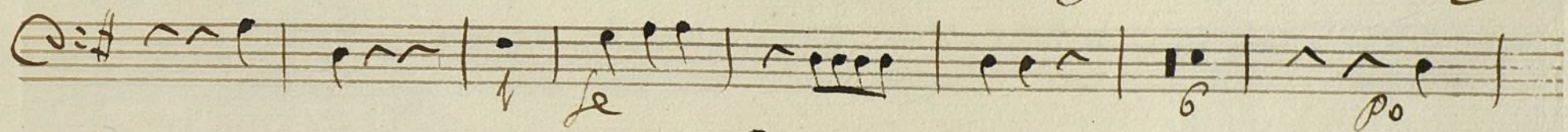
*Una Contradanza: Lo a*

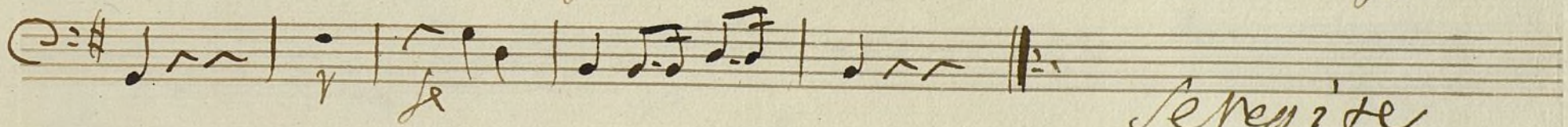
*La Simfonia*

*3/4 Tazze //*

*Minue*

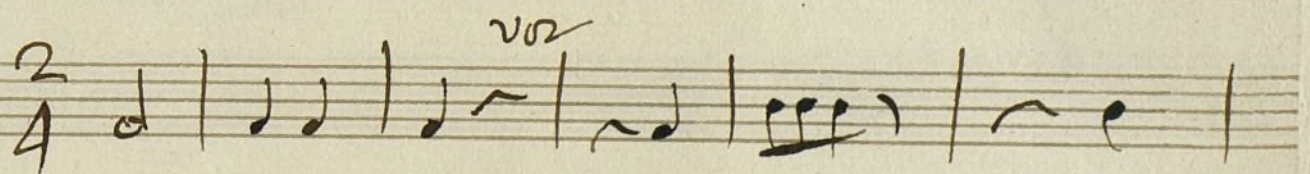
*espreito*  $C=\sharp$   $\frac{3}{4}$  

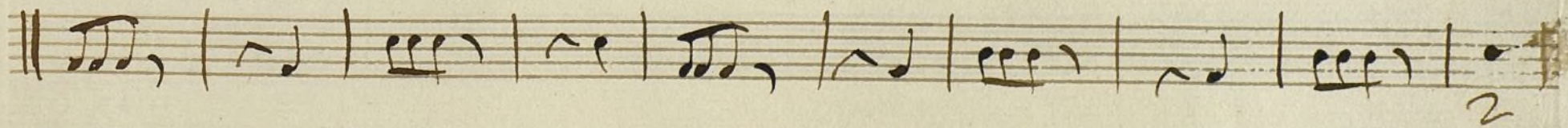
$C=\sharp$  

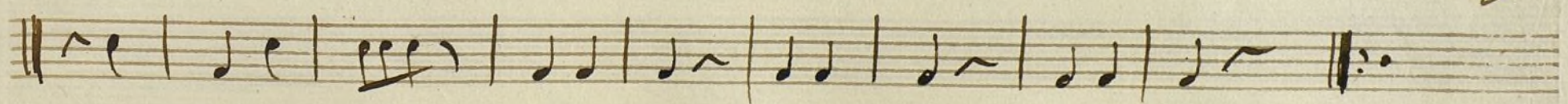
$C=\sharp$  

*Se repite*

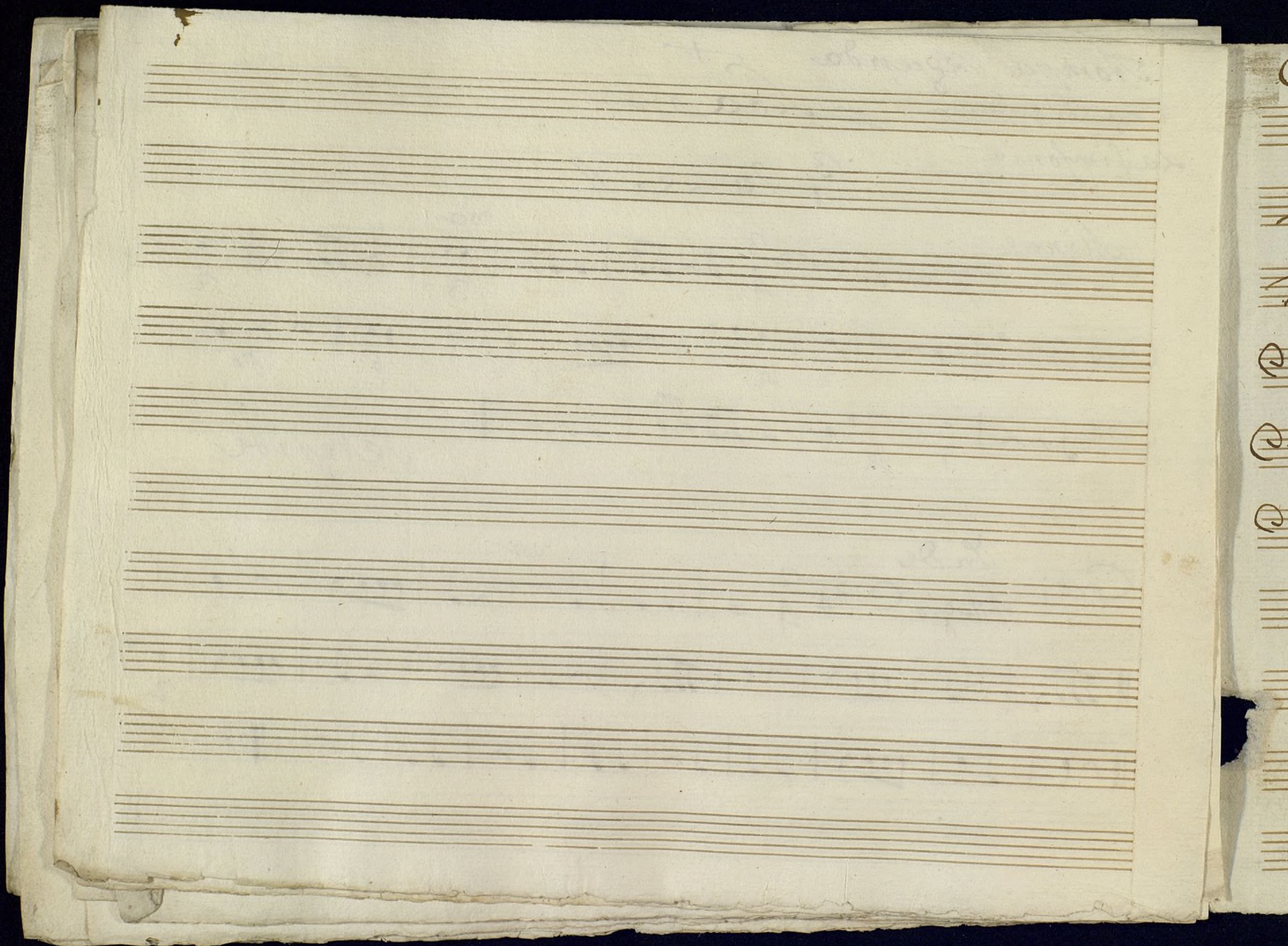
*Coro; In de*  
*Allegro*

$C=\sharp\sharp$   $\frac{2}{4}$  









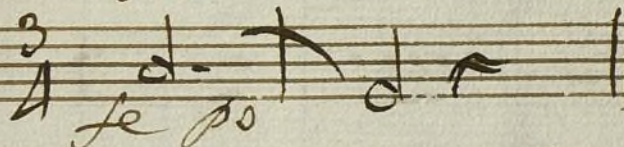


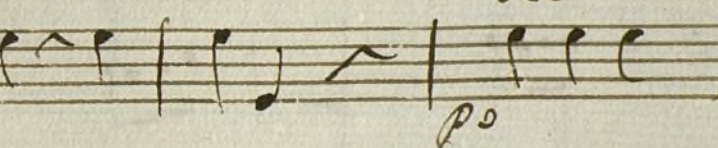
Contrabajo.

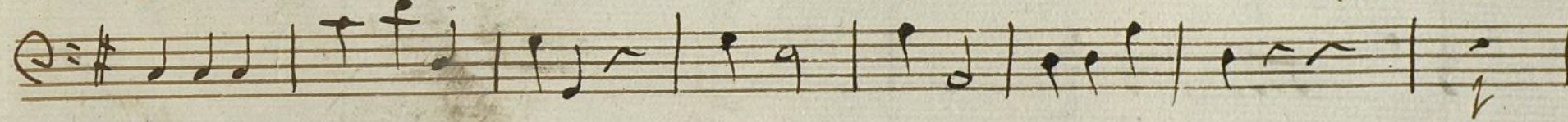
mus 35-5

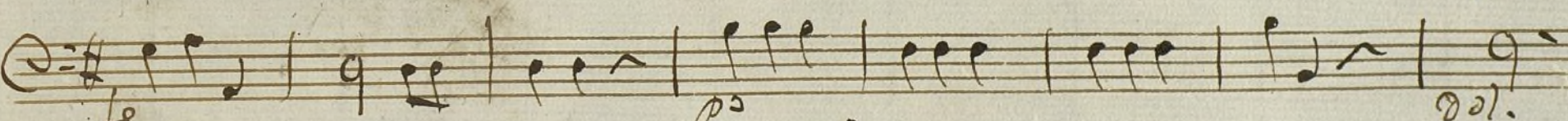
Loa

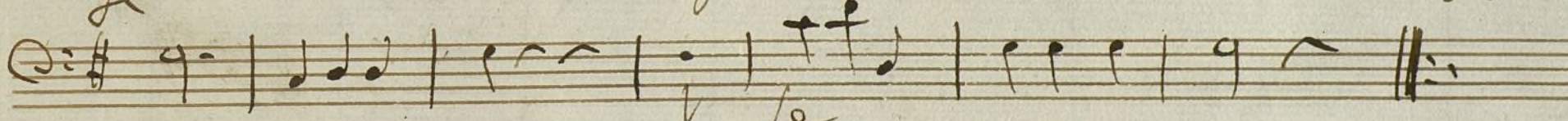
La Contradanza  
y luego la Simfonia

De pado  $C: \frac{3}{4}$  <sup>vor</sup> *le po*  || veros

Tempo de Minue  $C: \frac{3}{4}$  <sup>vor</sup> *po* 

$C: \frac{3}{4}$  

$C: \frac{3}{4}$  *le*  *po* *dol.*

$C: \frac{3}{4}$  *le* 

Se Repite

Volta



Coro final

Allegro

