

Leg. 2º. N.º 12.

Mus 122-7

(Leg. 3º. N.º 28)

t

Tondilla a 3

1778

2ª parte de los Españoles 28

Urañantes para

la Sr. Polonia, forlano y fado

x D.º fernando ferandiere.

Ayuntamiento de Madrid

And.^{te}

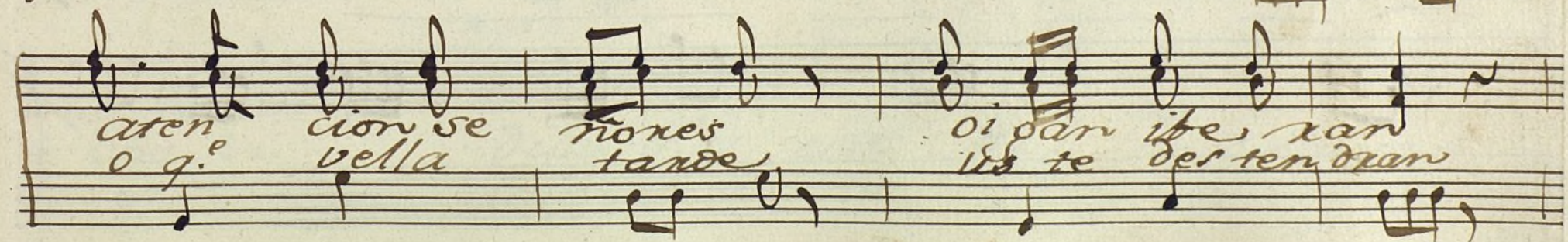
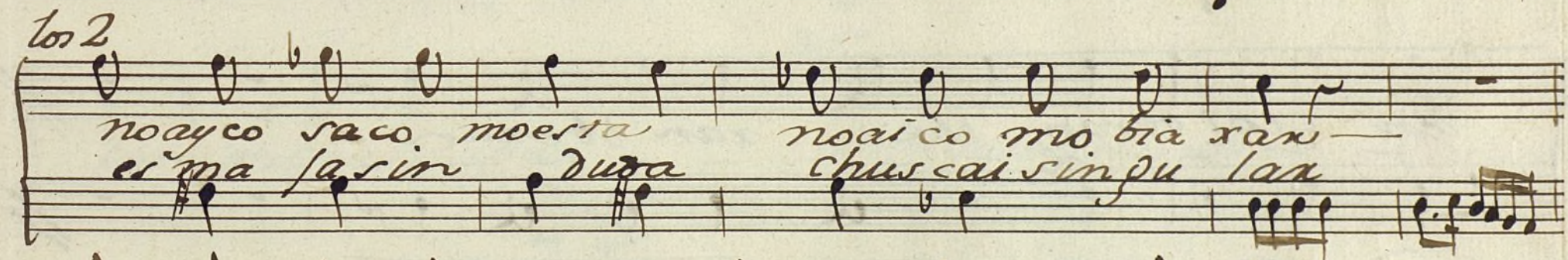
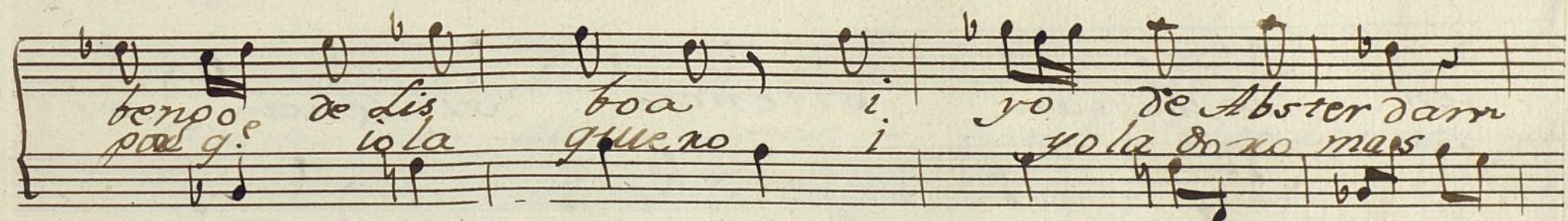
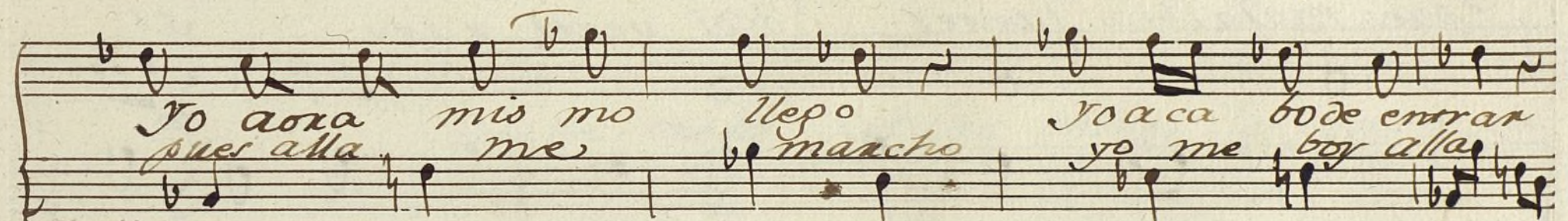
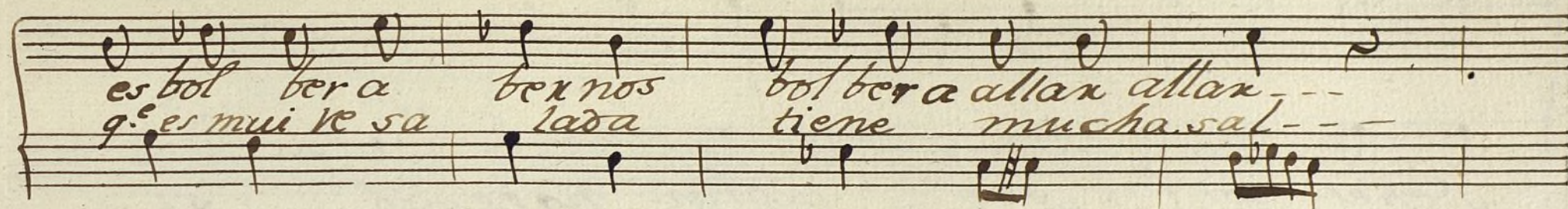
Handwritten musical notation for the first system, featuring a treble clef, a key signature of one sharp (F#), and a 2/4 time signature. The notation includes a series of eighth and sixteenth notes.

Handwritten musical notation for the second system, continuing the melody with various note values and rests.

Handwritten musical notation for the third system, featuring a series of eighth and sixteenth notes.

Handwritten musical notation for the fourth system, including the lyrics: *Ami podn Jose Señox d.ª beltran*

Handwritten musical notation for the fifth system, including the lyrics: *primero qui siera Yo antes de empezar*



Handwritten musical score on aged paper. The score consists of six staves. The first two staves contain the lyrics: "g. Enes to. Jay ses aigran notedad si. / pues mas aibia / antes o di verti ran si". The third staff has the lyrics: "len cio ibe ran silencio si lencio si". The fourth staff has the lyrics: "len cio i beran ibe ran ibe ran". The fifth staff has the lyrics: "len cio i beran ibe ran ibe ran". The sixth staff has the lyrics: "len cio i beran ibe ran ibe ran". The score is written in a cursive hand and includes various musical notations such as notes, rests, and bar lines. There are also some markings like "p.º" and "se" on the staves.

Alleg^{to}

Como en ~~todos~~ das las gentes se admira la

variedad por e solo nuevo tiene ocu

1.^a pado on gran lujo a mas quien se acentrado calla mu

2.^a chacha dipo q^{er} esto no digas mas

Pol.

pues q^u sois bo io io io io soi D.ⁿ

Pol.

Xor/e - - i bo q^u sois soi soi

soi soi D.ⁿ ~~Bel~~ tran note acuerdas q^u de Italia

abra diez años no mas te can te una cava

Parola que

tiña Cavatina dixas Loquet lo mismo tie animal que eu

Pol.^a
saba por alla g.^e epen

didó lame monia itam bien la voluntad de g.^e

suxe tos co mo ellos seme lleuen amia blas

note a guerdas prenda mia de ag.^e los tiempos a —

Paxolaiff.
tras quando can te un ve don del fondo dixas bestiana
todo es uno d.ⁿ beltran

Handwritten musical score on aged paper, featuring six systems of staves. Each system consists of a vocal line (treble clef) and a piano accompaniment line (bass clef). The lyrics are written in a cursive script below the vocal line. The music is in a key with one sharp (F#) and a common time signature (C). The lyrics are in Spanish, with some words appearing to be from a traditional song or poem.

del ce lebre del ce lebre fie xa bras

Pol^a
ba lien te pa de Ani males se mean

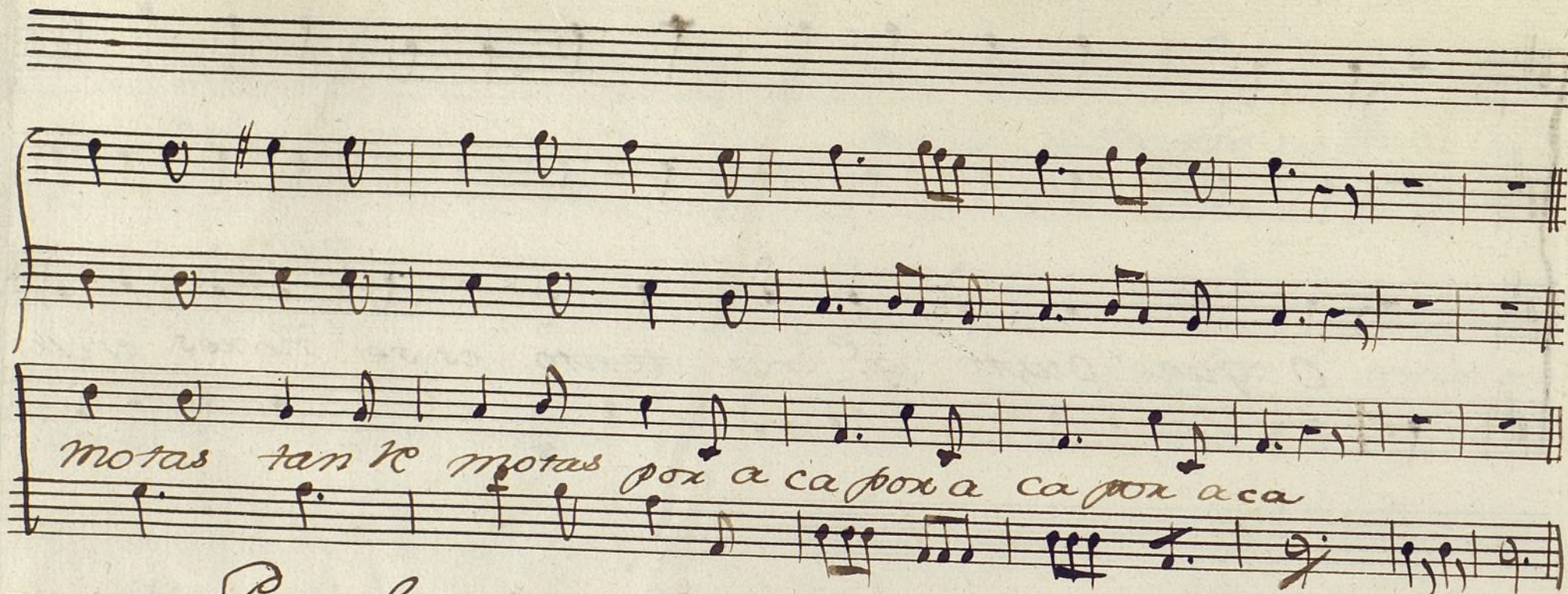
en ca xa do a ca mas pue no tie ne re medio

la tar de emos de pa sar la tar de emos de pa

sa la tar de emos de pa sar

O que gusto q.º con tento es se ñores es cu

chan en los teatros no be. da des tan ve notas tan ve



Parolas.

Baia sr D^o Xorfe q.^o traje es ese? aca nose pastan paravitas
mucho paño en los vestidos botones con abundancia
porq.^o de aquesta maderia en todas partes ai anda.
Ya ora traeis alguna cosa nueva de Olanda?
Si ve no xa sente monoj y ora usted unas seguidillas
en frances que se cantaron en las Exequias de on Poeta
que espixó haciendo el ultimo acto de una tragedia.

Seo.

And.^{te}

Punto alto.

6

vetu ma xosi

nete fer am ple te du Rue des Maxi

se ne sui poentircis me la nui dans

lombre se suivan cor le mem e Pan til fe

som bre le pliv bo ia son pri le pliv le pliv le
 lio be diu bo ia - pri

Sanola.

Eso nobale nada oipa usted una Muñeira q. se canto
 en tetuan en celebridad de el arribo de unas Navas
 cargadas de cebada para el consumo de el Pais.

Pastoral

no sedice

Cancion

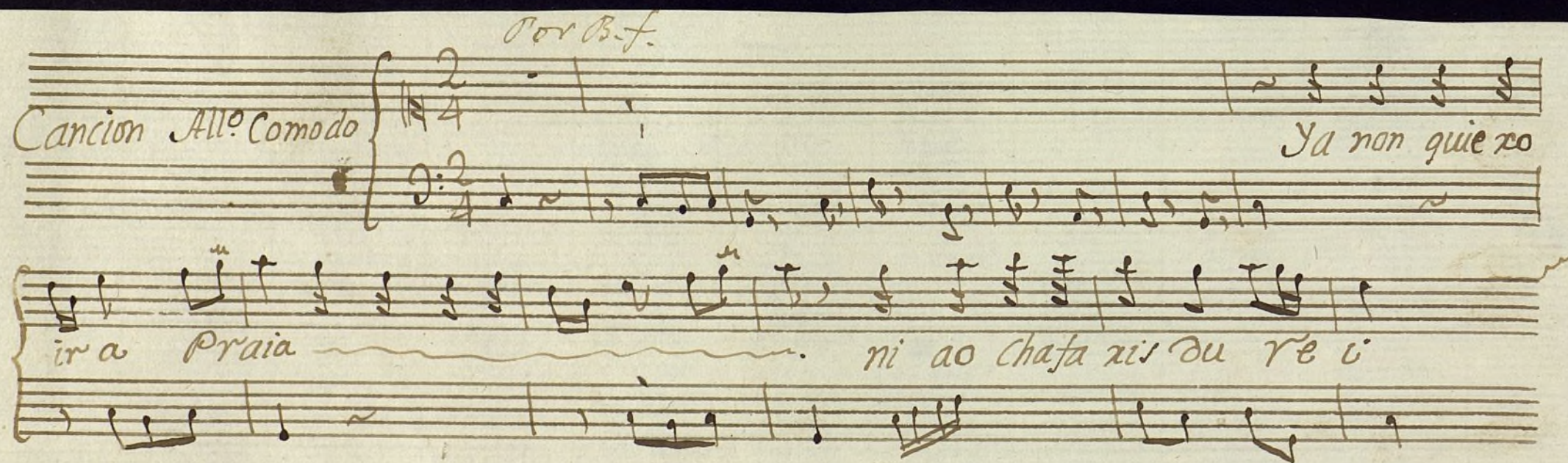
Con 3.^o ob.^o i bajo.

Por B. f.

Cancion All. Comodo

Ya non quie ro

ir a Praia ni ao Chafazis du Re i



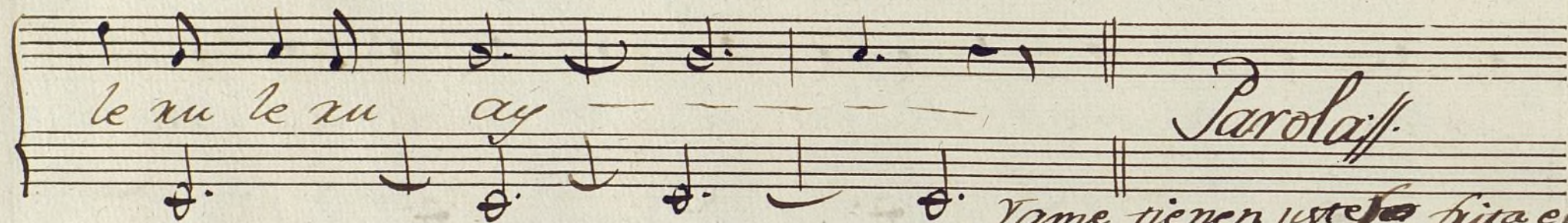
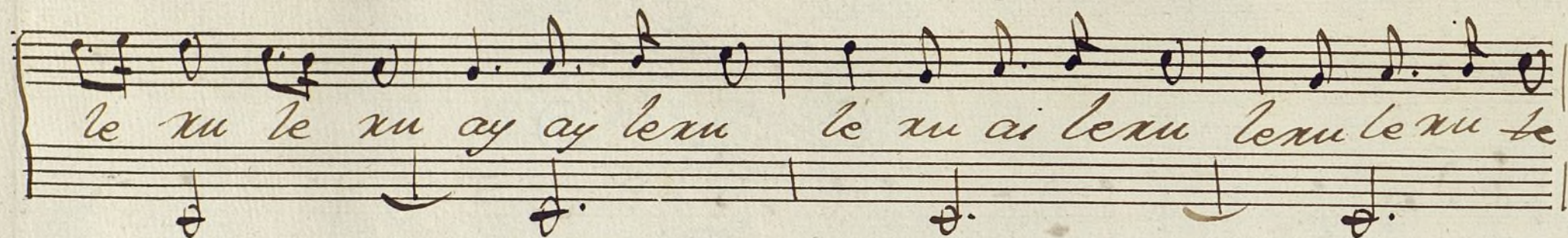
¿esta ala u O me morto no di Sa q'eu lli ma tei ai si ai no
a la fexxu fexxu esta ño ila ton

Dacapo

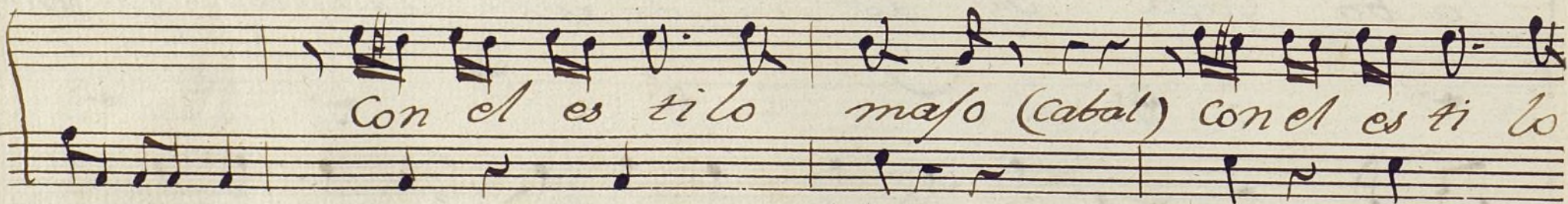
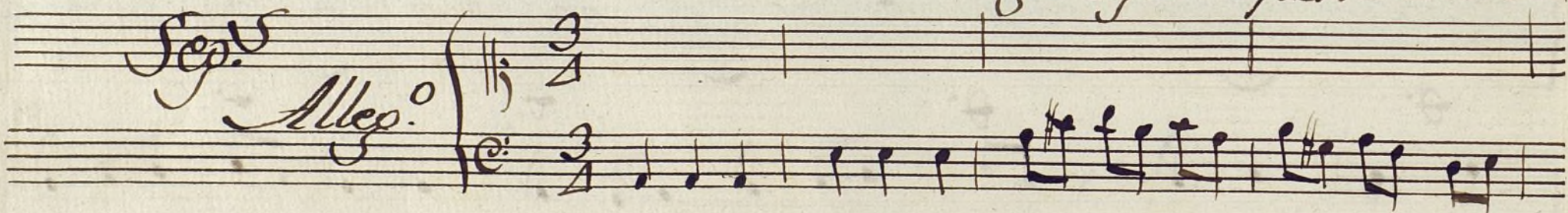


Ayuntamiento de Madrid .

crego foi ao mo iño dei sa di to a la cri
ada ne na sino be ño logo ten con ta con
la ba cada ay le xu le xu ai ai le xu
le xu a i aile xu le ai le xu le ai le xu



Name tienen ~~este~~ fita el uno
con su ~~re~~ dondel el otro con
su ~~ma~~ ñeixa, para q^e ~~re~~ bien ten
digo oigan aquesta Maxera



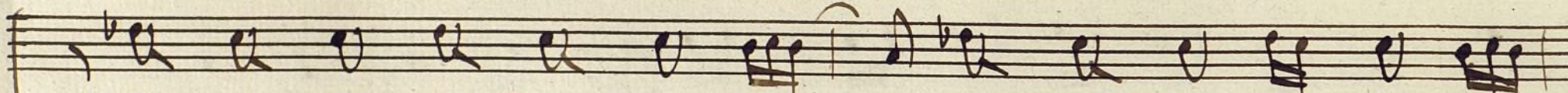
mafo con el esti lo mafo nenpu no alter

ne nenpu no alterne por q.º de supra


ceso por q.º de supra ceso todos todos ca

recen oi gauru te q.º tal tengo

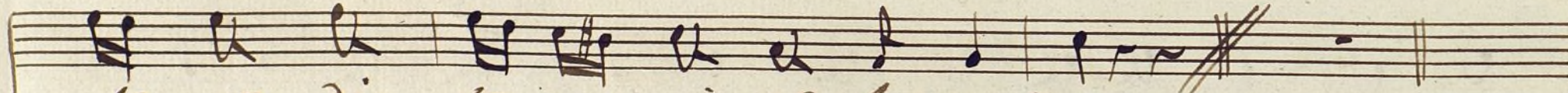
muchasal mi re vs te se non di cers te que no



 pues no se meda nada — ni avste — tampoco —



 — siga vste su dic ta men — (e pues) v, siga v



 te su dic ta men io a kelopropio

All. assai


 viva

viva viva nuestra España porq. ca

viva viva nuestra España porq. a

bunna endi ben tian nada

nada falta todo sobra es be

lli si ma na cion es ve lli si ma na cion

All.^{to}

yaxa

Yao xase kō nes yaxa ma da mas

per don pe dimos coriwag ansias

Sol. a

patio que rido Luneta? gradas solo me faltan

todo

buenas pal madas

para que a cordes en boces

se

Handwritten musical score for a song, featuring ten staves with notes and lyrics in Spanish. The lyrics are: "barias los tres ori dos a — buenas plantas nos despi da mos en con so nan cia". The notation includes various musical symbols such as notes, rests, and bar lines, with some staves showing multiple lines of music.

barias los tres ori dos a — buenas plantas

nos despi da mos en con so nan cia

nos despi damos en con so nan cia

nos despi damos en con so nan cia

Handwritten musical score on aged paper, featuring three systems of staves. The first system includes lyrics in Spanish. The second system contains instrumental notation. The third system includes more lyrics.

consegui di llas de golpe consegui di llas de

gol pe i va ras i va ras —

Sop. *Al.* *3* *4* *3* *4*

Que confu sion de voces g.^e con fu sion de voces g.^e
Que confu sion de voces g.^e
Que confu
a quies cu cha mos
sion de voces a quies cu cha mos

a quieran chamos sin duda q' es estu en

do sin de nuestro aplauso

Allegro

p.^o

Chi to chi to mas que di to lo ne for se -

ra obseñ ban por q.^e a be ces mucho xui do es se

que confu sion de

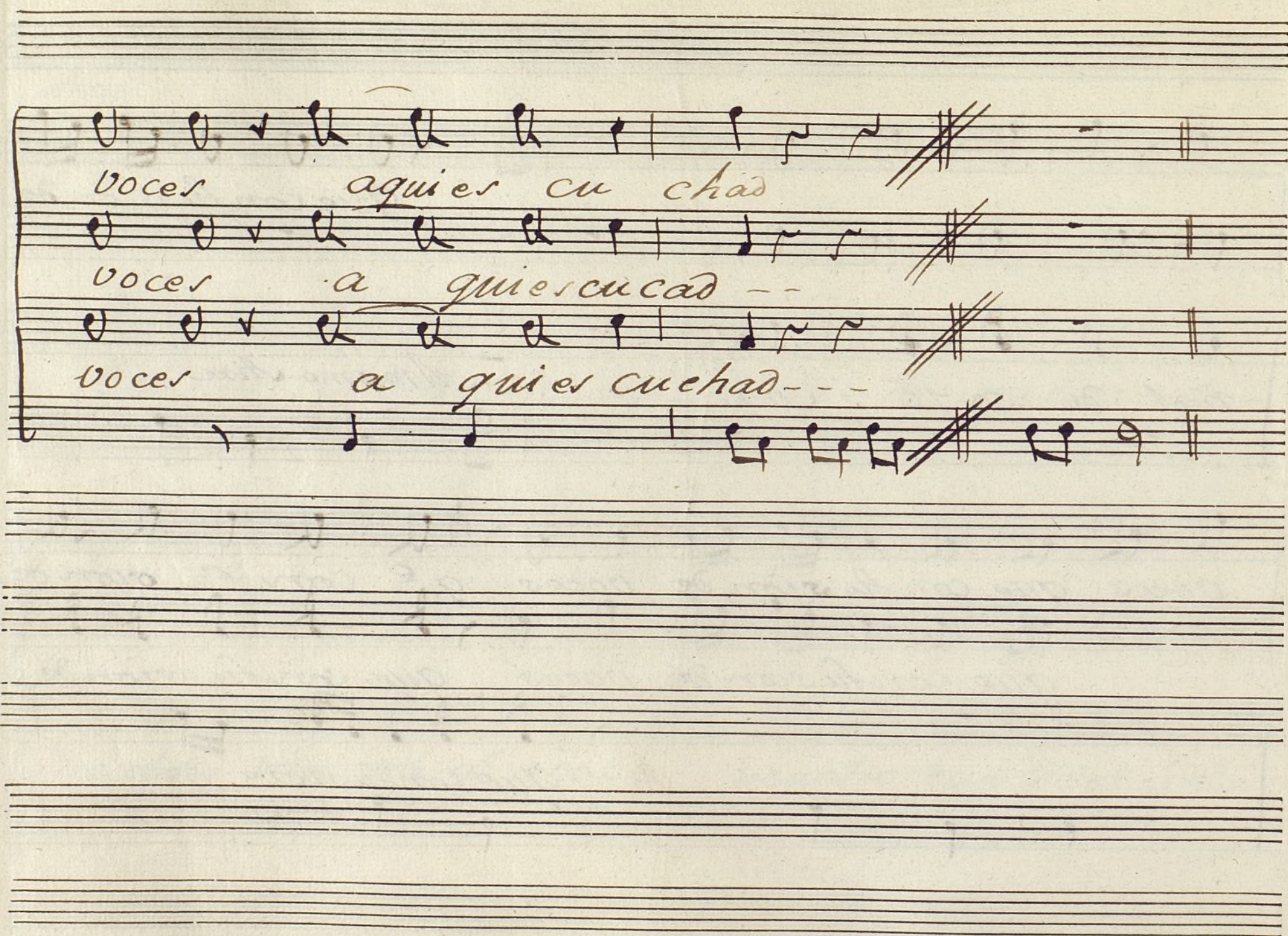
ñal de so fo can — — — Al mismo Aire

voces que confu sion de voces q. e confu sion de

que confu sion de voces que confu sion de

que confu sion de

Handwritten musical score on four staves. The lyrics are written below the notes in a cursive script. The first staff contains the lyrics "Voces aquí es cu chad". The second staff contains "Voces a quier cucad --". The third staff contains "Voces a quier cucad ---". The fourth staff contains a single note followed by a series of eighth notes. The score is written on aged, yellowed paper with multiple empty staves below the first four.



Voces aquí es cu chad

Voces a quier cucad --

Voces a quier cucad ---

Ayuntamiento de Madrid



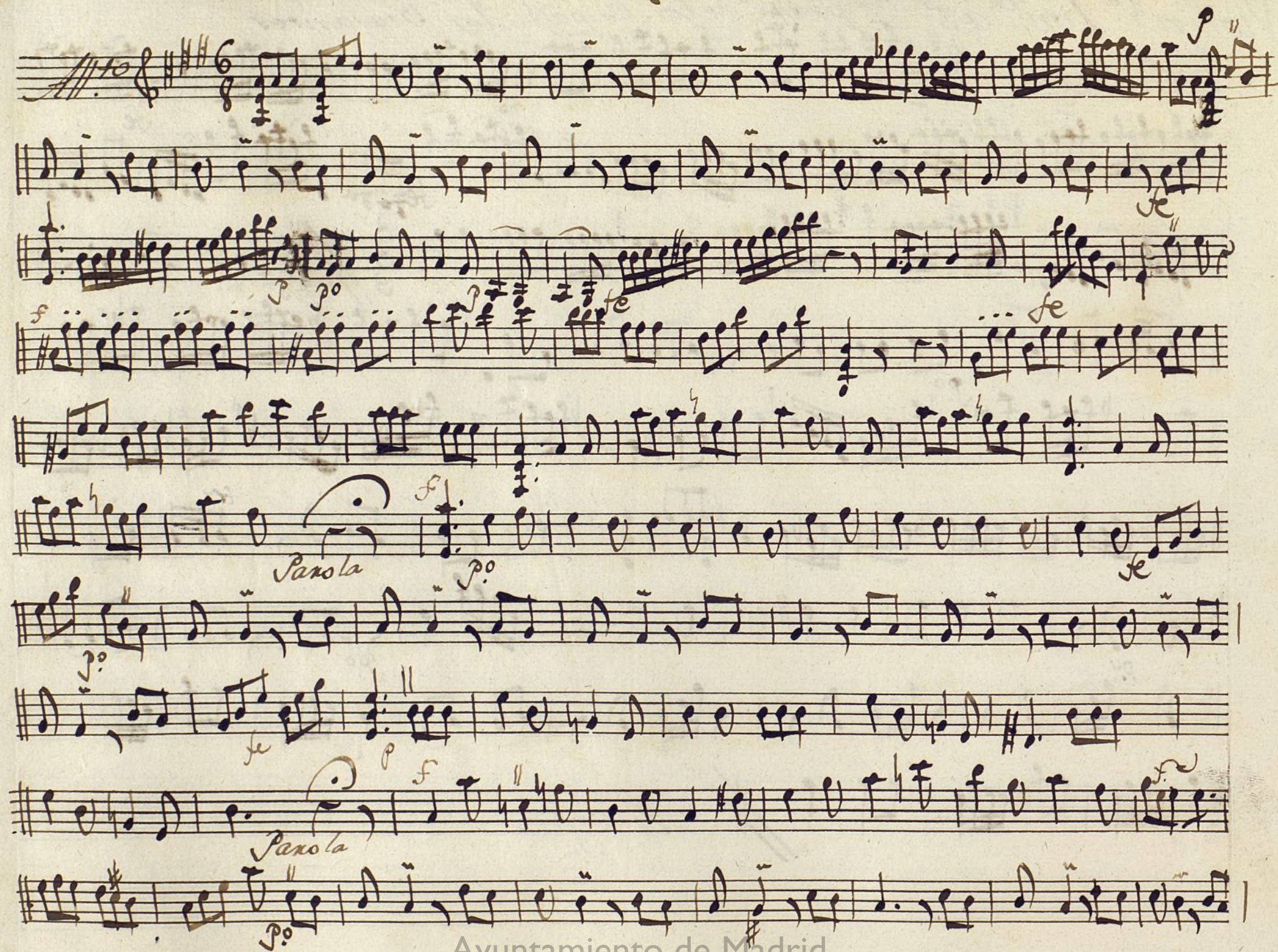
Ayuntamiento de Madrid

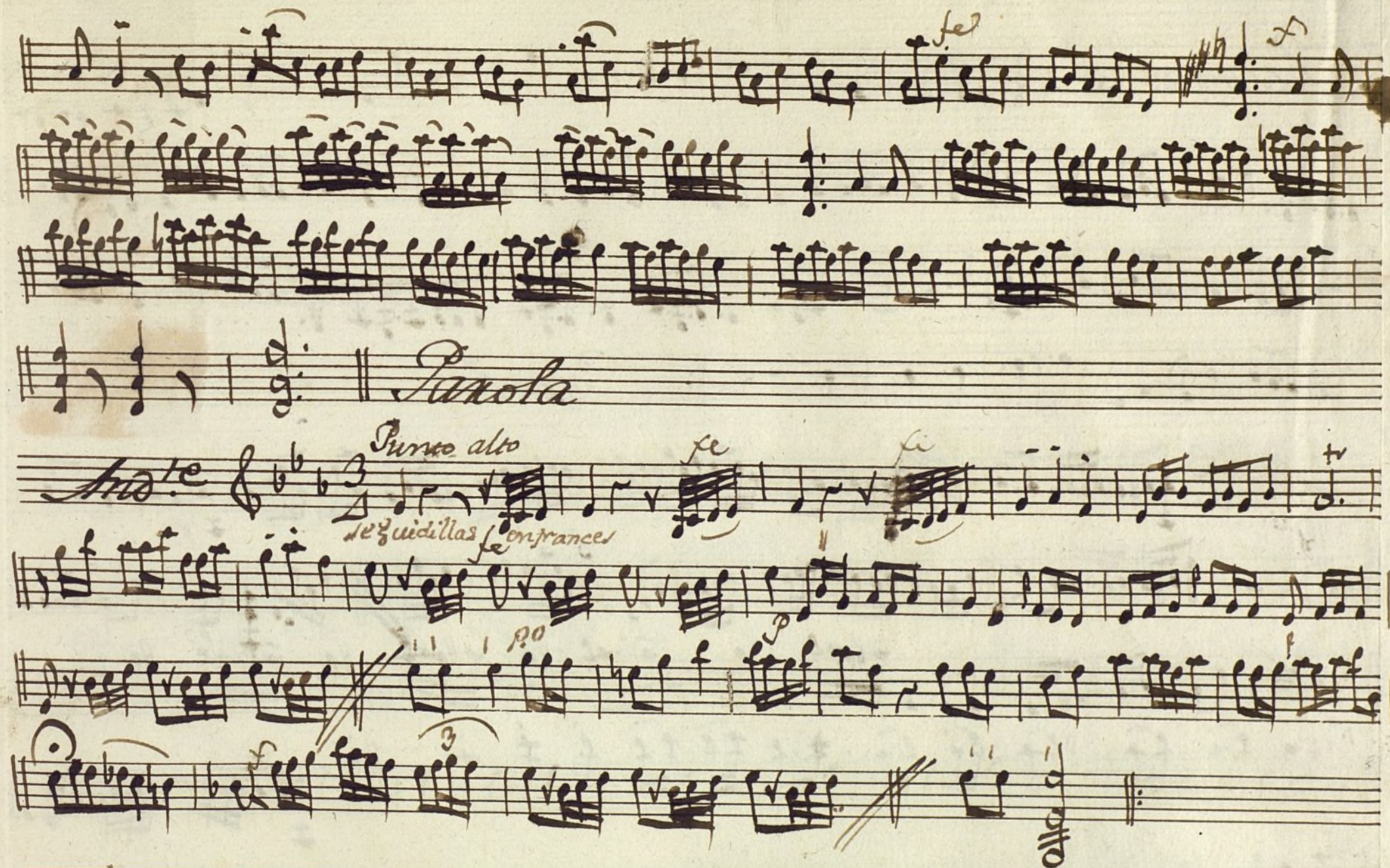
Violin 1.º Ton.ª a 3. 2.ª parte delos españoles Viajantes

Mus 122-7

And. assai

Allegro





Parola -

Cancion $\frac{2}{4}$

All.^o Comodo

f *p* *f* *u* *p* *po*

f *p* *f* *u* *p* *po*

Da capo. sin parox

Parola

seguir $\frac{3}{4}$ *p*

f *p* *f* *u* *p* *po*

f *p* *f* *u* *p* *po*

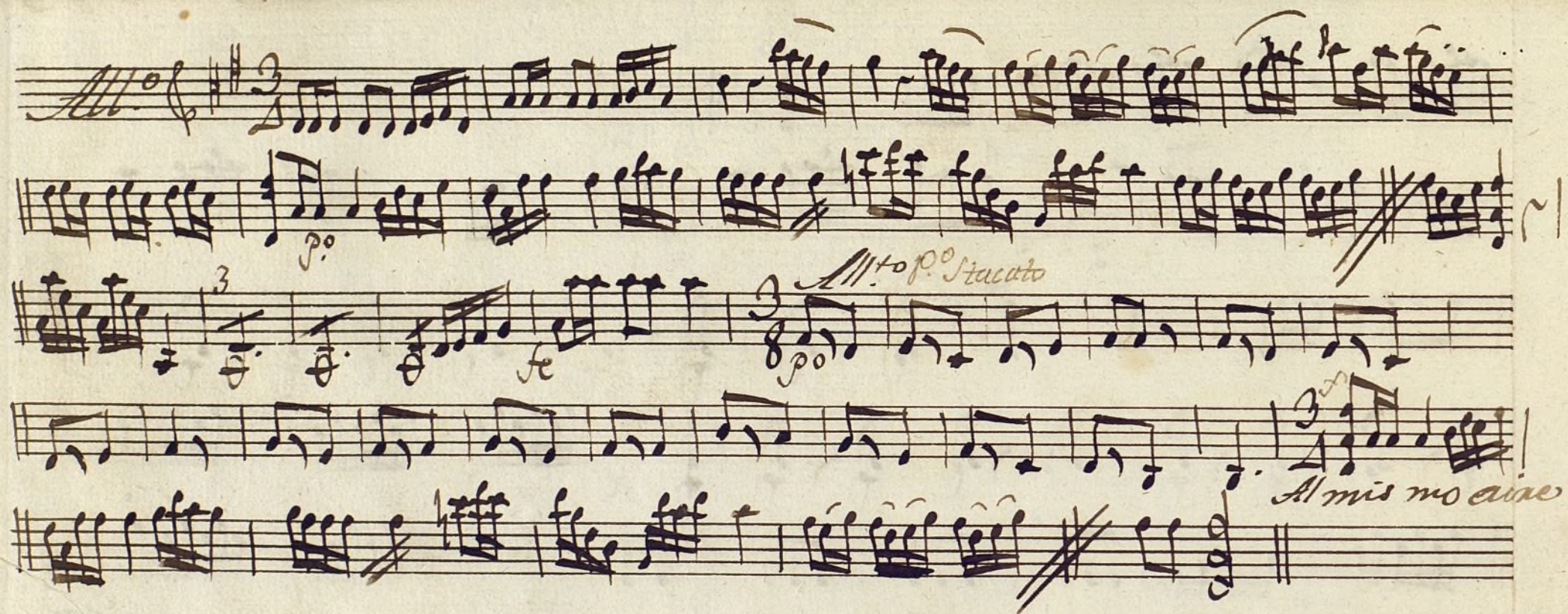
f *p* *f* *u* *p* *po*

f *p* *f* *u* *p* *po*

All.^o $\frac{2}{4}$



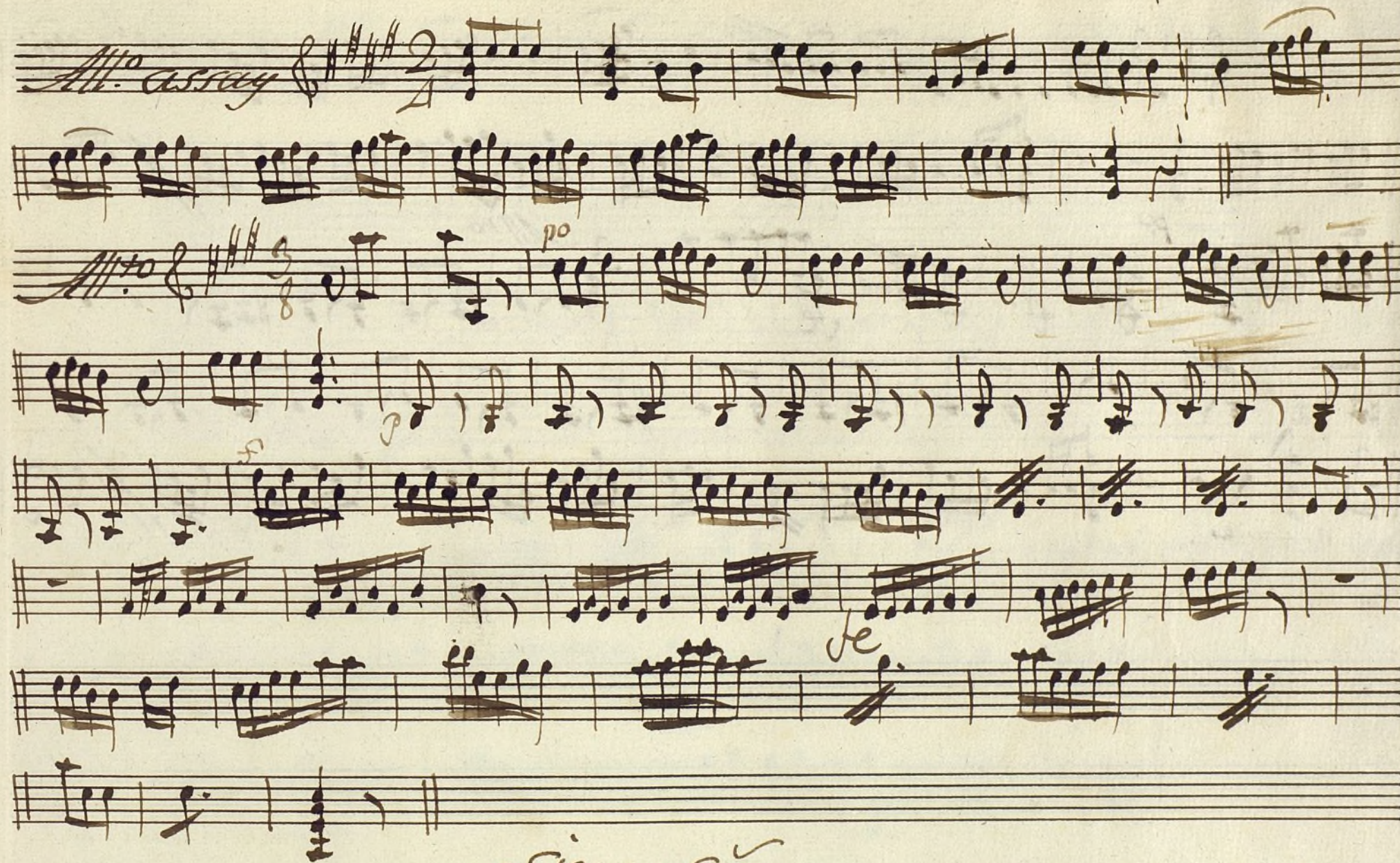
V. Sep.



A handwritten musical score on ten staves. The notation includes treble clefs, a key signature of two sharps (F# and C#), and a 6/8 time signature. The music features a variety of note values, including eighth and sixteenth notes, as well as rests. There are several dynamic markings in brown ink: *po* (piano) at the beginning of the second staff, *fe* (forte) on the third and eighth staves, *si due* (crescendo) on the fifth staff, *Parola* (piano) on the sixth and ninth staves, and *fe* (forte) on the eighth and tenth staves. The manuscript is written in brown ink on aged, slightly discolored paper.

Handwritten musical score on seven staves. The notation includes various musical symbols such as notes, rests, and clefs. Annotations in brown ink are present: "5e" above the first staff, "Punto alto" above the fourth staff, "seg. en frances" below the fourth staff, "Pii" below the fifth staff, and "si qua" appearing twice above the sixth staff. The word "Parola" is written in cursive at the end of the fourth staff.

Parola



Sigue sep.



Flauta 1^a Ton. a 3. 2^a parte de los Españoles viajeros

Oboe Prim^o tace hasta la canción de tadeo

Cancion 6/8

All^o Comodo

Dacapo sin parar

Sep. Oboe

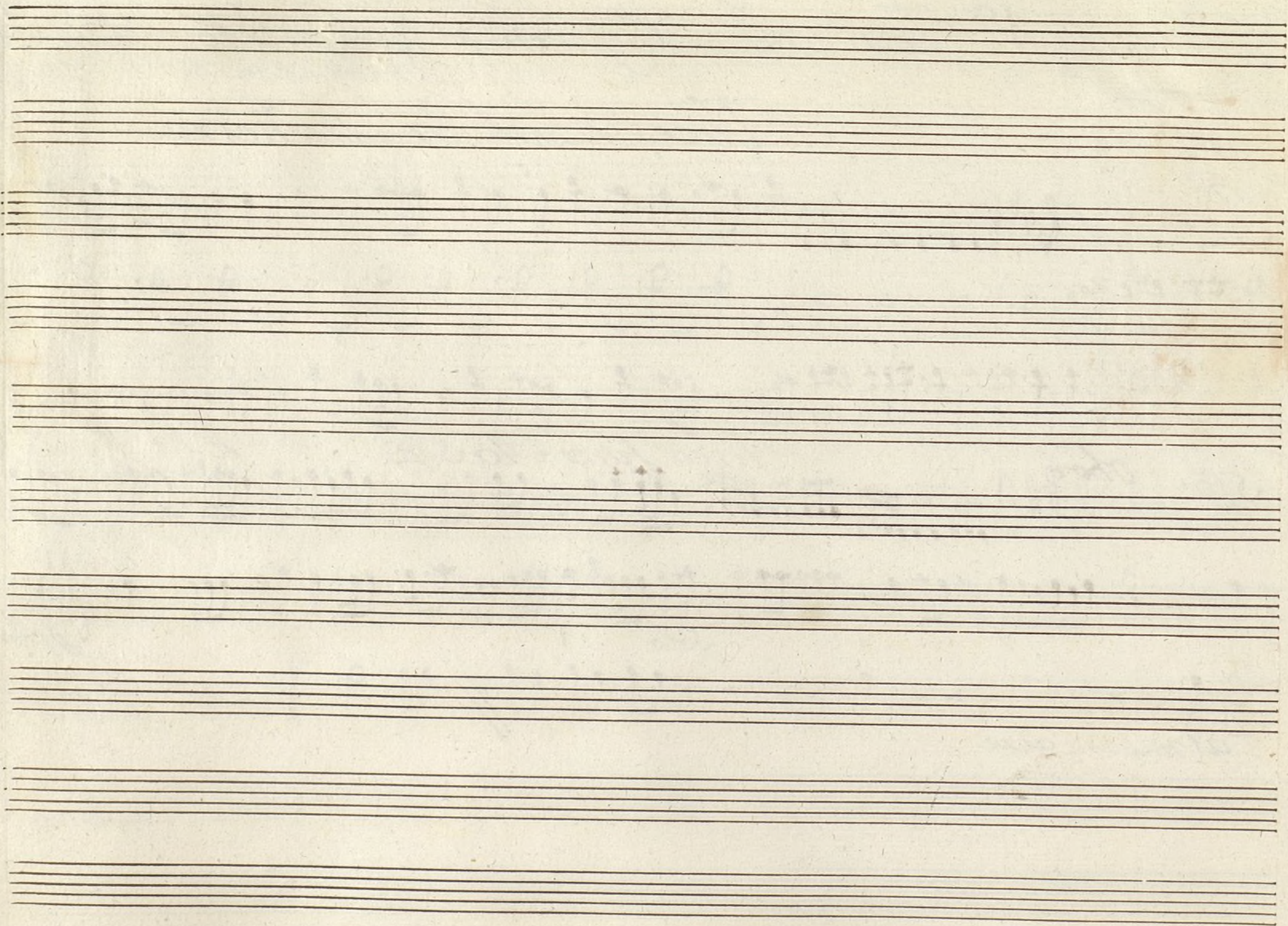
All^o

tace hasta la Sep^{ta}

Parola

Solo

al mismo aire



Ayuntamiento de Madrid

Flauta 2ª Ton.ª a 3ª 2ª parte de los Españoles Viajantes

Oboe 1.º

Cancion *All.º Comodo*

Da capo. sin pausas

Oboe

Tace hasta las Sep.

Alleg.º

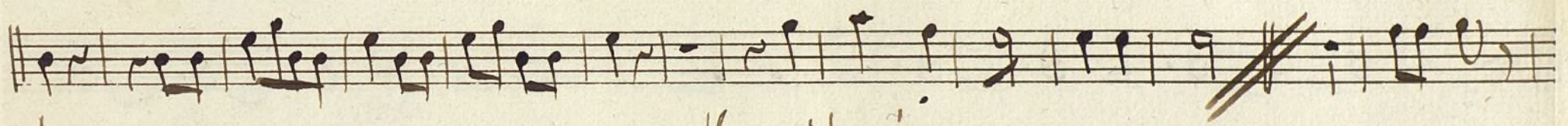
Solo

All.º al mismo aire


Ayuntamiento de Madrid

Trompa 1.^a Ton.^a a 3.^a 2.^a parte de los Españoles Viajantes

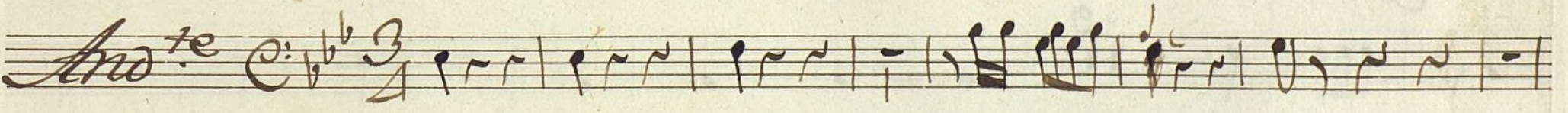
And.^{te} assay 

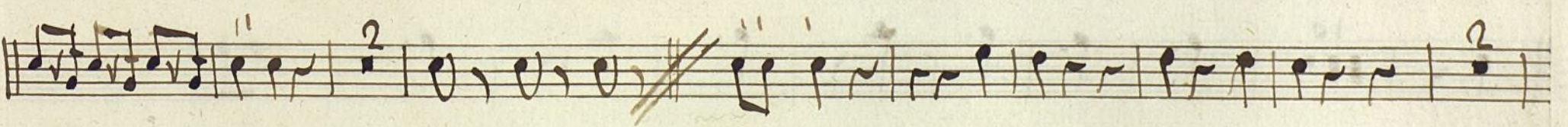


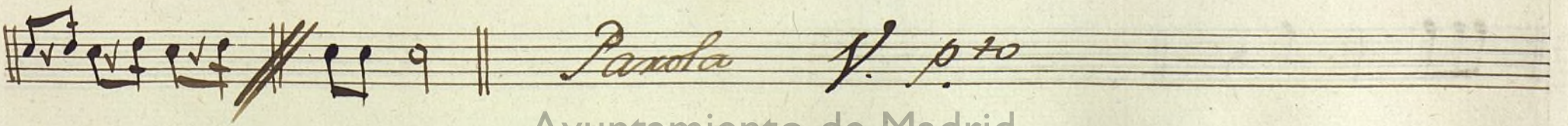




*Tace asta las Seq.^{as}
en frances*

And.^{te} 





Pastoral *no se dice* $\text{C}:\flat\flat\frac{6}{8}$

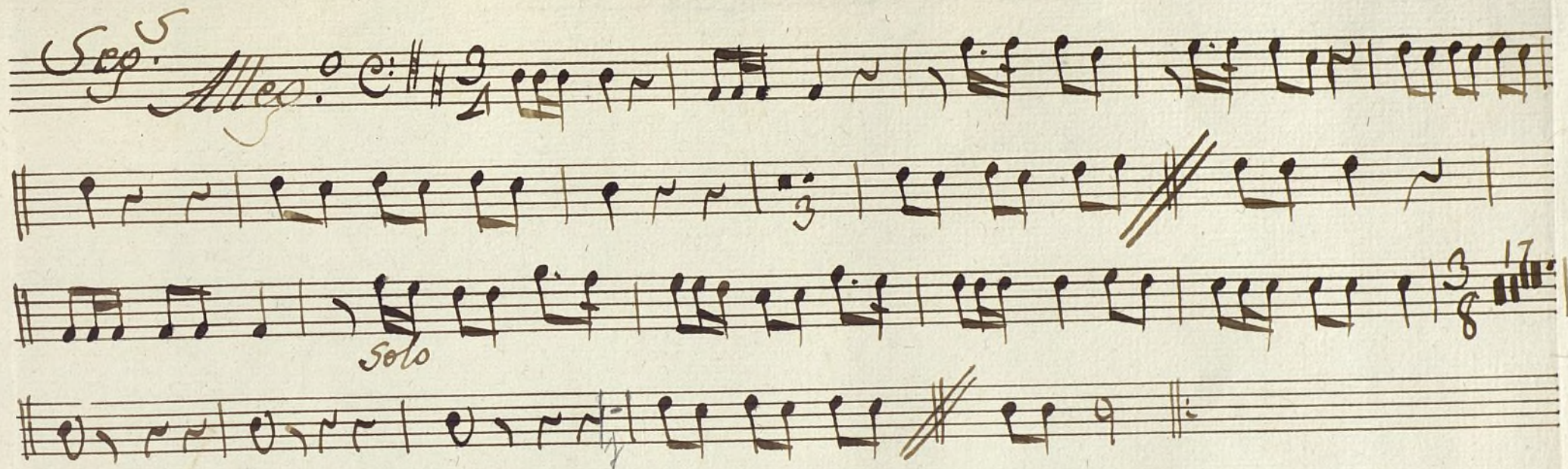
Parola

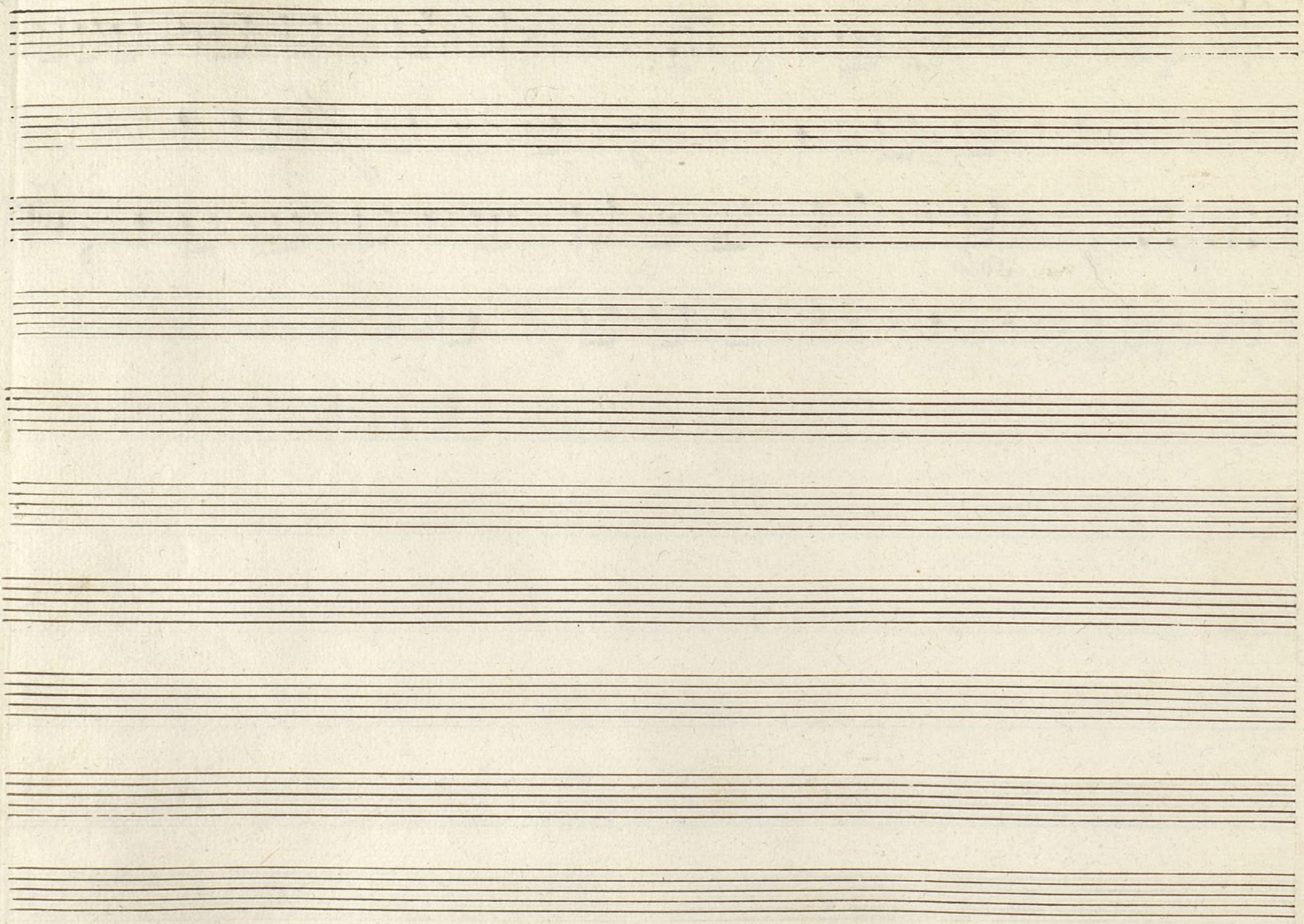
Tace sep.^o
y Alleg.^o

Alleg.^{to} $\text{C}:\sharp\sharp\frac{3}{8}$

9


10

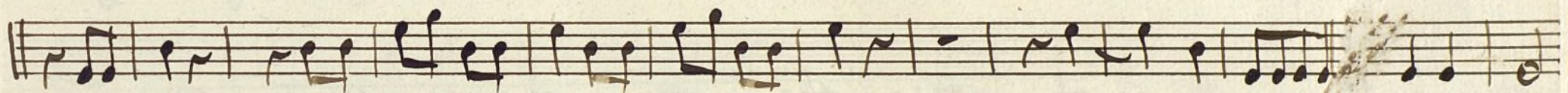




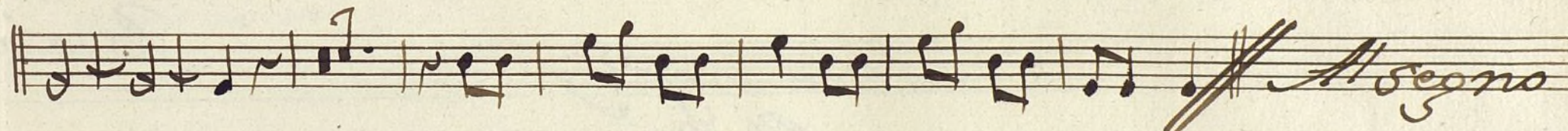
Ayuntamiento de Madrid

Trompa 2^a Fl^a a 3 2^a parte de los Españoles Viajantes


And^{te} a ray $\text{C} \# \frac{2}{4}$ 

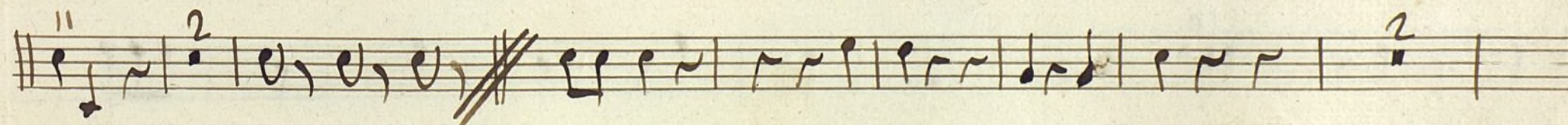


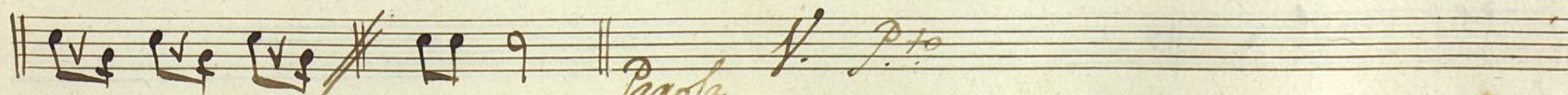


 *Allegro*

*Tace asta la sep.
en frances*

And^{te} $\text{C} \flat \flat \frac{3}{4}$ 





Parola V. P. 10
Ayuntamiento de Madrid

Pastoral *no se dice*

Tace Sep⁵
Alleg.^o

Parola

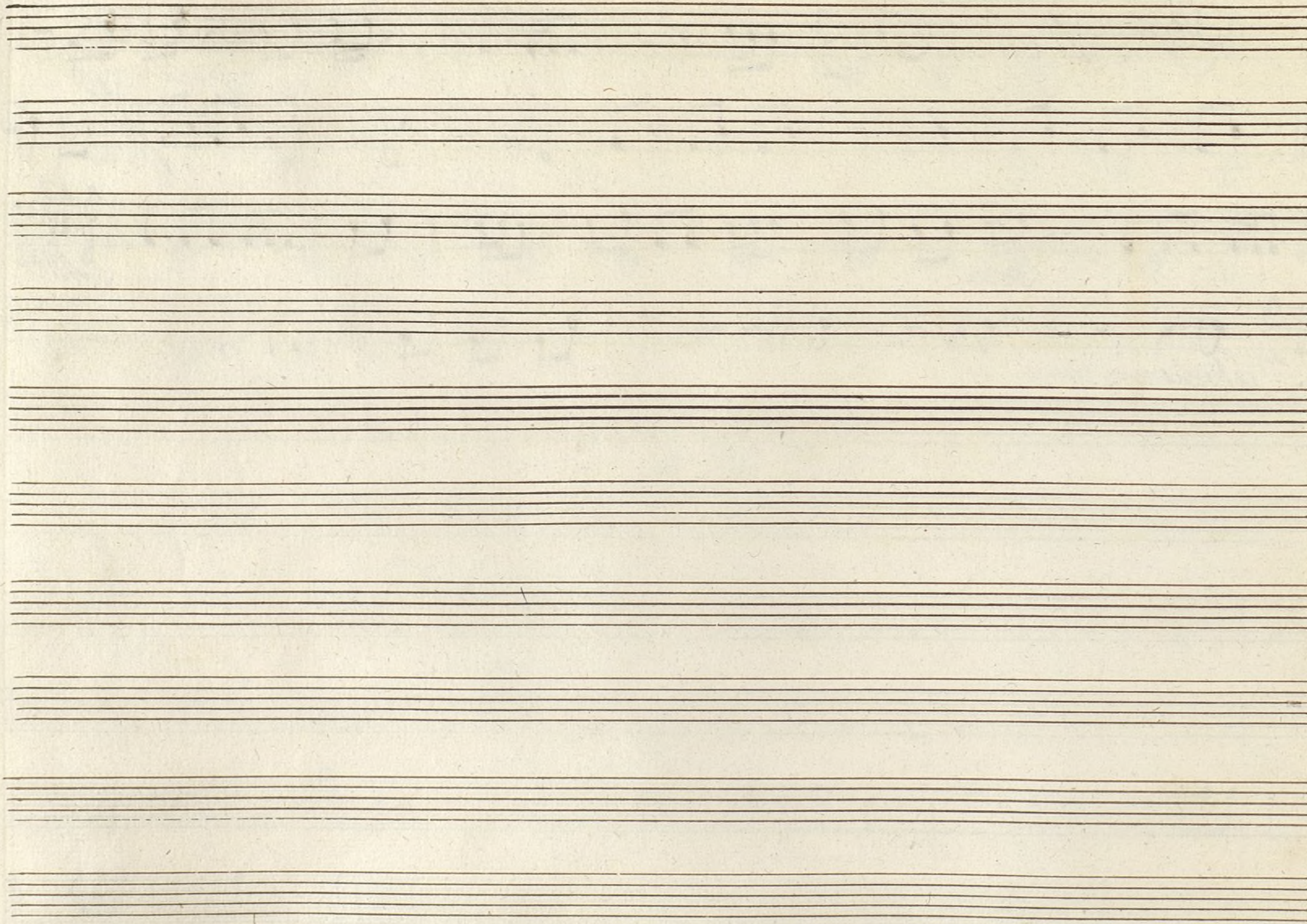
Alleg.^{to}

Seg. Alleg. $\text{C} \sharp \sharp \frac{3}{4}$

solo

al mismo aire

All. to



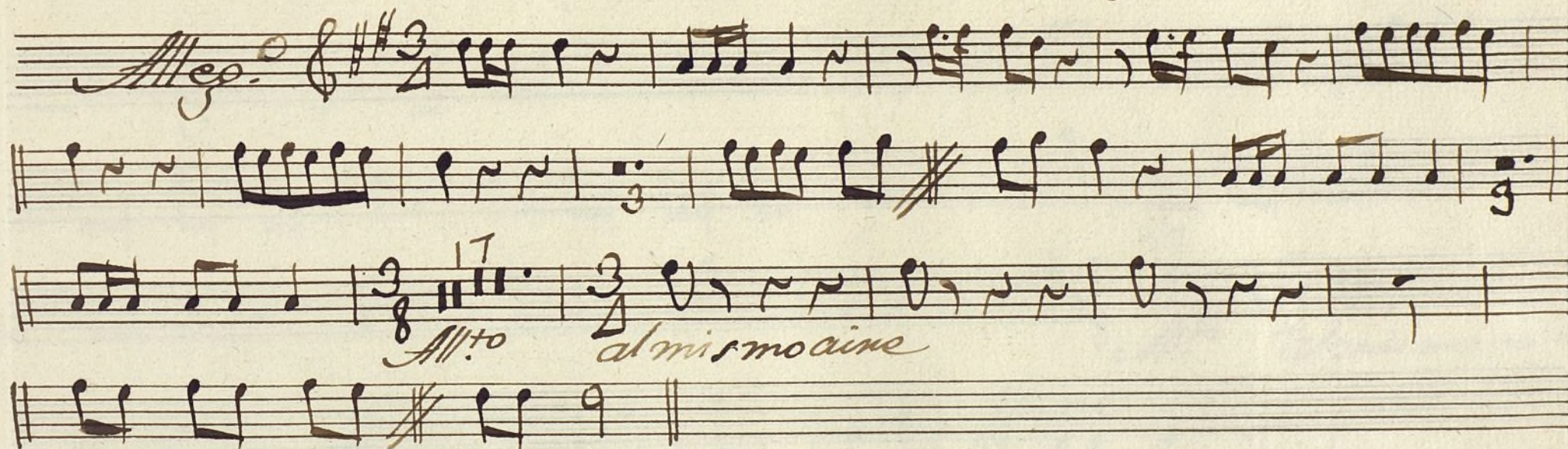
Ayuntamiento de Madrid

t

Mus 122-7

Clarín 1.^o Ton.^a a 3.^a 2.^a parte de los Españoles Viajantes

Tace asta las portexas seg.



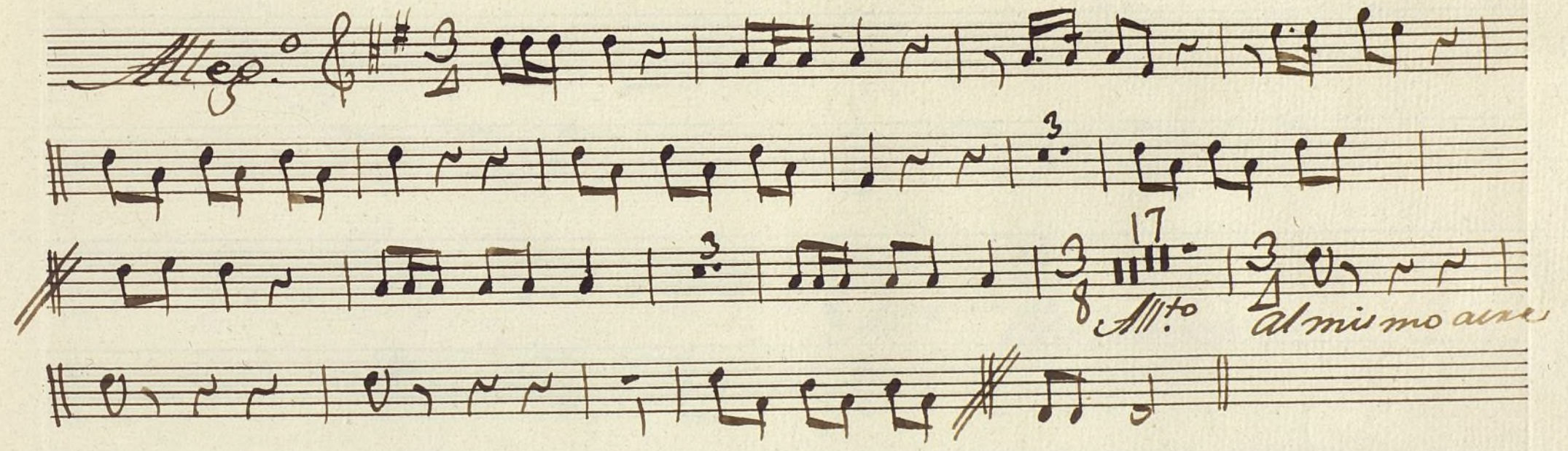
Ayuntamiento de Madrid

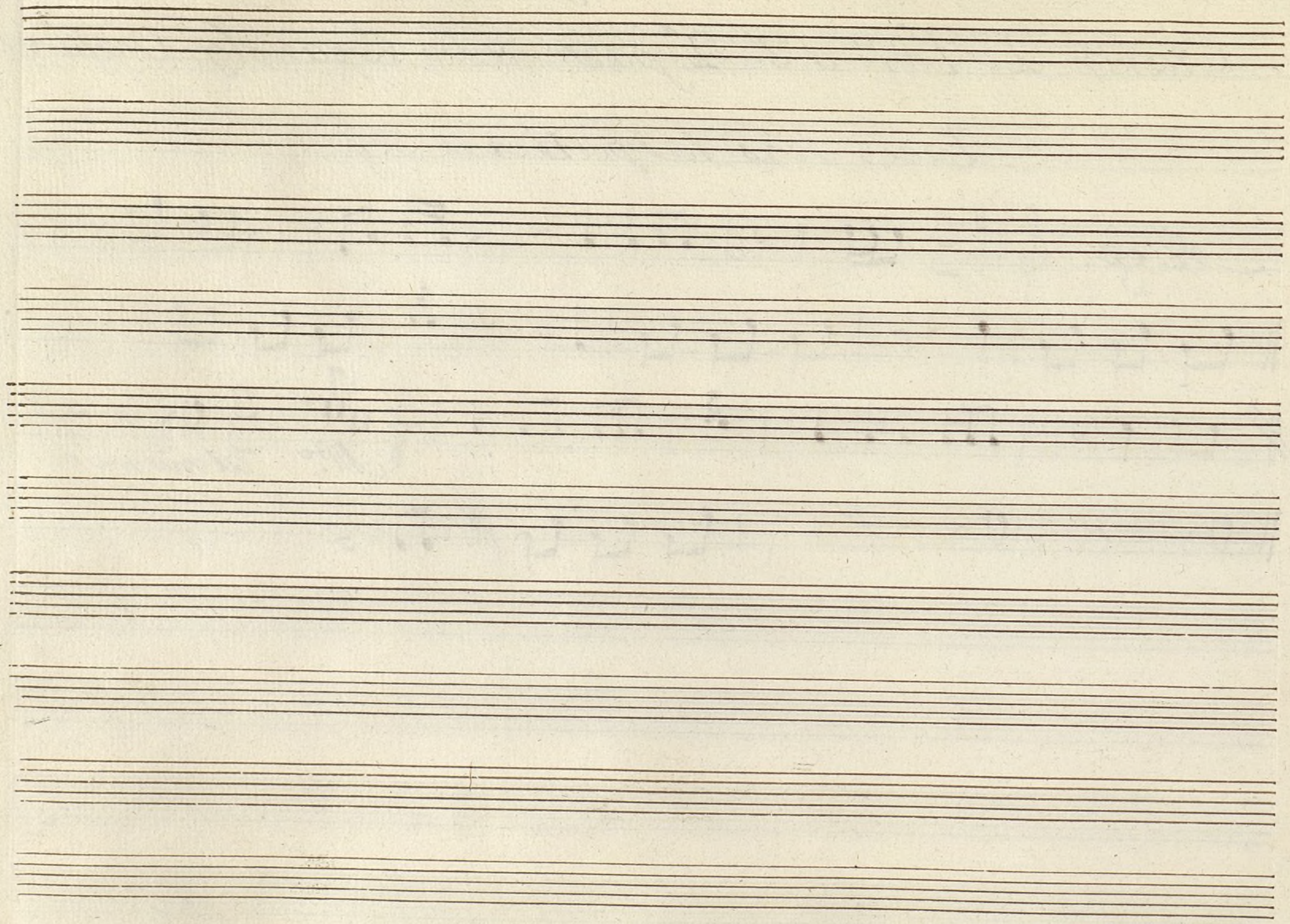
1

Mus 122-7

Clarín 2.^o Ton.^a a 3.^a 2.^a parte delos Españoles Viajeros

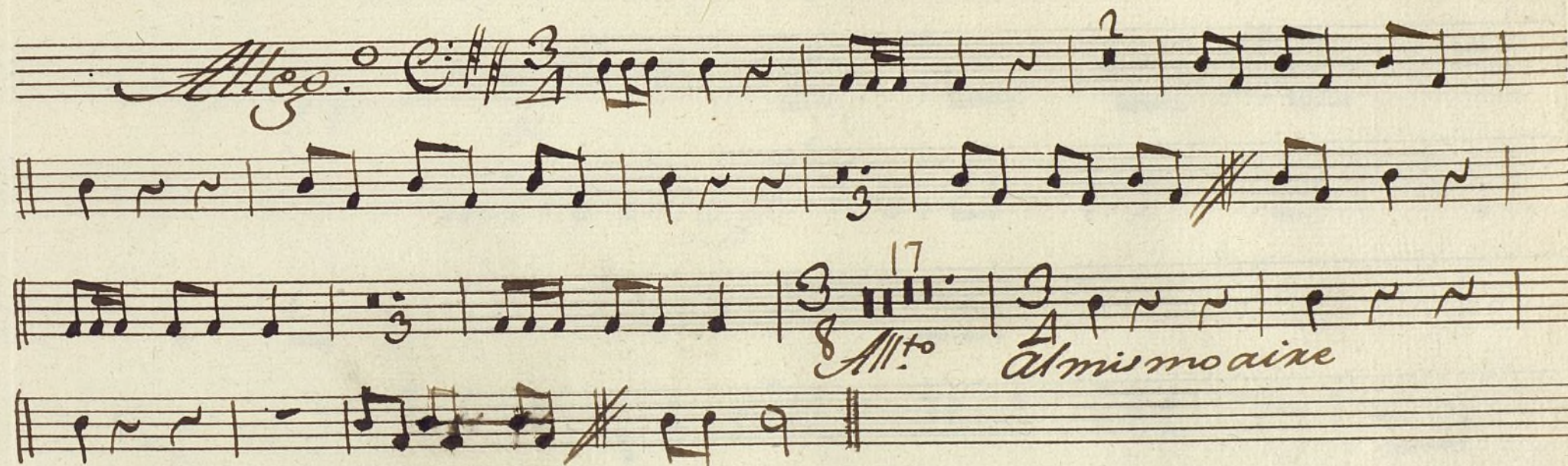
Tace has las portreras Sep.^o

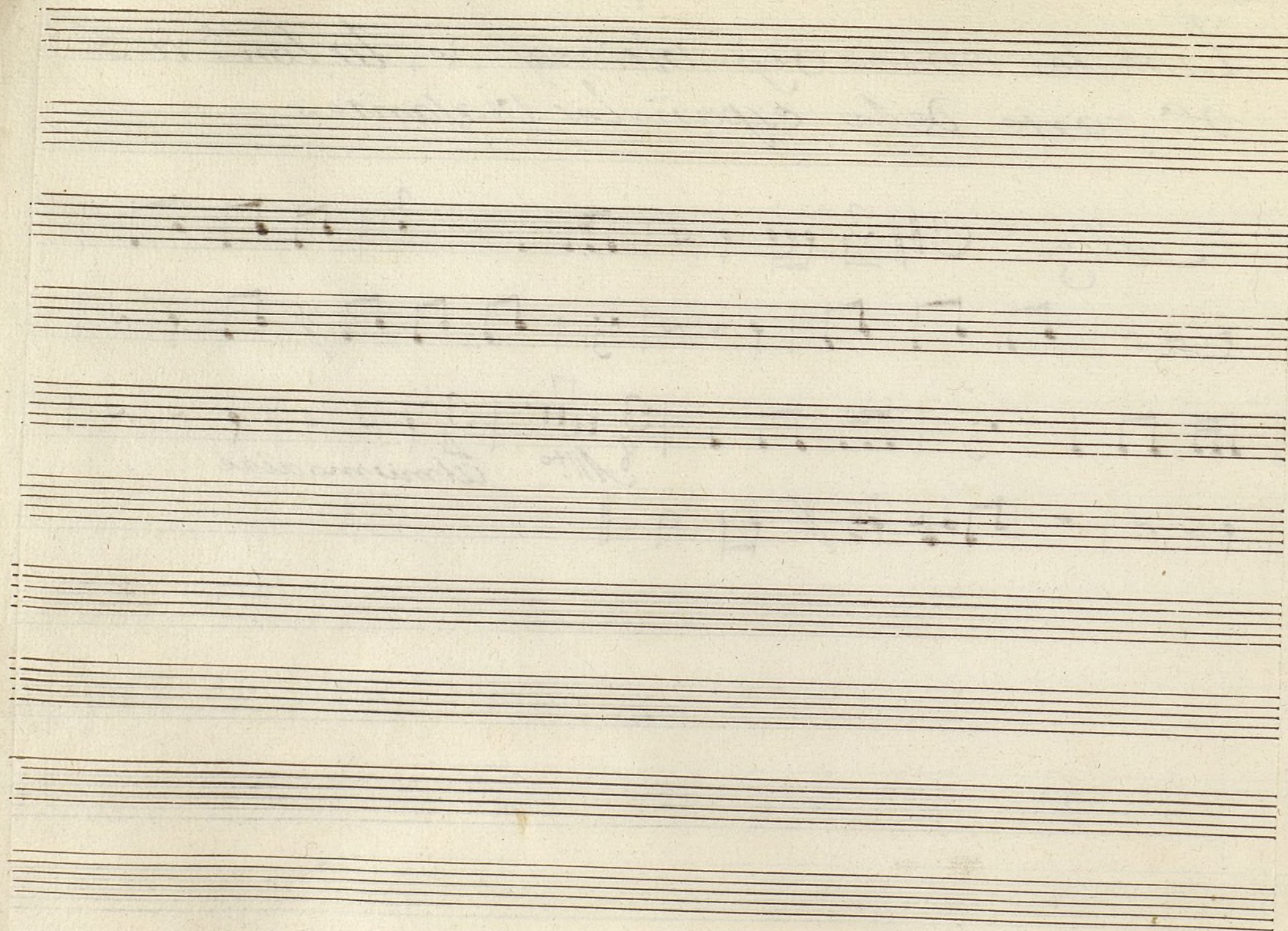
Alleg.^o 



Ayuntamiento de Madrid

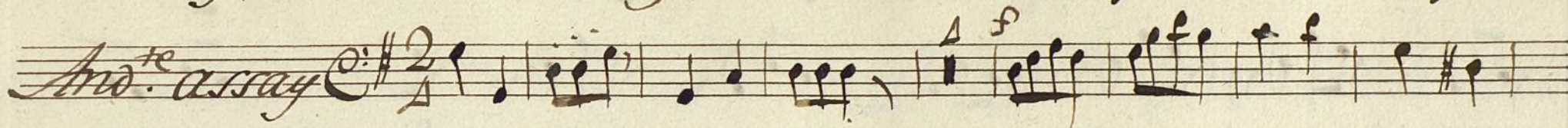
t
 Timbales en las Seg.^a últimas de la Ton.^a a 3.^a
 2.^a parte de los españoles viajeros

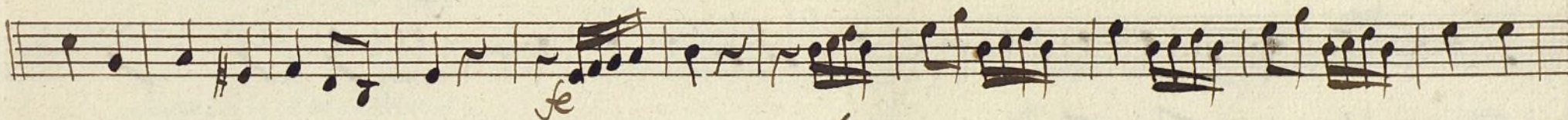


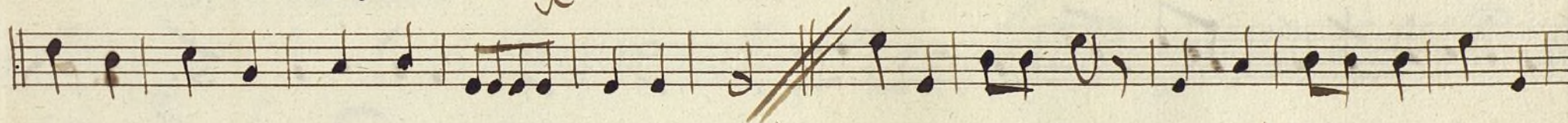


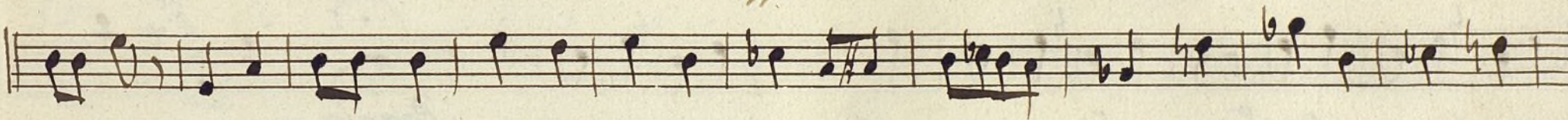
Ayuntamiento de Madrid

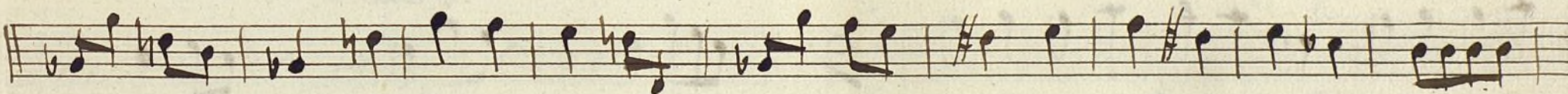
Bajo Ton.^a a 3 sep.^{da} parte de los Españoles Viajantes

And.^{te} assay 

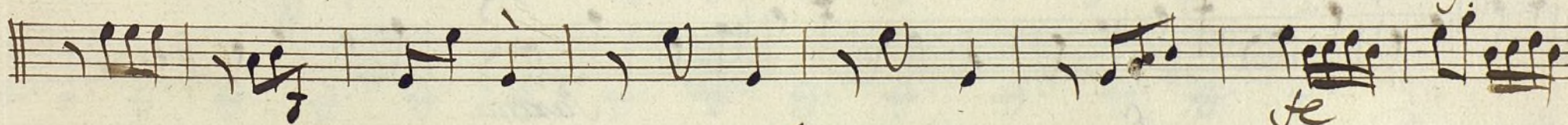


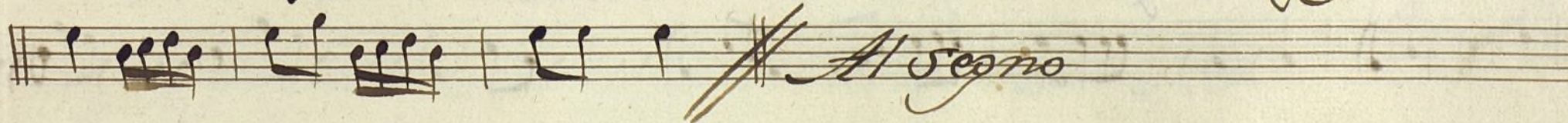


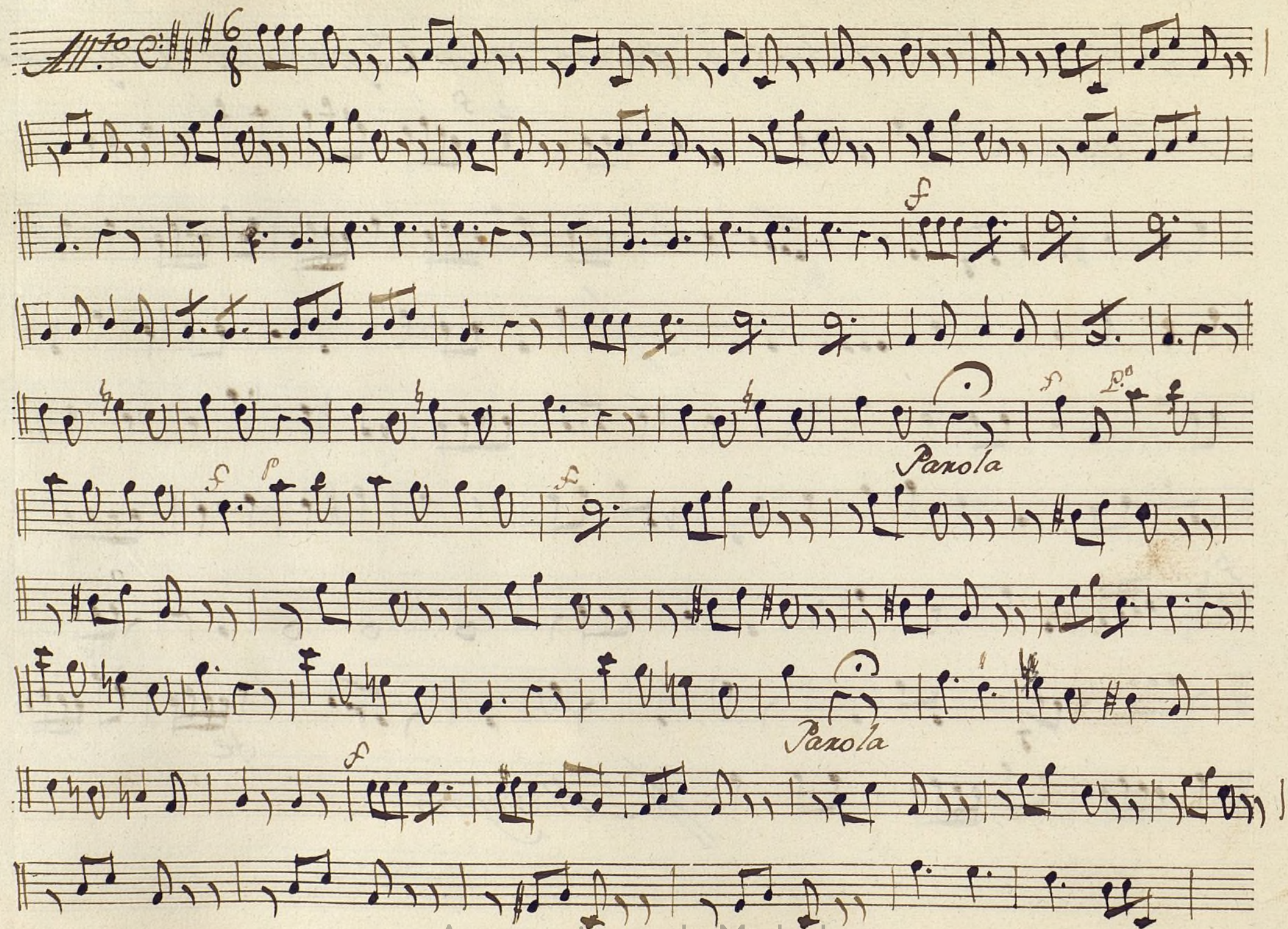


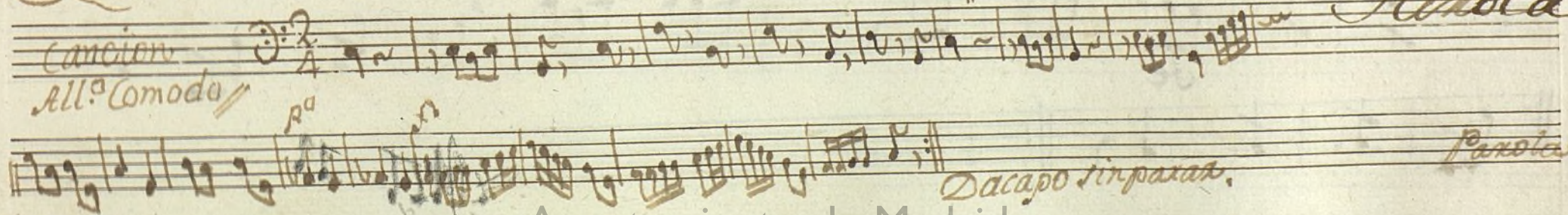
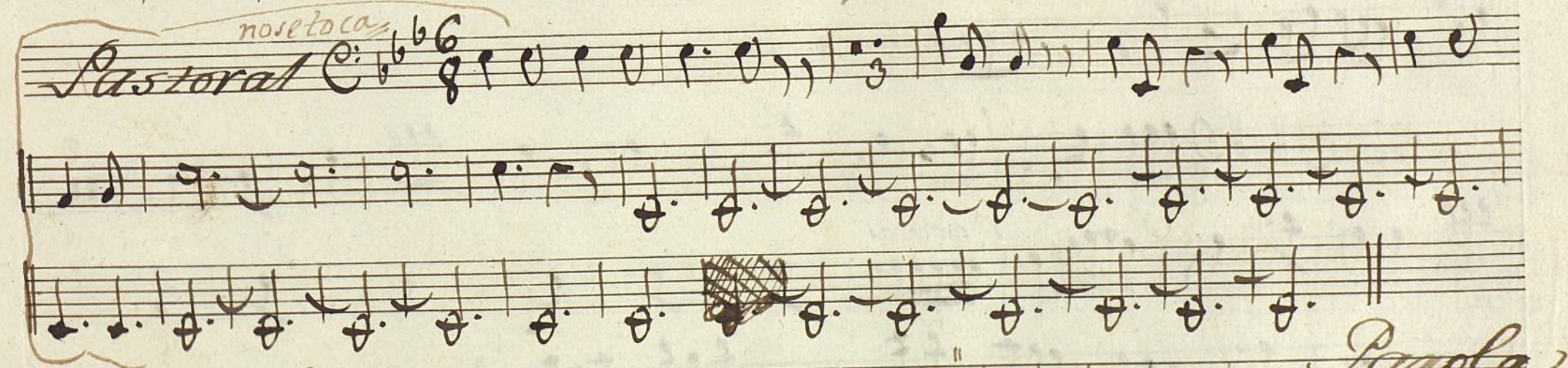
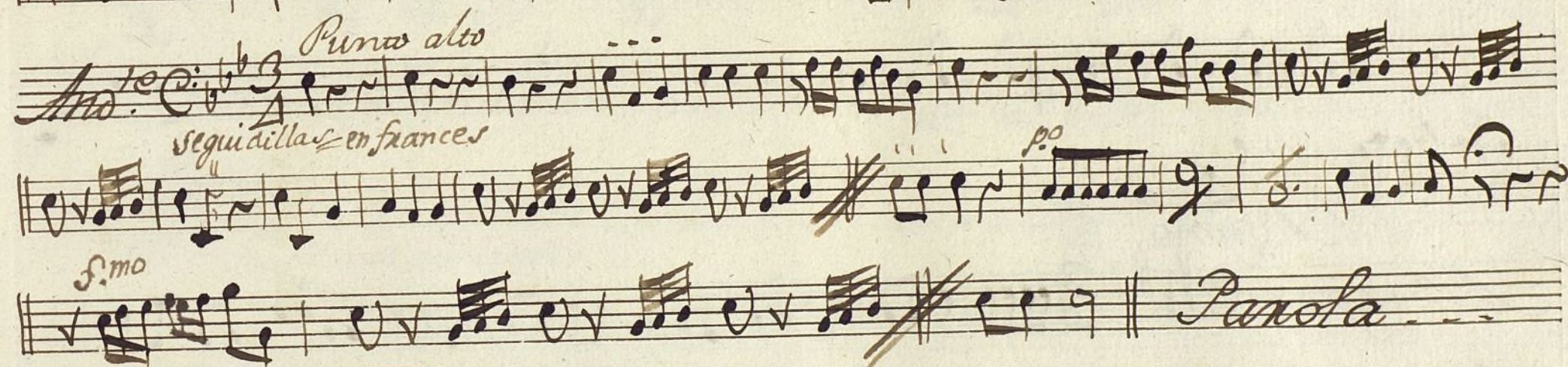
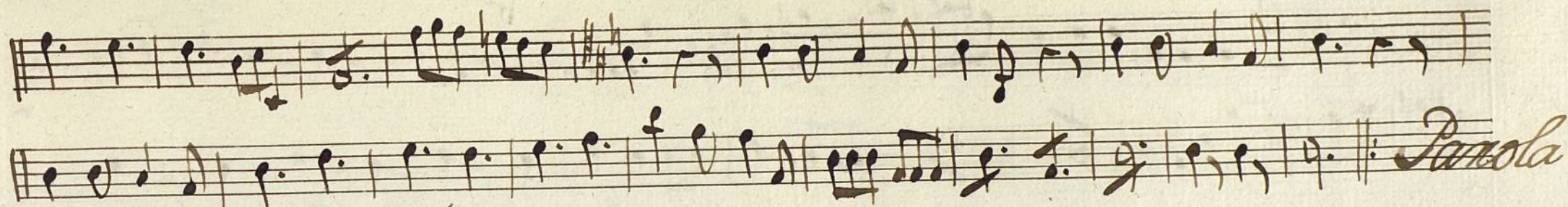


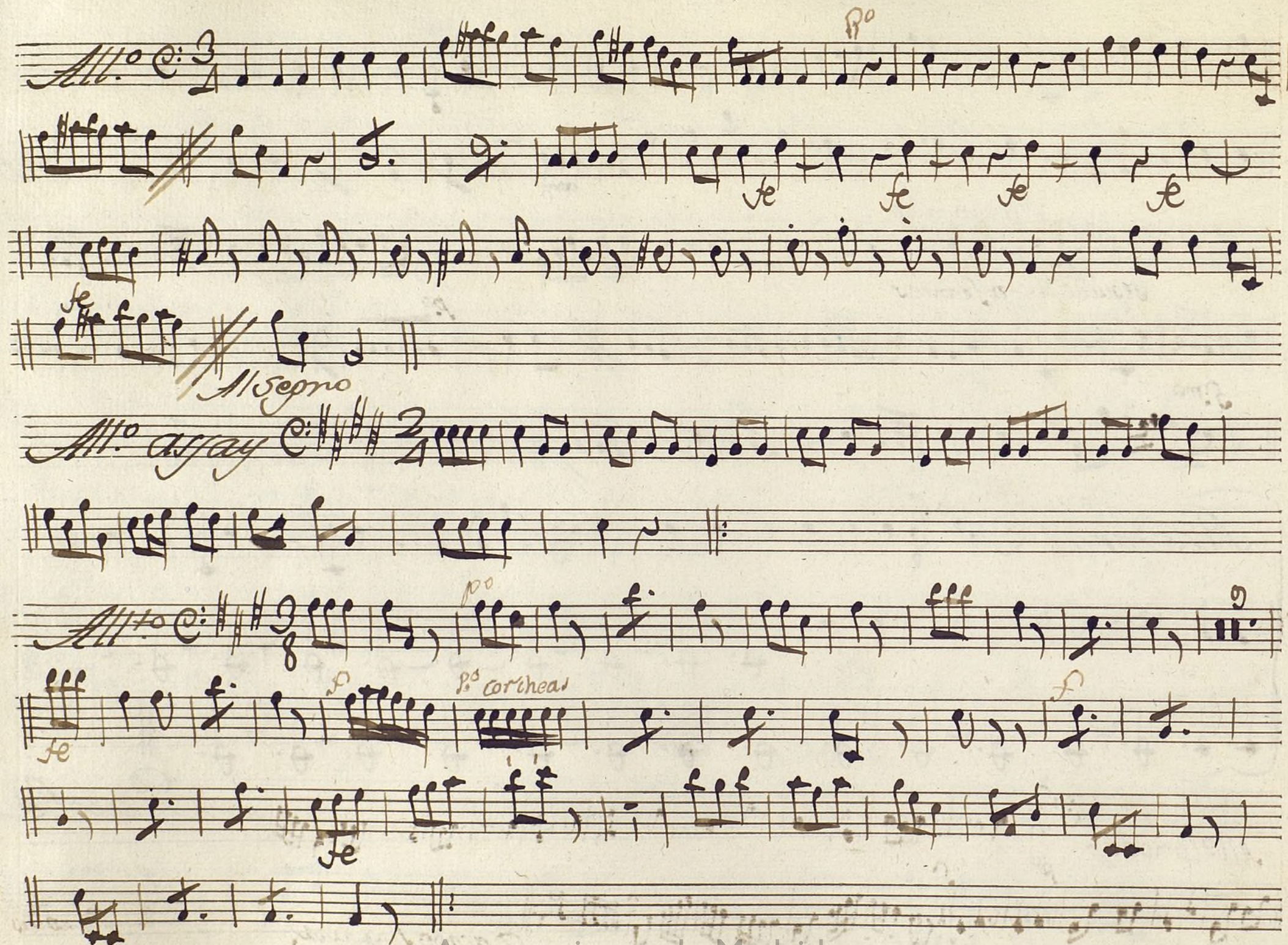












Ses.^o *Alleg.^o* *C* *3/4*

p.o *f.e*

Al mismo aire

Ayuntamiento de Madrid