

Leg.º 8.º N.º 25.

Mus. 61-27

+

Leg.º 8

Sainete

Plebejo
El País Noble ó el Mاماuche

61-27

Cubas

Todos

All.^o

Musical notation for the first system, including staves for Cubas, Todos, and All.º. The notation includes clefs, key signatures (two flats), and a 3/8 time signature. The first two staves (Cubas and Todos) contain rests. The third staff (All.º) contains a melodic line with eighth notes.

Vocal and piano accompaniment staves with lyrics. The lyrics are: *Mo ris qui lios de la A ra bia*, *ve nid ve nid*, and *a pres tar el*. The piano part includes a treble clef, a bass clef, and a key signature of two flats. There is a large 'X' mark over a note in the piano part.

Jura men to llegad \div

Gar \div \div \div

el Ju ra men to Ja ced si si Ja ced si

si Ja ced

Za la me le Za la me le Za la me le Za

Ma ja meta
la me le Za la me le za la me le

per jor di na per jor di na nu pre gar se vaer ma x ti na

es Ma ti na e que ver fax un Me ti na un Me xi na

De jar di na de lor di na de lor di na dur fur ban tae

ci mi ta na dar fur ban tae ci mi ta na dar fur

ban tae ci mi ta na da ra da ra basto na ra per de fen

The image shows a page of handwritten musical notation on aged paper. It consists of five systems of music, each with a vocal line and a bass line. The lyrics are written in a cursive hand below the notes. The first system includes a treble clef and a key signature of one sharp (F#). The second system has a '3' above the final note of the vocal line. The third system has a '2' above the final note of the vocal line. The fourth system has a '1' above the final note of the vocal line. The fifth system has a '1' above the final note of the vocal line. The paper shows signs of age, including foxing and some staining.

der pa les ti na

chu ba la chu ba

la ba ba la chu ba la

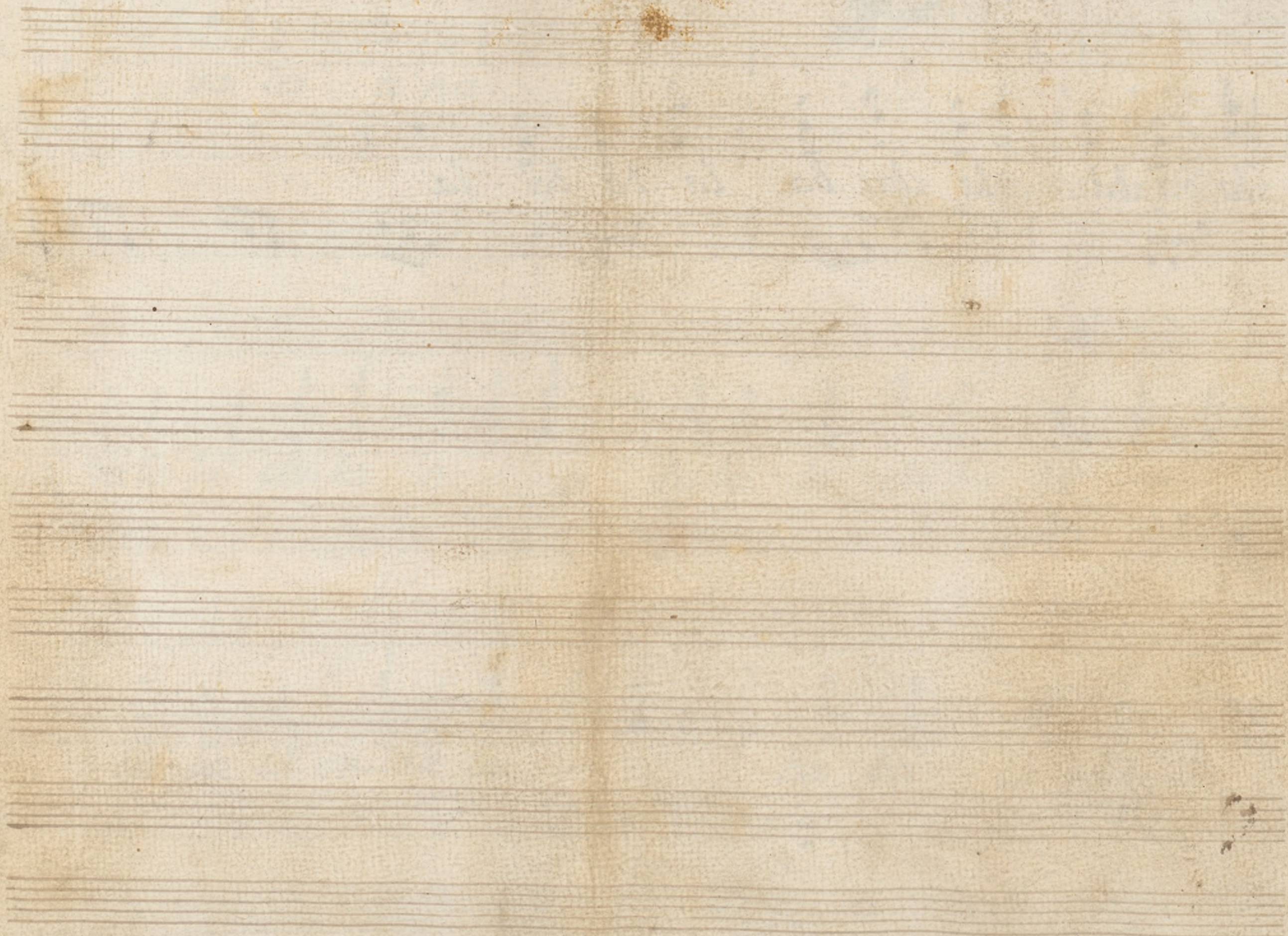
ba ba la chu ba la

ba ba la chu ba la

ba ba la chu ba

Handwritten musical notation on a single page. The top staff is a vocal line with lyrics: *la ba ba la chu ba la ba ba la*. The bottom staff is a piano accompaniment line with chords and eighth notes. The music is written in a simple, early manuscript style.

Four empty musical staves, each with a clef and a key signature signature, arranged vertically below the first two staves.



Violin 1^o

Saynete

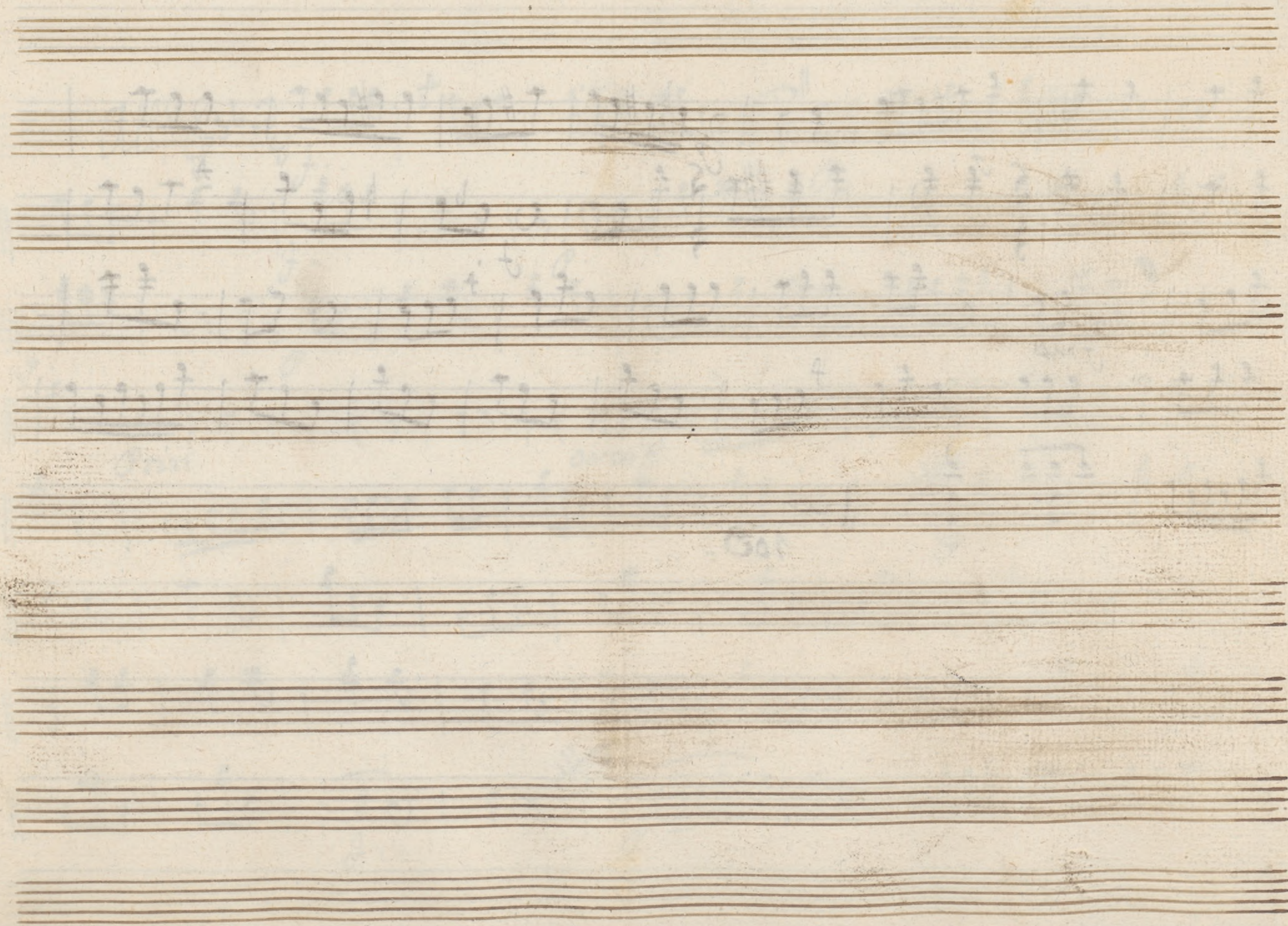
.. Copla ..

El Payo Noble o Mama-uche.

61-27

A handwritten musical score consisting of five staves. The notation includes various rhythmic values, accidentals (sharps, naturals, flats), and dynamic markings such as *f*, *gmo*, and *p*. The piece concludes with a double bar line and a fermata. The paper shows signs of age and wear.

109..



Violini. 1.^o

Clavinate

Copla.

El Payo Noble o el Mameauche

All.^o $\text{F} \flat \text{B} \flat$ $\frac{3}{8}$ *fff* | *ff* | *fff* | *ff* | *ff* | *ff* | *ff* | *ff* | *ff* | *ff* |

ff | *ff* | *fff* | *ff* | *ff* | *ff* | *ff* | *ff* | *ff* | *ff* |

fff | *ff* | *ff* | *ff* | *ff* | *ffff* | *ff* | *ffff* | *ff* |

ff | *ff* | *ff* | *ff* | *ff* | *ff* | *ff* | *ff* | *ff* | *ff* |

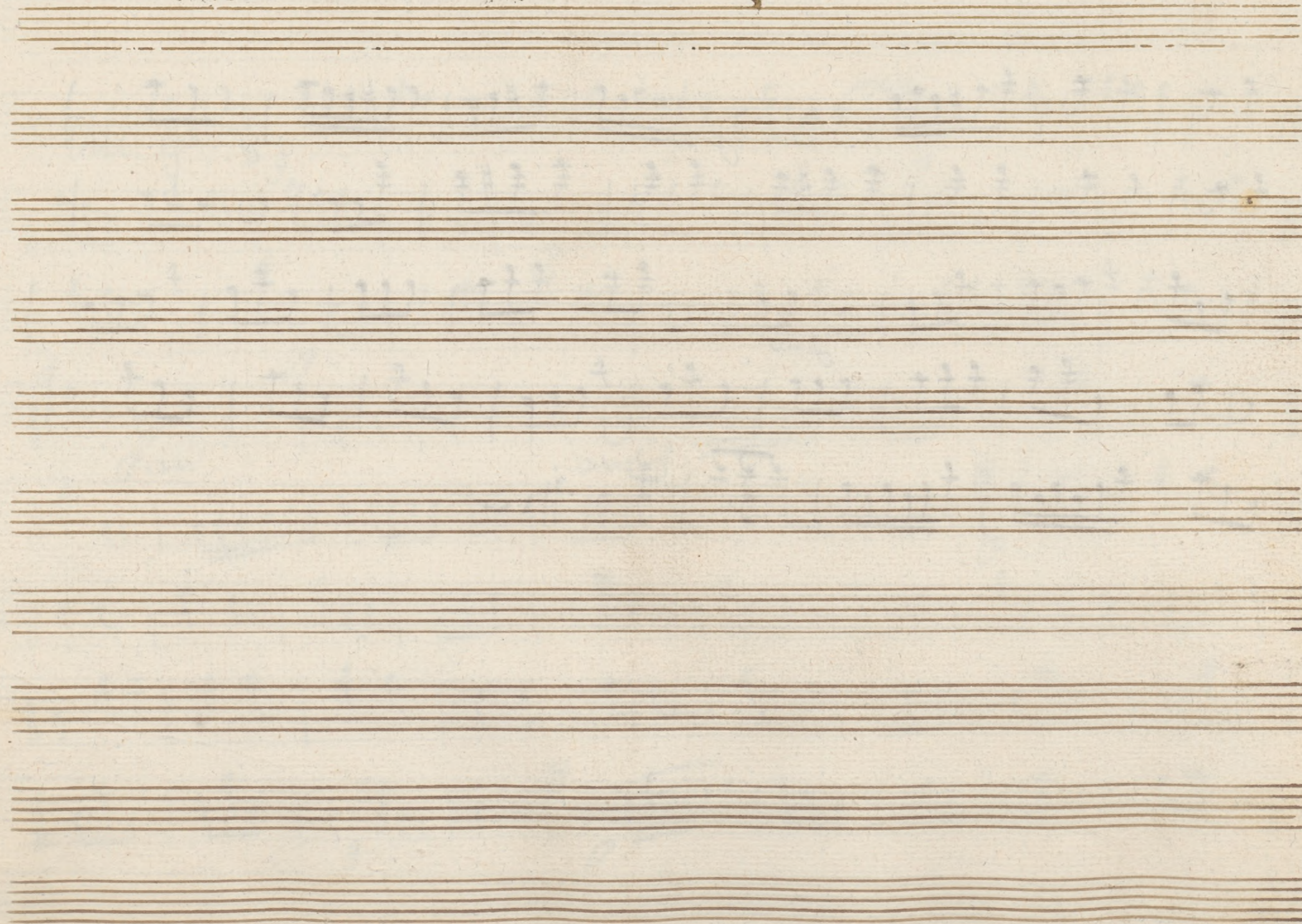
ff | *ffff* | *ffff* | *ff* | *ff* | *ff* | *ff* | *ff* | *ff* | *ff* |

ff | *ff* | *ff* | *ff* | *ff* | *ff* | *ff* | *ff* | *ff* | *ff* |

ff | *ff* | *ff* | *ff* | *ff* | *ff* | *ff* | *ff* | *ff* | *ff* |

ff | *ff* | *ff* | *ff* | *ff* | *ff* | *ff* | *ff* | *ff* | *ff* |

Handwritten musical score on five staves. The notation includes various notes, rests, and accidentals (sharps and naturals). The first staff begins with a double bar line and a fermata. The second staff contains a series of notes with accidentals. The third staff features a treble clef and a sharp sign. The fourth staff includes a dynamic marking 'f' and a fermata. The fifth staff concludes with a double bar line and a fermata. The notation is dense and characteristic of 18th or 19th-century manuscript notation.



Si

Violin 2^o.

Claynete

.. Copla..

El Payo Noble o Mama-uche.

Handwritten musical score on aged paper, consisting of ten staves of music. The notation includes treble clefs, a key signature of two flats (B-flat and E-flat), and a 3/8 time signature. The music features various rhythmic patterns, including eighth and sixteenth notes, and rests. Dynamics such as *f* (forte) and *p* (piano) are indicated. Performance instructions include *arco* and *Pizz.* (pizzicato). The score concludes with a double bar line and a final cadence.

A handwritten musical score on five staves. The notation includes treble clefs, a key signature of one sharp (F#), and a 2/4 time signature. The first two staves feature melodic lines with eighth and sixteenth notes, including slurs and dynamic markings like *p*. The third and fourth staves show a more rhythmic accompaniment with chords and repeated notes, marked with *f*. The fifth staff contains a series of repeated eighth-note patterns, some with slurs, and ends with a double bar line. The paper is aged and shows some staining.



Violin. 2^o

Capla.

Saynete

el Payo Noble o el Mamauche

All.^o G^{\flat} $\frac{3}{8}$ *f.*

f. *Puntado* *arco f.*

A handwritten musical score consisting of five staves. The notation includes various rhythmic values such as eighth and sixteenth notes, as well as rests. The music is written in a style characteristic of the 18th or 19th century. The first staff begins with a treble clef and a key signature of one sharp (F#). The second staff continues the melody. The third and fourth staves feature more complex rhythmic patterns and dynamics, with a 'f' (forte) marking in the third staff and a 'p' (piano) marking in the fourth. The fifth staff concludes the piece with a double bar line and a fermata over the final note.

109.

The image shows ten horizontal musical staves on aged, yellowed paper. The top five staves contain faint, handwritten musical notation in blue ink. The notation includes various note heads, stems, and beams, though they are difficult to read due to fading. The bottom five staves are completely blank, showing only the five-line structure of the staves. There is a small, dark stain at the top center of the page.

..Basso..

Saynete

..Copla..

El Peleayo Noble o el Amanuchi

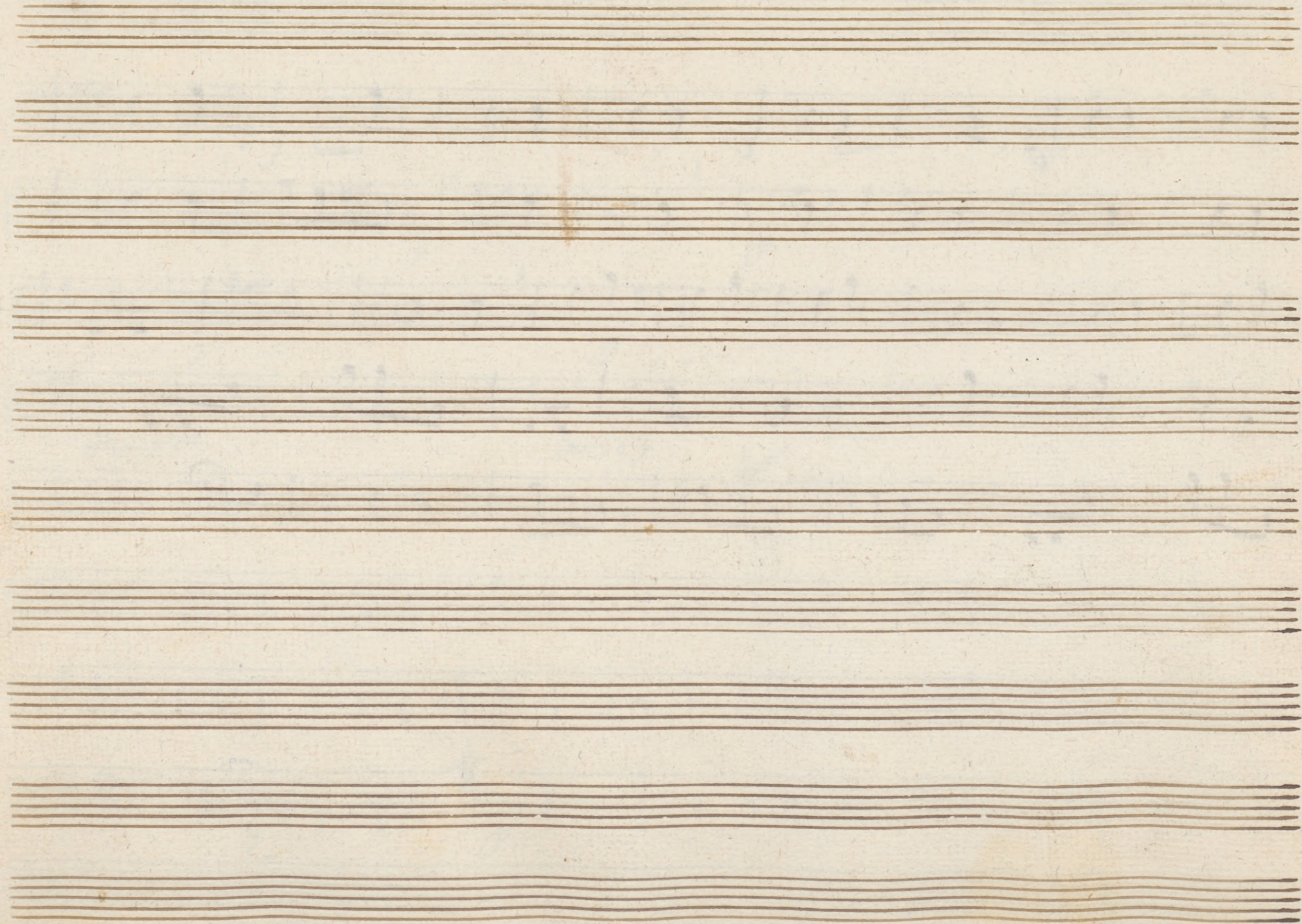
Con Violines, Oboes, Trompas y Basso.

All.^o $\text{C}:\flat$ $\frac{3}{8}$

3. 3. 1. 1. 3. 3. 1. 3. 1. 3.

Punt.^{do} *arco f.* T

Handwritten musical notation on five staves. The notation is in a historical style, possibly from the 18th or 19th century. It features a treble clef on the first staff. The notes are mostly quarter and eighth notes, with some rests. There are some decorative flourishes and a double bar line at the end of the first staff. The paper is aged and shows some staining.



..Balso..

Saynete

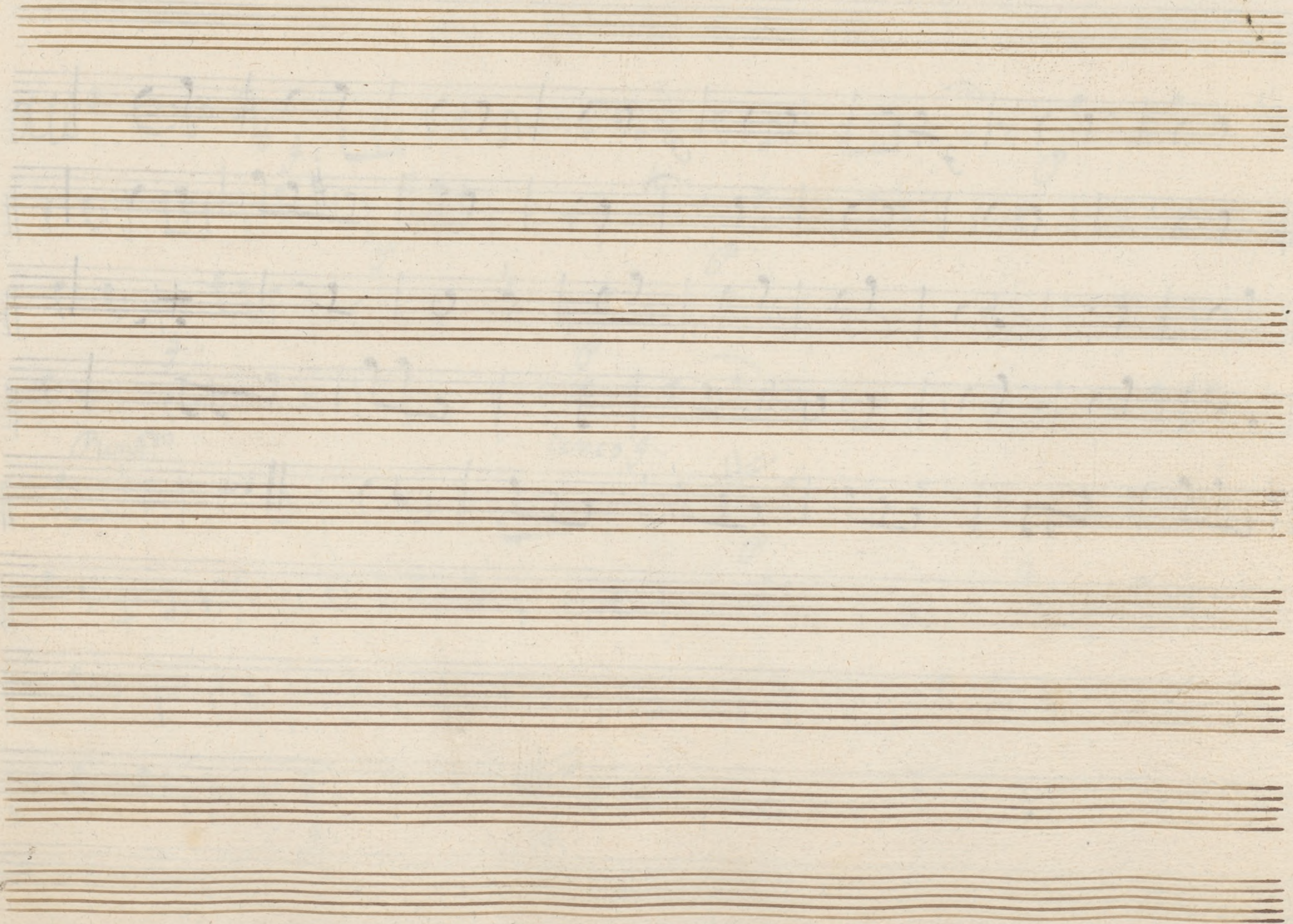
Copla..

El Payo Noble, o Mama=
uche.

Con Violines, Oboeser, Trompas y Basso.

Handwritten musical score on ten staves. The notation includes notes, rests, and various performance markings. The first staff begins with the tempo marking "All.^o" and the time signature "3/4". The key signature is one flat (B-flat). The score contains several dynamic markings such as "p." (piano) and "f." (forte), as well as articulation marks like "Puncto" and "arco". There are also first ending brackets with the number "1" above them. The manuscript is written in dark ink on aged, slightly yellowed paper.

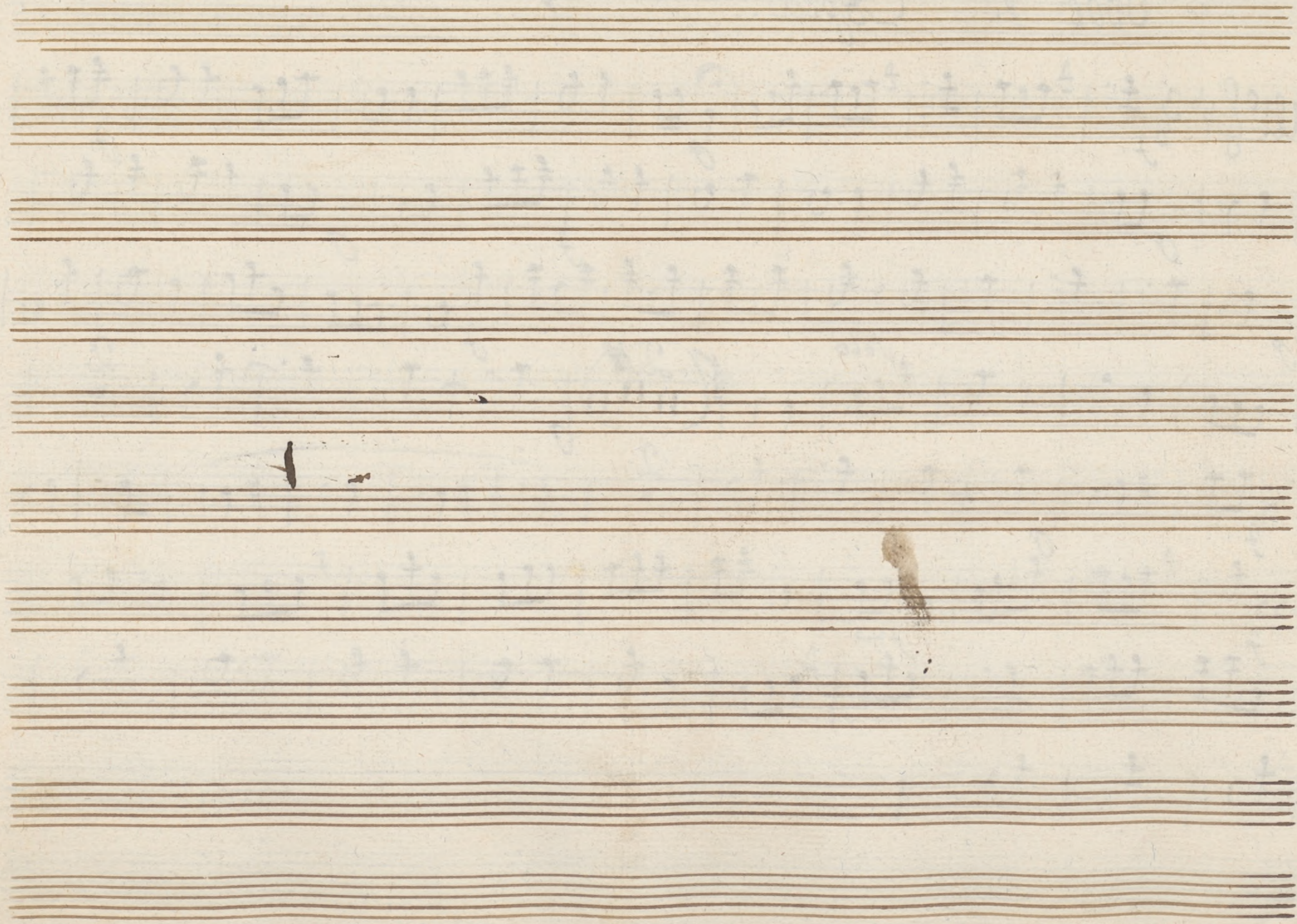
Handwritten musical notation on five staves. The notation includes various notes, rests, and bar lines. The first staff begins with a double bar line and a sharp sign. The second staff contains a trill-like figure with a '3' above it. The third staff has a fermata over a note. The fourth staff has a sharp sign above a note. The fifth staff ends with a double bar line and a 'w' symbol.



Oboe 1.º Copla. Ste El Payo Noble, ò Mamma-uche.

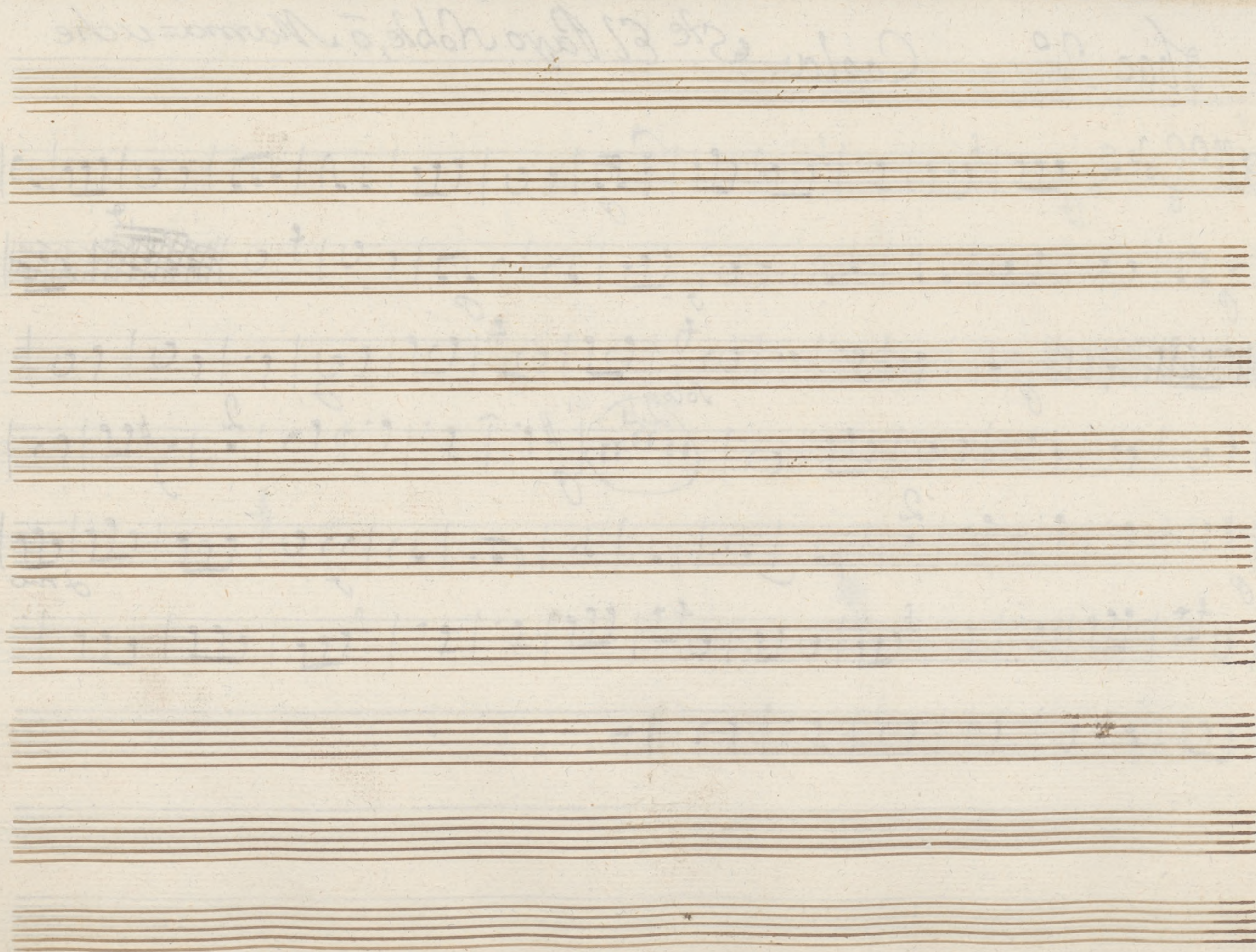
All.^o 3/8

Handwritten musical score for Oboe 1.º, Copla. Ste El Payo Noble, ò Mamma-uche. The score is written on ten staves. It begins with a treble clef, a key signature of one flat (Bb), and a 3/8 time signature. The tempo is marked 'All.^o'. The music features various dynamics including 'f' (forte), 'p' (piano), and 'Solo'. There are several slurs and accents throughout. A circled section on the fourth staff contains a double bar line followed by a '2' and a series of vertical lines, likely indicating a second ending or a specific performance instruction. The piece concludes with a double bar line on the tenth staff.



Id 1200063102

Faint, illegible handwriting at the top of the page, possibly including the name 'C. de la...' and a number 'no. 10'.

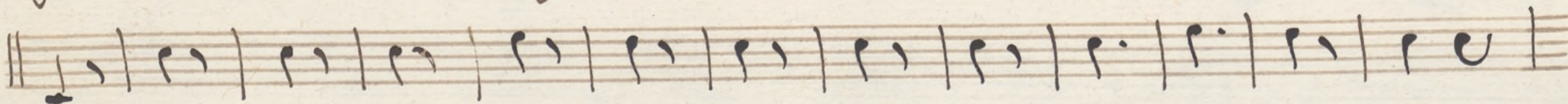
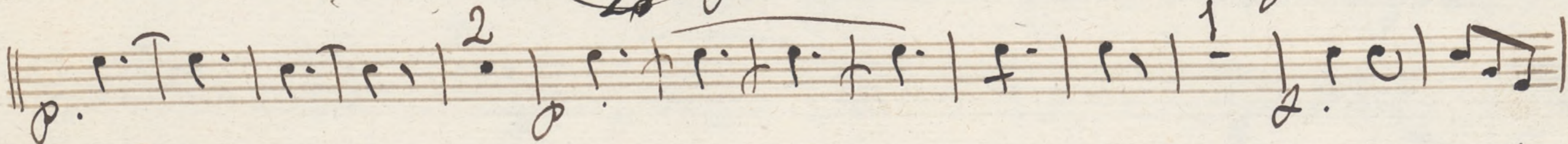
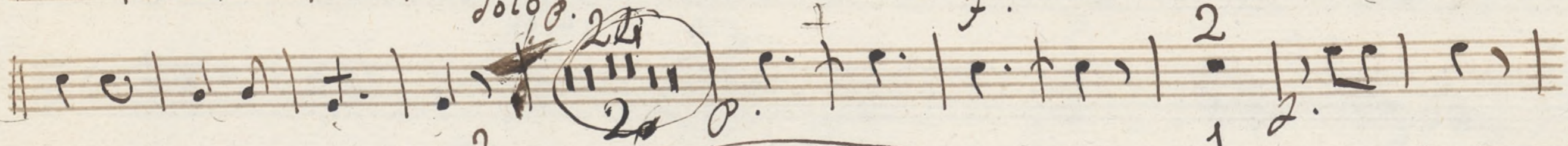
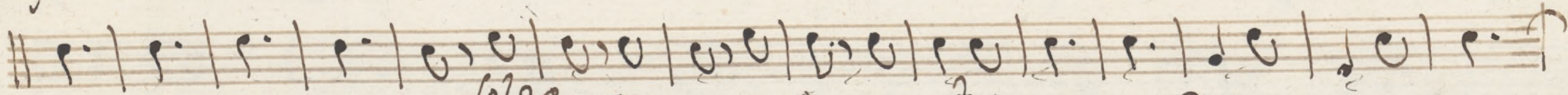
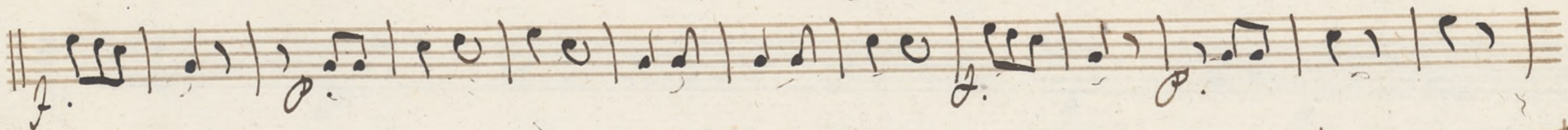
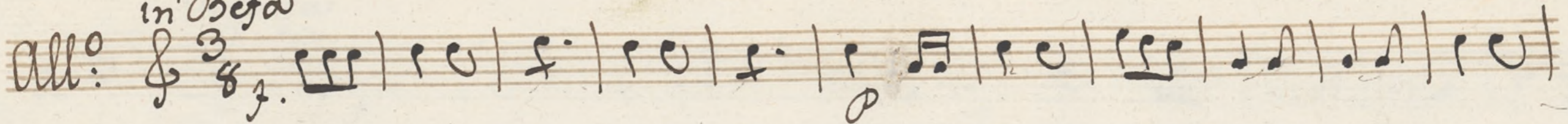


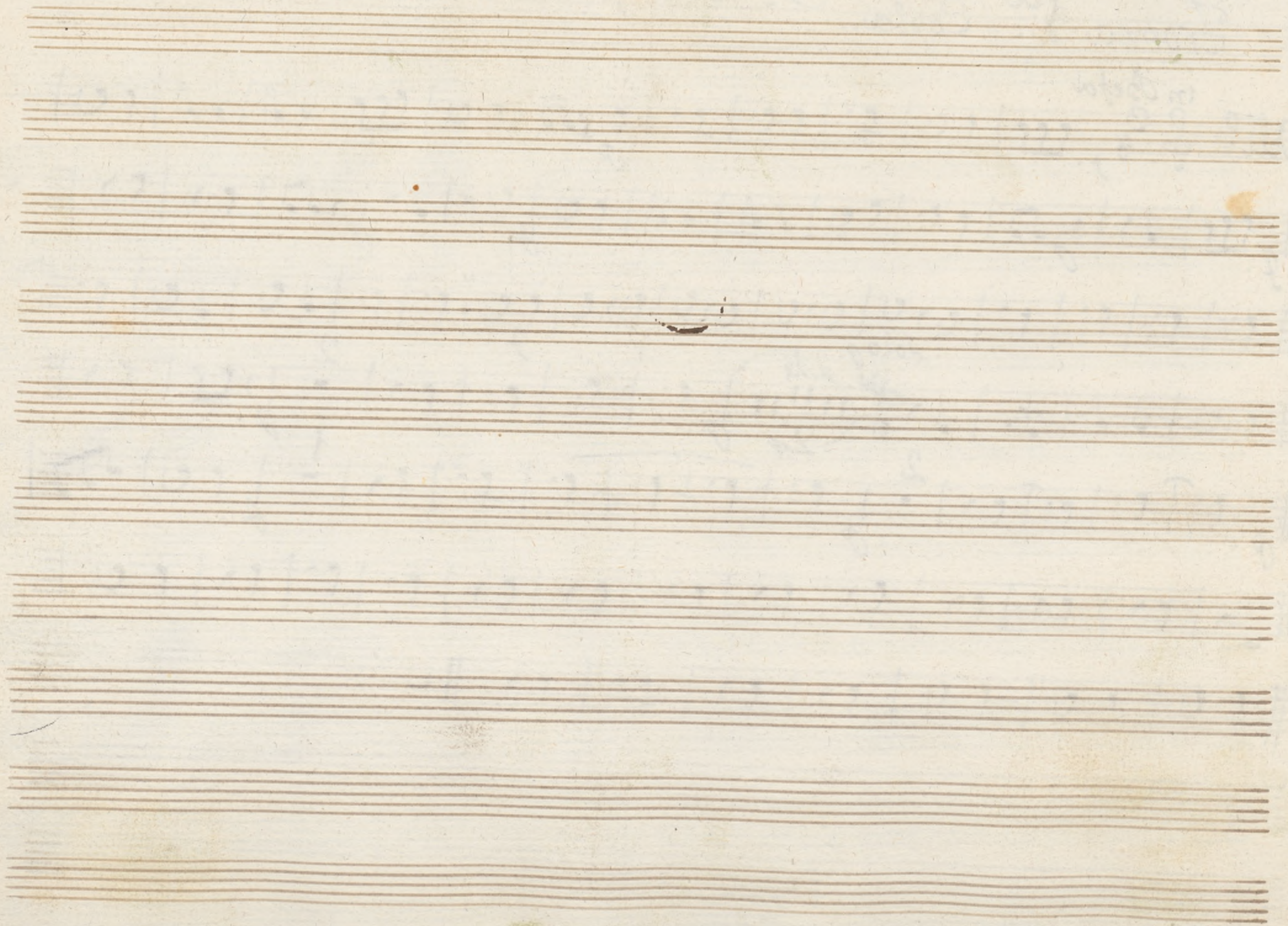
2013900021 GI

Trompa 1^{da} Copla..

Ste El Payo Noble, o Mama-uche.

All: ^{in B^{es}a} $\frac{3}{8}$





ID 1200063102

Trompa 2^a Copla... 3^{ta} el Payo Noble o el Mameauche

All.^o in B^{em}

Handwritten musical score for Trompa 2^a, Copla 3^a. The score consists of eight staves of music. The first staff begins with a treble clef, a 3/8 time signature, and a key signature of one flat (B-flat). The music is written in a cursive style with various note values, rests, and articulation marks. A 'Solo' marking appears on the third staff. A circled section on the fourth staff contains a triplet of eighth notes. The piece concludes with a double bar line on the eighth staff.

